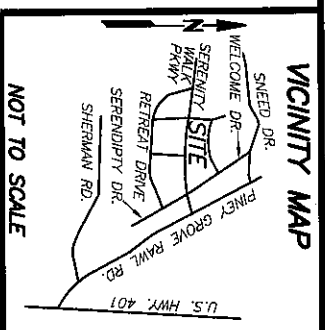


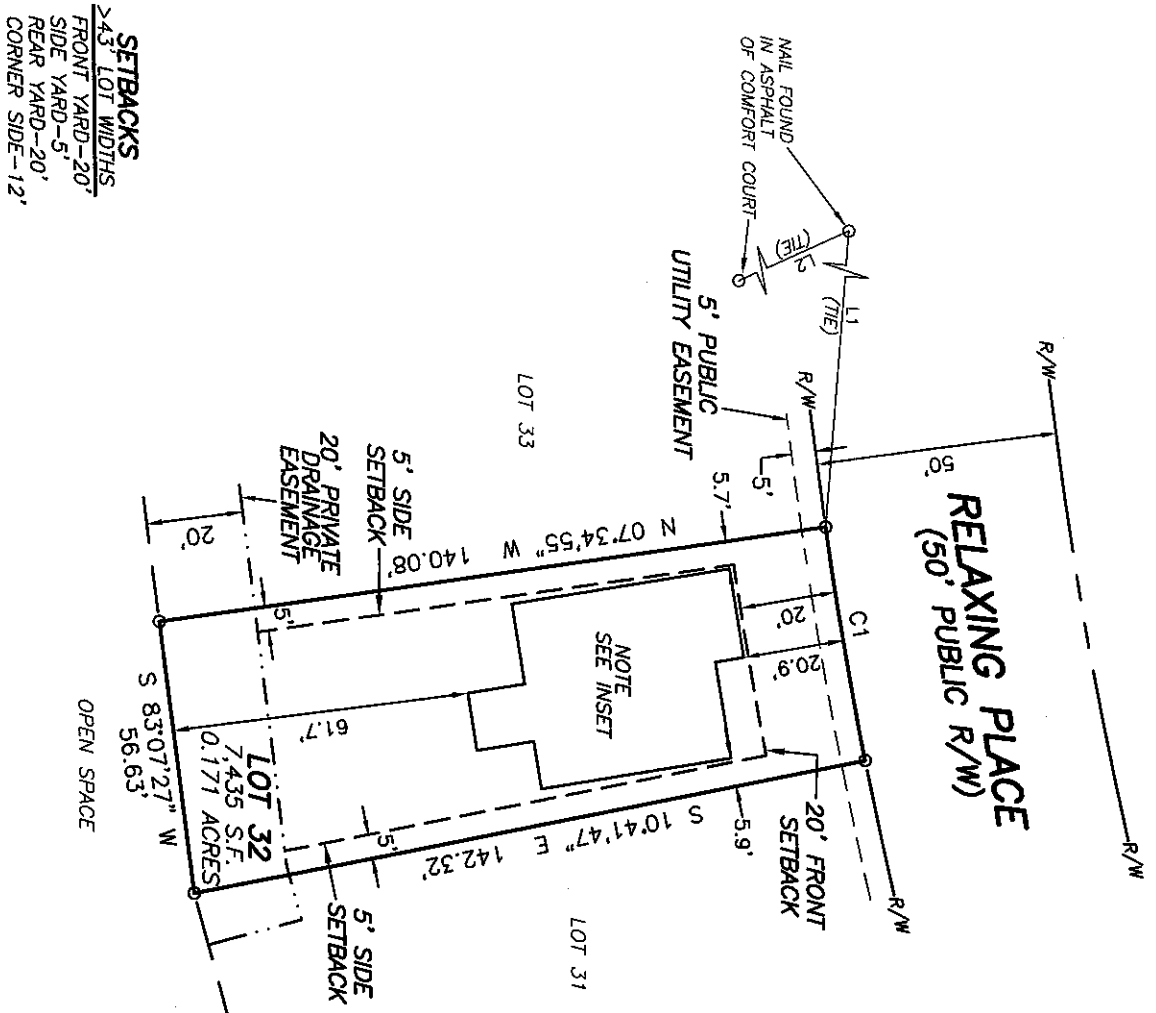
CURVE TABLE						
CURVE	DELTA	RADIUS	ARC	CHORD	TANGENT	CHORD BRG
C1	3°06'51"	900.00'	48.92'	48.91'	24.47'	N 80°51'39" E
LINE TABLE						
LINE	BEARING	DISTANCE				
L1	N 84°54'26" W	239.31'				
L2	S 23°34'04" E	110.25'				



NOT TO SCALE

- REFERENCES:
- D.B. 4165, PG. 506
P.M. 0655-23-2787 000
P.I.D. 08065501 0032 02
 - D.B. 4109, PG. 612

N.C. GRID NORTH NAD83 (2011)
P.B. 2022, PG. 419-433



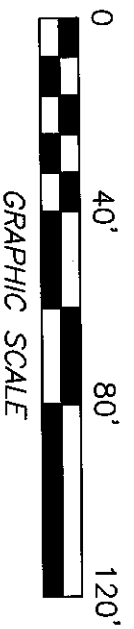
SETBACKS
 >43 LOT WIDTHS
 FRONT YARD-20'
 SIDE YARD-5'
 REAR YARD-20'
 CORNER SIDE-12'

- NOTES:
- ALL EASEMENTS, RIGHTS OF WAY AND BOUNDARY INFORMATION TAKEN FROM P.B. 2022, PG 419-433 UNLESS OTHERWISE NOTED.
 - PROPERTY IS SUBJECT TO ALL EASEMENTS AND RESTRICTIONS OF RECORD. NO TITLE EXAMINATION HAS BEEN DONE BY ROBINSON & PLANTE, P.C.

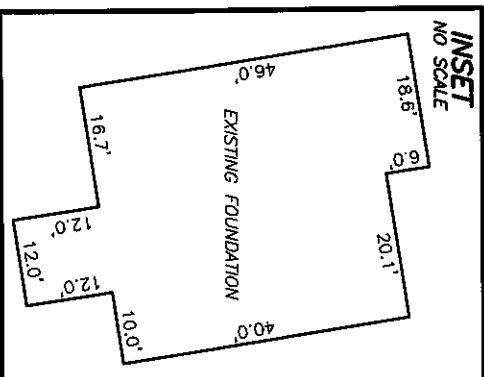
NOTE:
 RATIO OF PRECISION IS 1:10,000+, MSCLOSURE WAS DISTRIBUTED BY THE COMPASS METHOD. THE DISTANCES ON THIS MAP ARE ADJUSTED HORIZONTAL GROUND UNLESS NOTED OTHERWISE. ALL AREAS ARE CALCULATED BY COORDINATE COMPUTATION.

LOT 32 SERENITY SUBDIVISION
PHASE 1
63 RELAXING PLACE
HARNETT COUNTY
FUQUAY-VARINA, N.C. 27526

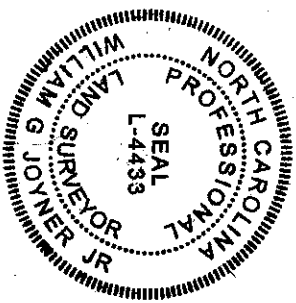
REFERENCE: PLAT BOOK 2022 PAGE 419-433.



FOUNDATION SURVEY FOR
DREES HOMES



I CERTIFY THAT THIS MAP WAS DRAWN UNDER MY SUPERVISION FROM AN ACTUAL SURVEY MADE UNDER MY SUPERVISION. DESCRIPTION RECORDED IN REFERENCES AS SHOWN. THAT THE BOUNDARIES NOT SURVEYED ARE INDICATED AS DRAWN FROM INFORMATION IN THIS MAP MEET THE REQUIREMENTS OF THE STANDARDS OF PRACTICE FOR LAND SURVEYING IN NORTH CAROLINA (21 NCAC 56.16000).
 THIS 16th DAY OF FEBRUARY 2023.
William G. Joyner Jr.
 PROFESSIONAL LAND SURVEYOR L14433



ROBINSON & PLANTE PC
 LAND SURVEYING
 C-2687
 970 TRINITY ROAD
 RALEIGH, N.C. 27607
 PHONE (919) 859-6030
 FAX (919) 859-6032

DATE: 2-14-23 SCALE: 1"=40'

FILE: SML0152FD