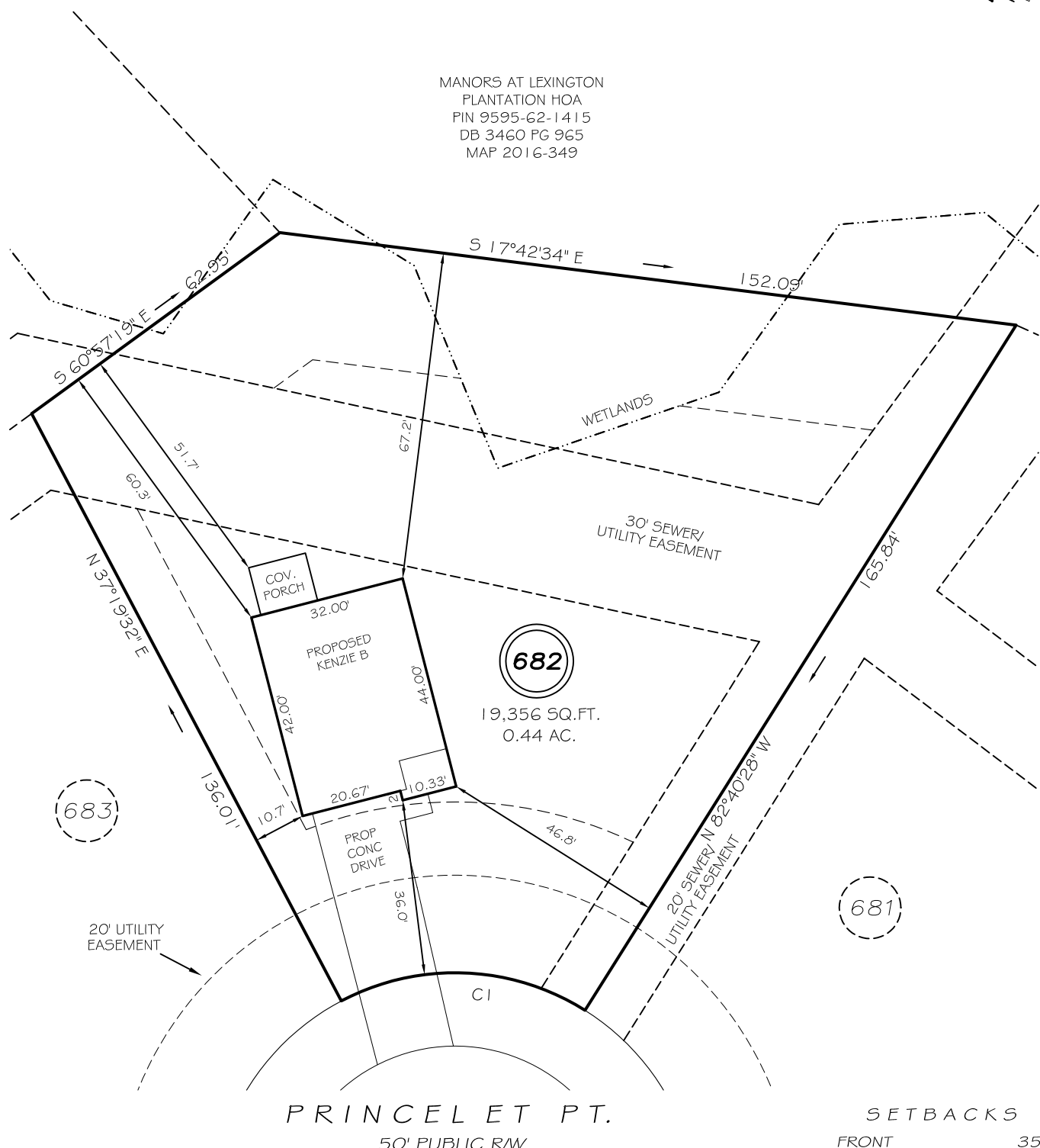


I, MICHAEL P. GRIFFIN, certify that under my direction and supervision this map was drawn from an actual field survey; that the error of closure of the survey as calculated by coordinates is 1: 10,000+; that the area shown hereon was calculated by coordinates.

Witness my hand and seal this day of MONTH 2021.

BK 2021 PG 287-288  
HARNETT CO. REGISTRY

MANORS AT LEXINGTON  
PLANTATION HOA  
PIN 9595-62-1415  
DB 3460 PG 965  
MAP 2016-349



REVISION: EDIT DIM / ADD COV PORCH 10/17/22  
REVISION: REMOVE COV. PORCH 11/12/21  
REVISION: NEW PLANS 10/28/21

**SETBACKS**

FRONT	35'
REAR	25'
SIDE (ONE SIDE)	5'
SIDE (ONE SIDE)	10'
CORNER SIDE	20'

CI R=50.00' L=52.36' N22°40'28"W 50.00'

**LEGEND**

**PRELIMINARY**  
NOT FOR RECORDATION,  
SALES OR CONVEYANCE

EIP	EXISTING IRON PIPE	FES	FLARED END SECTION
IPS	IRON PIPE SET	WM	WATER METER
RAW	RIGHT OF WAY	CO	CLEAN OUT
N/F	NOW OR FORMERLY	FH	FIRE HYDRANT
EIS	EXISTING IRON STAKE	CB	CATCH BASIN

**GLS** GRIFFIN LAND SURVEYING, INC.  
P.O. BOX 148  
FUQUAY-VARINA, NC 27526  
(919) - 567-1963

**PLOT PLAN**  
FOR  
**H & H HOMES**  
**LEXINGTON PLANTATION**  
**LOT 682**  
PRINCELET PT.  
NORTH CAROLINA  
HARNETT COUNTY ANDERSON CREEK TOWNSHIP

DRAWN BY <b>KDF</b>	DATE <b>10/19/21</b>
CHECKED BY <b>MPG</b>	SCALE <b>1" = 30'</b>