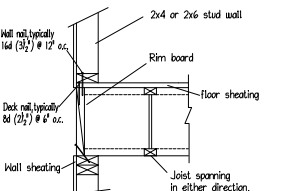
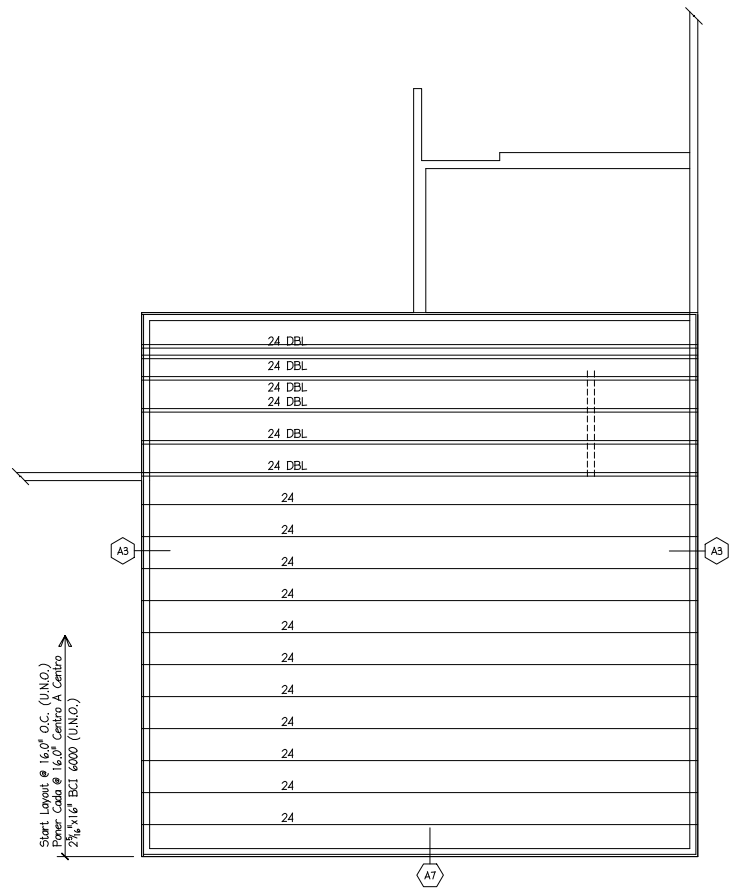


A3 Must have 1 3/4" minimum joist bearing at ends. For information on lateral load capacity refer to literature or local authority.



A7



2ND FLOOR I-JOIST PLACEMENT PLAN  
HERRING HOMES - LOT 6 GRIFFON POINTE

ENGINEERED WOOD MATERIAL LIST

HERRING HOMES  
LOT 6 GRIFFON POINTE  
2ND FLOOR I-JOIST PLACEMENT PLAN

MARK	QTY	CUT LENGTH	DESCRIPTION	(Total 552')
24	23	24'-0"	2 3/8" x 16' BCI 6000	(Total 552')
ACCESSORIES & OTHER MATERIALS (Simpson Hangers)				
ITEM	QTY	UNIT	DESCRIPTION	
16" Rim	92	LF	1"x16" Rim 8 pcs@12' or 6 pcs@16'	
BCGUIDE	1	PCS	BCI Installation Guide	
BGLAYOUT	1	PCS	BCI Placement Layout	

SEE MATERIAL LIST FOR DIMPL, SERIES 4 LENGTHS

INDICATED I-JOIST  
INDICATED TRIMMER/END JOIST, L.S.  
INDICATED PARALLEL P.C.  
INDICATED B.C.I. LAYOUT

INDICATES A SECTION FROM THE  
INSTALLATION GUIDE DETAIL IS  
ALSO SHOWN ON THIS SHEET

LOAD BEARING WALL ABOVE = ||| = |||  
BEAM BY CHAINS  
EXTRA JOIST ABOVE  
EXTRA JOIST (1) UNDER WALL  
DOUBLE JOIST (2)  
TRIMMER JOIST (3)  
I-JOIST END JOIST PANEL  
1 JOIST OR 1 JOIST WITH BOARD  
CONCENTRATED POINT LOAD FROM ABOVE  
DEPT. REPORT  
FLUSH BAY

THIS SHOP DRAWING IS BASED ON THE FOLLOWING

PROJECT LOCATION :  
PROJECT NUMBER :  
ARCHITECT DNGS BY :  
ARCHITECT REVISION :  
CHECKED BY :  
STRUCTURAL REVIEW BY :  
DATE :  
DATE :

REV	BY	DATE / DESC.
SD	ET	9/7/22

DESIGN DATA	
LIVE	40 PSF
DEAD	10 PSF
TOTAL LOAD	= 50 PSF
STRESS DURATION	= 100%
DEFLECTION CRITERIA	= (L/480)

**Builder's FirstSource**

DISCLAIMER: THIS DOCUMENT IS THE PROPERTY OF BUILDER'S FIRSTSOURCE, INC. AND IS NOT TO BE REPRODUCED, COPIED, OR TRANSMITTED IN ANY FORM OR BY ANY MEANS, ELECTRONIC OR MECHANICAL, INCLUDING PHOTOCOPYING, RECORDING, OR BY ANY INFORMATION STORAGE AND RETRIEVAL SYSTEM. ANY UNAUTHORIZED USE OF THIS DOCUMENT IS STRICTLY PROHIBITED. BUILDER'S FIRSTSOURCE, INC. ACCEPTS NO LIABILITY FOR ANY ERRORS OR OMISSIONS IN THIS DOCUMENT. THE USER ASSUMES ALL LIABILITY FOR ANY DAMAGE, LOSS, OR INJURY RESULTING FROM THE USE OF THIS DOCUMENT. CONTACT: 1-800-854-3434

I-Joists

12BCI4500	= 12TJI110
12BCI5000	= 12TJI210
14BCI4500	= 14TJI110
14BCI5000	= 14TJI210
14BCI6000	= 14TJI230
16BCI5000	= 16TJI210
16BCI6000	= 16TJI360

POINT LOAD FROM ABOVE (P.L.F.A.)

USE SOLID BLOCKING TO TRANSFER LOAD FROM ABOVE TO FOUNDATION



BUILDER: HERRING HOMES  
MODEL: LOT 6 GRIFFON POINTE  
2ND FLOOR I-JOIST PLACEMENT PLAN  
DATE: MONDAY, 10 OCTOBER 2022 - 12:46 AM  
FILE: I:\...G - JORDAN HONESVILLE - LOT 6 GRIFFON POINTE.DWG