

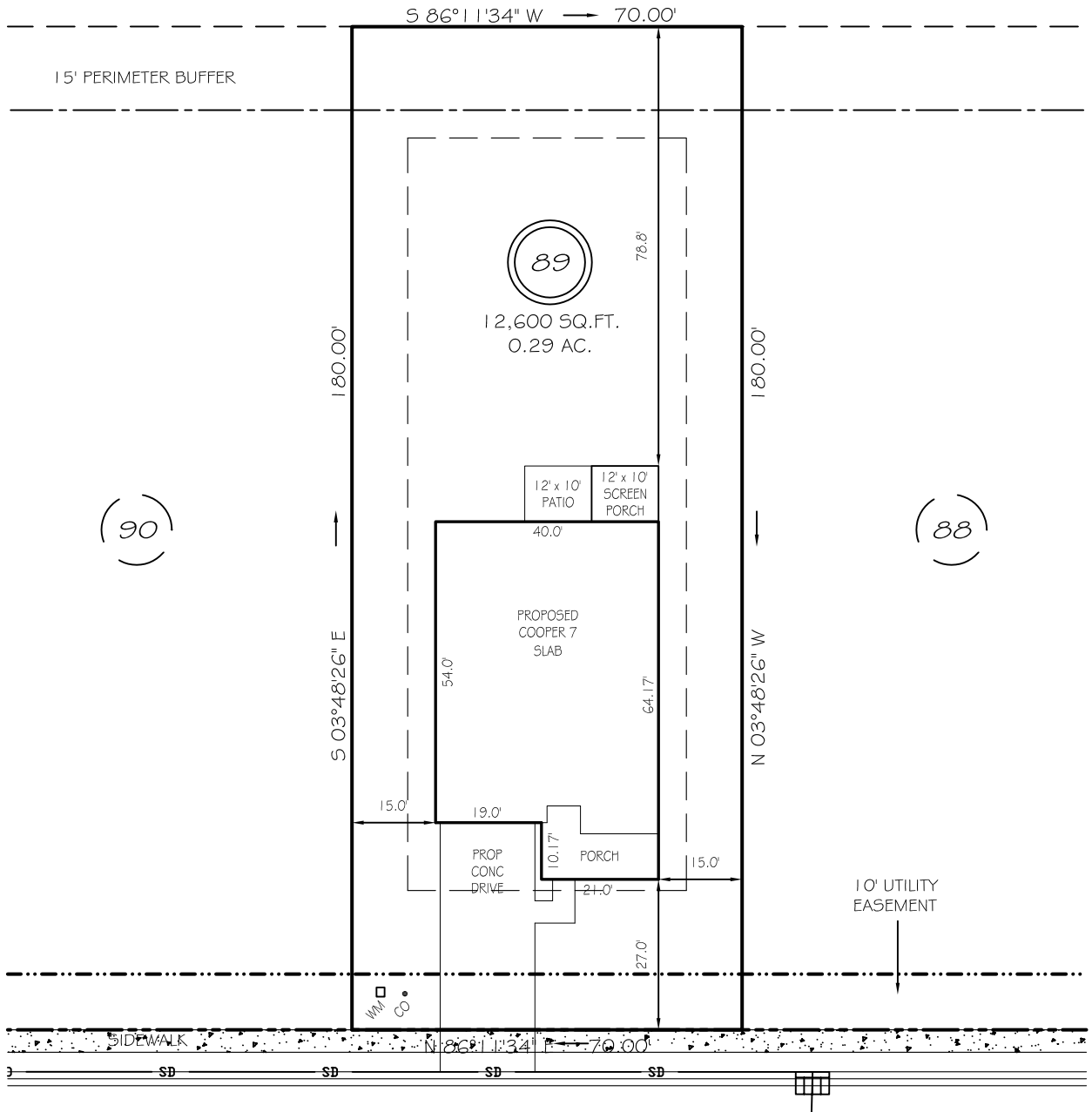
I, MICHAEL P. GRIFFIN, certify that under my direction and supervision this map was drawn from an actual field survey; that the error of closure of the survey as calculated by coordinates is 1: 10,000+; that the area shown hereon was calculated by coordinates.

Witness my hand and seal this day of MONTH 2022.

BK 2022 FGS 203-205
HARNETT CO. REGISTRY



N/F
TRAVIS SCOTT WESTER
ESTATE 92E, PG 105



WINDING CREEK DRIVE

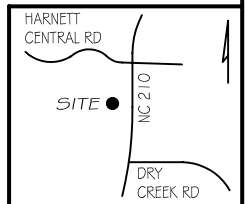
50' PUBLIC RW & UTILITY EASEMENT

SETBACKS

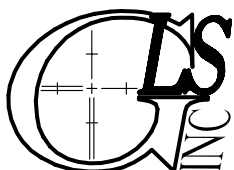
FRONT	25'
REAR	20'
SIDE	10'
CORNER SIDE	20'

LEGEND

EIP	EXISTING IRON PIPE	FES	FLARED END SECTION
IPS	IRON PIPE SET	WM	WATER METER
R/W	RIGHT OF WAY	CO	CLEAN OUT
N/F	NOW OR FORMERLY	FH	FIRE HYDRANT
EIS	EXISTING IRON STAKE	CB	CATCH BASIN



P R E L I M I N A R Y
NOT FOR RECORDATION,
SALES OR CONVEYANCE



GRIFFIN LAND SURVEYING, INC.

P. O. BOX 148
FUQUAY-VARINA, NC 27526
(919) - 567 - 1963

PLOT PLAN
FOR
DRB HOMES
THE FARM AT
NEILLS CREEK
LOT 89

57 WINDING CREEK DRIVE
NORTH CAROLINA
HARNETT COUNTY NEILL'S CREEK TWSHP

DRAWN BY KDF	DATE 9/27/22
CHECKED BY MPG	SCALE 1" = 30'