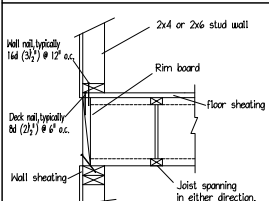
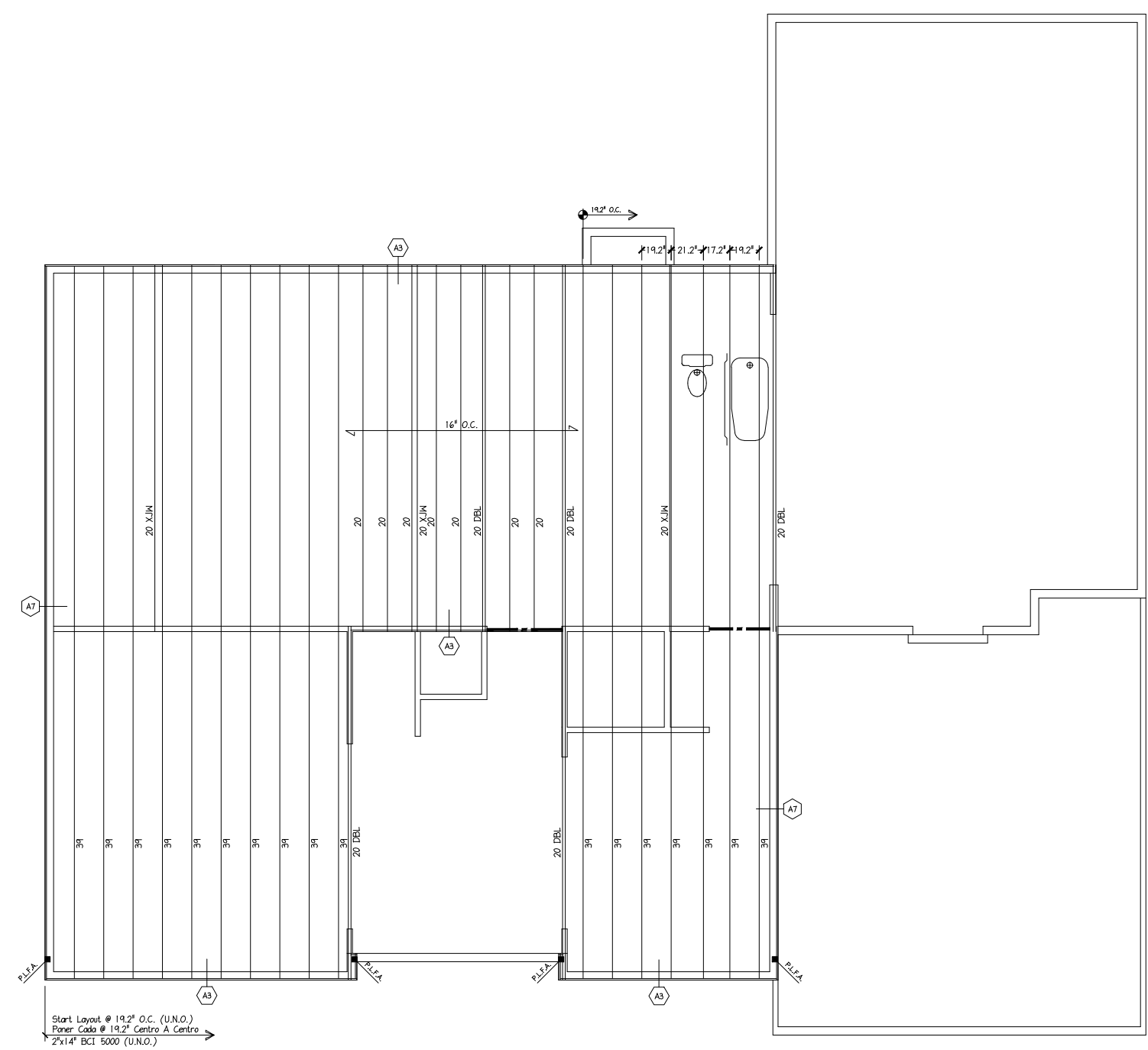


A3 Must have 1 3/4" minimum joist bearing at ends. For information on lateral load capacity refer to literature or load schedule.



A7



Start Layout @ 19.2' O.C. (U.N.O.)  
Paper Cuts @ 19.2' Centro A Centro  
2"x14" BCI 5000 (U.N.O.)

2ND FLOOR I-JOIST PLACEMENT PLAN  
CARUSO HOMES - LOT 79 NC 1 - LEXINGTON II

ENGINEERED WOOD MATERIAL LIST			
CARUSO HOMES LOT 79 NC 1 - LEXINGTON II 2ND FLOOR I-JOIST PLACEMENT PLAN			
MARK	QTY	CUT LENGTH	DESCRIPTION
20	20	20'-0"	2" x 14" BCI 5000
39	17	39'-0"	2" x 14" BCI 5000 [Total 1063']
ACCESSORIES & OTHER MATERIALS (Simpson Hangers)			
ITEM	QTY	UNIT	DESCRIPTION
14" Rim	142	LF	1"x14" Rim 12 pcs@12' or 9 pcs@16'
ECLAYOUT	1	PCS	BCI Placement Layout
BCGUIDE	1	PCS	BCI Installation Guide

SEE MATERIAL LIST FOR DEPTH, SERIES & LENGTH  
INDICATED I-JOIST  
INDICATED TIMBERSTRAND WFL, LVL  
INDICATED FLOOR-JOIST, LVL  
INDICATED PARALLEL PCL  
INDICATED GUESS-LAY  
INDICATES A SECTION FROM THE INSTALLATION GUIDE IS TO BE USED IS ALSO SHOWN ON THIS SHEET  
LOAD BEARING WALL ABOVE = |||||  
BEAM BY CHAINS  
EXTRA JOIST ADDED  
EXTRA JOIST (1) UNDER WALL  
DOUBLE JOIST (2)  
TYPICAL JOIST (3)  
1-2" JOIST BRIDGE PANEL  
1-1/2" OR 1-1/4" JOIST ROADS  
CONCENTRATED LOAD FROM ABOVE  
DEEP BEAM  
FLUSH BEAM

THIS SHOP DRAWING IS BASED ON THE FOLLOWING

PROJECT LOCATION :	
PROJECT NUMBER :	
ARCHITECT DNGS BY :	ARCH DNGS DATE :
ARCH LATEST REVISION :	
CHECKED BY :	DATE :
STRUCTURAL REVIEW BY :	

REV	BY	DATE / DESC.
SD	SLH	9/6/22

DESIGN DATA

LIVE	40 PSF
DEAD	10 PSF
TOTAL LOAD	= 50 PSF
STRESS DURATION	= 100%
DEFLECTION CRITERIA	= (L/480)

**Builders FirstSource**

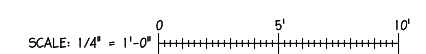
© 2022 BUILDERS FIRSTSOURCE, INC. ALL RIGHTS RESERVED. THIS DOCUMENT IS THE PROPERTY OF BUILDERS FIRSTSOURCE, INC. AND IS NOT TO BE REPRODUCED OR TRANSMITTED IN ANY FORM OR BY ANY MEANS, ELECTRONIC OR MECHANICAL, INCLUDING PHOTOCOPYING, RECORDING, OR BY ANY INFORMATION STORAGE AND RETRIEVAL SYSTEM. THE QUANTITIES AND CONDITIONS ARE MANUFACTURER'S INSTALLATION GUIDE FOR WFL. QUANTITIES ARE TO BE USED AS A GUIDE ONLY. THE QUANTITIES ARE TO BE USED AS A GUIDE ONLY. THE QUANTITIES ARE TO BE USED AS A GUIDE ONLY. THE QUANTITIES ARE TO BE USED AS A GUIDE ONLY.

**I-Joists**

12BCI4500	=	12TJ1110
12BCI5000	=	12TJ1210
14BCI4500	=	14TJ1110
14BCI5000	=	14TJ1210
14BCI6000	=	14TJ1230
16BCI5000	=	16TJ1210
16BCI60	=	16TJ1360

**POINT LOAD FROM ABOVE (P.L.F.A.)**

USE SOLID BLOCKING TO TRANSFER LOAD FROM ABOVE TO FOUNDATION



**CARUSO HOMES**

PROJECT: LOT 79 NC 1 - LEXINGTON II

2ND FLOOR I-JOIST PLACEMENT PLAN

DATE: THURSDAY, 29 SEPTEMBER 2022 - 7:10 AM

FILE: I:\...ACADDWG\CARUSO HOMES\LEXINGTON II - LOT 79 NC 1.DWG

DRAWN BY: NJH DATE: 2/1/22

SHEET: 2 OF 2 SHEETS