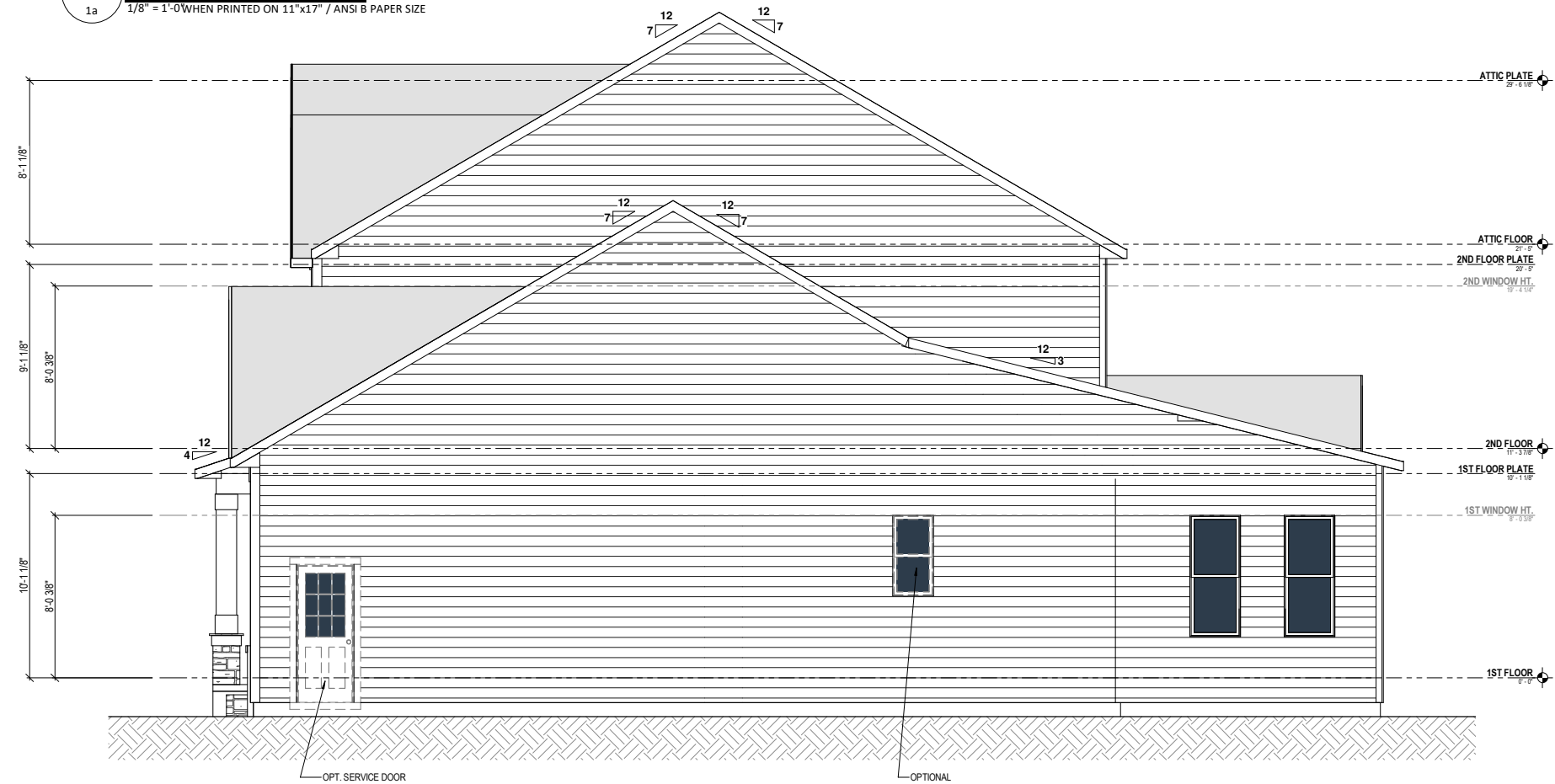


MEAN ROOF HGT = 29'-0"

**ENERGY COMPLIANCE MINIMUMS**  
 MAX GLAZING U-FACTOR = 0.35  
 WALL R-VALUE = 15  
 CEILING R-VALUE = 38  
 FLOOR R-VALUE = 19

**1 FRONT ELEVATION**  
 1/8" = 1'-0" WHEN PRINTED ON 11"x17" / ANSI B PAPER SIZE



**2 RIGHT ELEVATION**  
 1/8" = 1'-0" WHEN PRINTED ON 11"x17" / ANSI B PAPER SIZE

Heated SQFT Elev. 1	
Description	Area
1st Floor Livable	2216 SF
2nd Floor Livable	1344 SF
<b>Grand total</b>	<b>3560 SF</b>

Unheated SQFT Elev. 1	
Description	Area
Front Porch	127 SF
Garage	453 SF
Screened Porch	188 SF
Deck	163 SF

Lexington II - NC1 79

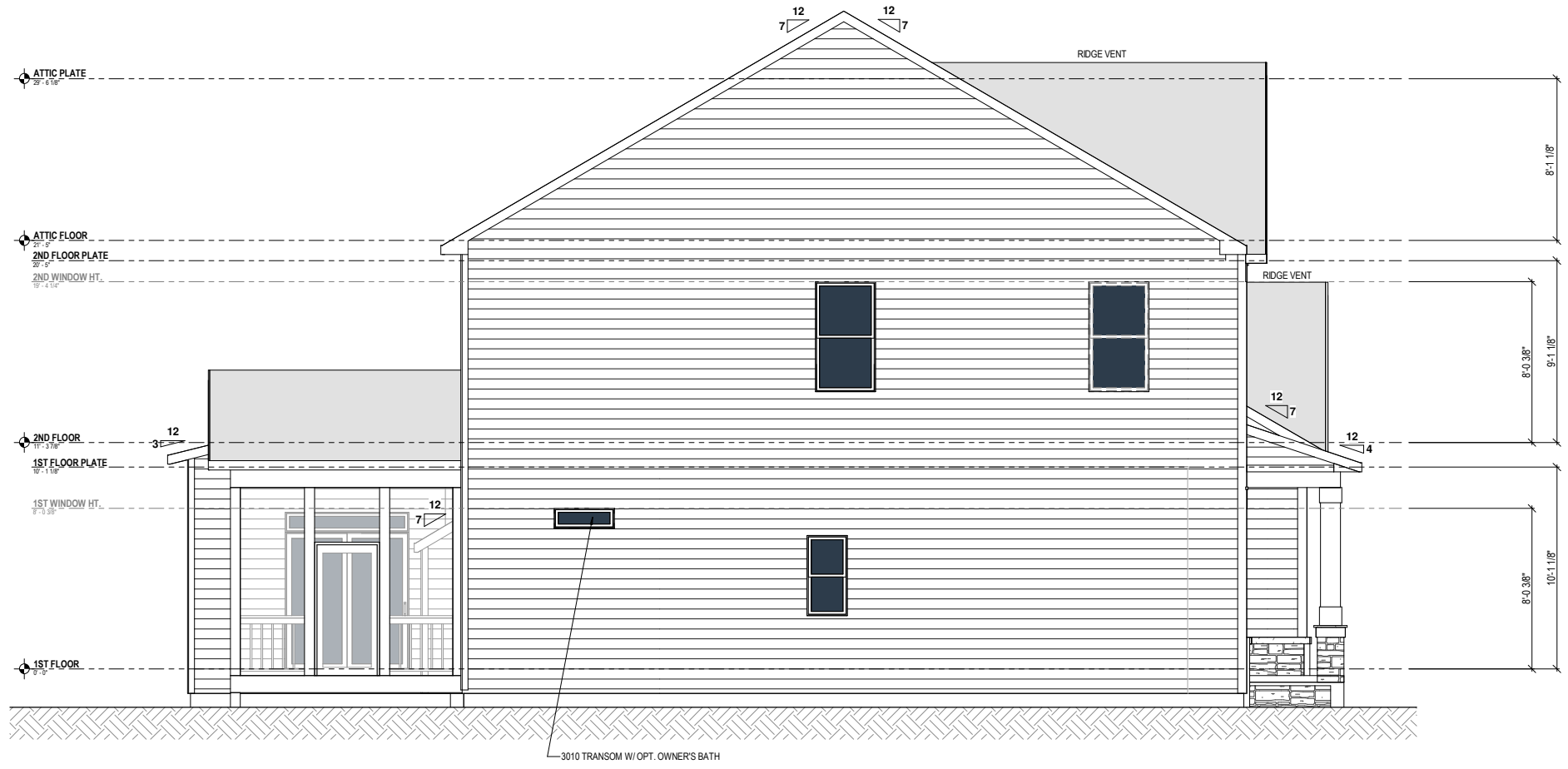
Caruso Homes

Front and Left Elevation 1

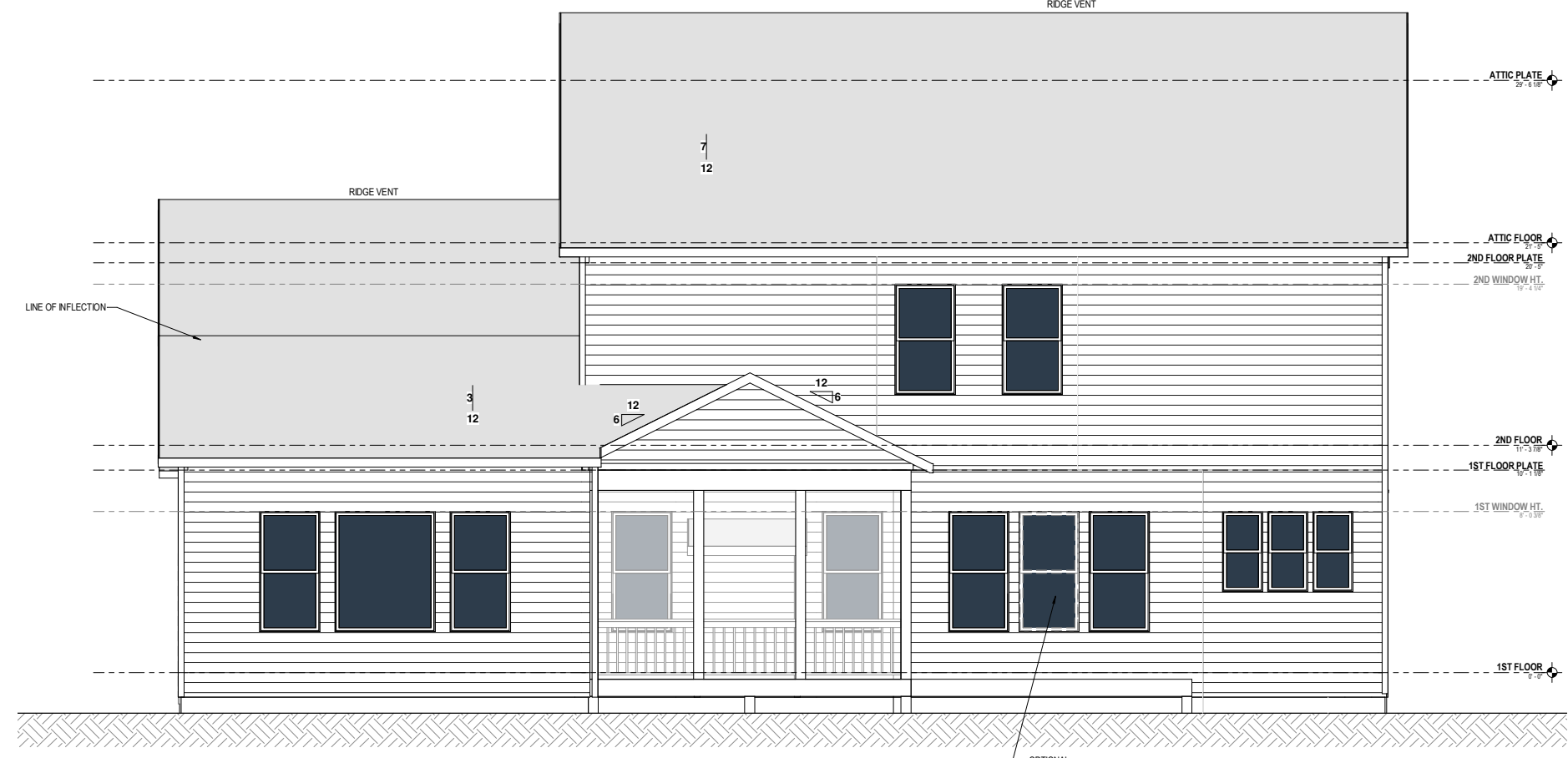
Date: 2/29/22

Drawn By: RDC

Checked By: SGM



**3 LEFT ELEVATION**  
2a 1/8" = 1'-0" WHEN PRINTED ON 11"x17" / ANSI B PAPER SIZE



**1 REAR ELEVATION**  
2a 1/8" = 1'-0" WHEN PRINTED ON 11"x17" / ANSI B PAPER SIZE

Lexington II - NC1 79

Caruso Homes

Right and Rear Elevations

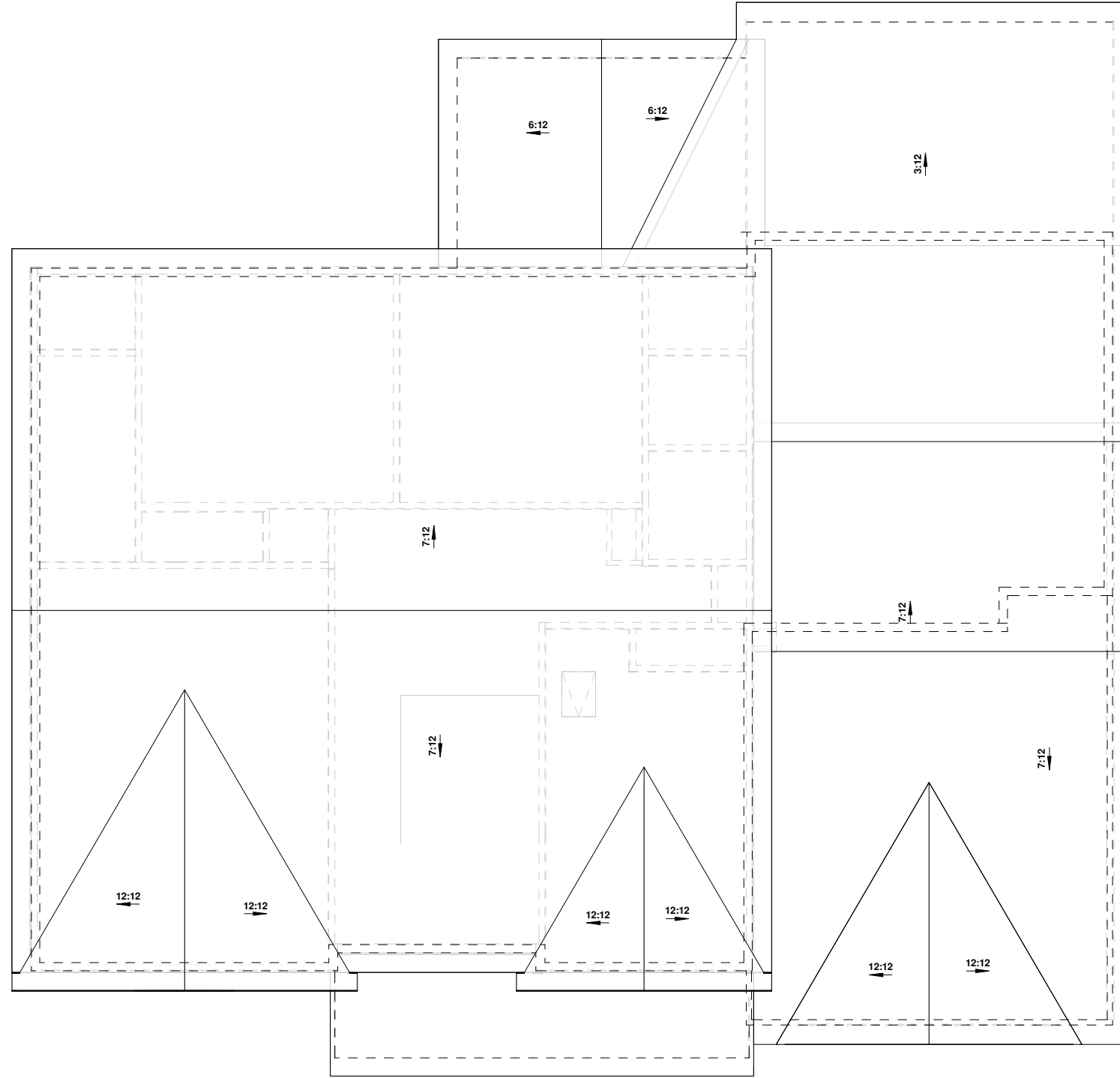
Date: 2/29/22

Drawn By: RDC

Checked By: SGM

# Roof Vent Calculations

SQFT. REQUIRED  $2,560 / 150 = 17.07$  SQFT.



**1** Roof Plan  
3a 1/8" = 1'-0" WHEN PRINTED ON 11"x17" / ANSI B PAPER SIZE



Lexington II - NC1 79

Caruso Homes

Roof Plan Elevation 1

Date: 2/29/22

Drawn By: RDC

Checked By: SGM

3a

# Crawl Vent Calculations

SQFT. OF VENTILATION REQ'D = 2216 CRAWL SQFT. /1500 = 1.48 SQFT.

NUMBER OF VENTS REQ'D = 1.48 /0.45 SQFT. PER VENT = 4 VENTS

VENT SHALL BE PLACED WITHIN AT LEAST 3'-0" FROM EACH FOUNDATION CORNER.

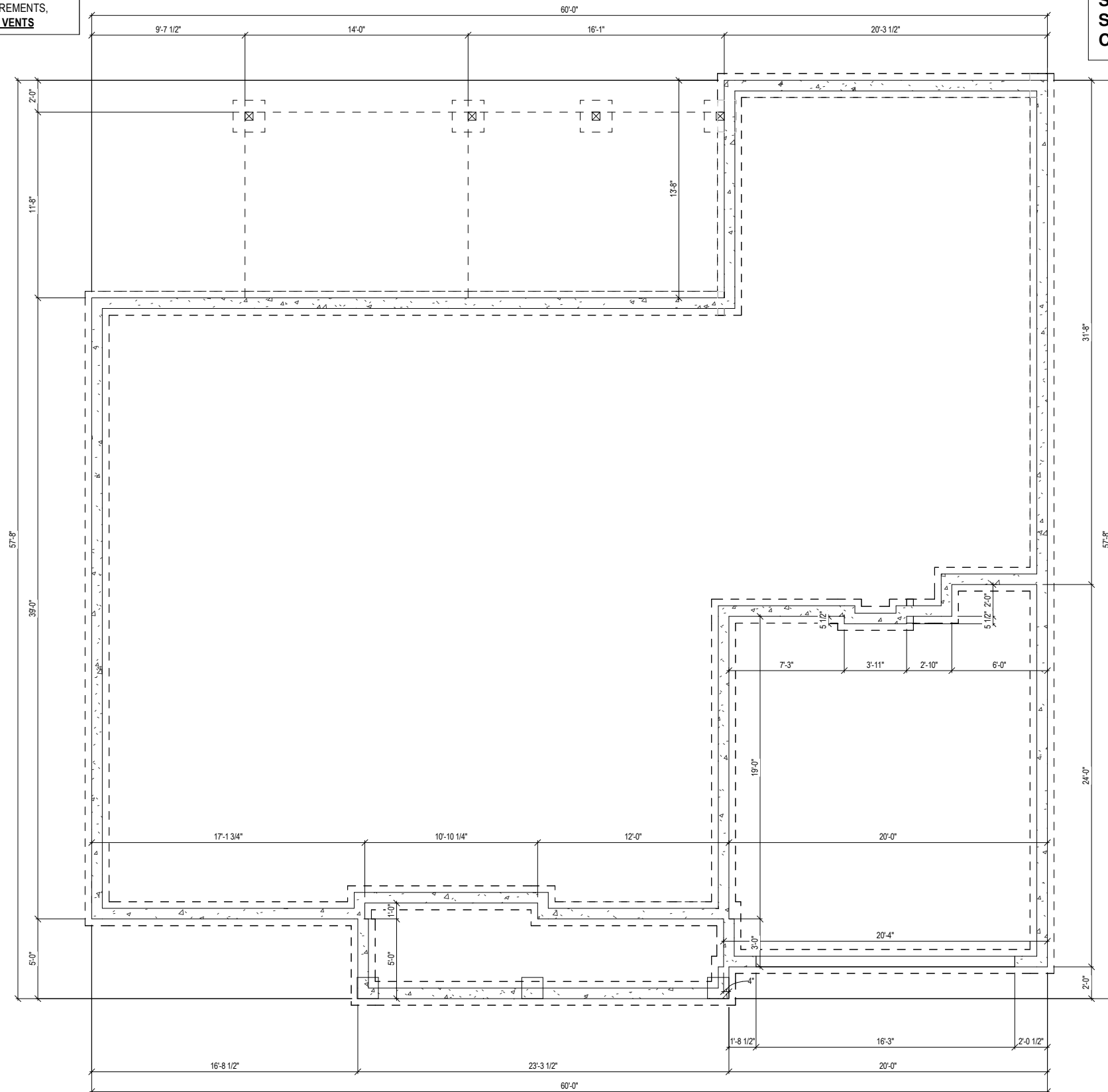
# OF CORNERS EFFECTED = 7

NUMBER OF CORNERS IS GREATER THAN SQUARE FOOTAGE REQUIREMENTS, THEREFORE THE NUMBER OF FOUNDATION VENTS REQUIRED IS = 7 VENTS

BASED ON TYPICAL AUTOMATIC FOUNDATION VENT HAVING 65 SQ. INCHES OF VENTING. CONTRACTOR TO CONFIRM ACTUAL VENTS USED AND ADJUST AS NEEDED IN FIELD.

**NOTE: THIS SHEET IS AN ARCHITECTURAL FOUNDATION SHEET INTENDED ONLY FOR EXTERIOR DIMENSIONS AND/OR VENTILATION REQUIREMENTS/SPECIFICATIONS.**

**SEE SEALED STRUCTURAL PAGE FOR INFORMATION REGARDING, BUT NOT LIMITED TO, FOOTING LOCATIONS AND SPECIFICATIONS, PIER LOCATIONS AND SPECIFICATIONS, DECK FRAMING, AND COMPACTION**



NOTE: PLANSOURCE DESIGNS IS NOT RESPONSIBLE FOR THE STRUCTURAL CALCULATIONS FOR THIS CONSTRUCTION PLAN SET. ALL STRUCTURAL DESIGN ELEMENTS, INCLUDING BUT NOT LIMITED TO, BEAM SIZES, FLOOR SPANS, STUD COLUMNS AND FOOTING SIZES, ARE TO BE VERIFIED BY THE BUILDER AND/OR ENGINEER

**1** Crawl Foundation  
4a 1/8" = 1'-0" WHEN PRINTED ON 11"x17" / ANSI B PAPER SIZE



Lexington II - NC1 79

Caruso Homes

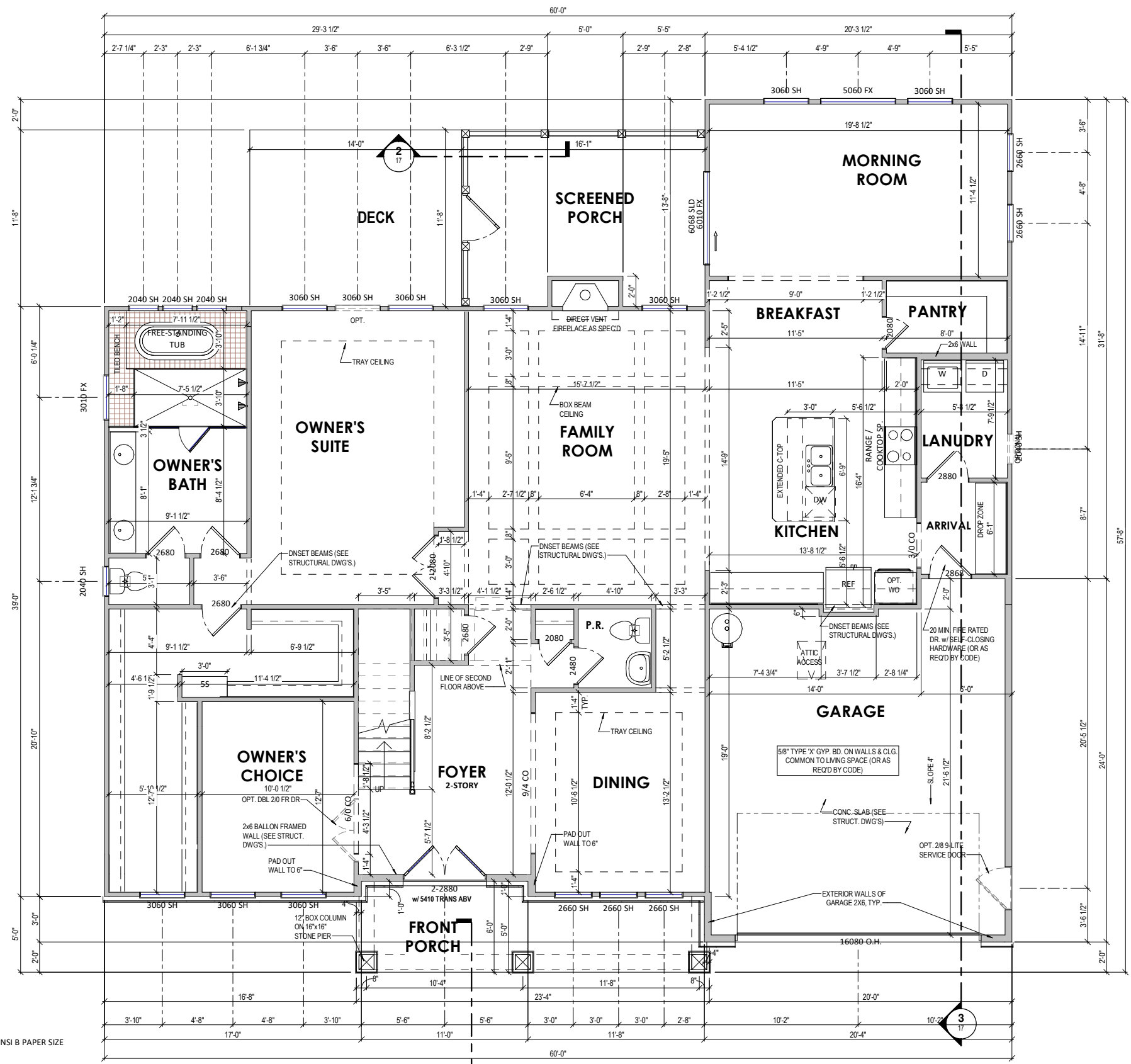
Crawl Foundation

Date: 2/29/22

Drawn By: sgm

Checked By: sgm

4a



**1** 1st Floor Plan  
 5a 1/8" = 1'-0" WHEN PRINTED ON 11"x17" / ANSI B PAPER SIZE

Lexington II - NC1 79

Caruso Homes

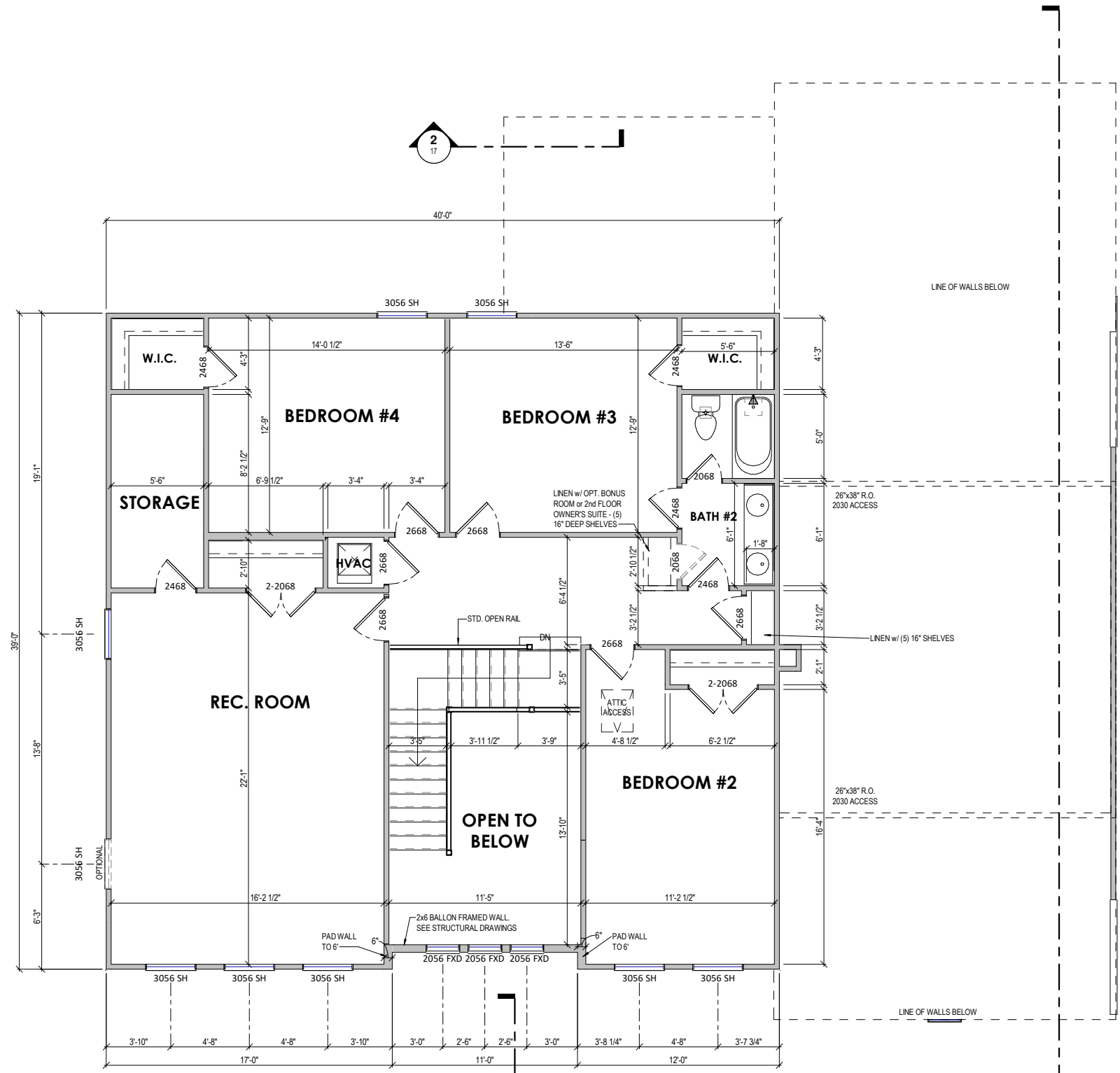
First Floor Plan Elevation 1

Date: 2/29/22

Drawn By: RDC

Checked By: SGM

5a



**1 2nd Floor Plan**  
6a  
1/8" = 1'-0" WHEN PRINTED ON 11" x 17" / ANSI B PAPER SIZE

Lexington II - NC1 79

Caruso Homes

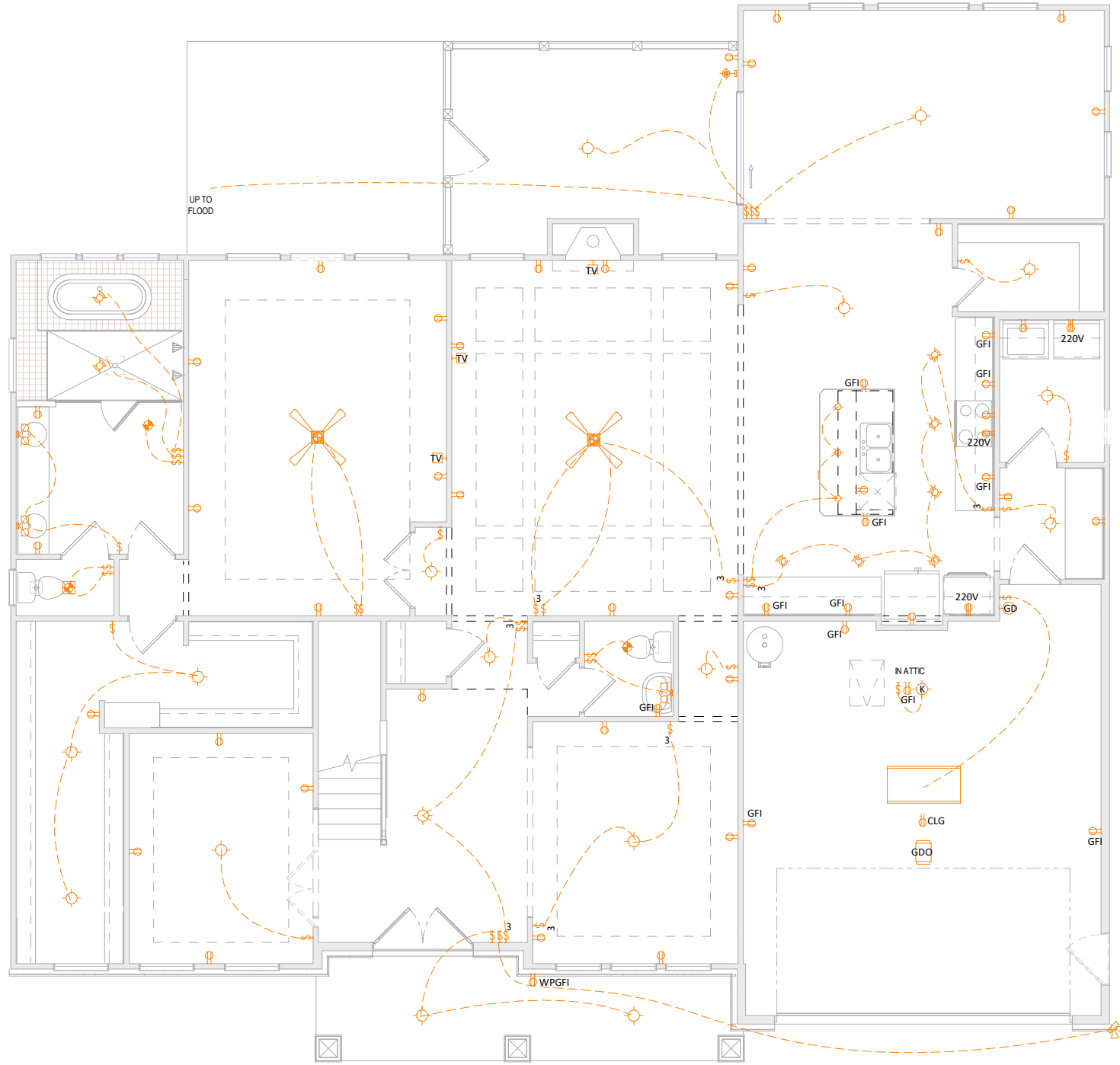
Second Floor Plan

Date: 2/29/22

Drawn By: RDC

Checked By: SGM

ELECTRICAL LEGEND			
	SINGLE POLE SWITCH		DOOR BELL BUTTON
	3-WAY SWITCH		DOOR BELL CHIME
	4-WAY SWITCH		GARAGE DOOR
	DIMMER SWITCH		BUTTON GARAGE DOOR
	220 VOLT OUTLET		WEATHERPROOF OUTLET
	DUPLEX OUTLET		CEILING OUTLET
	GROUND FAULT OUTLET		FLOOR OUTLET
	SMOKE DETECTOR		CARBON MONOXIDE & SMOKE DETECTOR
	CARBON MONOXIDE DETECTOR		NETWORK OUTLET
	TELEVISION OUTLET		TELEPHONE OUTLET
	SERVICE PANEL		GARBAGE DISPOSAL
	SERVICE METER		ACCENT LIGHT
	WALL MOUNT LIGHT		SINGLE SCONCE
	FLOOD LIGHT		DOUBLE SCONCE
	STRIP LIGHT		STAIR LIGHT
	BATH FAN & LIGHT		BATH FAN
	COMBO CLOSET CASTER LIGHT		UNDER CABINET LIGHT
	PULL CHAIN LIGHT		KEYLESS LIGHT
	FLUSH MOUNT LIGHT		HANGING LIGHT
	HANGING PENDANT LIGHT		MINIATURE PUCK LIGHT
	RECESSED CAN LIGHT		RECESSED EYEBALL LIGHT
	FLUORESCENT LIGHT RECTANGULAR		FLUORESCENT LIGHT ROUND
	CEILING FAN		LIGHT w/ FAN ROUGH
	LIGHTED CEILING FAN		LIGHT & FAN ROUGH



**1 1st Floor Plan Electrical**  
 15 1/8" = 1'-0" WHEN PRINTED ON 11"x17" / ANSI B PAPER SIZE



Lexington II - NC1 79

Caruso Homes

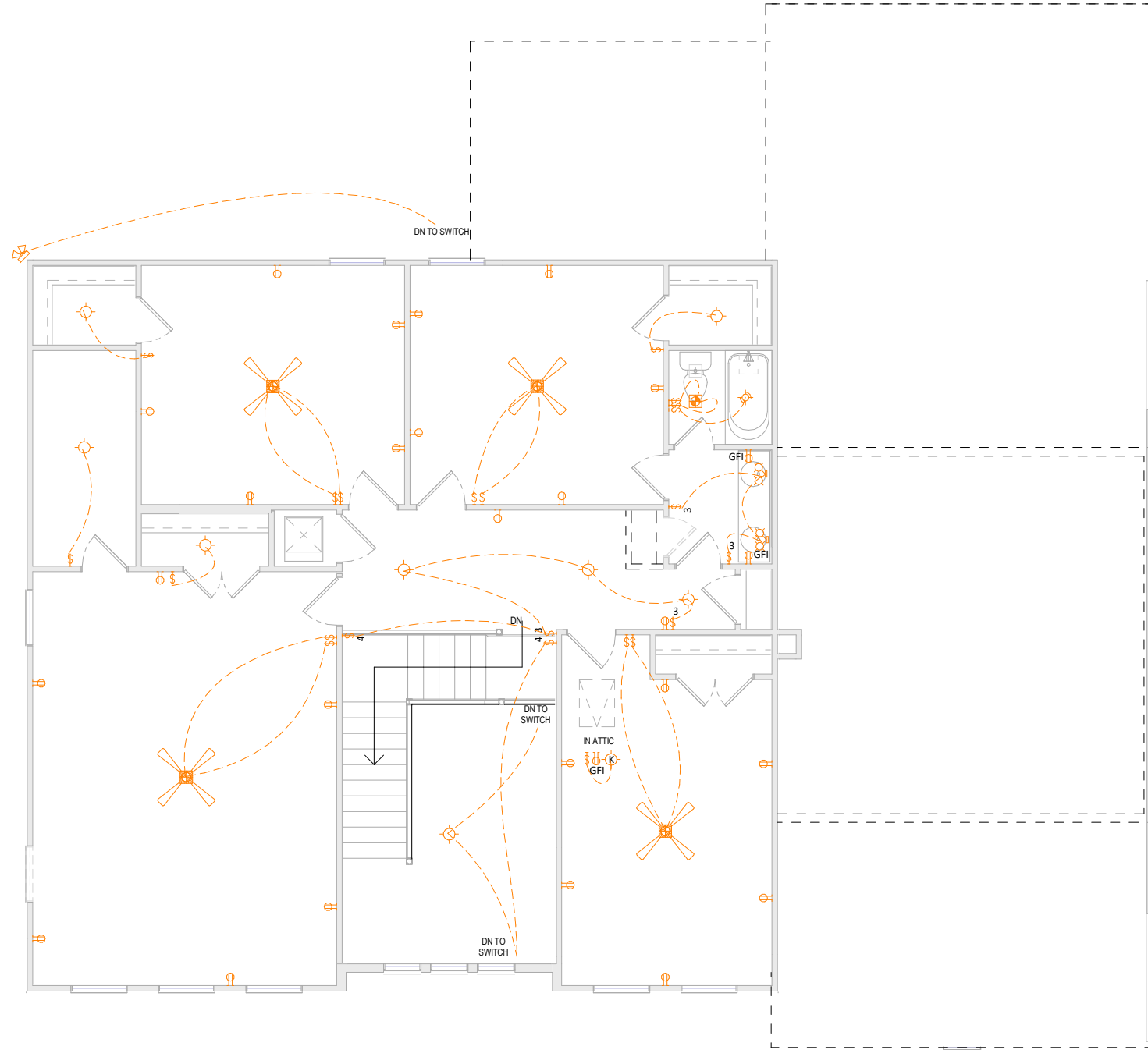
First Floor Electrical

Date: 2/29/22

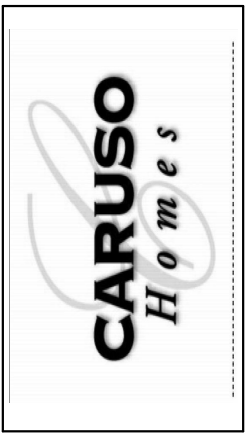
Drawn By: RDC

Checked By: SGM

ELECTRICAL LEGEND			
	SINGLE POLE SWITCH		DOOR BELL BUTTON
	3-WAY SWITCH		DOOR BELL CHIME
	4-WAY SWITCH		GARAGE DOOR BUTTON
	DIMMER SWITCH		GARAGE DOOR OPENER WEATHERPROOF OUTLET
	220 VOLT OUTLET		CEILING OUTLET
	DUPLEX OUTLET		FLOOR OUTLET
	GROUND FAULT OUTLET		CARBON MONOXIDE & SMOKE DETECTOR
	SMOKE DETECTOR		CARBON MONOXIDE DETECTOR
	CARBON MONOXIDE DETECTOR		DATA NETWORK OUTLET
	TELEVISION OUTLET		TELEPHONE OUTLET
	SERVICE PANEL		GARBAGE DISPOSAL
	SERVICE METER		ACCENT LIGHT
	WALL MOUNT LIGHT		SINGLE SCONCE
	FLOOD LIGHT		DOUBLE SCONCE
	STRIP LIGHT 3 BULB		STAIR LIGHT
	BATH FAN & LIGHT		BATH FAN
	COMBO CLOSET CASTER LIGHT		UNDER CABINET LIGHT
	PULL CHAIN LIGHT		KEYLESS LIGHT
	FLUSH MOUNT LIGHT		HANGING LIGHT
	HANGING PENDANT LIGHT		MINIATURE PUCK LIGHT
	RECESSED CAN LIGHT		RECESSED EYEBALL LIGHT
	FLUORESCENT LIGHT RECTANGULAR		FLUORESCENT LIGHT ROUND
	CEILING FAN		LIGHT w/ FAN ROUGH
	LIGHTED CEILING FAN		LIGHT & FAN ROUGH



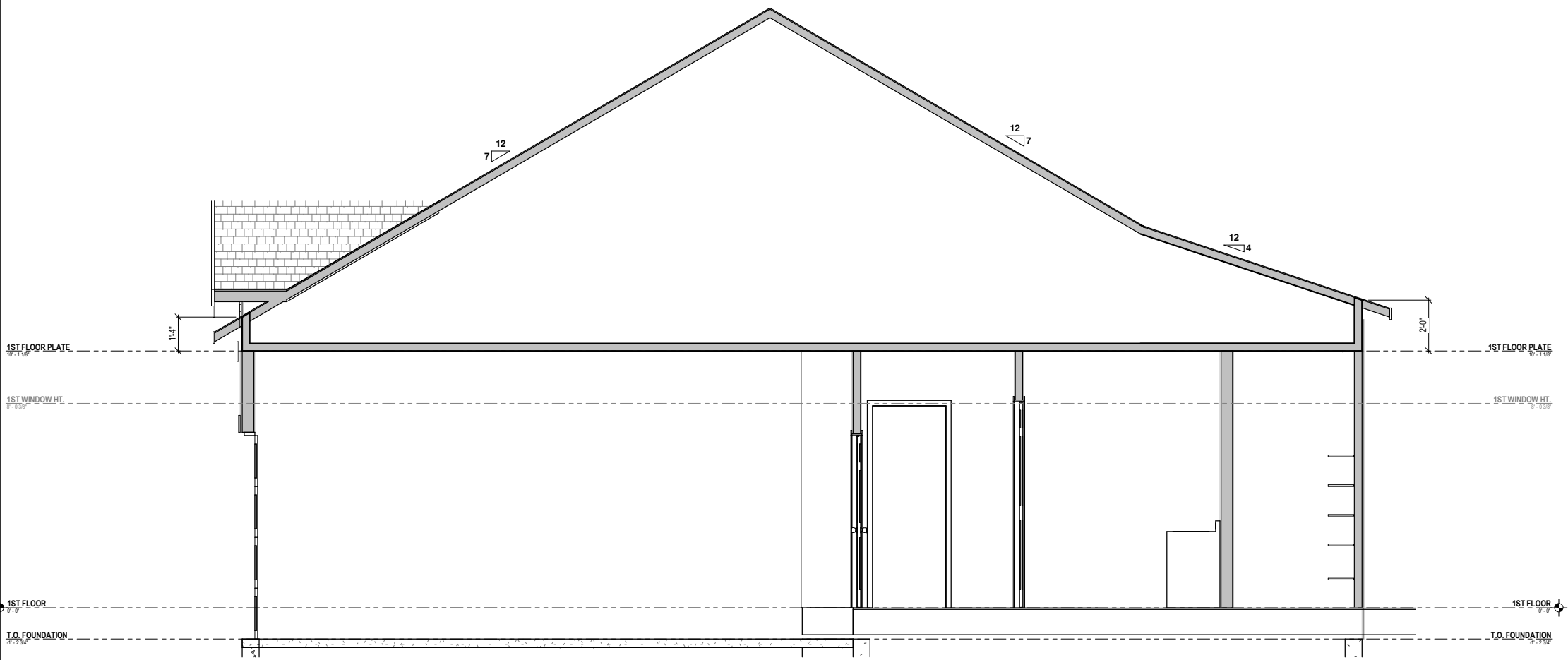
**1 2nd Floor Plan Electrical**  
 1/8" = 1'-0" WHEN PRINTED ON 11"x17" / ANSI B PAPER SIZE



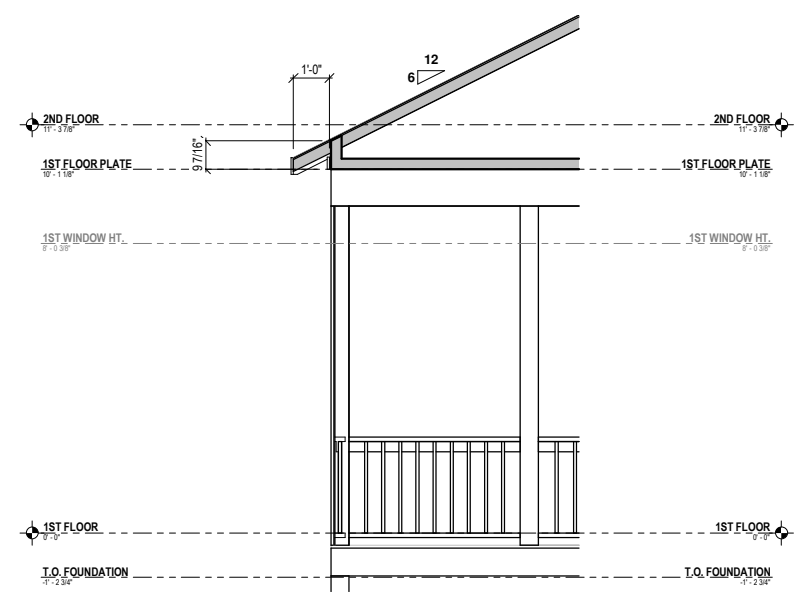
Lexington II - NC1 79  
 Caruso Homes  
 Second Floor Electrical

Date: 2/29/22  
 Drawn By: RDC  
 Checked By: SGM

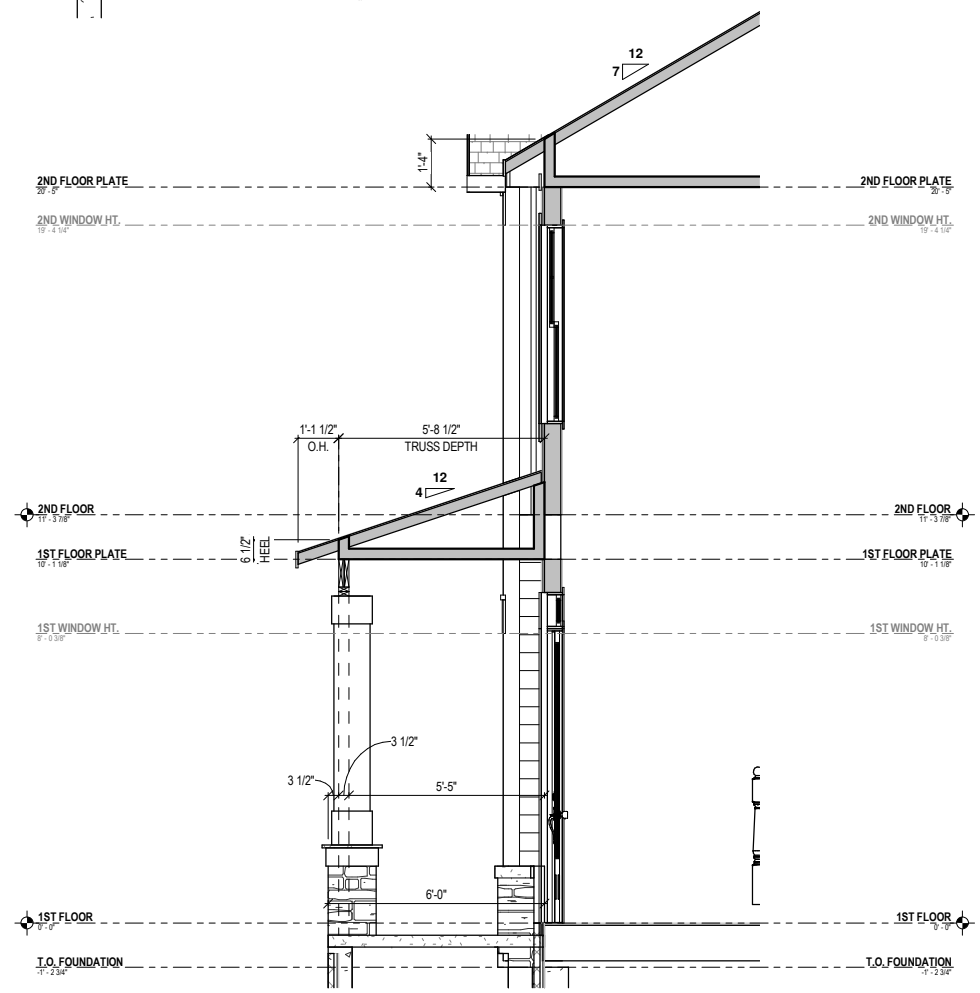




**3 Garage/House**  
17 3/16" = 1'-0" WHEN PRINTED ON 11"x17" / ANSI B PAPER SIZE



**2 Screened Porch**  
17 3/16" = 1'-0" WHEN PRINTED ON 11"x17" / ANSI B PAPER SIZE



**1 Front Porch**  
17 3/16" = 1'-0" WHEN PRINTED ON 11"x17" / ANSI B PAPER SIZE

Lexington II - NC1 79

Caruso Homes

Sections

Date: 2/29/22

Drawn By: sgm

Checked By: sgm