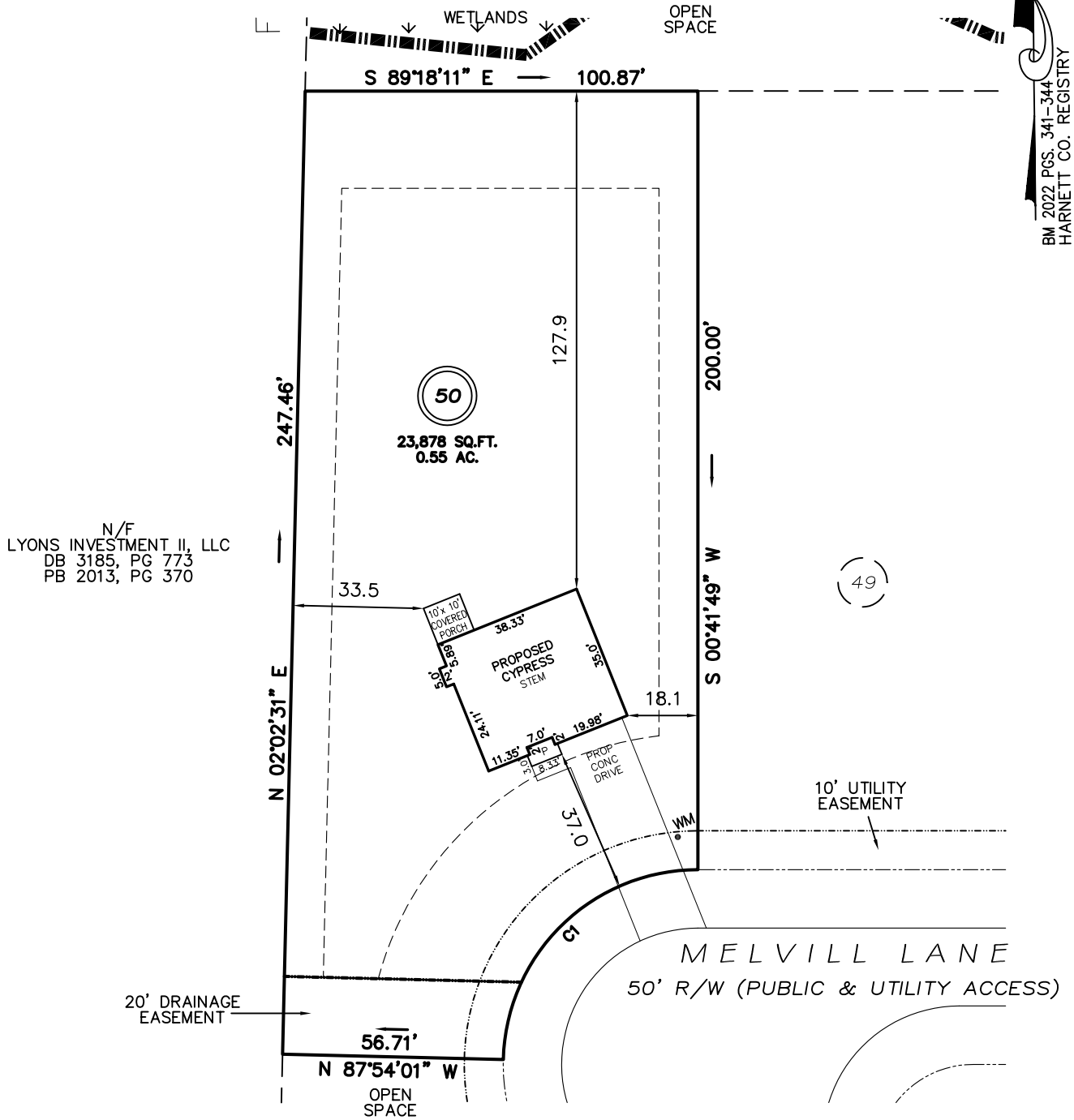


I, MICHAEL P. GRIFFIN, certify that under my direction and supervision this map was drawn from an actual field survey; that the error of closure of the survey as calculated by coordinates is 1: 10,000+; that the area shown hereon was calculated by coordinates.

Witness my hand and seal this day of MONTH 2022.



N/F
LYONS INVESTMENT II, LLC
DB 3185, PG 773
PB 2013, PG 370

BM 2022 PGS. 341-344
HARNETT CO. REGISTRY

IMPERVIOUS AREAS

HOUSE	1,477 SQ. FT.
DRIVE & WALKS	729 SQ. FT.
PATIO	0 SQ. FT.
TOTAL	2,206 SQ. FT.
ALLOWED	11,082 SQ. FT.

SETBACKS

FRONT	35'
REAR	25'
SIDE	10'
CORNER SIDE	20'

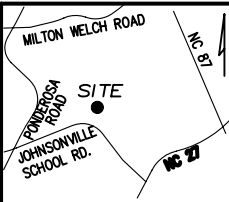
REVISION: RIGHT HAND 10/17/22

C1 R=50.00' L=77.32' S46°23'54"W 69.84'

PRELIMINARY
NOT FOR RECORDATION,
SALES OR CONVEYANCE

LEGEND

EIP	EXISTING IRON PIPE	FES	FLARED END SECTION
IPS	IRON PIPE SET	WM	WATER METER
R/W	RIGHT OF WAY	CO	CLEAN OUT
N/F	NOW OR FORMERLY	FH	FIRE HYDRANT
EIS	EXISTING IRON STAKE	CB	CATCH BASIN



GLS GRIFFIN LAND SURVEYING, INC.
P.O. BOX 148
FUQUAY-VARINA, NC 27526
(919) - 567 - 1963

PLOT PLAN
FOR
BEN STOUT
CONSTRUCTION
LIBERTY MEADOWS
LOT 50
MELVILL LANE
PINEVIEW, N.C.
HARNETT COUNTY JOHNSONVILLE TOWNSHIP

DRAWN BY KDF	DATE 7/25/22
CHECKED BY MPG	SCALE 1" = 40'