

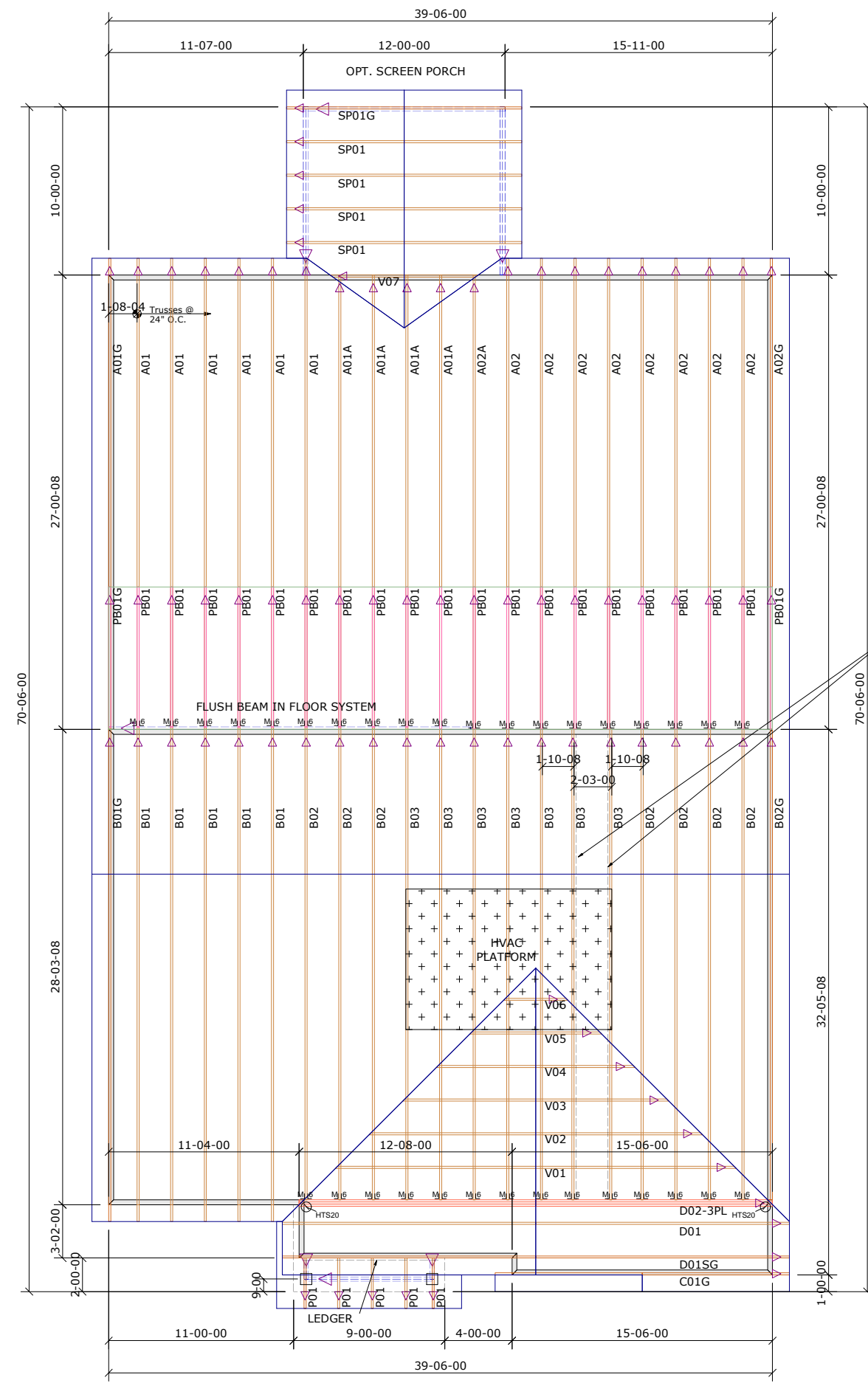
General Notes:
 - Per ANSI/TPI 1-2002 all " Truss to Wall" connections are the responsibility of the Building Designer, not the Truss Manufacturer.

- Dimensions are Feet-Inches- Sixteenths.
- Trusses are to be 24" o.c. unless noted otherwise (U.N.O.)
- Trusses are not designed to support brick U.N.O.
- Do not cut or modify trusses without first contacting Builders FirstSource.
- Immediately contact Builders FirstSource if trusses are damaged.

- Connection Notes:**
- All hangers are to be Simpson or equivalent U.N.O.
 - Use Manufacturer's specifications for all hanger connections U.N.O.
 - Use 10d x 1 1/2" Nails in hanger connections to single ply roof girder trusses.

- Floor Notes:**
- Shift truss as required to avoid plumbing traps.
 - Installation Contractor and/or Field Supervisor are to verify all dimensions, trap locations, and options prior to installation

- Dimension Notes:**
- Drawing not to scale. Do not scale dimensions



NOTE: LEFT END OF TRUSS AS SHOWN ON TRUSS DETAIL DRAWINGS ARE INDICATED BY TRIANGLE ICONS. ▲

SPACE TRUSSES 24" O.C. UNLESS A WIDE P.D.S. IS GOING TO BE INSTALLED. IF WIDE P.D.S. IS USED, FOLLOW SPECIAL TRUSS SPACING AS NOTED ON LAYOUT, & ATTACH 2x4 LEDGERS TO TOP & BOTTOM CHORDS w/12d NAILS @ 16" O.C.

Hanger List		All Tie Downs H2.5A Unless noted	
33	HTU26	M/Ls	
2	HTS20	M/Ls	
Special Items List			
Misc Material			
MATTAMY HOMES			
TETON		Elev:	CRAFTSMAN
PROVIDENCE CREEK			
WAKE CO.	NC	Lot:	103
Appwright #			
X			
Code: IRC 2015			
Loading:			
T.C.L.L.		20.0 lb/ft2	
B.C.L.L.		0.0 lb/ft2	
B.C.D.L.		10.0 lb/ft2	
Designed By:	MPH	T.C.D.L	10.0 lb/ft2
Layout:	CSPR	B.C.L.L.	0.0 lb/ft2
L/O Date:	8/16/21	B.C.D.L.	10.0 lb/ft2
Revision History			
Rev1:	xx/xx/xx	M.P.H.	115 mph
Rev2:	xx/xx/xx	Exposure Category	
Rev3:	xx/xx/xx	B	
Pick Ticket:	X	Job No.:	X
Sales No.:	X	Acct No.:	---

Hatch Legend	
	Attic Room
	Volume Ceiling
	Stick Framing

