

Attach rim board to joint w/1-100 box nail top & bottom of joint.

A3 Must have 1 3/4" minimum lateral load capacity refer to literature or load designer.

For information on lateral load capacity refer to literature or load designer.

A7 Nail rim typically 1/4" @ 12" oc. Deck nail typically 3/4" @ 6" oc. Wall sheathing. Joist spanning in either direction.

E1 LOAD BEARING CANTILEVER. 8" diameter maximum hole may be cut in each blocking panel for 1 1/2" x 1 1/2" joists. 6" diameter maximum for 3/4" joists or for blocking panels less than 12" long. Do not cut edges.

E1 Backer block: Install tight to top flange (left) to bottom flange with face mount hangers, both sides of web with single blocks. Attach with 10-10d (#2) box nails, clinched when possible.

H2 Filler block: Nail with 10-10d (#2) box nails, clinched when possible.

* With top flange hangers, backer block required only for diaphragm loads exceeding 250 lbs. or for uplift conditions (fastener load value is 250 lbs. for Limit States Design).

L6 CONNECTION OF MULTIPLE PIECES OF TOP-LOADED BEAMS. LVL 4 PSL (1 3/4" Width Pieces). Minimum of 2 rows 1/4" (3/8") nails @ 12" oc. Minimum of 3 rows 1/4" (3/8") nails @ 12" oc. for 14", 16", 18" beams. Multiple pieces of LVL 4 PSL can be nailed or bolted together to form a header or beam of the required size, up to a maximum width of 7 inches. Minimum of 2 rows 1/2" bolts @ 24" oc. staggered.

L6 For side-loaded multiple member beams, additional nailing or bolting may be required. See current Joist Standards.

LVL HANGER NAILS INSTALLATION

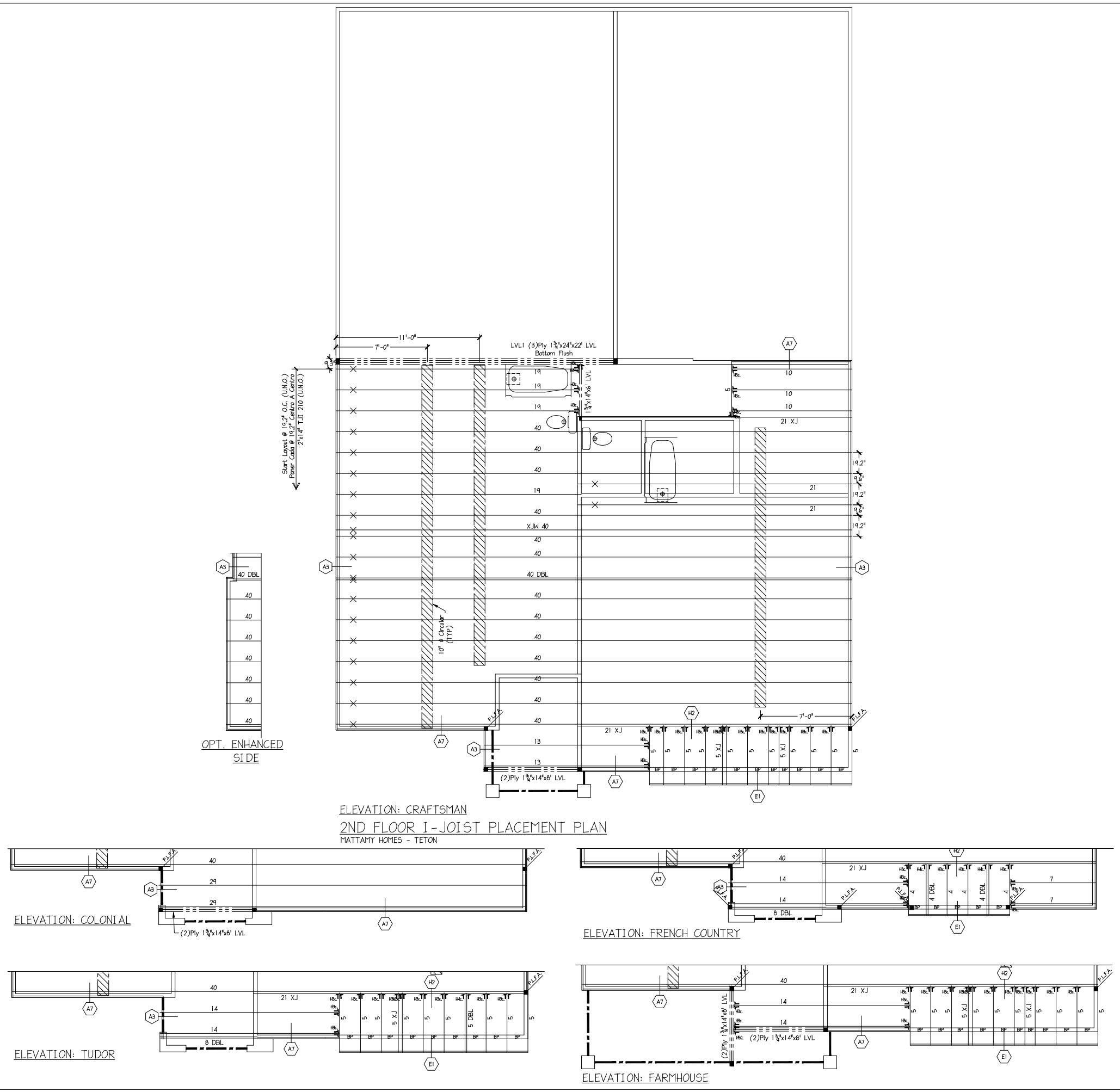
FILL ALL NAIL HOLES USING 16D COMMON (0.162 X 3 1/2") NAILS. DO NOT USE AIR GUN NAILS OR NIOD NAILS.

POINT LOAD FROM ABOVE (P.L.F.A.)

USE SOLID BLOCKING TO TRANSFER LOAD FROM ABOVE TO FOUNDATION.

DO NOT CUT ORANGE END NO CORTE EL COLOR NARANJA

"X" INDICATES ORANGE END "X" INDICAR EL COLOR NARANJA



ENGINEERED WOOD MATERIAL LIST

MATTAMY HOMES TETON 2ND FLOOR I-JOIST PLACEMENT PLAN

BASE - ELEVATION: CRAFTSMAN

MARK	QTY	CUT LENGTH	DESCRIPTION	GNotes
5	14	5'-0"	2" x 14" TJI 210	
10	3	10'-0"	2" x 14" TJI 210	
13	2	13'-0"	2" x 14" TJI 210	
19a	4	19'-0"	2" x 14" TJI 210 < 2	
21a	2	21'-0"	2" x 14" TJI 210	
21b	2	21'-0"	2" x 14" TJI 210 < 1	
40a	1	40'-0"	2" x 14" TJI 210 < 1	
40b	2	40'-0"	2" x 14" TJI 210 < 2	
40c	13	40'-0"	2" x 14" TJI 210 < 3	[Total 926]

BEAMS AND HEADERS

LVL	QTY	CUT LENGTH	DESCRIPTION
LVL	1	6'-0"	1 3/4" x 14" LVL 2.0E (Flush)
LVL	2	8'-0"	1 3/4" x 14" LVL 2.0E (Flush)
LVL1	3	22'-0"	1 3/4" x 24" LVL 2.0E (Flush)

ACCESSORIES & OTHER MATERIALS (Simpson Hangers)

ITEM	QTY	UNIT	DESCRIPTION
14" Rim	101	LF	1 1/2" x 14" TJ Rim 9 pcs@12" or 7 pcs@16"
BP	11	1'-5 1/8"	14" Blocking Panel [Total 22]
H41	1	PCS	HUS1.81/10 1 3/4" Face Mnt -Bm Hgr
H3c	21	PCS	IUS2.06/14 Single Face Mnt Hanger
10OUT14C	54	HOLE	10" Circular Cutout
TJGUIDE	1	PCS	TJI Placement Layout
TJGUIDE	1	PCS	TJI Installation Guide

ELEVATION: COLONIAL

MARK	QTY	CUT LENGTH	DESCRIPTION
5	-13	5'-0"	2" x 14" TJI 210
13	-2	13'-0"	2" x 14" TJI 210
21	-1	21'-0"	2" x 14" TJI 210
29	+2	29'-0"	2" x 14" TJI 210
40	-1	40'-0"	2" x 14" TJI 210 [Total -94]
H3c	-14	PCS	IUS2.06/14 Single Face Mnt Hanger [Total -16]
BP	-11	1'-5 1/8"	14" Blocking Panel [Total -16]
14" Rim	+4	LF	1 1/2" x 14" TJ Rim 0 pcs@12" or 0 pcs@16"

ELEVATION: FRENCH COUNTRY

MARK	QTY	CUT LENGTH	DESCRIPTION
4	+8	4'-0"	2" x 14" TJI 210
5	-13	5'-0"	2" x 14" TJI 210
7	+2	7'-0"	2" x 14" TJI 210
8	+2	8'-0"	2" x 14" TJI 210
13	-2	13'-0"	2" x 14" TJI 210
14	+2	14'-0"	2" x 14" TJI 210
40	-1	40'-0"	2" x 14" TJI 210 [Total -41]
H3c	-6	PCS	IUS2.06/14 Single Face Mnt Hanger
H4c	+2	PCS	M1U4.28/14 Double Face Mnt Hanger
BP	-6	1'-5 1/8"	14" Blocking Panel [Total -9]
14" Rim	+4	LF	1 1/2" x 14" TJ Rim 0 pcs@12" or 0 pcs@16"
LVL	-2	8'-0"	1 3/4" x 14" LVL 2.0E (Flush)

ELEVATION: TUDOR

MARK	QTY	CUT LENGTH	DESCRIPTION
5	-1	5'-0"	2" x 14" TJI 210
8	+2	8'-0"	2" x 14" TJI 210
13	-2	13'-0"	2" x 14" TJI 210
14	+2	14'-0"	2" x 14" TJI 210
40	-1	40'-0"	2" x 14" TJI 210 [Total -27]
H3c	-3	PCS	IUS2.06/14 Single Face Mnt Hanger
H4c	+1	PCS	M1U4.28/14 Double Face Mnt Hanger
BP	-2	1'-5 1/8"	14" Blocking Panel [Total -3]
14" Rim	+1	LF	1 1/2" x 14" TJ Rim 0 pcs@12" or 0 pcs@16"
LVL	-2	8'-0"	1 3/4" x 14" LVL 2.0E (Flush)

ELEVATION: FARMHOUSE

MARK	QTY	CUT LENGTH	DESCRIPTION
5	-1	5'-0"	2" x 14" TJI 210
13	-2	13'-0"	2" x 14" TJI 210
14	+2	14'-0"	2" x 14" TJI 210
40	-1	40'-0"	2" x 14" TJI 210 [Total -43]
H3c	+1	PCS	IUS2.06/14 Single Face Mnt Hanger
H50	+1	PCS	HUS410 3 1/2" Face Mnt -Bm Hgr
BP	-1	1'-5 1/8"	14" Blocking Panel [Total -2]
14" Rim	-3	LF	1 1/2" x 14" TJ Rim 0 pcs@12" or 0 pcs@16"
LVL	+2	8'-0"	1 3/4" x 14" LVL 2.0E (Flush)

OPT. ENHANCED SIDE

MARK	QTY	CUT LENGTH	DESCRIPTION
40	+1	40'-0"	2" x 14" TJI 210 [Total -40]
14" Rim	+1	LF	1 1/2" x 14" TJ Rim 0 pcs@12" or 0 pcs@16"

SCALE: 1/4" = 1'-0"

SEE MATERIAL LIST FOR DEPTH, SERIES & LENGTHS

INDICATES I-XEST
INDICATES TYPESHED HGR. LVL
INDICATES FLOOR-JOIST LVL
INDICATES PARALLEL PCL
INDICATES QUAD-LAY

INDICATES A SECTION FROM THE INSTALLATION GUIDE SERIES IS ALSO SHOWN ON THIS SHEET

LOAD BEARING WALL ABOVE =

EXTRA JOIST ACCD
EXTRA JOIST (1) UNDER WALL
DOUBLE JOIST (2)
TYPICAL BRIDGE PANEL
1-8" BRIDGE PANEL
1-UP OR 1-DW WITH BOARD
CONCENTRATED LOAD FROM ABOVE
WALL IS INDICATED BY HATCHING
INDICATED BY HATCHING

THIS SHOP DRAWING IS BASED ON THE FOLLOWING

PROJECT LOCATION: _____
PROJECT NUMBER: _____
ARCHITECT DWG: BY: _____
ARCHITECT REVISION: _____
CHECKED BY: _____
STRUCTURAL REVIEW BY: _____
DATE: _____

DESIGN DATA

LIVE 40 PSF
DEAD 10 PSF
TOTAL LOAD = 50 PSF

STRESS DURATION = 100%
DEFLECTION CRITERIA: (L/480)

Builders FirstSource

MATTAMY HOMES
TETON
2ND FLOOR I-JOIST PLACEMENT PLAN
DATE: MONDAY, 8 NOVEMBER 2021 - 10:03 AM
FILE: I:\MATTAMY\TJ\ACADDWG\MATTAMY HOMES\TETON.DWG

DRAWN BY: NJH DATE: 11/8/21
SHEET: 2 OF 2 SHEETS