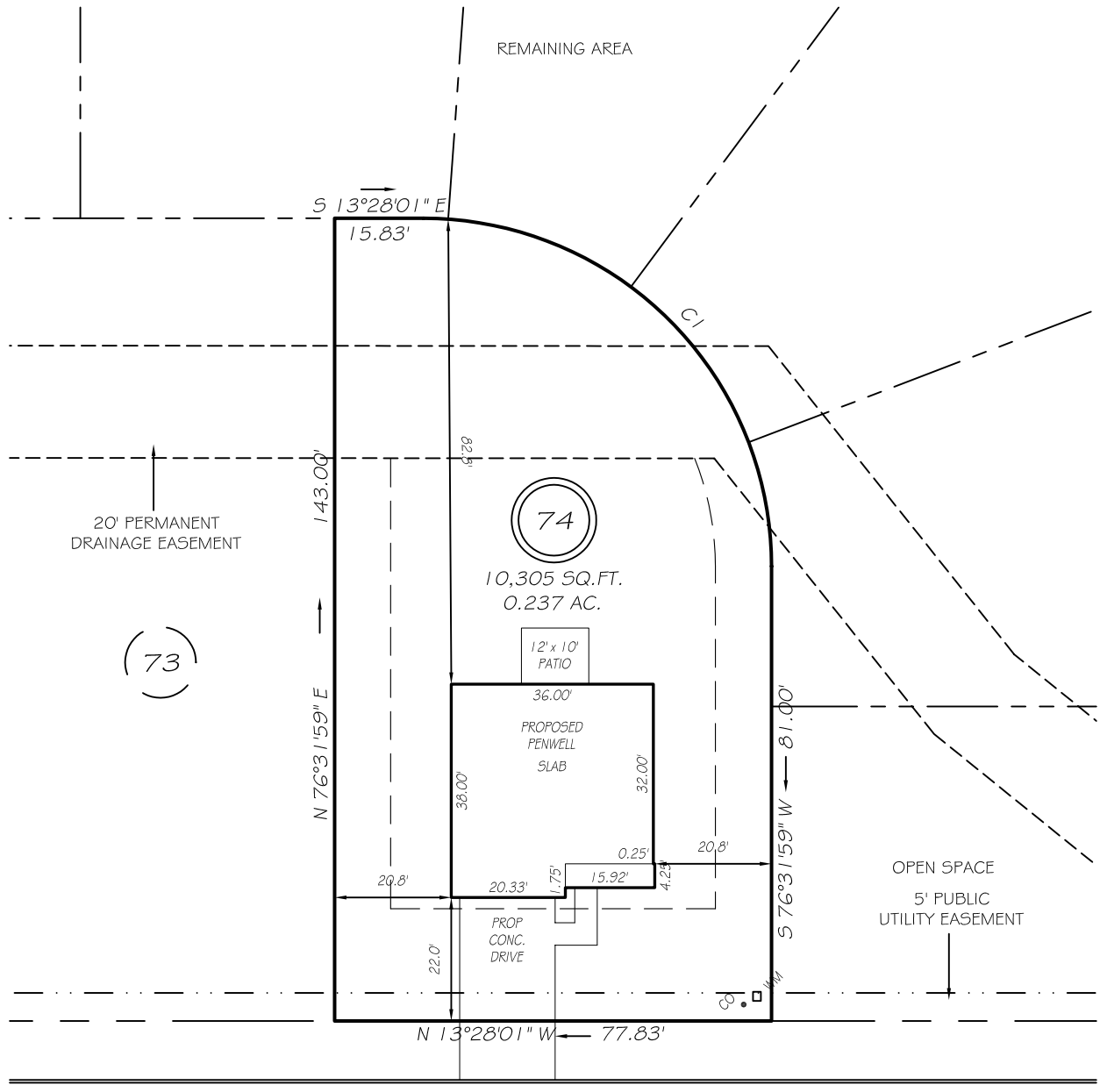


I, MICHAEL P. GRIFFIN, certify that under my direction and supervision this map was drawn from an actual field survey; that the error of closure of the survey as calculated by coordinates is 1: 10,000+; that the area shown hereon was calculated by coordinates.

Witness my hand and seal this day of MONTH 2022.

BM 2022 PGS 156-162  
HARNETT CO. REGISTRY



WINTERBERRY WAY  
50' PUBLIC RW & UTILITY

SETBACKS

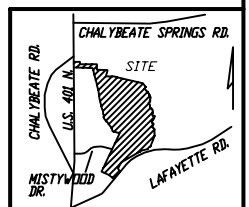
FRONT	20'
REAR	15'
SIDE	10'
CORNER SIDE	15'

CI R=62.00' L=97.39' N31°31'59"E 87.68'

**PRELIMINARY**  
NOT FOR RECORDATION,  
SALES OR CONVEYANCE

LEGEND

EIP	EXISTING IRON PIPE	FES	FLARED END SECTION
IP'S	IRON PIPE SET	WM	WATER METER
RW	RIGHT OF WAY	CO	CLEAN OUT
N/F	NOW OR FORMERLY	FH	FIRE HYDRANT
EIS	EXISTING IRON STAKE	CB	CATCH BASIN



**GRIFFIN LAND SURVEYING, INC.**

P. O. BOX 148  
FUQUAY-VARINA, NC 27526  
(919) - 567 - 1963

**PLOT PLAN**  
FOR

**D. R. HORTON**

**WOODGROVE**

**LOT 74**

WINTERBERRY WAY

NORTH CAROLINA

HARNETT CO. HECTOR'S CREEK TWSHP

DRAWN BY NMF

DATE 5/13/22

CHECKED BY MPG

SCALE 1" = 30'