

IMPERVIOUS SURFACE AREA	
DESCRIPTION	AREA
HOUSE w/ PORCH	2,428 S.F.
SC PORCH/HVAC	164 S.F.
DRIVEWAY & WALKS	1,208 S.F.
TOTAL (PROPOSED)=	3,800 S.F.
*TOTAL (ALLOWED)=	5,000 S.F.

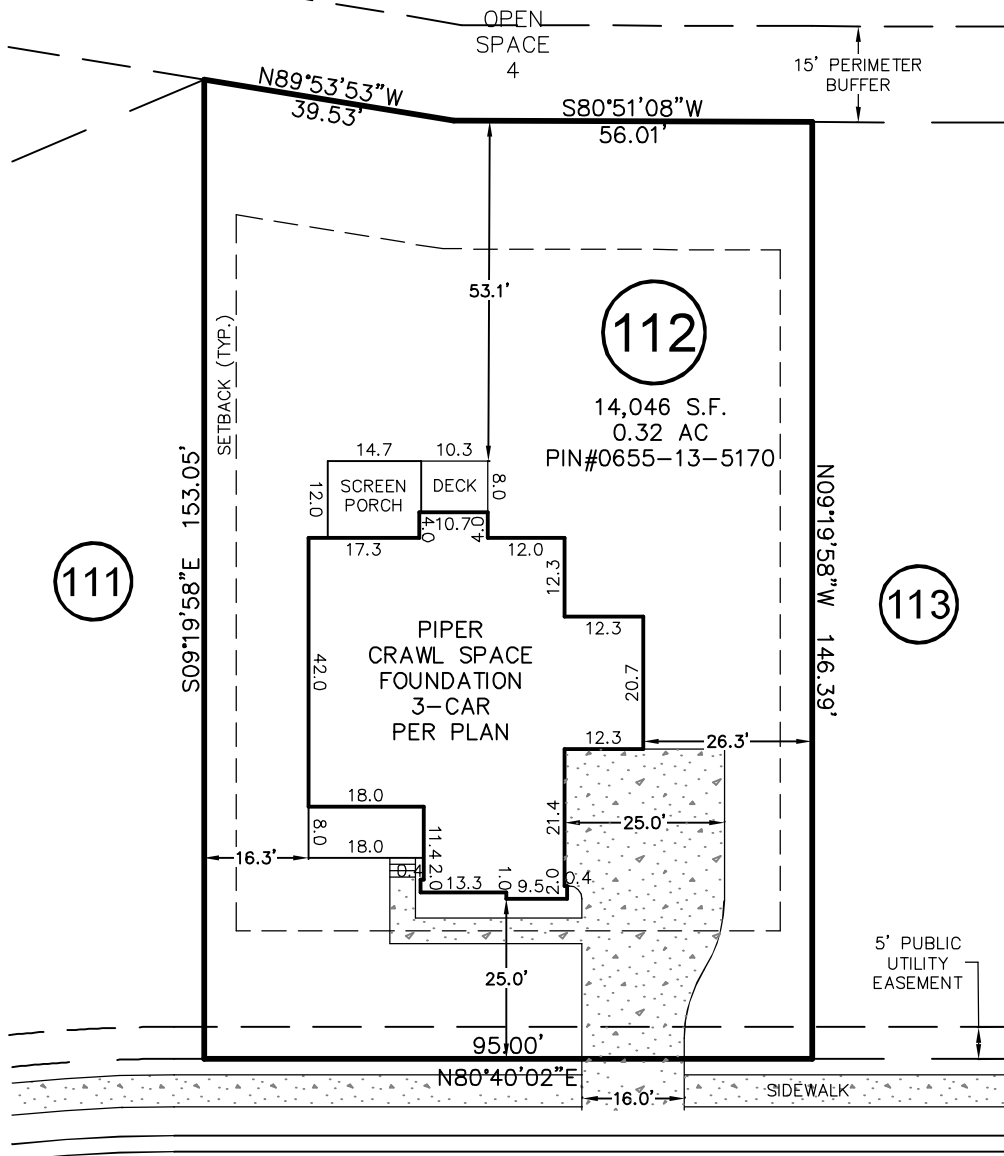
* PB 2022 PG 434

VICINITY MAP
Not To Scale

SETBACKS: (PB 2022 PG 434-448)

- FRONT - 20'
- REAR - 20'
- SIDE - 5'
- CORNER - 12'

PB 2022 PG 434-448



111

112

113

INSPIRATION WAY

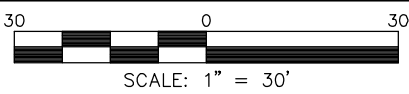
50' PUBLIC R/W
& UTILITY

REV. #	DATE	REVISOR	COMMENT
REV. 1	9/19/22	JWW	MOVED HOUSE TO 25' FROM FRONT PER DEVELOPERS REQUEST

THIS PROPERTY MAY BE SUBJECT TO ANY AND ALL APPLICABLE DEED RESTRICTIONS, EASEMENTS, RIGHT-OF-WAY, UTILITIES AND RESTRICTIVE COVENANTS WHICH MAY BE OF RECORD OR IMPLIED

THIS DRAWING DOES NOT REFLECT AS-BUILT INFORMATION

PRELIMINARY PLAT
NOT FOR RECORDATION, CONVEYANCES, OR SALES.



RESIDENTIAL LAND SERVICES, PLLC.

1917 Evans Road
Cary, North Carolina 27513
Phone (919) 378-9316
Firm License # P-0873

HOUSE LOCATION PLOT PLAN

FOR
#47 INSPIRATION WAY
LOT 112, SERENITY SUBDIVISION, PHASE 1 (LOTS GREATER THAN 9,000 S.F.)
Hector's Creek Township, Harnett County, North Carolina

PROPERTY OF: TRIPLE A HOMES
MAP BOOK 2022 PAGE 434-448 DEED REFERENCE _____

DRAWN BY: JSH

DATE: AUGUST 26, 2022