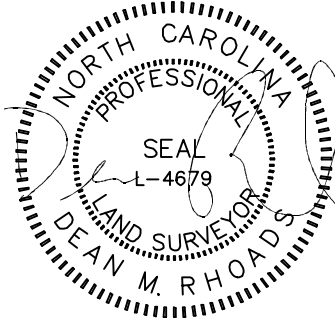


VICINITY MAP
Not To Scale

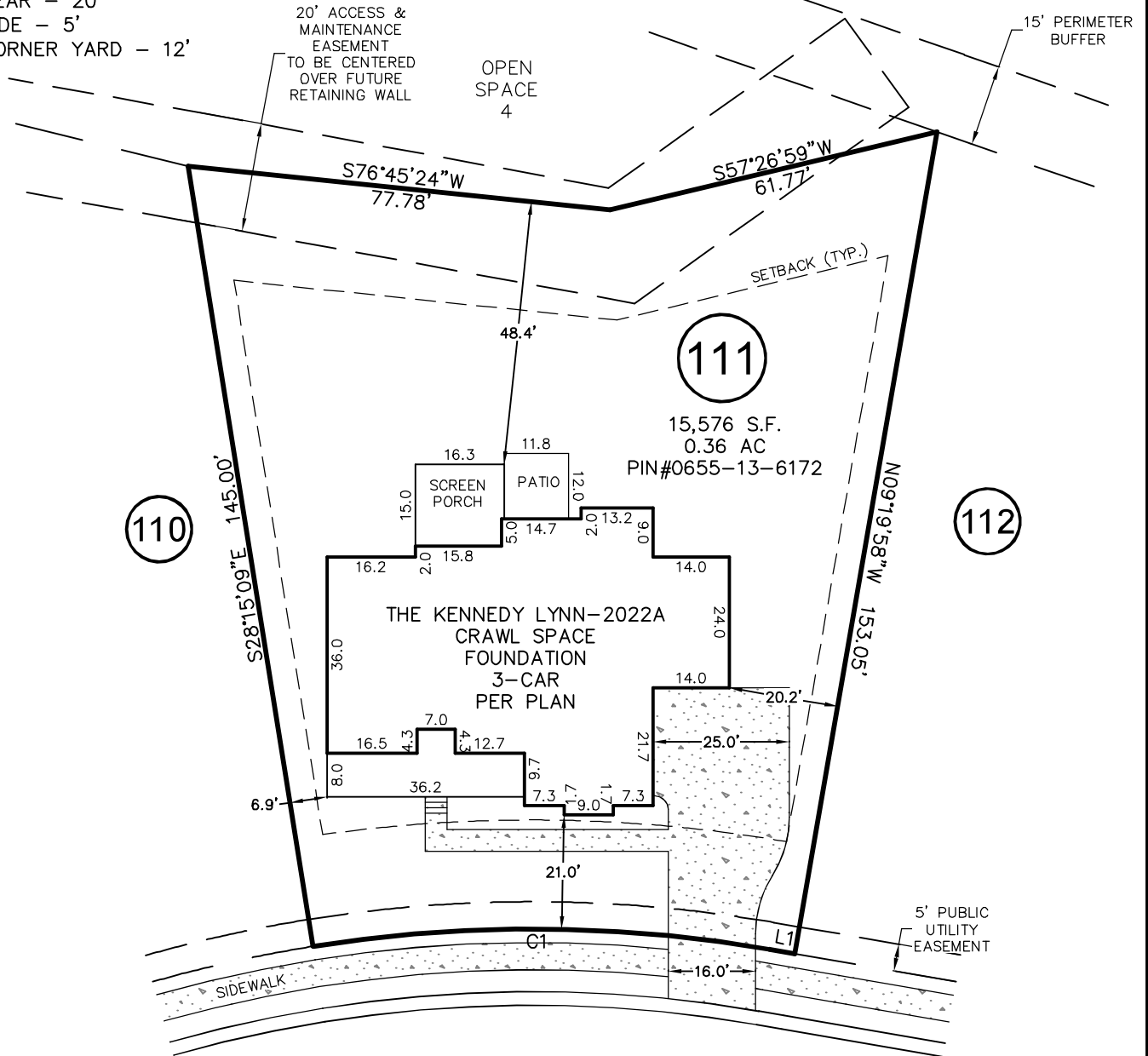


IMPERVIOUS SURFACE AREA	
DESCRIPTION	AREA
HOUSE w/ PORCH	3,276 S.F.
PORCH/HVAC/MISC.	403 S.F.
DRIVEWAY & WALKS	1,217 S.F.
TOTAL (PROPOSED)=	4,896 S.F.
*TOTAL (ALLOWED)=	5,000 S.F.

* PB 2022 PG 434

SETBACKS: (PB 2022, PG 434)

FRONT - 20'
REAR - 20'
SIDE - 5'
CORNER YARD - 12'



INSPIRATION WAY

50' PUBLIC R/W
& UTILITY

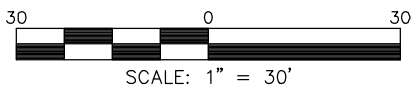
LINE	BEARING	DISTANCE
L1	N80°40'02"E	4.67'

CURVE	RADIUS	ARC LENGTH	CH LENGTH	CH BEARING
C1	255.00'	84.20'	83.82'	N71°12'26"E

THIS PROPERTY MAY BE SUBJECT TO ANY AND ALL APPLICABLE DEED RESTRICTIONS, EASEMENTS, RIGHT-OF-WAY, UTILITIES AND RESTRICTIVE COVENANTS WHICH MAY BE OF RECORD OR IMPLIED

THIS DRAWING DOES NOT REFLECT AS-BUILT INFORMATION

PRELIMINARY PLAT
NOT FOR RECORDATION, CONVEYANCES, OR SALES.



RESIDENTIAL LAND SERVICES, PLLC.

1917 Evans Road
Cary, North Carolina 27513
Phone (919) 378-9316
Firm License # P-0873

HOUSE LOCATION PLOT PLAN

FOR
#31 INSPIRATION WAY
LOT 111, SERENITY SUBDIVISION, PH 1 (LOTS GREATER THAN 9,000 S.F.)
Hector's Creek Township, Harnett County, North Carolina

PROPERTY OF: TRIPLE A HOMES
MAP BOOK 2022 PAGE 434-448 DEED REFERENCE _____

DRAWN BY: JSH

DATE: AUGUST 23, 2022