

## ABBREVIATIONS

ACC.	= ACCESS
BWL.	= BRACED WALL LINE
BWP.	= BRACED WALL PANEL
C.O.	= CASED OPENING
C.J.	= CEILING JOIST
CLOS.	= CLOSET
COL.	= COLUMN
COMP.	= COMPOSITION
CONC.	= CONCRETE
CONT.	= CONTINUOUS
C.M.A.	= CARBON MONOXIDE ALARM
C.M.U.	= CONCRETE MASONRY UNIT
D.H.	= DOUBLE HUNG
DIA.	= DIAMETER
D.J.	= DOUBLE JOIST
DN.	= DOWN
EXH.	= EXHAUST
EXT.	= EXTERIOR
FL.J.	= FLOOR JOIST
FTG.	= FOOTING
G.F.I.	= GROUND FAULT INTERRUPTER
H.B.	= HOSE BIB
LVL.	= LAMINATED VENEER LUMBER
M.O.	= MASONRY OPENING
M.S.	= MASONRY
MAX.	= MAXIMUM
M.C.	= MEDICINE CABINET
MTL.	= METAL
MIN.	= MINIMUM
O.C.	= ON CENTER
OSB	= ORIENTED STRAND BOARD
PERF.	= PERFORATED
REC.	= RECESSED
REINF.	= REINFORCED
SCR.	= SCREENED
S.D.	= SMOKE DETECTOR
SEC.	= SECOND
SHWR.	= SHOWER
S.Y.P.	= SOUTHERN YELLOW PINE
S.P.F.	= SPRUCE/PINE/FIR
SUSP.	= SUSPENDED
TYP.	= TYPICAL
U.O.N.	= UNLESS OTHERWISE NOTED
WASH.	= WASHER
W.H.	= WATER HEATER
W.P.	= WEATHER PROOF
W.W.M.	= WELDED WIRE MESH
WDW. HT.	= WINDOW HEIGHT
WD.	= WOOD

## SYMBOLS

—○—	= HOSE BIB
S	= SWITCH
S <sub>3</sub>	= 3-WAY SWITCH
⊙	= LIGHT FIXTURE
⊞	= EXHAUST FAN & LIGHT
⊞	= SMOKE DETECTOR
▽	= SHOWER HEAD
▲	= TELEPHONE JACK
⊖	= CONVENIENCE OUTLET
⊕	= 220 VOLT OUTLET
⊖	= GROUND FAULT INTERRUPTER
⊞	= CEILING FAN
⊞	= CARBON MONOXIDE ALARM

## GENERAL NOTES AND SPECIFICATIONS

### COPYRIGHT

THIS PLAN IS PROTECTED UNDER THE FEDERAL COPYRIGHT ACT. REPRODUCTION IN WHOLE OR IN PART, INCLUDING DIRECT COPYING AND/OR PREPARATION OF DERIVATIVE WORKS, FOR ANY REASON WITHOUT THE PRIOR WRITTEN CONSENT FROM STANDARD HOMES PLAN SERVICE, INC. IS STRICTLY PROHIBITED.

### ORIGINAL PURCHASE AGREEMENT

SEE ATTACHED CONSTRUCTION LICENSE FOR INVOICE NUMBER 12983

### BUILDING CODE INFORMATION

THIS PLAN HAS BEEN DRAWN TO CONFORM TO THE NORTH CAROLINA RESIDENTIAL CODE, 2018 EDITION (2015 INTERNATIONAL RESIDENTIAL CODE FOR ONE- AND TWO-FAMILY DWELLINGS, CURRENT EDITION) WITH AMENDMENTS UNLESS OTHERWISE NOTED. (SEE ATTACHMENTS)

### PRIOR TO CONSTRUCTION

THE CONTRACTOR SHALL REVIEW THE PLAN(S) FOR THIS PARTICULAR BUILDING PROJECT TO ENSURE COMPLIANCE WITH ALL NATIONAL, STATE AND LOCAL CODES, CLIMATIC GEOGRAPHIC DESIGN CRITERIA, AND ANY OTHER PROVISIONS THAT MAY BE REQUIRED BY VA/FHA/RD.

THE CONTRACTOR SHALL VERIFY PLAN DIMENSIONS, STRUCTURAL COMPONENTS, AND GENERAL SPECIFICATIONS CONTAINED IN THIS SET OF PLANS AND REPORT ANY DISCREPANCIES TO STANDARD HOMES PLAN SERVICE, INC. FOR JUSTIFICATION OR CORRECTION BEFORE PROCEEDING WITH WORK ON HOUSE.

THE CONTRACTOR SHALL DETERMINE ROUGH OPENING SIZES FOR ALL BUILT-IN EQUIPMENT AND/OR FACILITIES AND ADJUST PLAN DIMENSIONS AS REQUIRED.

DO NOT SCALE FROM BLUEPRINTS. REFER TO THE LABELED DIMENSIONS FOR ACTUAL MEASUREMENTS.

IT SHALL BE THE RESPONSIBILITY OF THE OWNER/BUILDER TO PROVIDE FOR THE SERVICES OF A PROFESSIONAL ENGINEER IF REQUIRED BY THE BUILDING CODE OFFICIAL.

### SHIPPING DATE : 05-13-2022

STAMP MUST APPEAR IN RED. PLANS FOR WHICH A BUILDING PERMIT HAS NOT BEEN OBTAINED ONE YEAR FROM THE ABOVE DATE IS SUBJECT TO REVIEW BY STANDARD HOMES PLAN SERVICE, INC. A FEE MAY BE CHARGED FOR THIS SERVICE.

### EXCAVATION

EXCAVATE TO UNDISTURBED SOIL. BOTTOM OF FOOTING SHALL EXTEND BELOW LOCAL FROST LINE AND TO A MINIMUM DEPTH OF 12" BELOW ADJACENT GRADE. (PRESUMED 2000 PSF SOIL BEARING CAPACITY).

EXPANSIVE, COMPRESSIVE OR SHIFTING SOILS SHALL BE REMOVED TO A DEPTH AND WIDTH SUFFICIENT TO ASSUME A STABLE MOISTURE CONTENT IN EACH ACTIVE ZONE.

### FOUNDATION

PROVIDE 1/2" DIA. STEEL ANCHOR BOLTS 6"-0" O.C., 1'-0" MAX. FROM CORNERS AND 1'-0" MAX. FROM ENDS OF EACH PLATE SECTION, WITH 7" MIN. EMBEDMENT.

PROVIDE FOUNDATION WATERPROOFING AND DRAIN WITH POSITIVE SLOPE TO OUTLET AS REQUIRED BY SITE CONDITIONS.

SLOPE GRADE AWAY FROM FOUNDATION WALLS 6" MINIMUM WITHIN THE FIRST 10 FEET.

PROVIDE PRESSURE TREATED LUMBER FOR SILLS, PLATES, BANDS AND ANY LUMBER IN CONTACT WITH MASONRY.

PROVIDE APPROVED AND BONDED CHEMICAL SOIL TREATMENT AGAINST FUNGUS, TERMITES AND OTHER HARMFUL INSECTS.

### CRAWL SPACE

ALL GIRDER JOINTS AND ENDS OF GIRDERS SHALL REST ON SOLID BEARINGS. FILL CORES OF HOLLOW MASONRY TO FOOTING WITH CONCRETE. FILL TOP COURSE CORES OF EXTERIOR FOUNDATION WALL WITH CONCRETE.

FOOTINGS SHALL EXTEND 6" AND SHALL BE 12" THICK UNDER GIRDER PIERS.

CHIMNEY FOOTING SHALL EXTEND 12" MINIMUM BEYOND EACH SIDE AND SHALL BE AT LEAST 12" THICK.

### BASEMENT

ALL GIRDER JOINTS SHALL BREAK ON COLUMN CENTER LINES (STAGGERED) AND ENDS OF GIRDERS SHALL REST ON SOLID MASONRY.

DOUBLE SILL AND USE LEOGER OVER ALL BASEMENT OPENINGS.

ALL BASE. SASH SHALL BE 18/20 2-LT. 3'-3 7/8" X 1'-11 15/16" 3x20 HB.

### FRAMING

ALL FLOOR JOISTS, CEILING JOISTS, RAFTERS, GIRDERS, HEADERS, SILLS AND BEAMS SHALL BE NO. 2 SPRUCE/PINE/FIR (S.P.F.) UNLESS OTHERWISE INDICATED.

ALL LOAD BEARING WALLS SHALL BE STUD GRADE SPRUCE/PINE/FIR (S.P.F.) UNLESS OTHERWISE INDICATED.

DESIGN SPECIFICATIONS FOR LAMINATED VENEER LUMBER (LVL) BEAMS AND HEADERS :  
GRADE : 2850Fb-2.0E  
BENDING Fb : 2850  
MOE : 2.0 X 10<sup>6</sup>  
SHEAR Fv : 290

### SUPPORT FOR HEADERS:

HEADERS SHALL BE SUPPORTED ON EACH END WITH ONE OR MORE JACK STUDS OR WITH APPROVED FRAMING ANCHORS IN ACCORDANCE WITH BUILDING CODE (SEE PLAN). THE FULL-HEIGHT STUD ADJACENT TO EACH END OF THE HEADER SHALL BE END NAILLED TO EACH END OF THE HEADER WITH FOUR-16D NAILS. SEE TABLE BELOW.

MINIMUM NUMBER OF FULL HEIGHT STUDS AT EACH END OF HEADERS IN EXTERIOR WALLS:

HEADER SPAN (FEET)	MAXIMUM STUD SPACING (INCHES)
3 FEET OR LESS	16
4 FT.	1
8 FT.	2
12 FT.	3
16 FT.	4

## CLIMATIC AND GEOGRAPHICAL DESIGN CRITERIA

ROOF LIVE LOAD (POUNDS PER SQUARE FOOT) : 20 PSF

ULTIMATE DESIGN WIND SPEED (MILES PER HOUR) : 120 MPH

NOMINAL DESIGN WIND SPEED : 93 MPH

EXPOSURE CATEGORY "B" UNLESS OTHERWISE NOTED

WINDOW DESIGN PRESSURE RATING : DP 25

COMPONENT AND CLADDING LOADS FOR A BUILDING WITH A MEAN ROOF HEIGHT OF 30 FEET OR LESS:

PRESSURE ZONE	115	120	130	140
ZONE 1	13.1, -14.0	14.2, -15.0	16.7, -18.0	19.4, -21.0
ZONE 2	13.1, -16.0	14.2, -18.0	16.7, -21.0	19.4, -24.0
ZONE 3	13.1, -16.0	14.2, -18.0	16.7, -21.0	19.4, -24.0
ZONE 4	14.3, -15.0	15.5, -16.0	18.2, -19.0	21.2, -22.0
ZONE 5	14.3, -19.0	15.5, -20.0	18.2, -24.0	21.2, -28.0

ASSUMED MEAN ROOF HEIGHT: 16'-1"

SEISMIC CONDITION BY ZONE : ZONES A AND B

SUBJECT TO DAMAGE FROM WEATHERING : MODERATE

CLIMATE ZONES (UNLESS OTHERWISE NOTED): ZONES 3 AND 4

MINIMUM VALUES FOR ENERGY COMPLIANCE:

CEILING R-38; EXTERIOR WALLS R-15; SLAB

WINDOW U-FACTOR ≤ 0.35; RECOMMENDED SHGC ≤ 0.30

## MISCELLANEOUS

LOCATE ALL CONVENIENCE OUTLETS ABOVE KITCHEN BASE CABINETS 42" ABOVE FINISHED FLOOR.

### EMERGENCY EGRESS REQUIREMENTS

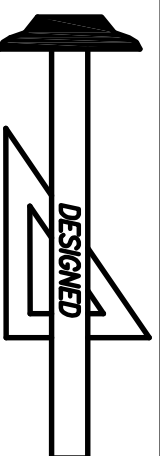
IT SHALL BE THE RESPONSIBILITY OF THE OWNER/BUILDER TO VERIFY CONFORMITY WITH EGRESS REQUIREMENTS BASED ON SPECIFICATIONS PROVIDED BY WINDOW MANUFACTURER.

2018 NORTH CAROLINA RESIDENTIAL CODE

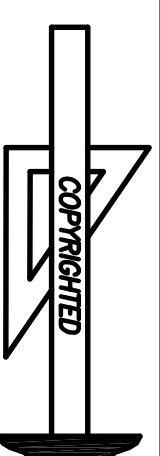
THE REQUIRED EGRESS WINDOW FROM EVERY SLEEPING ROOM SHALL HAVE A SILE HEIGHT OF NOT MORE THAN 44 INCHES ABOVE FINISHED FLOOR. THE NET CLEAR OPENING HEIGHT SHALL BE AT LEAST 20 INCHES AND THE NET CLEAR OPENING WIDTH SHALL BE AT LEAST 20 INCHES. IN ADDITION THE MINIMUM TOTAL GLASS AREA SHALL NOT BE LESS THAN 5.7 SQUARE FEET IN THE CASE OF A SECOND STORY WINDOW AND NOT LESS THAN 5.7 SQUARE FEET IN THE CASE OF A SECOND STORY WINDOW.

2015 INTERNATIONAL RESIDENTIAL CODE

THE REQUIRED EGRESS WINDOW FROM EVERY SLEEPING ROOM SHALL HAVE A SILE HEIGHT OF NOT MORE THAN 44 INCHES ABOVE FINISHED FLOOR. ALL EMERGENCY ESCAPE AND RESCUE OPENINGS SHALL HAVE A MINIMUM NET CLEAR OPENING OF 5.7 SQUARE FEET EXCEPT GRADE FLOOR OPENINGS SHALL HAVE A MINIMUM NET OPENING OF 5 SQUARE FEET. THE MINIMUM NET CLEAR OPENING HEIGHT SHALL BE 24 INCHES. THE MINIMUM NET CLEAR OPENING WIDTH SHALL BE 20 INCHES.



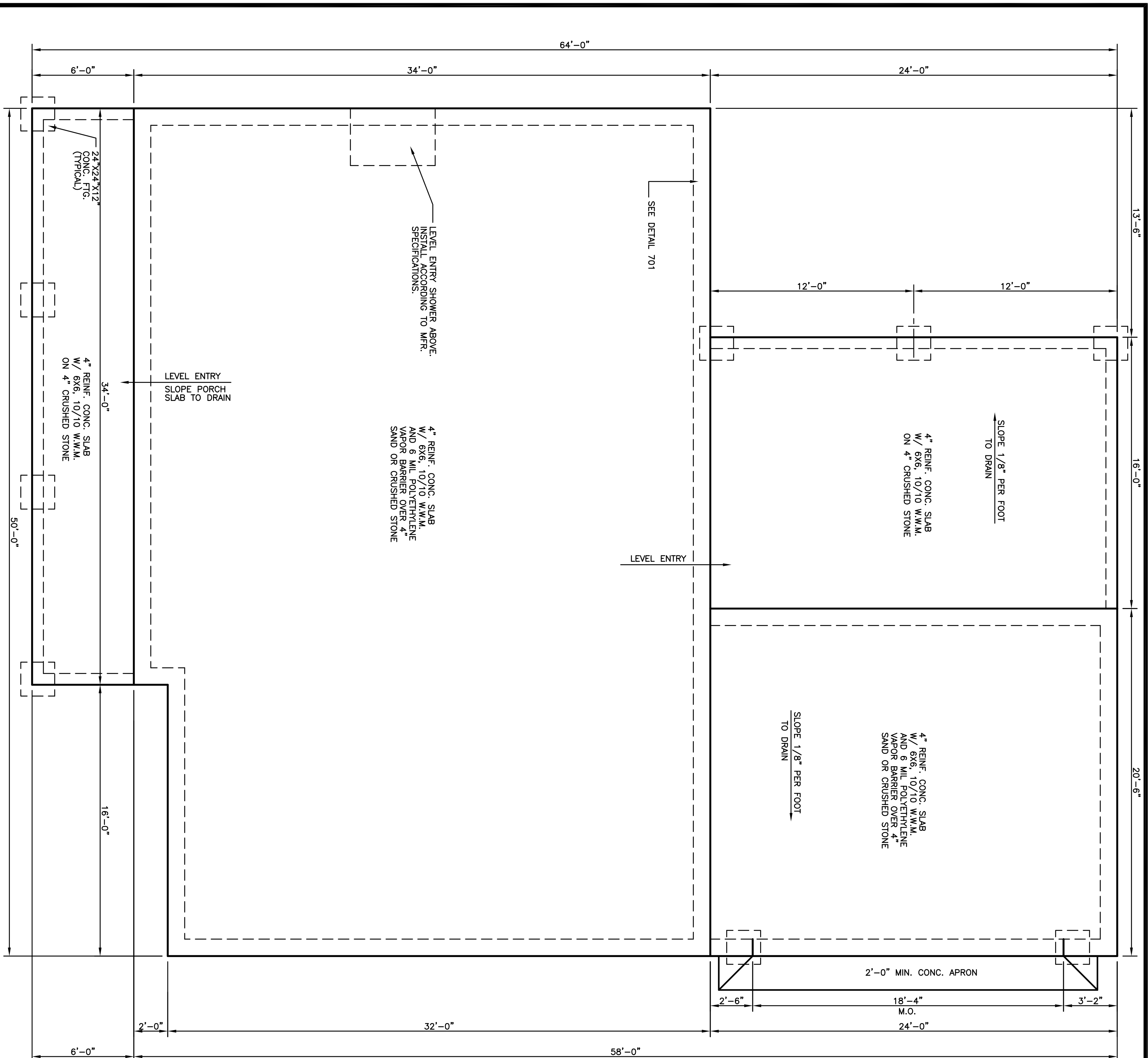
**Standard Homes Plan Service, Inc.**  
7200 SUNSET LAKE ROAD FUQUAY-VARINA, NC 27526  
(919)552-5677



MARJORIE MIXEN  
156 FLETCHER RD  
FUQUAY VARINA, NC, 27526

DESIGNED FOR	PLAN	NO.	MAT'L	SHOWN	SHEET
MARJORIE MIXEN	JERICHO	6J	SID.		1 OF 8 F.R.M.

REVISED 04-11-22  
FLOATING SLAB  
TRUSS CONSTRUCTION



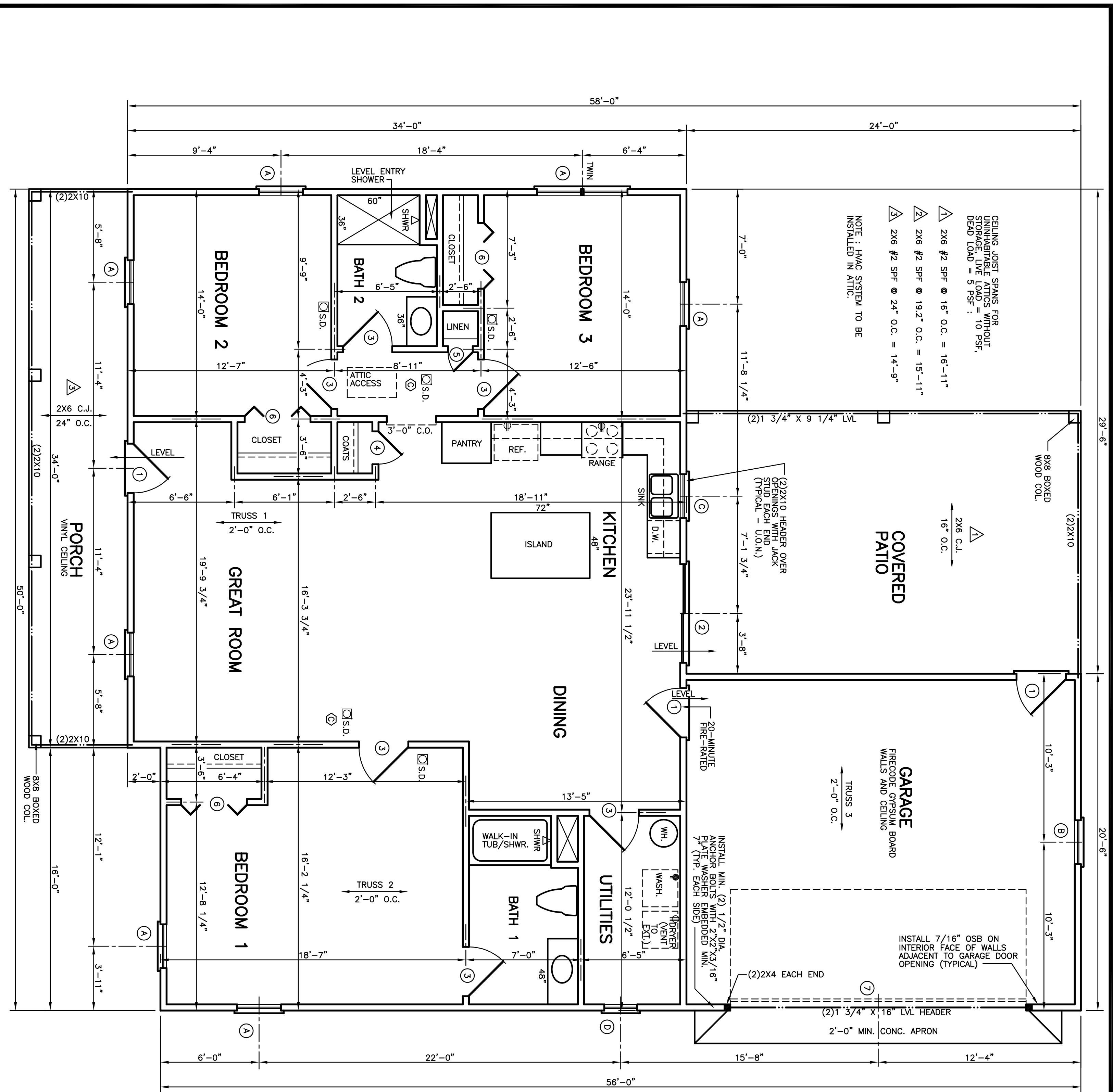
**FOUNDATION PLAN**  
 SCALE : 1/4"=1'-0"

MARLORE MIXEN  
 156 FLETCHER RD  
 FUQUAY VARIANA, NC, 27526

REVISED: 04-11-22  
 FLOATING SLAB  
 TRUSS CONSTRUCTION

**Standard Homes Plan Service, Inc.**  
 7200 SUNSET LAKE ROAD FUQUAY-VARINA, NC 27526 (919)552-5677

DESIGNED FOR	MARLORE MIXEN	SHEET	2 OF 8
PLAN	JERICHO	NO.	6J
		MATERIAL	SID.
		SHOWN	F.R.M.



CEILING JOIST SPANS FOR UNINHABITABLE ATTICS WITHOUT STORAGE, LIVE LOAD = 10 PSF, DEAD LOAD = 5 PSF :

- 1 2X6 #2 SPF @ 16" O.C. = 16'-11"
- 2 2X6 #2 SPF @ 19.2" O.C. = 15'-11"
- 3 2X6 #2 SPF @ 24" O.C. = 14'-9"

NOTE : HVAC SYSTEM TO BE INSTALLED IN ATTIC.

INSTALL MIN. (2) 1/2" DIA. ANCHOR BOLTS WITH 2"X2"X3/16" PLATE WASHER EMBEDDED MIN. 7" (TYP. EACH SIDE)

INSTALL 7/16" OSB ON INTERIOR FACE OF WALLS ADJACENT TO GARAGE DOOR OPENING (TYPICAL)

**WINDOW SCHEDULE**

A	2'-8" X 6'-2" WD. D.H.
B	2'-8" X 4'-6" WD. D.H.
C	2'-8" X 4'-2" WD. D.H.
D	2'-0" X 4'-2" WD. D.H.
E	
F	
G	
H	
J	
K	
L	
M	
N	

**DOOR SCHEDULE**

1	3'-0" X 6'-8" X 1 3/4"
2	SLIDING GLASS DOOR 6'-0" X 6'-8" X 1 3/4"
3	3'-0" X 6'-8" X 1 3/8"
4	2'-0" X 6'-8" X 1 3/8"
5	1'-6" X 6'-8" X 1 3/8"
6	BI-FOLD 4'-0" X 6'-8" X 1 3/8"
7	OVERHEAD GARAGE 18'-0" X 7'-0"
8	
9	
10	
11	
12	
13	
14	

**FLOOR PLAN**

SCALE : 1/4"=1'-0"

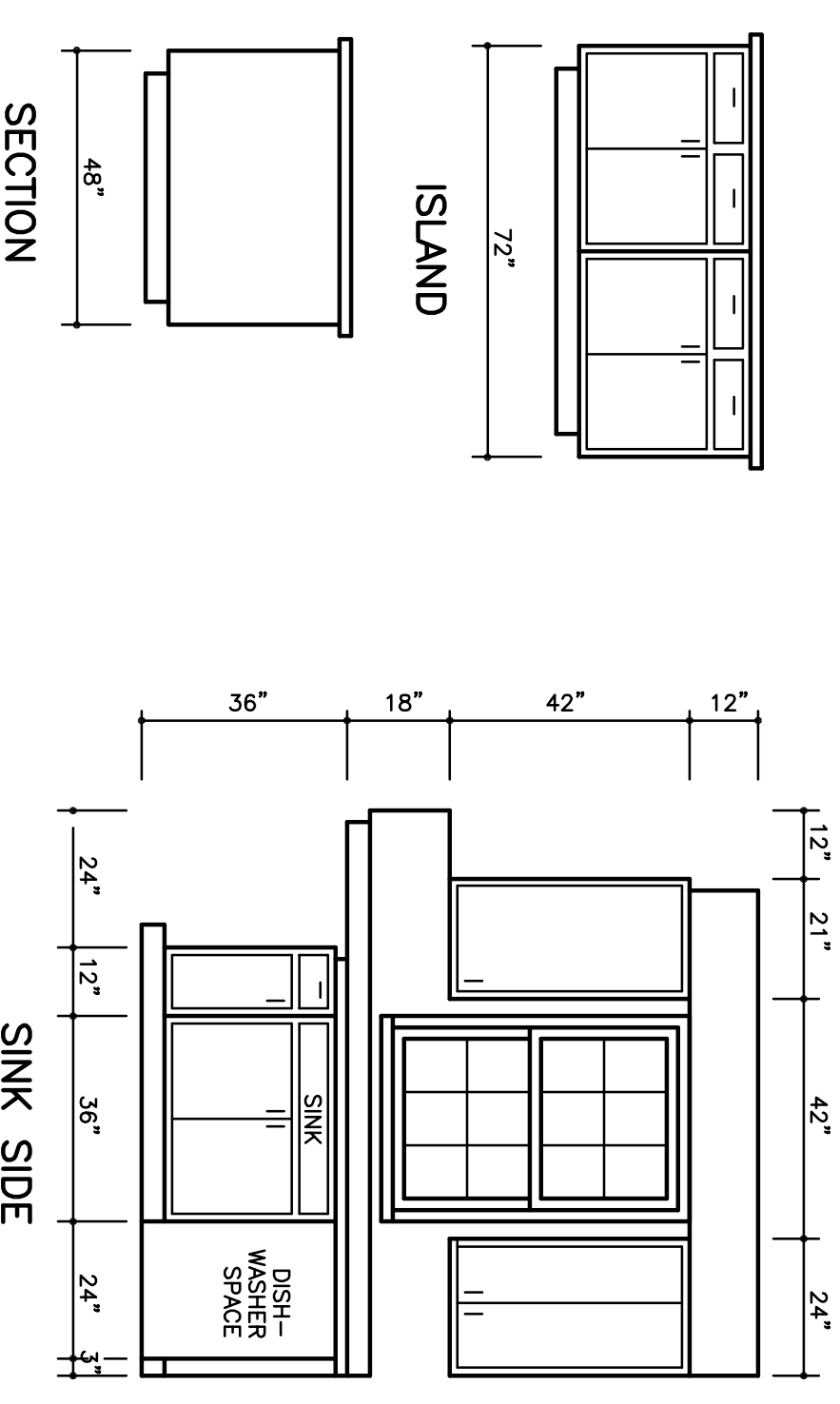
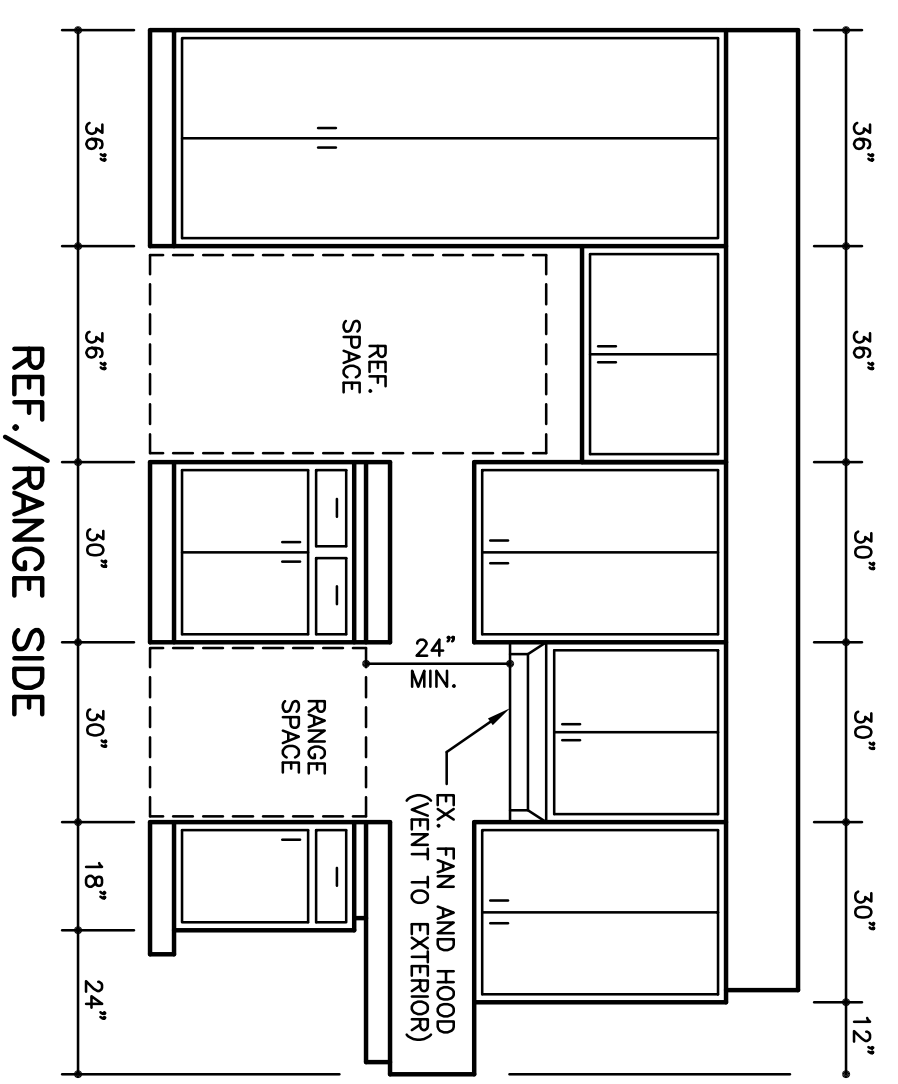
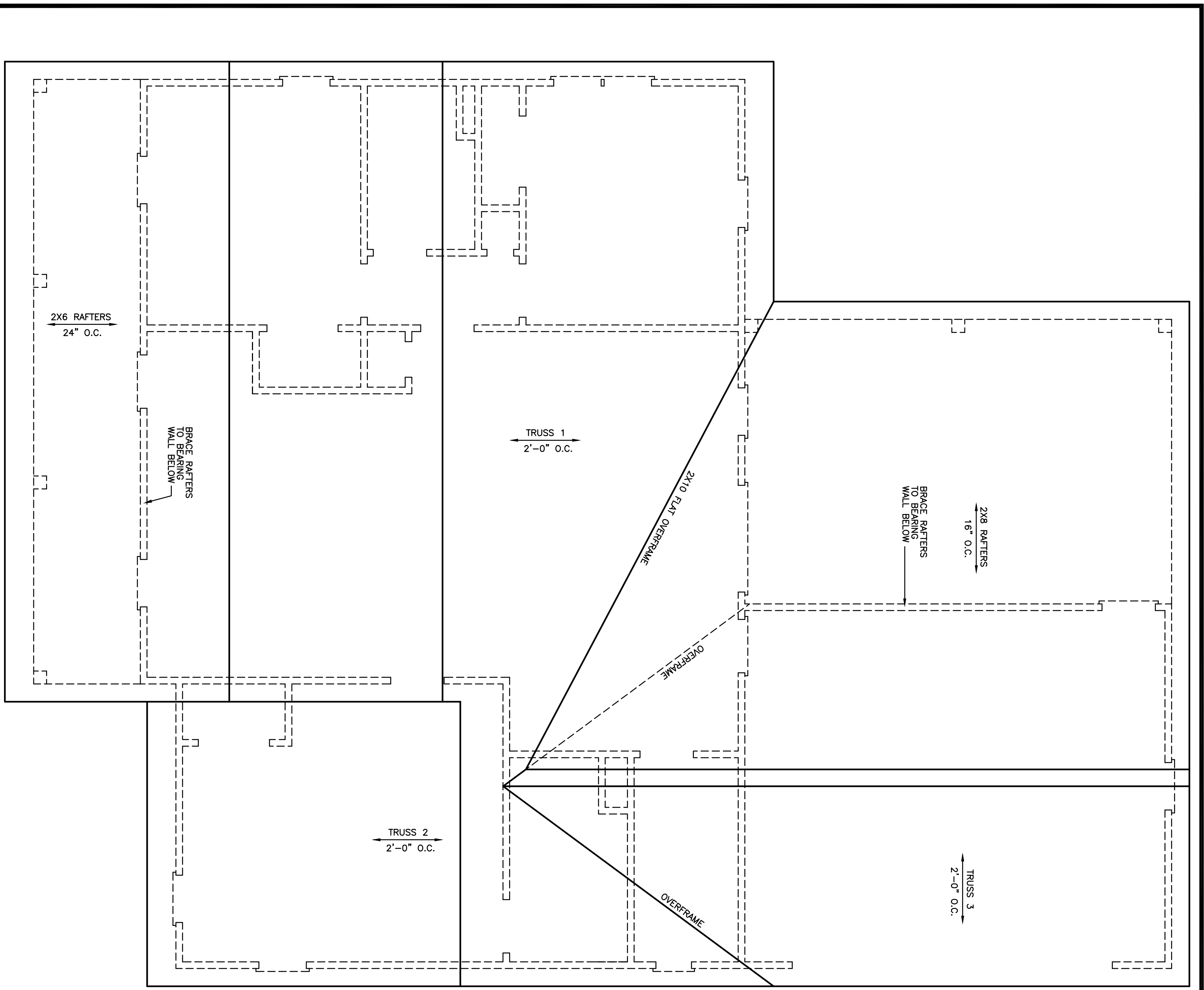
HEATED AREA: 1668 SQ. FT. IN SIDING  
 PORCH: 206 SQ. FT.  
 PATIO: 496 SQ. FT.  
 9 FT. CEILING (TYPICAL-U.O.N.)

MARJORIE MIXEN  
 156 FLETCHER RD.  
 FLOQUAY VARIANA, N.C. 27526

REVISED 04-11-22  
 FLOATING SLAB  
 TRUSS CONSTRUCTION

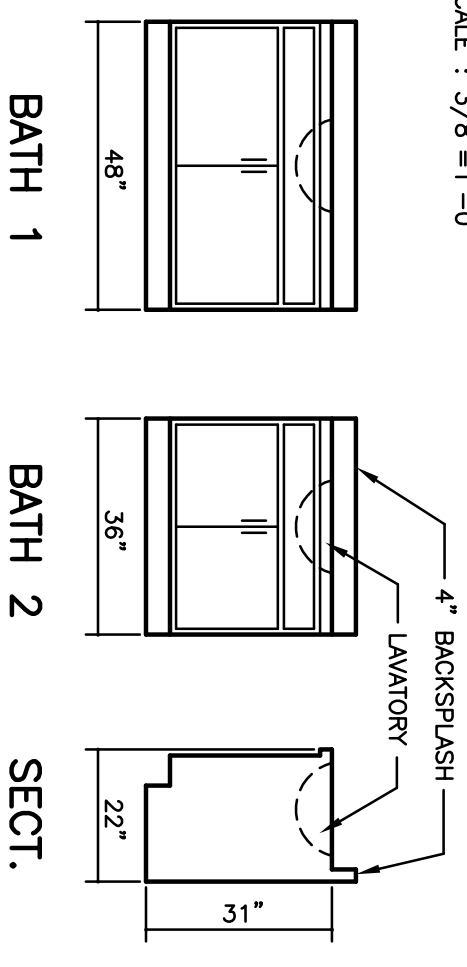
**Standard Homes Plan Service, Inc.**  
 7200 SUNSET LAKE ROAD FLOQUAY-VARIANA, N.C. 27526 (919)552-5677

DESIGNED FOR	MARJORIE MIXEN	SHEET	3 OF 8
PLAN	JERICHO	NO.	6J
		MATERIAL	F.R.M. SID.
			INC.



SECTION

VANITY DETAILS  
SCALE : 3/8"=1'-0"



ROOF PLAN  
SCALE : 1/4"=1'-0"

ATTIC VENTILATION REQUIREMENTS:  
2748 SQ. FT. ± 150 = 18.3 SQ. FT. NET  
FREE AREA REQUIRED

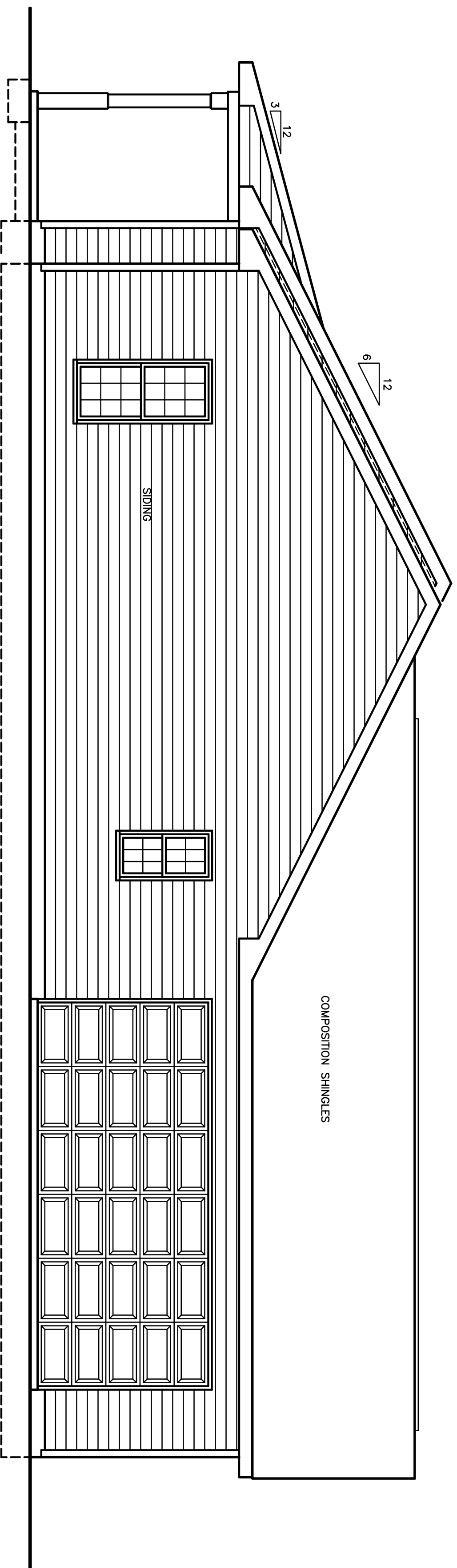
MARJORIE MIXEN  
158 FLETCHER RD  
FUQUAY VARIANA, NC, 27526

REVISED: 04-11-22  
FLOATING SLAB  
TRUSS CONSTRUCTION

**Standard Homes Plan Service, Inc.**  
7200 SUNSET LAKE ROAD FUQUAY-VARINA, NC 27526 (919)552-5677

DESIGNED FOR	MARJORIE MIXEN	NO.	6J	MATERIAL	SID.	SHOWN	SHEET	4 OF 8
PLAN	JERICO						F.R.M.	

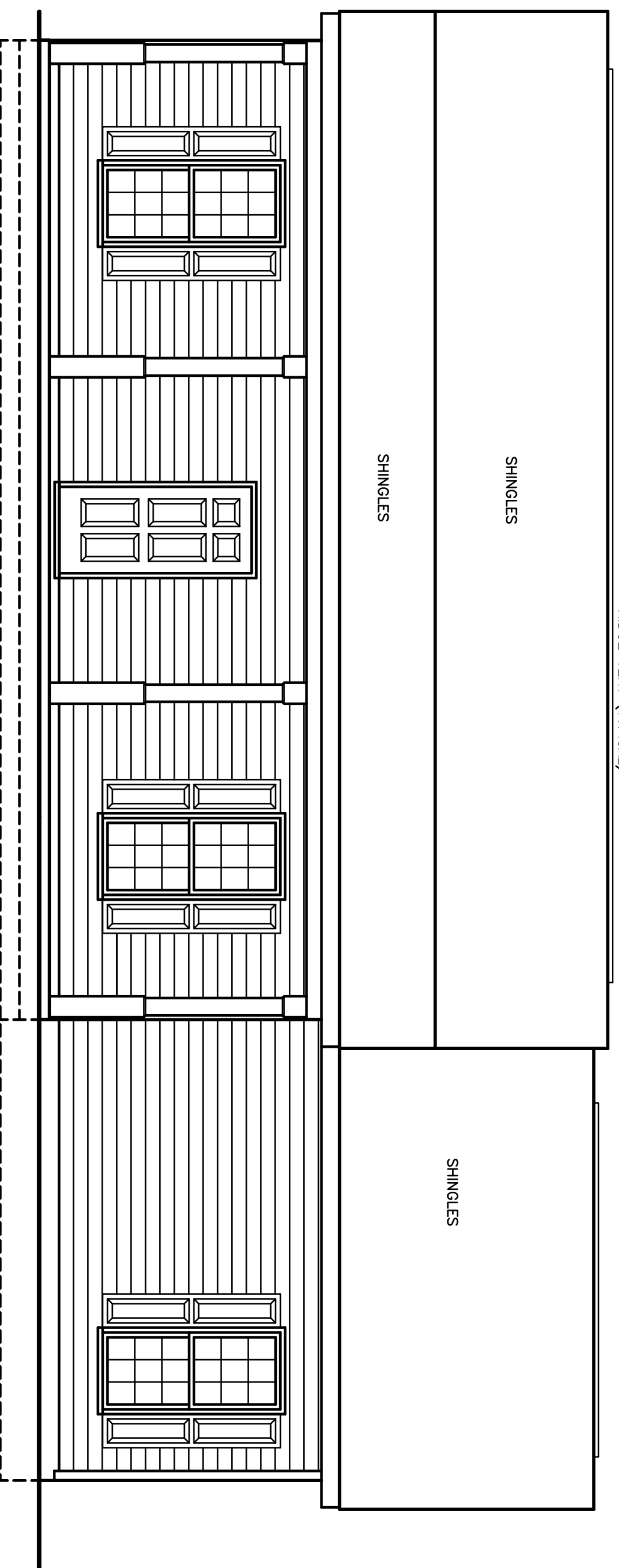
**KITCHEN CABINET ELEVATIONS**  
SCALE : 3/8"=1'-0"  
FOR SECTION THRU CABINETS,  
SEE DETAIL ON COVER SHEET.



**RIGHT SIDE ELEVATION**

SCALE : 1/4"=1'-0"

PROVIDE GUTTERS, DOWNSPOUTS AND SPLASHPADS  
ACCORDING TO LOCAL CODE AND RAINFALL CONDITIONS.  
ALL SPLASHPADS SHALL CARRY WATER 60"  
FROM BUILDING.

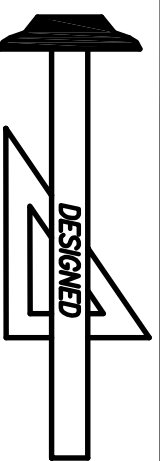


**FRONT ELEVATION**

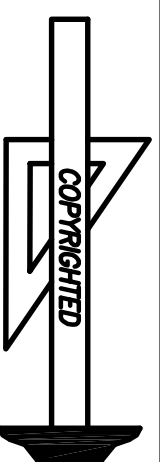
SCALE : 1/4"=1'-0"

MARJORIE MIXEN  
156 FLETCHER RD.  
FUQUAY VARIANA, NC, 27526

REVISED 04-11-22  
FLOATING SLAB  
TRUSS CONSTRUCTION



**Standard Homes Plan Service, Inc.**  
7200 SUNSET LAKE ROAD FUQUAY-VARINA, NC 27526



DESIGNED FOR  
MARJORIE MIXEN

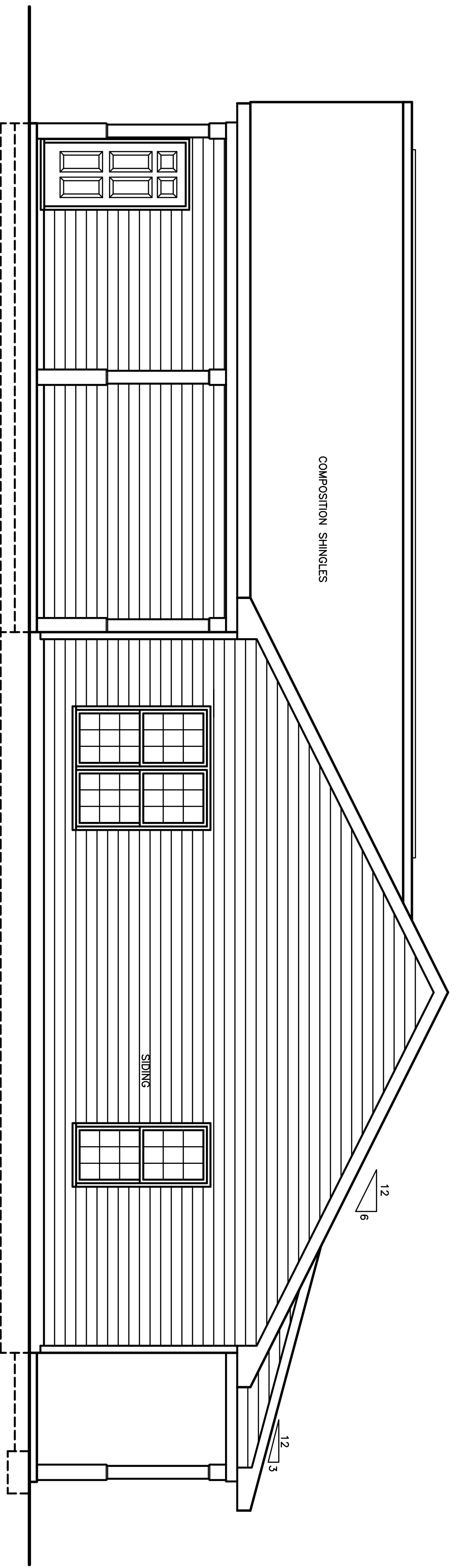
PLAN  
JERICHO

NO.  
6J

MAT'L  
SID.

SHOWN

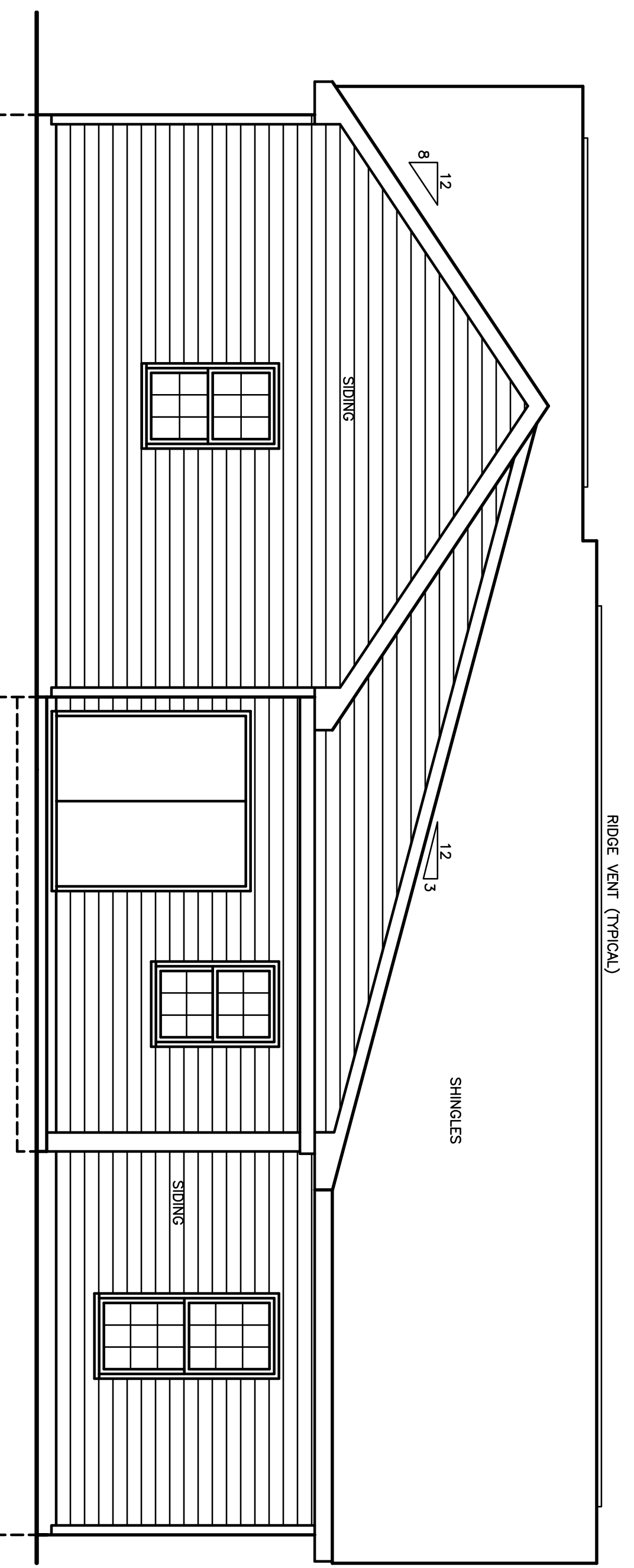
SHEET  
5 OF 8  
F.R.M.  
INC.



**LEFT SIDE ELEVATION**

SCALE : 1/4"=1'-0"

NOTE : INSTALL (2) LAYERS OF UNDERLAYMENT FOR ALL ROOFS WITH SLOPE OF 3:12 OR LESS.

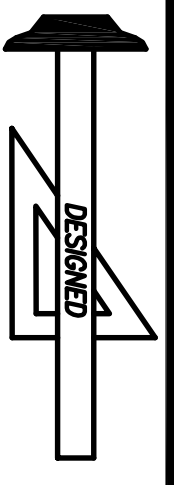


**REAR ELEVATION**

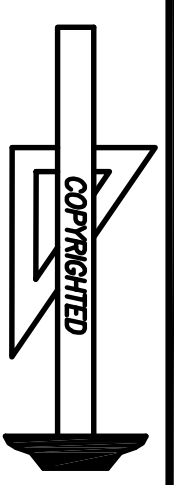
SCALE : 1/4"=1'-0"

MARJORIE MIXEN  
156 FLETCHER RD.  
FUQUAY VARIANA, NC, 27526

REVISED 04-11-22  
FLOATING SLAB  
TRUSS CONSTRUCTION



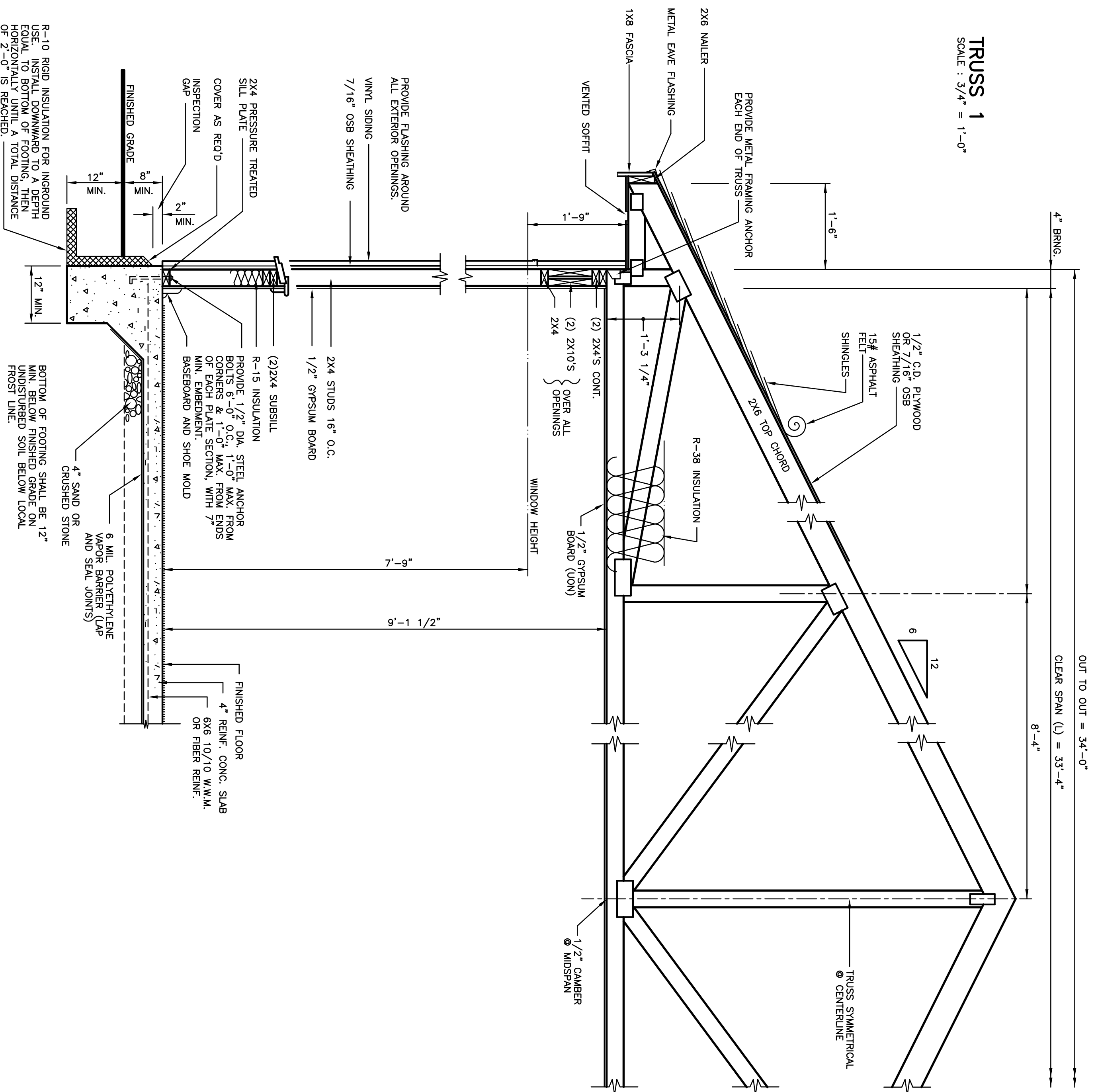
**Standard Homes Plan Service, Inc.**  
7200 SUNSET LAKE ROAD FUQUAY-VARINA, NC 27526 (919)552-5677



DESIGNED FOR	PLAN	NO.	MAT'L	SHOWN	SHEET
MARJORIE MIXEN	JERICHO	6J	SID.		6 OF 8 F.R.M. INC.

# TRUSS 1

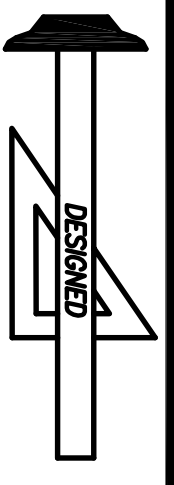
SCALE : 3/4" = 1'-0"



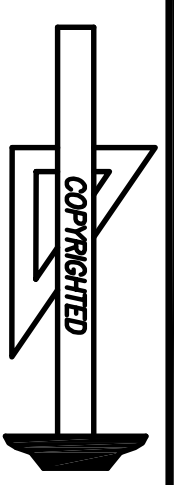
701 TYPICAL WALL SECTION  
SCALE 3/4"=1'-0"

## TRUSS GENERAL NOTES

1. ALL TRUSSES SHALL BE FACTORY BUILT TO MEET THE REQUIREMENTS OF LOCAL CODES, CLIMATIC CONDITIONS, AND AGENCIES INVOLVED.
2. **LUMBER:** ALL LUMBER TO BE STRESS GRADED AND SO MARKED, AND SHALL BE OF A DIMENSION TO CARRY ALL DESIGN LOADS SAFELY ACCORDING TO SOUND ENGINEERING PRACTICE.
3. **CONNECTIONS:** SAFE WORKING LOAD SHALL BE DETERMINED BY TRUSS MANUFACTURER.
4. **DESIGN:** MANUFACTURER SHALL PROVIDE A TRUSS IN WHICH THE ALLOWABLE WORKING STRESSES HAVE BEEN INCREASED 33% FOR SHORT TIME LOADING CONDITIONS.
5. **CONNECTION PLATES** SHALL BE 20 GAUGE (MIN.) GALVANIZED STEEL, OF SUCH DESIGN AND SIZE TO PROVIDE A POSITIVE JOINT CONNECTION BETWEEN TWO OR MORE MEMBERS, AND TO SAFELY CARRY ANY COMBINED LOADS IMPOSED ON SAID JOINT. (TRUSS PLATES SHALL BE APPLIED ON BOTH SIDES OF JOINT.)
6. **FABRICATION:** ALL JOINTS SHALL BE ACCURATELY CUT FOR TRUE, FULL BEARING AND HELD FIRMLY IN PLACE UNTIL CONNECTION PLATE TEETH ARE IMBEDDED IN WOOD.  
KNOTTY WOOD WHICH WOULD REDUCE DESIGN CAPACITY, WILL NOT BE USED.  
TOP AND BOTTOM CHORD SHALL BE STRAIGHT AND TRUE-TO-LINE WITH A MINIMUM OF TWIST OR WARP.  
TOP AND BOTTOM CHORD SPLICES (WHEN REQUIRED) SHALL BE DESIGNED TO CARRY ALL LOADS IMPOSED AT SPLICE. TOP CHORD AND BOTTOM CHORD SPLICES SHALL NOT FALL IN SAME PANEL.
7. **NAILS** WHEN USED TO TEMPORARILY ALIGN PLATES PRIOR TO IMBEDMENT, SHALL BE 1 1/2" x 11" GAUGE "SCOTCH" NAILS OR EQUIVALENT.
8. **LOADS:** TOP CHORD D.L. & L.L. = 30 P.S.F.  
BOTTOM CHORD D.L. = 10 P.S.F.  
TOTAL LOAD = 40 P.S.F.  
LOADS SHOWN ARE AVERAGE. INCREASE OR DECREASE LOADS TO SUIT LOCAL CODES AND SOUND ENGINEERING PRACTICE.
9. **SPACING:** TRUSSES SHALL BE SPACED 2'-0" O.C. UNLESS OTHERWISE INDICATED.
10. **CEILING INSTALLATION :** INSTALL 1/2" GYPSUM BOARD PERPENDICULAR TO TRUSS DIRECTION. INSTALL 5/8" GYPSUM BOARD PERPENDICULAR TO TRUSS DIRECTION WHEN APPLYING WATER-BASED TEXTURED CEILING FINISH.



Standard Homes Plan Service, Inc.  
7200 SUNSET LAKE ROAD FUQUAY-VARINA, NC 27526 (919)552-5677



DESIGNED FOR MARJORIE MIXEN  
156 FLETCHER RD  
FUQUAY VARINA, NC, 27526

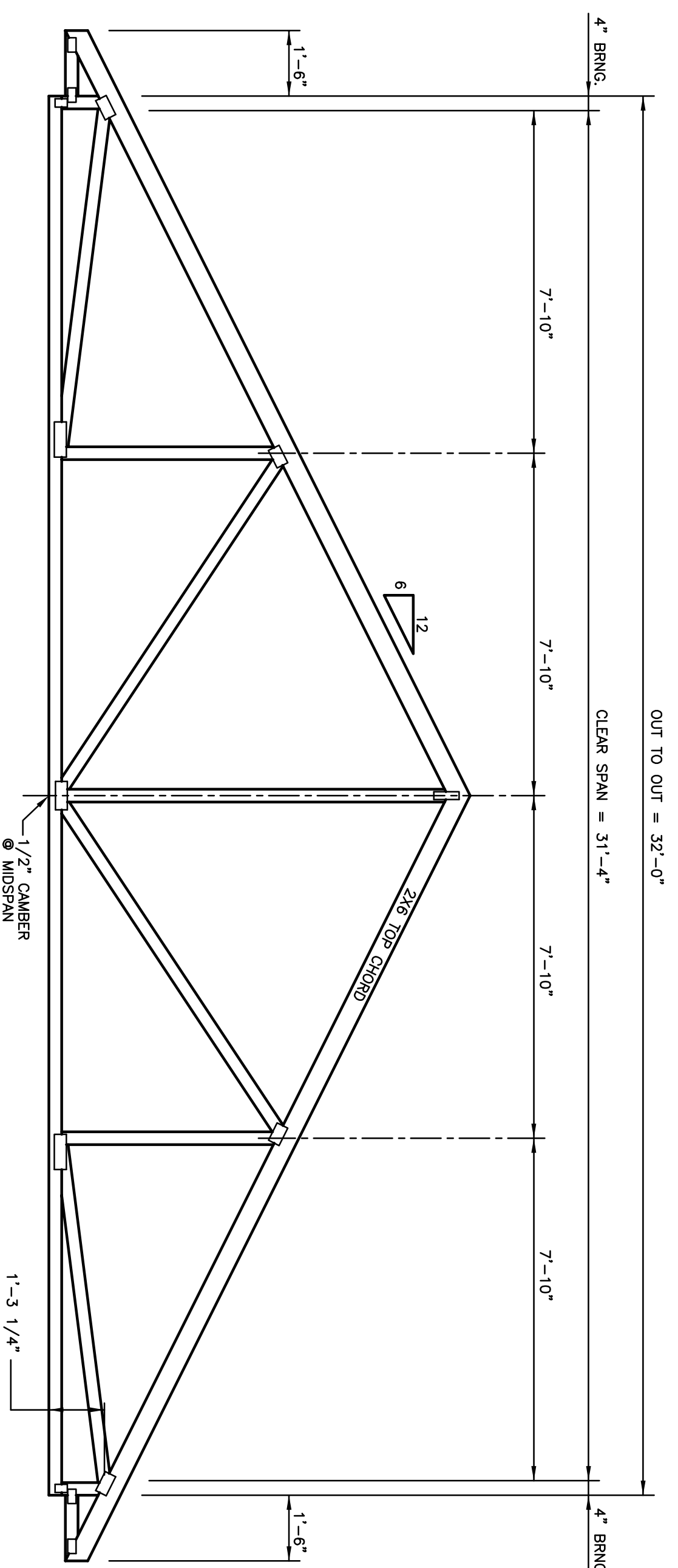
DESIGNED FOR	PLAN	NO.	MAT'L	SHOWN	SHEET
MARJORIE MIXEN	JERICHO	6J	SID.		7 OF 8 F.R.M. INC.

REVISED 04-11-22  
FLOATING SLAB  
TRUSS CONSTRUCTION

**TRUSS GENERAL NOTES**

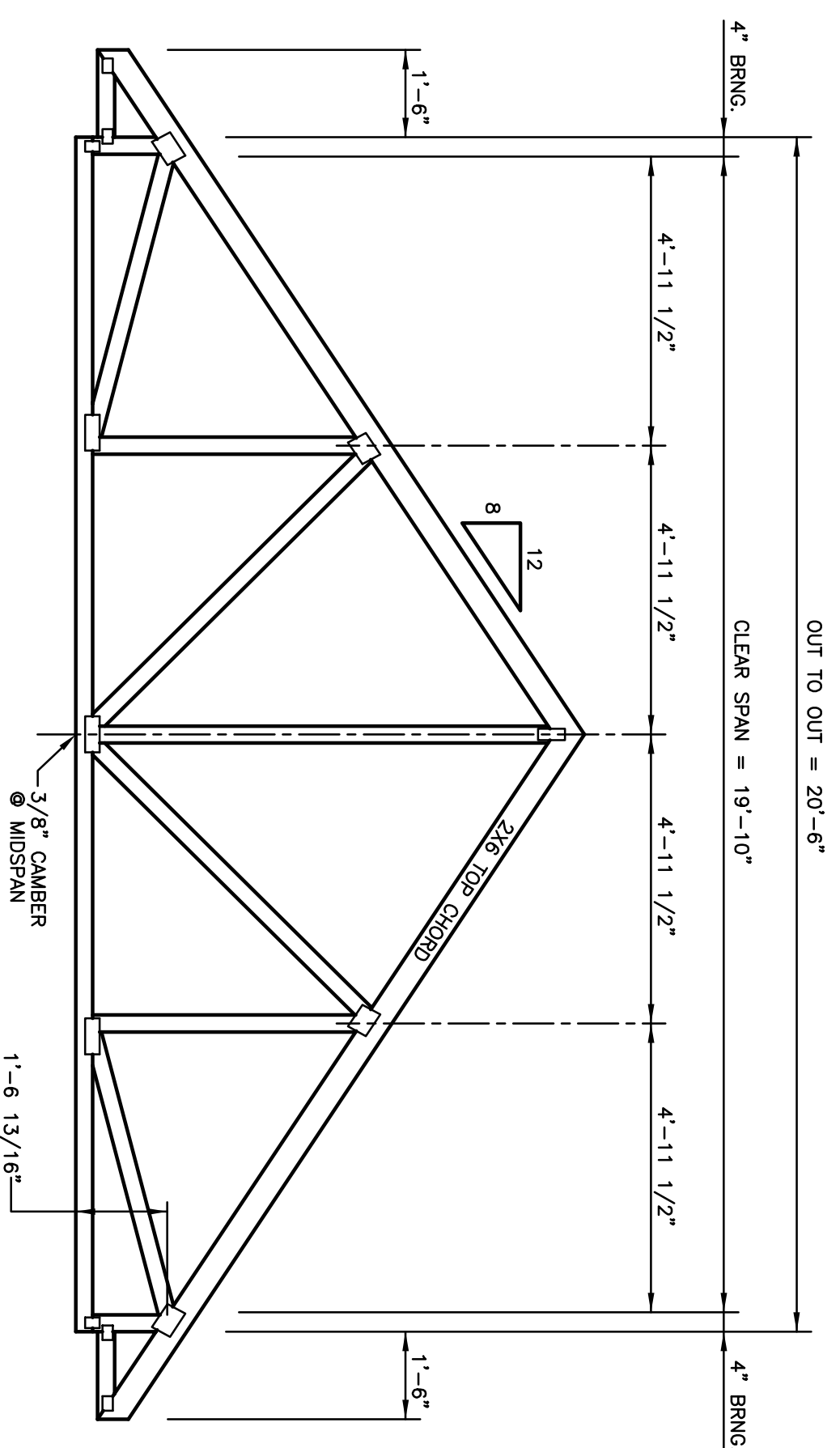
1. ALL TRUSSES SHALL BE FACTORY BUILT TO MEET THE REQUIREMENTS OF LOCAL CODES, CLIMATIC CONDITIONS, AND AGENCIES INVOLVED.
2. **LUMBER:** ALL LUMBER TO BE STRESS GRADED AND SO MARKED, AND SHALL BE OF A DIMENSION TO CARRY ALL DESIGN LOADS SAFELY ACCORDING TO SOUND ENGINEERING PRACTICE.
3. **CONNECTIONS:** SAFE WORKING LOAD SHALL BE DETERMINED BY TRUSS MANUFACTURER.
4. **DESIGN:** MANUFACTURER SHALL PROVIDE A TRUSS IN WHICH THE ALLOWABLE WORKING STRESSES HAVE BEEN INCREASED 33% FOR SHORT TIME LOADING CONDITIONS.
5. **CONNECTION PLATES** SHALL BE 20 GAUGE (MIN.) GALVANIZED STEEL, OF SUCH DESIGN AND SIZE TO PROVIDE A POSITIVE JOINT CONNECTION BETWEEN TWO OR MORE MEMBERS, AND TO SAFELY CARRY ANY COMBINED LOADS IMPOSED ON SAID JOINT. (TRUSS PLATES SHALL BE APPLIED ON BOTH SIDES OF JOINT.)
6. **FABRICATION:** ALL JOINTS SHALL BE ACCURATELY CUT FOR TRUE, FULL BEARING AND HELD FIRMLY IN PLACE UNTIL CONNECTION PLATE TEETH ARE IMBEDDED IN WOOD.  
KNOTTY WOOD WHICH WOULD REDUCE DESIGN CAPACITY, WILL NOT BE USED.  
TOP AND BOTTOM CHORD SHALL BE STRAIGHT AND TRUE-TO-LINE WITH A MINIMUM OF TWIST OR WARP.  
TOP AND BOTTOM CHORD SPLICES (WHEN REQUIRED) SHALL BE DESIGNED TO CARRY ALL LOADS IMPOSED AT SPLICE. TOP CHORD AND BOTTOM CHORD SPLICES SHALL NOT FALL IN SAME PANEL.
7. **NAILS** WHEN USED TO TEMPORARILY ALIGN PLATES PRIOR TO IMBEDMENT, SHALL BE 1 1/2" X 11" GAUGE "SCOTCH" NAILS OR EQUIVALENT.
8. **LOADS:** TOP CHORD D.L. & L.L. = 30 P.S.F.  
BOTTOM CHORD D.L. = 10 P.S.F.  
  
TOTAL LOAD = 40 P.S.F.  
LOADS SHOWN ARE AVERAGE. INCREASE OR DECREASE LOADS TO SUIT LOCAL CODES AND SOUND ENGINEERING PRACTICE.
9. **SPACING:** TRUSSES SHALL BE SPACED 2'-0" O.C. UNLESS OTHERWISE INDICATED.
10. **CEILING INSTALLATION :** INSTALL 1/2" GYPSUM BOARD PERPENDICULAR TO TRUSS DIRECTION. INSTALL 5/8" GYPSUM BOARD PERPENDICULAR TO TRUSS DIRECTION WHEN APPLYING WATER-BASED TEXTURED CEILING FINISH.

**TRUSS 2**  
SCALE 3/8" = 1'-0"



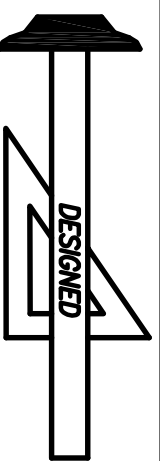
**TRUSS 3**  
SCALE 3/8" = 1'-0"

TRUSS MANUFACTURER SHALL PROVIDE VALLEY SETS AS REQUIRED.

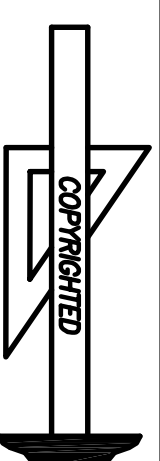


MARJORIE MIXEN  
156 FLETCHER RD  
FUQUAY VARIANA, NC, 27526

REVISED 04-11-22  
FLOATING SLAB  
TRUSS CONSTRUCTION



**Standard Homes Plan Service, Inc.**  
7200 SUNSET LAKE ROAD FUQUAY-VARINA, NC 27526 (919)552-5677



DESIGNED FOR  
MARJORIE MIXEN

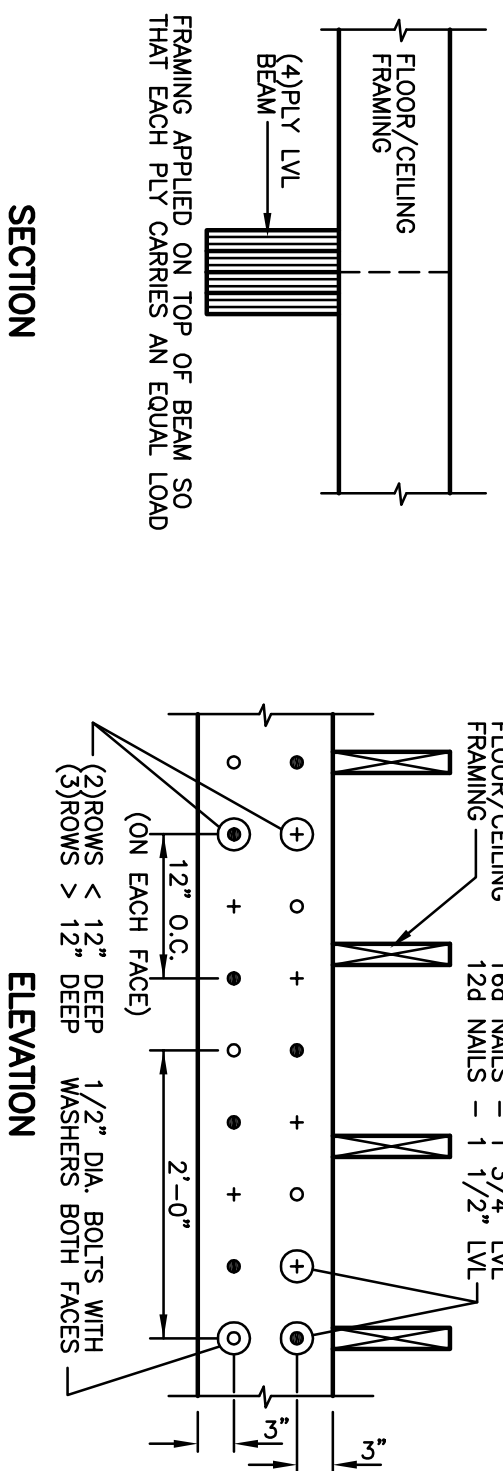
PLAN  
JERICHO

NO. 6J  
SID.

SHEET 8 OF 8  
F.R.M.  
INC.



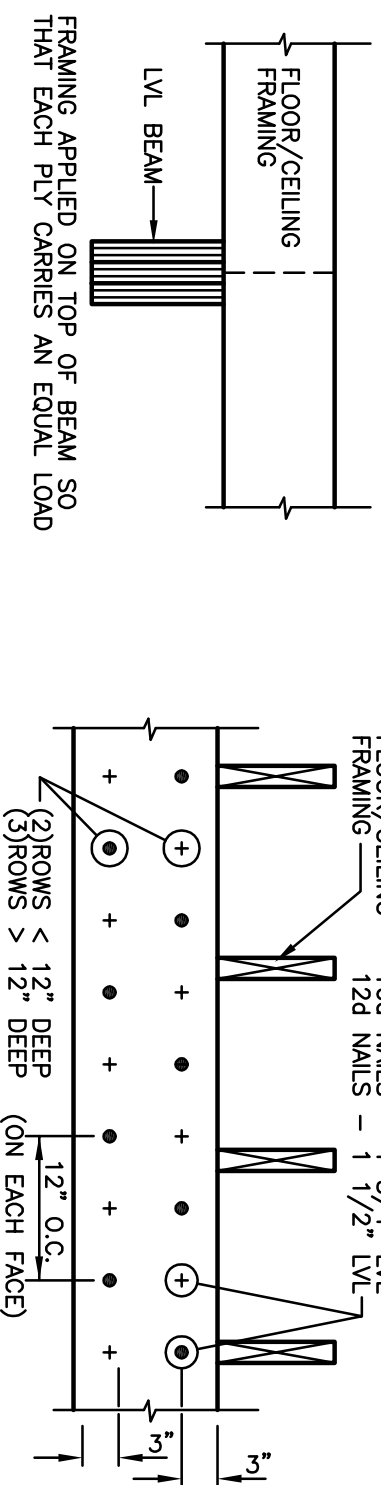
**CONNECTION OF MULTIPLE PLY BEAMS**  
(INSTALLATION & CONNECTION OF BEAMS SHALL BE ACCORDING TO MANUFACTURERS SPECIFICATIONS)



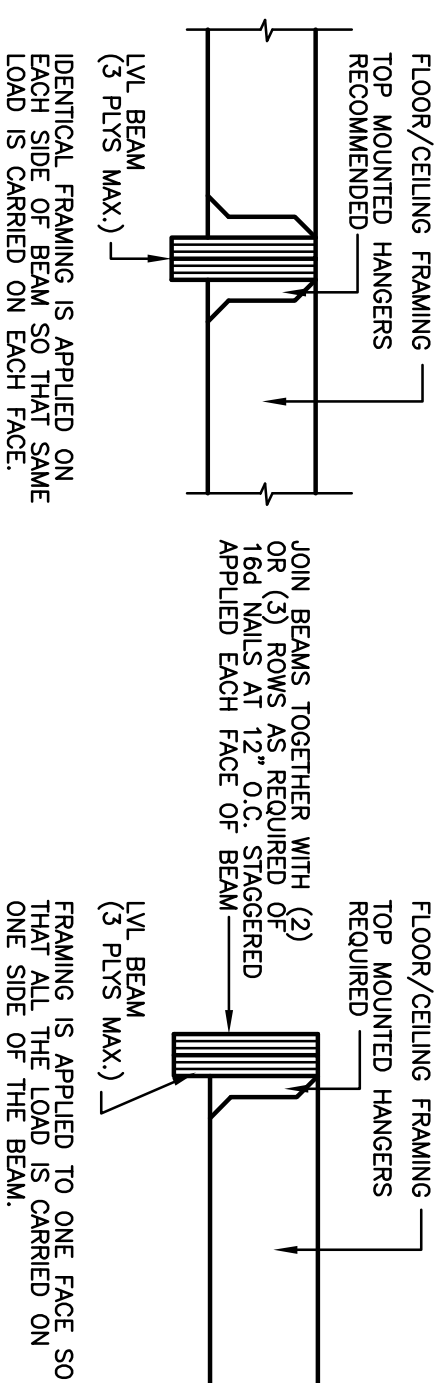
MINIMUM UNIFORMLY DISTRIBUTED LIVE LOADS (PSF)	
USE	LIVE LOAD
UNINHABITABLE ATTICS WITHOUT STORAGE	10
UNINHABITABLE ATTICS WITH LIMITED STORAGE	20
HABITABLE ATTICS AND ATTICS SERVED WITH FIXED STAIRS	30
BALCONIES AND DECKS	40
ROOMS OTHER THAN SLEEPING ROOMS	40
SLEEPING ROOMS	30
STAIRS	40

ALLOWABLE DEFLECTION OF STRUCTURAL MEMBERS	
(NOTE : L = SPAN LENGTH)	
STRUCTURAL MEMBER	ALLOWABLE DEFLECTION
RAFTERS HAVING SLOPES GREATER THAN 3:12 WITH FINISHED CEILING NOT ATTACHED TO RAFTERS	L/180
FLOORS	L/360
CEILING WITH BRITTLE FINISHES (INCLUDING PLASTER AND STUCCO)	L/360
CEILING WITH FLEXIBLE FINISHES (INCLUDING GYPSUM BOARD)	L/240
ALL OTHER STRUCTURAL MEMBERS	L/240
LINTELS SUPPORTING MASONRY VENEER WALLS	L/600

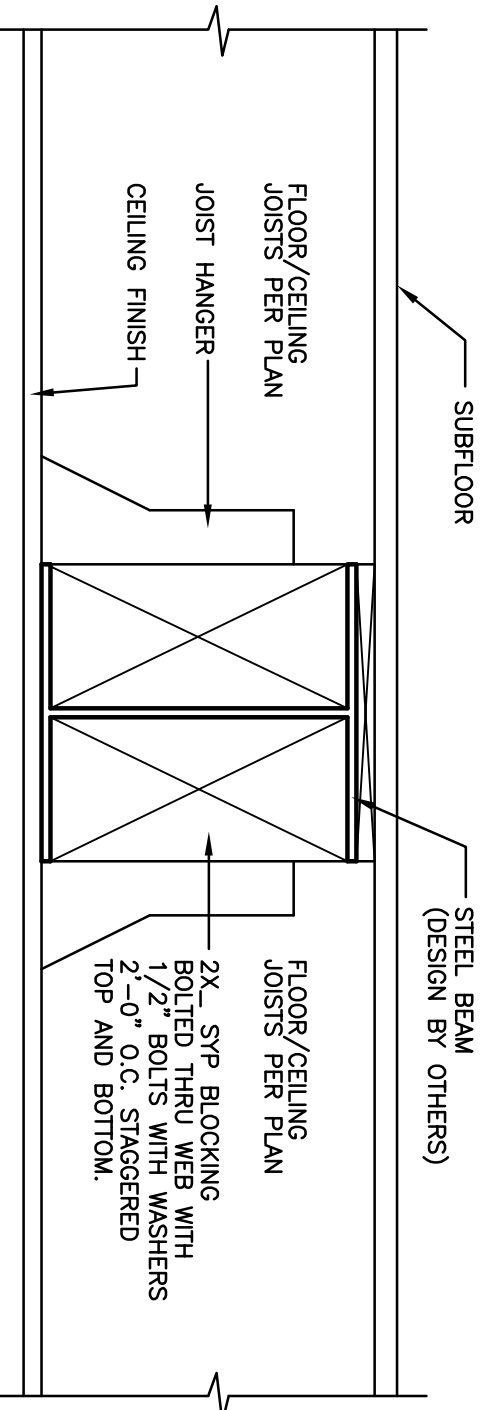
**D001 TOP LOADED (4 PILES)**



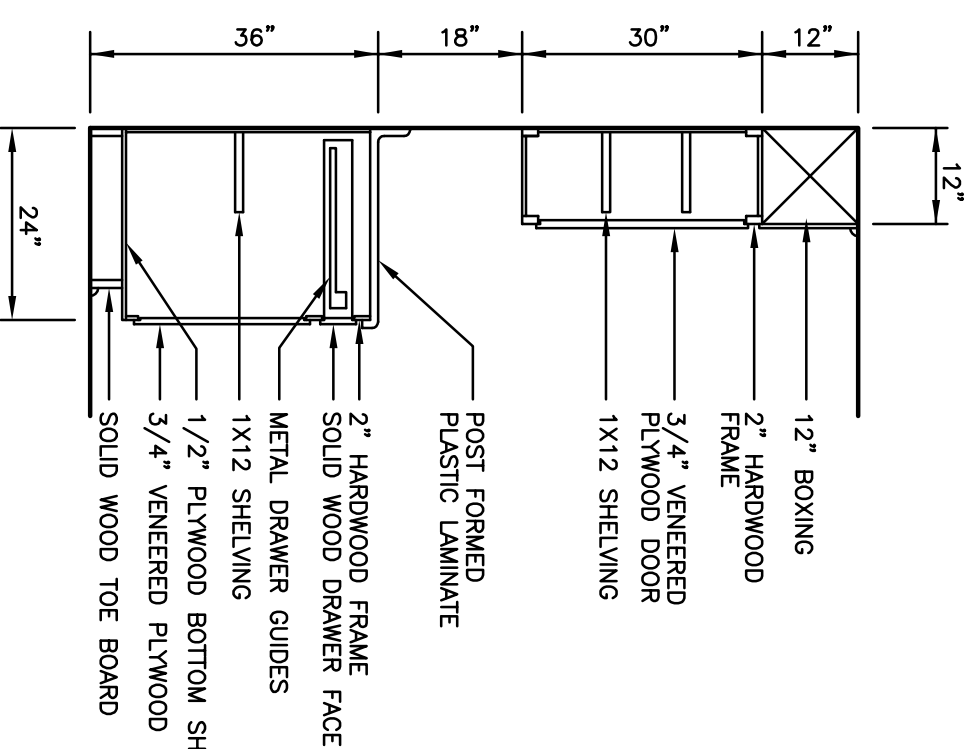
**D002 TOP LOADED (3 PILES MAXIMUM)**



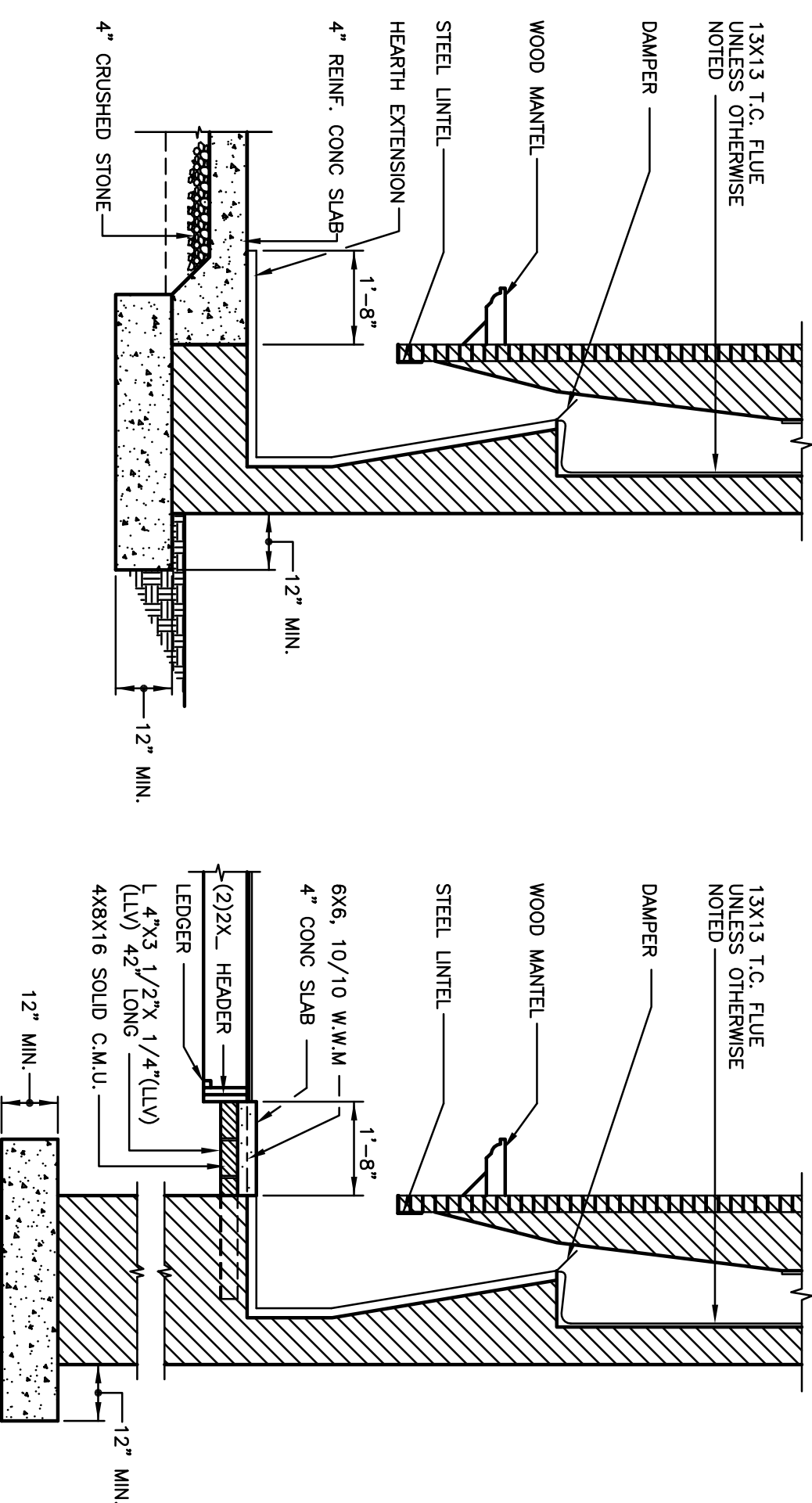
**D003 SIDE LOADED**



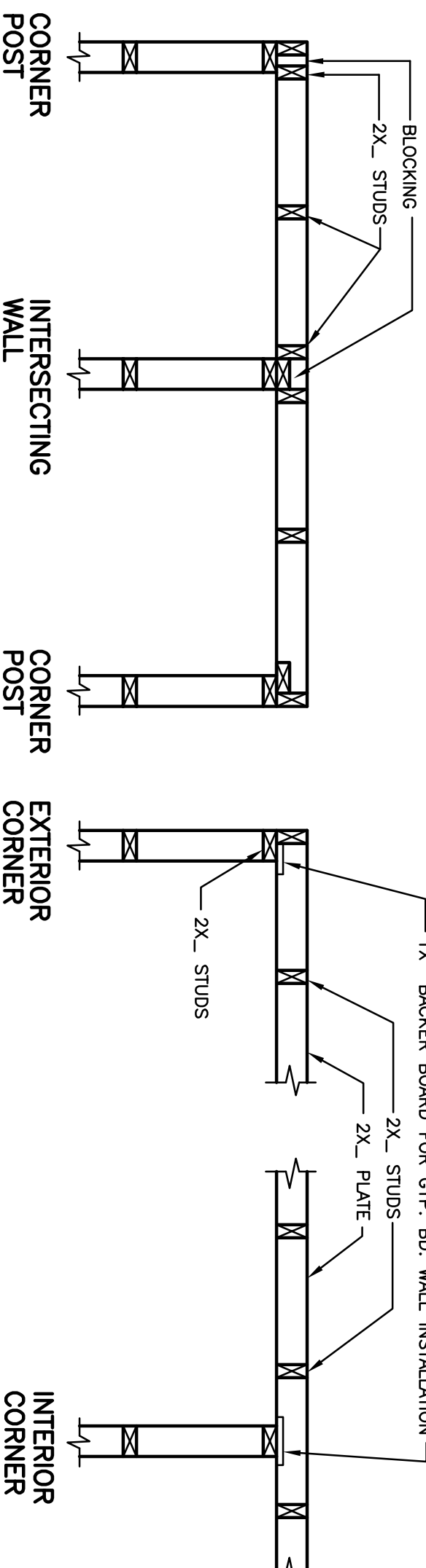
**D004 SECTION THRU STEEL BEAM**



**D005 SECTION THRU KITCHEN CABINETS**



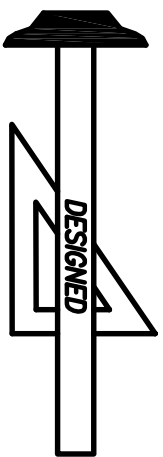
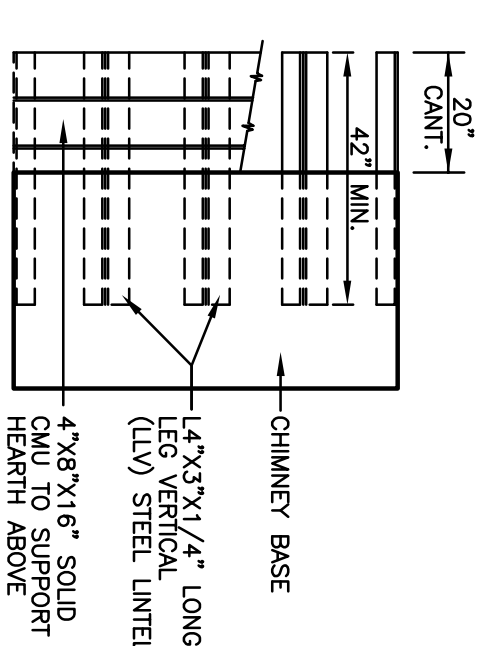
**D006 SECT. THRU FIREPLACE ON WOOD FLOOR**



**D007 CORNER POST INTERSECTING WALL**

**D008 CORNER POST EXTERIOR CORNER INTERIOR CORNER**

**PLAN VIEW OF SUSPENDED HEARTH**



**Standard Homes Plan Service, Inc.**

7200 SUNSET LAKE ROAD FLOUAY-VARINA, NC 27526

(919)552-5677



STANDARD CONSTRUCTION DETAILS

D