

ENGINEERED WOOD MATERIAL LIST

HERRING HOMES
HAYES
2ND FLOOR I-JOIST PLACEMENT PLAN

MARK	QTY	CUT LENGTH	DESCRIPTION
4	5	4'-0"	2 3/4" x 16" BCI 6000
5	1	5'-0"	2 3/4" x 16" BCI 6000
6	7	8'-0"	2 3/4" x 16" BCI 6000
12	1	12'-0"	2 3/4" x 16" BCI 6000
17	4	17'-0"	2 3/4" x 16" BCI 6000
20	23	20'-0"	2 3/4" x 16" BCI 6000
21	2	21'-0"	2 3/4" x 16" BCI 6000
23	15	23'-0"	2 3/4" x 16" BCI 6000
24	10	24'-0"	2 3/4" x 16" BCI 6000 (Total 1248')

BEAMS AND HEADERS

LVL	QTY	DESCRIPTION
LVL1	1	1 3/4" x 16" LVL 2.0E (Flush)
LVL2	2	1 3/4" x 16" LVL 2.0E (Flush)
LVL3	3	1 3/4" x 16" LVL 2.0E (Flush)
LVL4	2	1 3/4" x 16" LVL 2.0E (Flush)
LVL5	2	1 3/4" x 16" LVL 2.0E (Flush)
LVL6	4	1 3/4" x 16" LVL 2.0E (Flush)
LVL7	2	1 3/4" x 16" LVL 2.0E (Flush)

ACCESSORIES & OTHER MATERIALS (Simpson Hangers)

ITEM	QTY	UNIT	DESCRIPTION
16" Rim	157	LF	1 5/8" Rim 14 pcs@12" or 10 pcs@16"
BP	18	1'-1 5/8"	16" Blocking Panel
BP	11	1'-1 3/4"	16" Blocking Panel (Total 50')
H4d	2	PCS	M1U4.75/16 Double Face Mnt Hanger
H3d	46	PCS	1U52.37/16 Single Face Mnt Hanger
BCGUIDE	1	PCS	BCI Installation Guide
BCLAYOUT	1	PCS	BCI Placement Layout

SEE MATERIAL LIST FOR DEPTH, SERIES & LENGTH

INDICATES I-JOIST
INDICATES TIMBERFRAMING MEMBER, LVL
INDICATES FLOOR-JOIST LVL
INDICATES PARALLEL PSL
INDICATES QUAD-LAY

INDICATES A SECTION FROM THE INSTALLATION GUIDE DETAIL IS ALSO SHOWN ON THIS SHEET

LOAD BEARING WALL ABOVE
SHEAR WALL ABOVE
EXTRA JOIST ABOVE
EXTRA JOIST (1) UNDER WALL
DOUBLE JOIST (2)
TRIPLE JOIST (3)
LVL BRIDGE PANEL
1 LVL OR 1 LVL WITH BOARD
CONCENTRATED POINT LOAD FROM ABOVE
WALL OR COLUMN OR OTHER LOAD FROM ABOVE

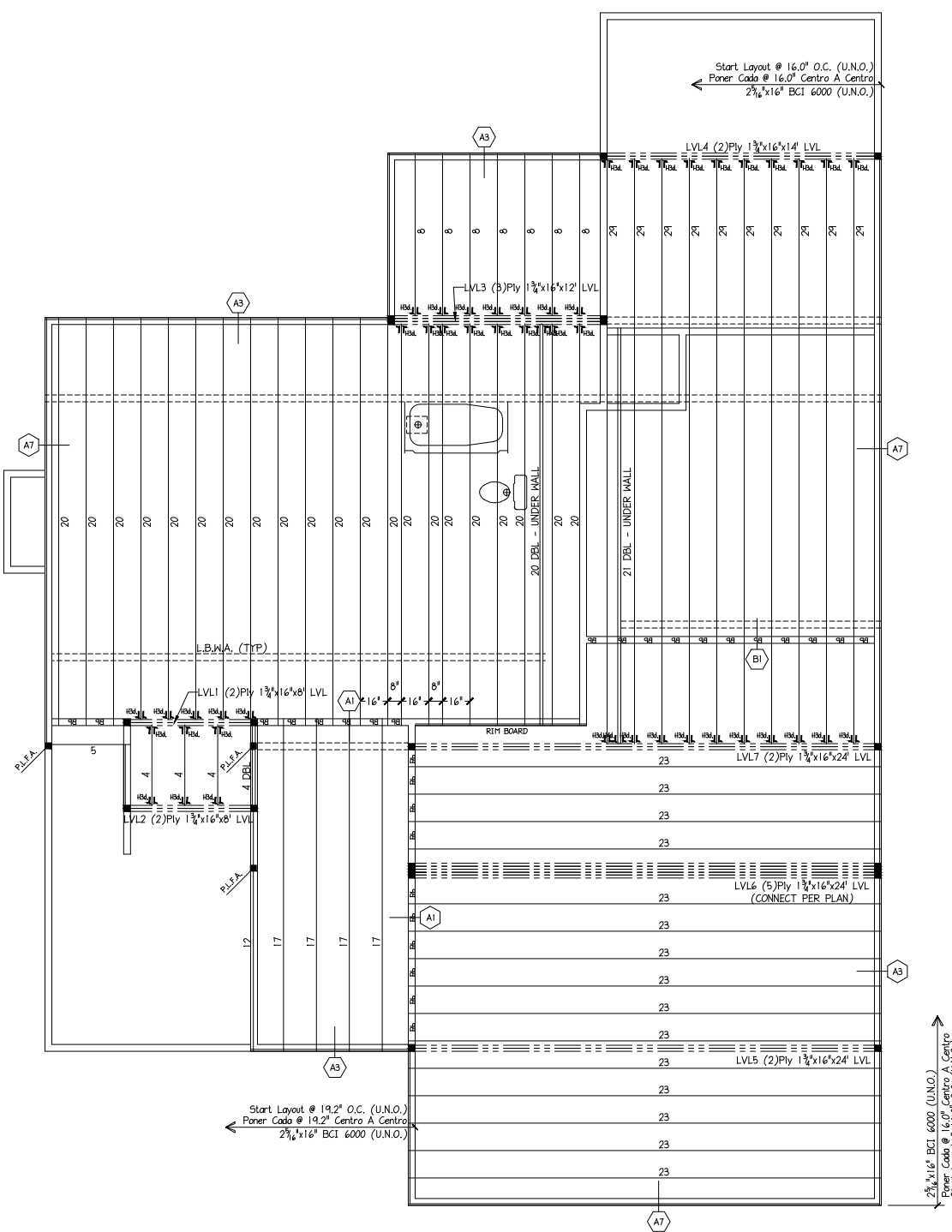
THIS SHOP DRAWING IS BASED ON THE FOLLOWING

PROJECT LOCATION :
PROJECT NUMBER :
ARCHITECT DWG# BY :
ARCHITECT REVISION :
CHECKED BY :
STRUCTURAL REVIEWER BY :
DATE :

REV BY DATE / DESC.
SD ET 7/22/22

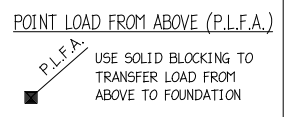
DESIGN DATA
LIVE 40 PSF
DEAD 10 PSF
TOTAL LOAD = 50 PSF
STRESS DURATION = 100%
DEFLECTION CRITERIA = (L/480)

Builders FirstSource
1800 MANUFACTURER INSTALLATION GUIDE BECOME FAMILIAR. (CONSULTANT APPROVED GUIDE USE ONLY)
THIS DRAWING IS THE PROPERTY OF BUILDERS FIRSTSOURCE. IT IS TO BE USED ONLY FOR THE PROJECT AND LOCATION SPECIFICALLY IDENTIFIED HEREON. IT IS NOT TO BE REPRODUCED, COPIED, REPRODUCED, OR TRANSMITTED IN ANY FORM OR BY ANY MEANS, ELECTRONIC OR MECHANICAL, INCLUDING PHOTOCOPYING, RECORDING, OR BY ANY INFORMATION STORAGE AND RETRIEVAL SYSTEM, WITHOUT THE WRITTEN PERMISSION OF BUILDERS FIRSTSOURCE.
THESE QUANTITIES AND DESCRIPTIONS ARE BASED ON THE ASSUMPTIONS AND CONDITIONS SET FORTH IN THE INSTALLATION GUIDE AND THE MANUFACTURER'S LITERATURE. THE CONTRACTOR SHALL BE RESPONSIBLE FOR VERIFYING THE QUANTITIES AND CONDITIONS SET FORTH IN THE INSTALLATION GUIDE AND THE MANUFACTURER'S LITERATURE.
FOR FURTHER INFORMATION, CONTACT THE MANUFACTURER'S REPRESENTATIVE.



I-Joists

12BCI4500	=	12TJ110
12BCI5000	=	12TJ210
14BCI4500	=	14TJ110
14BCI5000	=	14TJ210
14BCI6000	=	14TJ230
16BCI5000	=	16TJ210
16BCI6000	=	16TJ360



2ND FLOOR I-JOIST PLACEMENT PLAN
HERRING HOMES - HAYES

SCALE: 1/4" = 1'-0" 0 5' 10'

BUILDER: HERRING HOMES
MODEL: HAYES
2ND FLOOR I-JOIST PLACEMENT PLAN
TIME: TUESDAY, 30 AUGUST 2022 - 11:20 AM
FILE: I:\APEX\TJ\ACADDWG\HERRING - JORDAN HOMES\HAYES.DWG

DRAWN BY: TJF DATE: 2/10/20
SHEET: 1 OF 1 SHEETS