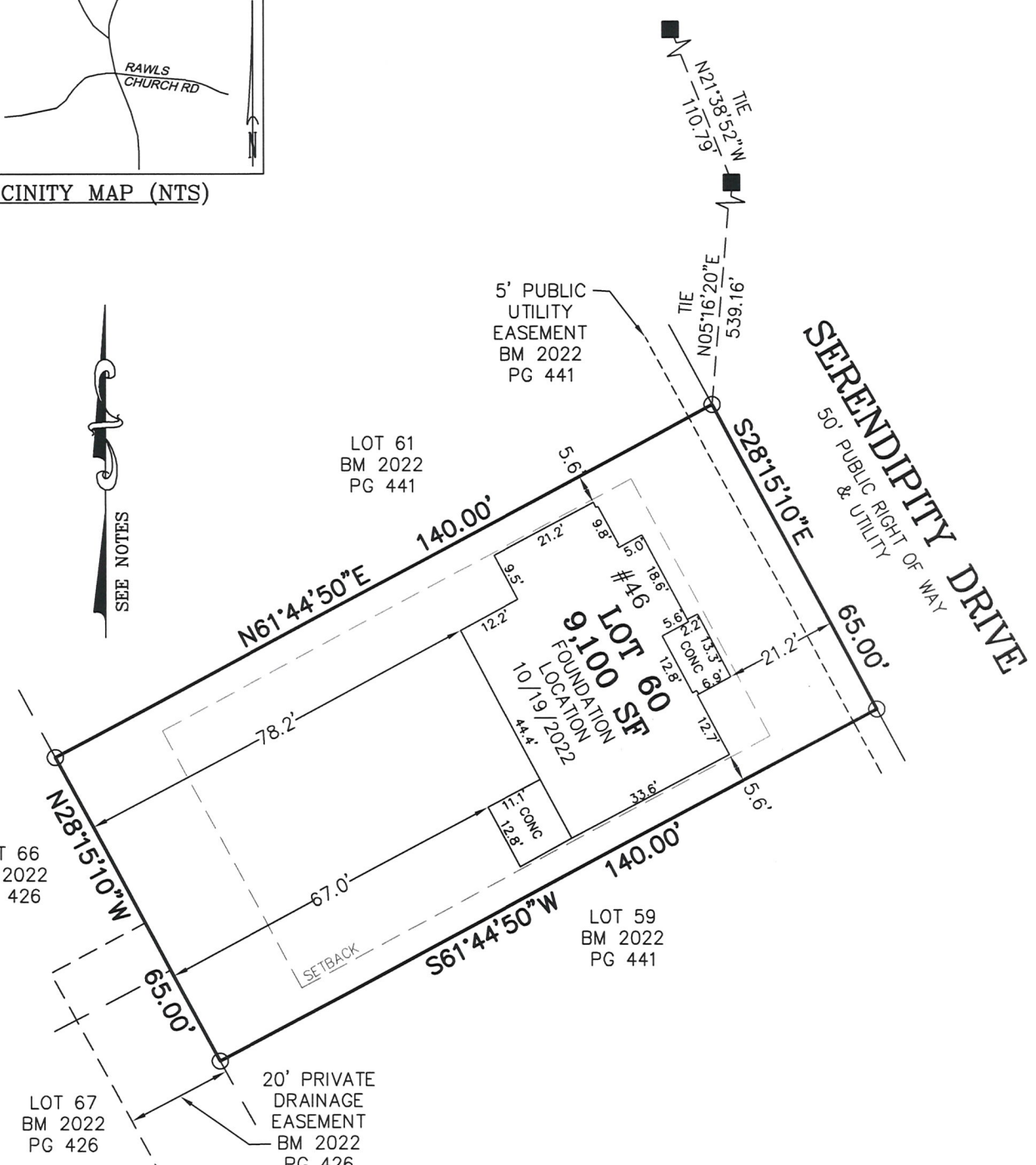


**LEGEND**

- MATHEMATICAL POINT
- CONTROL CORNER

VICINITY MAP (NTS)



**NOTES:**  
 -REFERENCE HARNETT CO. BM 2022, PG 434-448 FOR BOUNDARY INFORMATION, NORTH INDEX & TIE LINES TO SUBDIVISION CONTROL CORNERS.  
 -ZONED: RA-30, RA-40, & CONSERVATION.  
 -SETBACKS:  
 >43' LOT WIDTH:  
 FRONT YARD-20', SIDE YARD-4' & 4' OR 0' & 8', REAR YARD-20', CORNER YARD-12'.  
 >43' LOT WIDTH:  
 FRONT YARD-20', SIDE YARD-5', REAR YARD-20', CORNER YARD-12'.  
 -PROPERTY IS NOT LOCATED WITHIN A SPECIAL FLOOD HAZARD AREA AS SCALED FROM THE NFIP FIRM No. 3720065500L (EFFECTIVE DATE: JULY 19, 2022).

**FOUNDATION LOCATION LOT 60**

SERENITY SUBDIVISION, PHASE 1  
 HECTOR'S CREEK TOWNSHIP, HARNETT COUNTY, NC

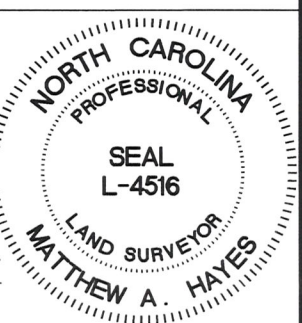
SURVEYED FOR  
**DAVID WEEKLEY HOMES**  
 1901 N. HARRISON AVENUE, SUITE 200  
 CARY, NC 27513



**MSS LAND CONSULTANTS, PC**  
 "Committed to Total Quality Service"  
 Firm License: C-2070  
 EST. 1998

6118 St. Giles St Phone (919) 510-4464  
 (Suite E) Fax (919) 510-9102  
 Raleigh, NC 27612 Email: gowersw@mssland.com

I HEREBY CERTIFY THAT THIS FOUNDATION IS CORRECT AS SHOWN AND THAT THERE ARE NO ENCROACHMENTS UNLESS OTHERWISE SHOWN. THIS IS NOT A SURVEY. THIS PLAT DOES NOT CONFORM TO GS-47-30 AS AMENDED AND IS NOT FOR RECORDATION. THE DIMENSIONS SHOWN HEREON FROM THE PROPERTY LINES TO THE FOUNDATION ARE NOT INTENDED TO MONUMENT THE PROPERTY LINES OR TO GUIDE IN THE ERECTION OF FENCES OR ANY OTHER IMPROVEMENT. THIS SURVEY WAS PREPARED FOR THE PARTIES AND PURPOSE INDICATED HEREON. ANY EXTENSION OF THE USE BEYOND THE PURPOSE AGREED TO BETWEEN THE CLIENT AND SURVEYOR EXCEEDS THE SCOPE OF ENGAGEMENT.



*Matthew A. Hayes*

MATTHEW A. HAYES, PLS L-4516

O:\\_DW\HOMES\DW-22-02\dwg\FND LOC\60.dwg, 10/21/2022 7:11:06 AM, lukem