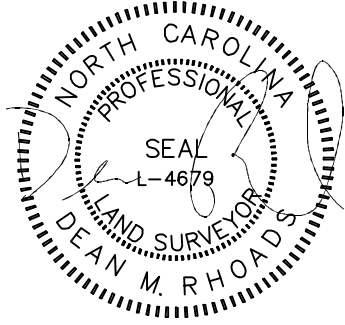
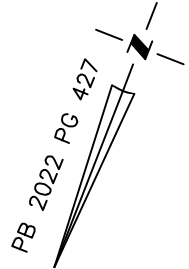


VICINITY MAP
Not To Scale



IMPERVIOUS SURFACE AREA	
DESCRIPTION	AREA
HOUSE w/ PORCH	1,358 S.F.
PORCH/HVAC/MISC.	109 S.F.
DRIVEWAY & WALKS	431 S.F.
TOTAL (PROPOSED)=	1,898 S.F.
*TOTAL (ALLOWED)=	2,300 S.F.

* PB 2022 PG 419

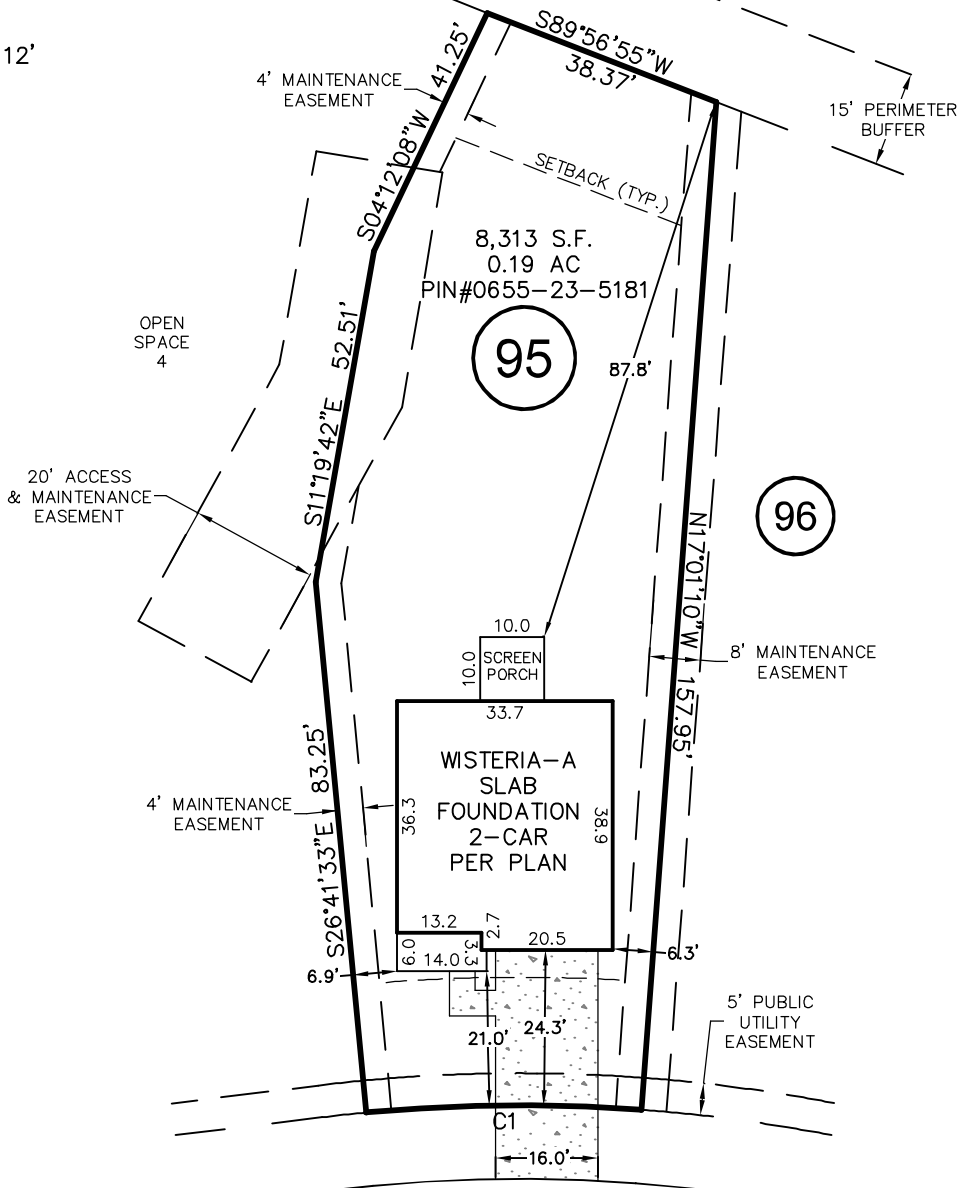


SETBACKS: PB 2022 PG 419

- FRONT - 20'
- REAR - 20'
- SIDE - 4'
- CORNER YARD - 12'

N/F
REGALWOOD HOMEOWNERS
ASSOC INC
DB 1343, PG 382

N/F
JERRY L SHOWEN
DB 1282, PG 847



RETREAT DRIVE

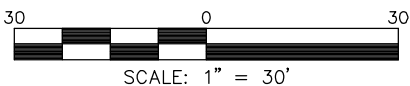
50' PUBLIC R/W
& UTILITY

CURVE	RADIUS	ARC LENGTH	CH LENGTH	CH BEARING
C1	255.00'	43.05'	43.00'	N68°08'39"E

THIS PROPERTY MAY BE SUBJECT TO ANY AND ALL APPLICABLE DEED RESTRICTIONS, EASEMENTS, RIGHT-OF-WAY, UTILITIES AND RESTRICTIVE COVENANTS WHICH MAY BE OF RECORD OR IMPLIED

THIS DRAWING DOES NOT REFLECT AS-BUILT INFORMATION

PRELIMINARY PLAT
NOT FOR RECORDATION, CONVEYANCES, OR SALES.



RESIDENTIAL LAND SERVICES, PLLC.

1917 Evans Road
Cary, North Carolina 27513
Phone (919) 378-9316
Firm License # P-0873

HOUSE LOCATION PLOT PLAN

FOR
#214 RETREAT DRIVE
LOT 95, SERENITY SUBDIVISION, PHASE 1 (LOTS LESS THAN 9,000 SF)
Hector's Creek Township, Harnett County, North Carolina

PROPERTY OF: GARMAN HOMES
MAP BOOK 2022 PAGE 419-433 DEED REFERENCE _____

DRAWN BY: JLS

DATE: AUGUST 26, 2022