

SOUTHEASTERN SOIL & ENVIRONMENTAL ASSOC., INC.

PROPOSED SUBSURFACE WASTE DISPOSAL SYSTEM DETAIL SHEET

SUBDIVISION: Liberty Meadow

LOT 20

INITIAL SYSTEM: ^{GRAV} APPROVED 25% REDUCTION

REPAIR ^{GRAV} Approved 25% Reduction

DISTRIBUTION: SERIAL

DISTRIBUTION SERIAL

BENCHMARK: 100.0

LOCATION BC IRON 20/21

NO. BEDROOMS: 3

LTAR 0.3 gpd/ft²

LINE	FLAG COLOR	ELEVATION	LENGTH	
I {	1	R	106.58	40
	2	Y	105.67	95
	3	R	104.75	95
	4a	Y	104.17	70
			300	
R {	4b	Y	104.17	25
	5	R	103.17	95
	6	Y	102.08	95
	7	R	101.17	95
			310	

BY B.C. Ragnar

DATE 02/24/2022

TYPICAL PROFILE

THERE SHALL BE NO GRADING,

0-21 LS vfri gran

CUTTING, LOGGING OR OTHER SOIL

21-36 sCL firm SBK

DISTURBANCE IN SEPTIC AREA

Pm ≥ 33"

HEALTH DEPARTMENT USE ONLY.

DESIGNS DO NOT GURANTEE FUNCTIONALITY

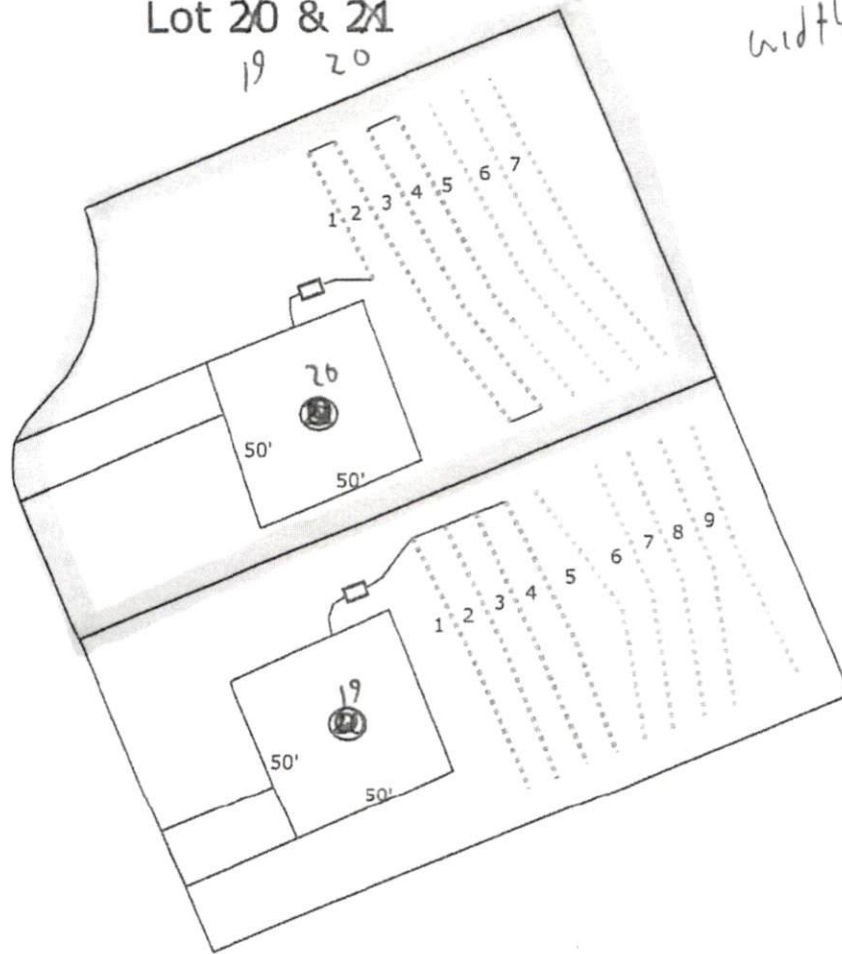
Southeastern Soil & Environmental Associates, Inc.

P.O. Box 9321
Fayetteville, NC 28311
Phone/Fax (910) 822-4540
Email mike@southeasternsoil.com

Liberty Meadow
Lot 20 & 21

19 20

Depth 50'
width = unlimited



Scale:
1" = 50'