

Attach rim board to joist w/1-100 box nail top & bottom of joist.

A3 Must have 1 3/4" minimum bearing at ends

For information on lateral load capacities refer to literature or load schedule.

A7 Wall nail typically 16d (3 1/2") #12 ec. Deck nail typically 8d (2 1/2") #8 ec. Joist spanning in either direction.

E1 LOAD BEARING CANTILEVER

Ø diameter maximum hole may be cut in each blocking panel for 1 1/2" x 1 1/2" joists. Ø diameter maximum for 3/4" joists or for blocking panels less than 12" long. Do not cut edges.

E1 Backer block: Install tight to top flange (tight to bottom flange with face mount hangers), both sides of web with single blocks. Attach with 10-10d (3") box nails, clinched when possible.

H2 Filler block: Nail with 10-10d (3") box nails, clinched when possible.

* With top flange hangers, backer block required only for downward loads exceeding 250 lbs. or for uplift conditions (fastened load value is 250 lbs. for Limit States Design).

L6 CONNECTION OF MULTIPLE PIECES OF TOP-LOADED BEAMS

LVL 4 PSL (1 3/4" Width Pieces)

- Minimum of 2 rows 16d (3 1/2") nails @ 12" oc.
- Minimum of 3 rows 16d (3 1/2") nails @ 12" oc. for 14", 11", 10" beams.
- Multiple pieces of LVL 4 PSL can be nailed or bolted together to form a header or beam of the required size, up to a maximum width of 7 inches. Minimum of 2 rows 1/2" bolts @ 24" oc. staggered.

For side-loaded multiple member beams, additional nailing or bolting may be required. See current Joist literature.

L6 LVL HANGER NAILS INSTALLATION

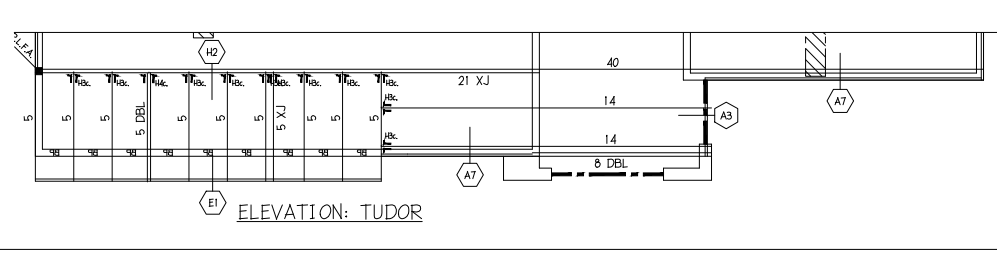
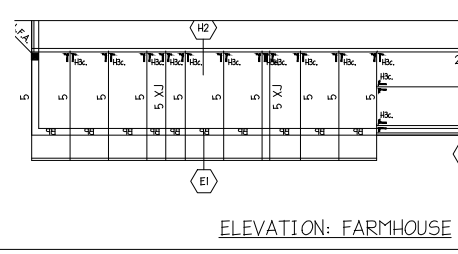
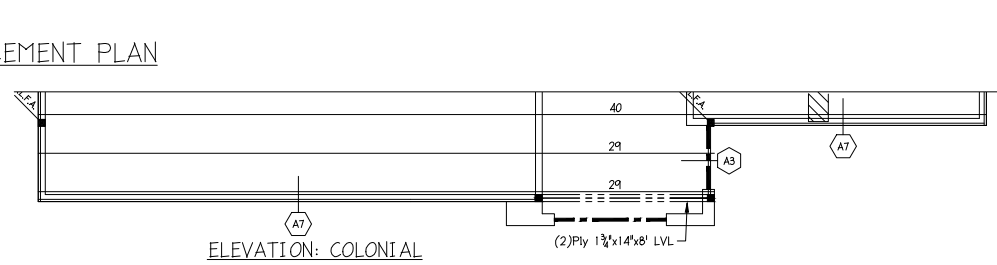
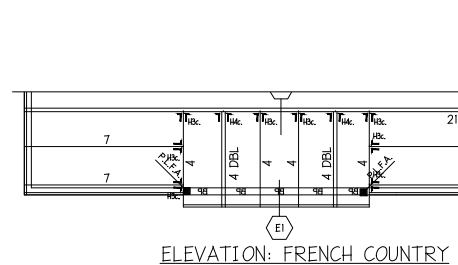
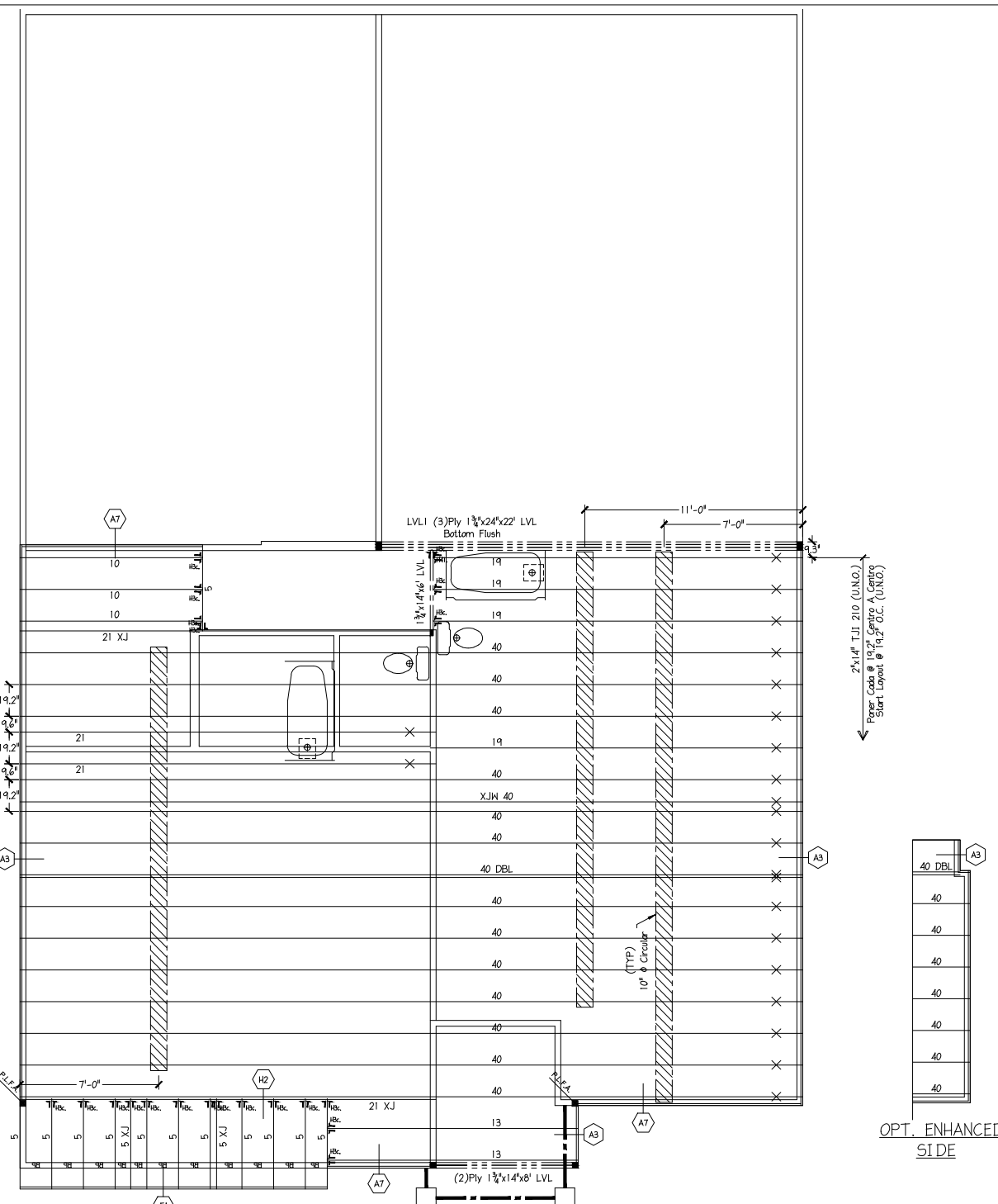
FILL ALL NAIL HOLES USING 16D COMMON (0.162 X 3 1/2") NAILS. DO NOT USE AIR GUN NAILS OR NIOD NAILS.

P.L.F.A. POINT LOAD FROM ABOVE (P.L.F.A.)

USE SOLID BLOCKING TO TRANSFER LOAD FROM ABOVE TO FOUNDATION

DO NOT CUT ORANGE END NO CORTE EL COLOR NARANJA

"X" INDICATES ORANGE END "X" INDICAR EL COLOR NARANJA



ENGINEERED WOOD MATERIAL LIST				
MATTAMY HOMES TETON 2ND FLOOR I-JOIST PLACEMENT PLAN				
BASE - ELEVATION: CRAFTSMAN				
MARK	QTY	CUT LENGTH	DESCRIPTION	Notes
5	14	5'-0"	2" x 14" TJI 210	
10	3	10'-0"	2" x 14" TJI 210	
13	2	13'-0"	2" x 14" TJI 210	
19a	4	19'-0"	2" x 14" TJI 210 < 2 >	
21a	2	21'-0"	2" x 14" TJI 210	
21b	2	21'-0"	2" x 14" TJI 210 < 1 >	
40a	1	40'-0"	2" x 14" TJI 210 < 1 >	
40b	2	40'-0"	2" x 14" TJI 210 < 2 >	
40c	13	40'-0"	2" x 14" TJI 210 < 3 >	(Total 926')
BEAMS AND HEADERS				
LVL	1	6'-0"	1 3/4" x 14" LVL 2.0E (Flush)	
LVL	2	8'-0"	1 3/4" x 14" LVL 2.0E (Flush)	
LVL1	3	22'-0"	1 3/4" x 24" LVL 2.0E (Flush)	
ACCESSORIES & OTHER MATERIALS (Simpson Hangers)				
ITEM	QTY	UNIT	DESCRIPTION	
14" Rim	101	LF	1 1/2"x14" TJ Rim 9 pcs@12" or 7 pcs@16"	
BP	11	1'-5 1/8"	14" Blocking Panel [Total 22']	
H41	1	PCS	HUS1.81/10 1 3/4" Face Mnt -Bm Hgr	
H4c	21	PCS	IUS2.06/14 Single Face Mnt Hanger	
10CUT14C	54	HOLE	10" Circular Cutout	
TJLAYOUT	1	PCS	TJI Placement Layout	
TJGUIDE	1	PCS	TJI Installation Guide	
ELEVATION: COLONIAL				
MARK	QTY	CUT LENGTH	DESCRIPTION	
5	-13	5'-0"	2" x 14" TJI 210	
13	-2	13'-0"	2" x 14" TJI 210	
21	-1	21'-0"	2" x 14" TJI 210	
29	+2	29'-0"	2" x 14" TJI 210	
40	-1	40'-0"	2" x 14" TJI 210 [Total -94']	
H3c	-14	PCS	IUS2.06/14 Single Face Mnt Hanger	
BP	+4	1'-5 1/8"	14" Blocking Panel [Total -16']	
14" Rim	+4	LF	1 1/2"x14" TJ Rim 0 pcs@12" or 0 pcs@16"	
ELEVATION: FRENCH COUNTRY				
MARK	QTY	CUT LENGTH	DESCRIPTION	
4	+8	4'-0"	2" x 14" TJI 210	
5	-13	5'-0"	2" x 14" TJI 210	
7	+2	7'-0"	2" x 14" TJI 210	
8	-2	8'-0"	2" x 14" TJI 210	
13	-2	13'-0"	2" x 14" TJI 210	
14	+2	14'-0"	2" x 14" TJI 210	
40	-1	40'-0"	2" x 14" TJI 210 [Total -41']	
H3c	-6	PCS	IUS2.06/14 Single Face Mnt Hanger	
H4c	+2	PCS	M1U4.28/14 Double Face Mnt Hanger	
BP	-6	1'-5 1/8"	14" Blocking Panel [Total -9']	
14" Rim	+4	LF	1 1/2"x14" TJ Rim 0 pcs@12" or 0 pcs@16"	
LVL	-2	8'-0"	1 3/4" x 14" LVL 2.0E (Flush)	
ELEVATION: TUDOR				
MARK	QTY	CUT LENGTH	DESCRIPTION	
5	-1	5'-0"	2" x 14" TJI 210	
8	+2	8'-0"	2" x 14" TJI 210	
13	-2	13'-0"	2" x 14" TJI 210	
14	+2	14'-0"	2" x 14" TJI 210	
40	-1	40'-0"	2" x 14" TJI 210 [Total -27']	
H3c	-3	PCS	IUS2.06/14 Single Face Mnt Hanger	
H4c	+1	PCS	M1U4.28/14 Double Face Mnt Hanger	
BP	-2	1'-5 1/8"	14" Blocking Panel [Total -3']	
14" Rim	+1	LF	1 1/2"x14" TJ Rim 0 pcs@12" or 0 pcs@16"	
LVL	+2	8'-0"	1 3/4" x 14" LVL 2.0E (Flush)	
ELEVATION: FARMHOUSE				
MARK	QTY	CUT LENGTH	DESCRIPTION	
5	-1	5'-0"	2" x 14" TJI 210	
13	-2	13'-0"	2" x 14" TJI 210	
14	+2	14'-0"	2" x 14" TJI 210	
40	-1	40'-0"	2" x 14" TJI 210 [Total -43']	
H3c	+1	PCS	IUS2.06/14 Single Face Mnt Hanger	
H50	+1	PCS	HUS410 3/4" Face Mnt -Bm Hgr	
BP	-1	1'-5 1/8"	14" Blocking Panel [Total -2']	
14" Rim	-3	LF	1 1/2"x14" TJ Rim 0 pcs@12" or 0 pcs@16"	
LVL	+2	8'-0"	1 3/4" x 14" LVL 2.0E (Flush)	
OPT. ENHANCED SIDE				
MARK	QTY	CUT LENGTH	DESCRIPTION	
40	+1	40'-0"	2" x 14" TJI 210 [Total -40']	
14" Rim	+1	LF	1 1/2"x14" TJ Rim 0 pcs@12" or 0 pcs@16"	

SEE MATERIAL LIST FOR DEPTH, GRADE & LENGTH

INDICATED L-XEST
INDICATED TIMBERFRAMING HGR. LVL
INDICATED BLOCKING LVL
INDICATED PARALLEL PCL
INDICATED GUSSET LVL

INDICATES A SECTION FROM THE INSTALLATION GUIDE SERIES IS ALSO SHOWN ON THIS SHEET

LOAD BEARING WALL ABOVE = [Symbol]
BEAM BY CHAIR [Symbol]
EXTRA JOIST (1) UNDER WALL [Symbol]
DOUBLE JOIST (2) [Symbol]
TYPICAL BRACING PANEL [Symbol]
1" UP OR 1" UP WITH BOARD [Symbol]
CONCENTRATED POINT LOAD FROM ABOVE [Symbol]
WALL IS INDICATED TO BE CONCRETE OR MASONRY [Symbol]
WALL IS INDICATED TO BE MASONRY [Symbol]

THIS SHOP DRAWING IS BASED ON THE FOLLOWING:

PROJECT LOCATION: [Blank]
PROJECT NUMBER: [Blank]
ARCHITECT DNGS BY: [Blank]
ARCH LATEST REVISION: [Blank]
CHECKED BY: [Blank]
STRUCTURAL REVIEW BY: [Blank]
DATE: [Blank]

DESIGN DATA

LIVE 40 PSF
DEAD 10 PSF
TOTAL LOAD = 50 PSF

STRESS DURATION = 100%
DEFLECTION CRITERIA = (L/480)

Builders FirstSource

FOR MANUFACTURER'S INSTALLATION GUIDE REFER TO: [Blank] (CONSULTANT APPROVED GUIDE USE ONLY)
THIS DRAWING IS THE PROPERTY OF BUILDERS FIRST SOURCE. IT IS TO BE USED ONLY FOR THE PROJECT AND LOCATION SPECIFICALLY IDENTIFIED HEREIN. IT IS NOT TO BE REPRODUCED, COPIED, OR TRANSMITTED IN ANY FORM OR BY ANY MEANS, ELECTRONIC OR MECHANICAL, INCLUDING PHOTOCOPYING, RECORDING, OR BY ANY INFORMATION STORAGE AND RETRIEVAL SYSTEM. WITHOUT THE WRITTEN PERMISSION OF BUILDERS FIRST SOURCE. THE USER OF THIS DRAWING AGREES TO HOLD BUILDERS FIRST SOURCE HARMLESS FROM AND AGAINST ALL CLAIMS, DAMAGES, LOSSES AND EXPENSES, INCLUDING REASONABLE ATTORNEY'S FEES, ARISING OUT OF OR RESULTING FROM THE USE OF THIS DRAWING. THE USER OF THIS DRAWING AGREES TO INDEMNIFY AND HOLD BUILDERS FIRST SOURCE HARMLESS FROM AND AGAINST ALL CLAIMS, DAMAGES, LOSSES AND EXPENSES, INCLUDING REASONABLE ATTORNEY'S FEES, ARISING OUT OF OR RESULTING FROM THE USE OF THIS DRAWING.

BUILDER: MATTAMY HOMES
MODEL: TETON
2ND FLOOR I-JOIST PLACEMENT PLAN
DATE: MONDAY, 8 NOVEMBER 2021 - 10:03 AM
FILE: I:\NAPET\I\ACADDING\MATTAMY HOMES\TETON.DWG

DRAWN BY: NJH DATE: 11/8/21

SHEET: 2 OF 2 SHEETS

