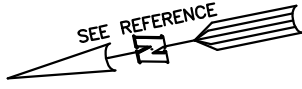
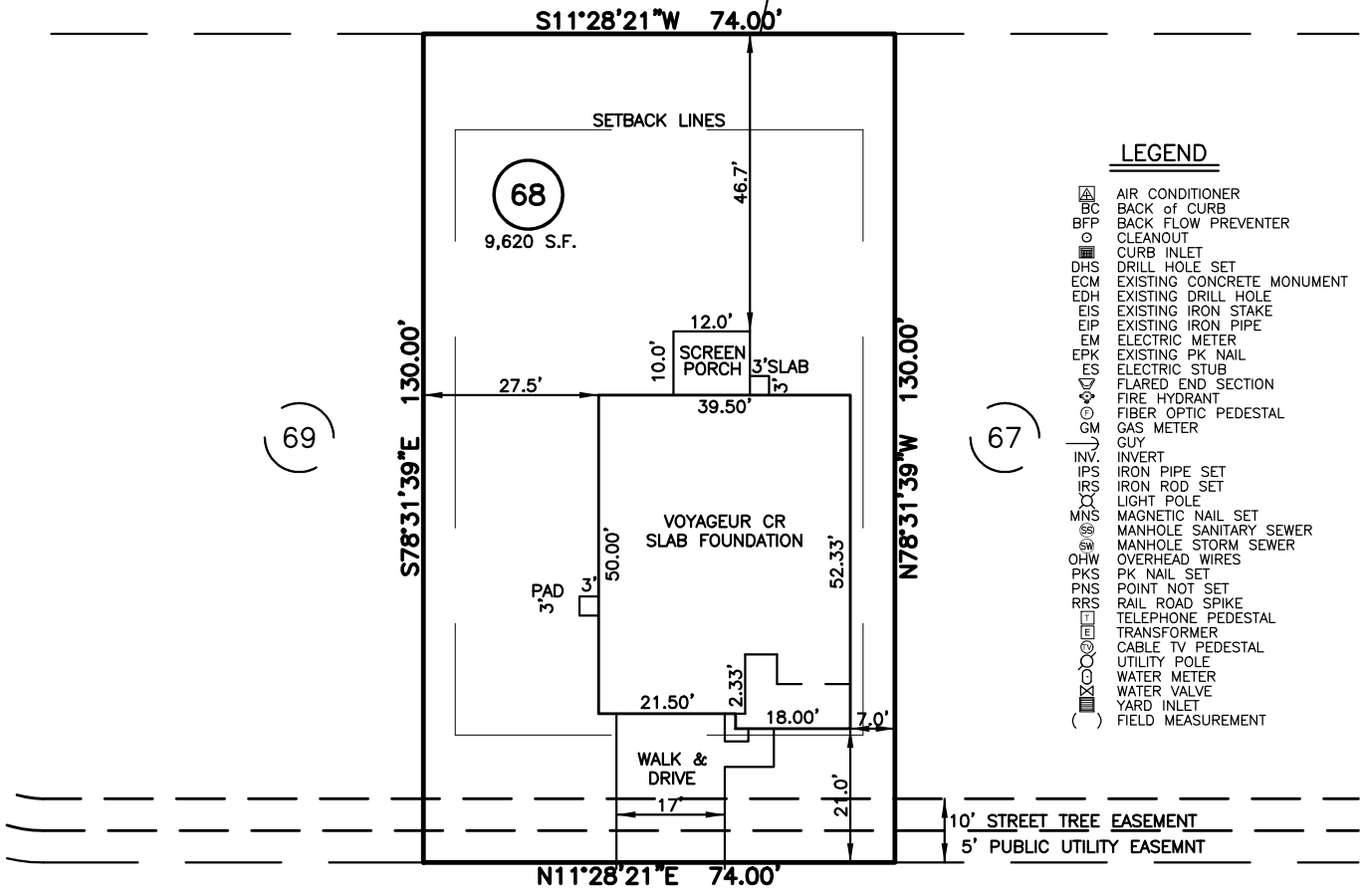


PLOT PLAN FOR
MATTAMY HOMES
 23 KINGSFORD LANE
 LOT 68, PROVIDENCE CREEK PHASE 2
 HECTORS CREEK AND BLACK RIVER TOWNSHIP, HARNETT COUNTY, NORTH CAROLINA



(23)

OPEN SPACE #6
 PROVIDENCE CREEK PHASE 1
 B.M. 2022, PG. 346-351



LEGEND

- ⊠ AIR CONDITIONER
- BC BACK OF CURB
- BFP BACK FLOW PREVENTER
- CLEANOUT
- ⊞ CURB INLET
- DHS DRILL HOLE SET
- ECM EXISTING CONCRETE MONUMENT
- EDH EXISTING DRILL HOLE
- EIS EXISTING IRON STAKE
- EIP EXISTING IRON PIPE
- EM ELECTRIC METER
- EPK EXISTING PK NAIL
- ES ELECTRIC STUB
- FLR FLARED END SECTION
- FH FIRE HYDRANT
- FOP FIBER OPTIC PEDESTAL
- GM GAS METER
- GUY GUY
- INV. INVERT
- IPS IRON PIPE SET
- IRS IRON ROD SET
- LP LIGHT POLE
- MNS MAGNETIC NAIL SET
- MS MANHOLE SANITARY SEWER
- MSW MANHOLE STORM SEWER
- OHW OVERHEAD WIRES
- PKS PK NAIL SET
- PNS POINT NOT SET
- RRS RAIL ROAD SPIKE
- TEP TELEPHONE PEDESTAL
- TRF TRANSFORMER
- CTP CABLE TV PEDESTAL
- UP UTILITY POLE
- WM WATER METER
- WV WATER VALVE
- YI YARD INLET
- () FIELD MEASUREMENT

KINGSFORD LANE
 50' PUBLIC R/W

SETBACK INFO

FRONT:	20'
REAR:	15'
SIDES:	5'
CORNER SIDE:	15'

REFERENCES:
 BM 2022 PGS 19-23



SCALE: 1" = 30'

NOTES

1. THIS SURVEY SUBJECT TO ANY FACTS THAT MAY BE DISCLOSED BY A FULL AND ACCURATE TITLE SEARCH.
2. THIS MAP MAY NOT BE A CERTIFIED SURVEY AND HAS NOT BEEN REVIEWED BY A LOCAL GOVERNMENT AGENCY FOR COMPLIANCE WITH ANY APPLICABLE LAND DEVELOPMENT REGULATIONS AND HAS NOT BEEN REVIEWED FOR COMPLIANCE WITH RECORDING REQUIREMENTS FOR PLATS.

PLOT PLAN
 PRELIMINARY PLAT- NOT FOR RECORDATION,
 CONVEYANCE OR SALES

DATE: AUG. 17, 2022

REV CODE: 1.FLIP, 2.PLAN, 3.ROTATE, 4.MOVE, 5.SS
 6.SEVERAL OF ABOVE, 7.LAND FEATURE, 8. OTHER

F.B. _____

RWK, PA
 engineering ~ surveying
 Corporate License: C-1771
 101 W. Main St., Suite 202
 Garner, NC 27529
 Phone (919) 779-4854
 Fax (919) 779-4056