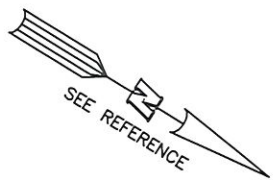


AS-BUILT IMPROVEMENTS FOR
MATTAMY HOMES

90 DAVINHALL DRIVE
LOT 101, PROVIDENCE CREEK PHASE 2

HECTORS CREEK AND BLACK RIVER TOWNSHIP, HARNETT COUNTY, NORTH CAROLINA



(24)
BM 2006, PG 326

N68°44'52"W
49.44'

N03°03'21"E
106.19'

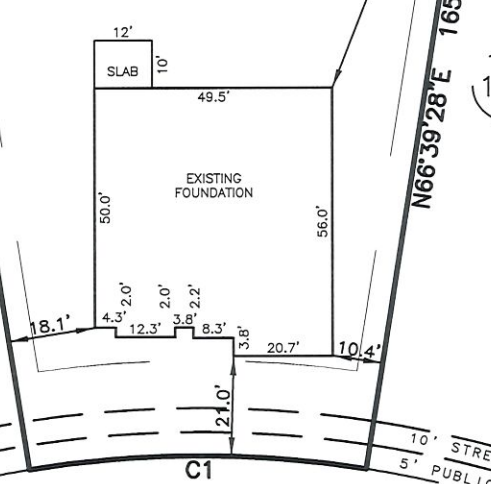
OPEN SPACE #3

(101)
19,905 S.F.

15' TYPE 'A' PERIMETER BUFFER
40' PUBLIC UTILITY EASEMENT

(102)

SET BACK LINES
S48°45'35"W
197.47'



N66°39'28"E
165.02'

(100)

LEGEND

- ▲ AIR CONDITIONER
- BC BACK OF CURB
- BFP BACK FLOW PREVENTER
- CLEANOUT
- CURB INLET
- DHS DRILL HOLE SET
- ECM EXISTING CONCRETE MONUMENT
- EDH EXISTING DRILL HOLE
- EISD EXISTING IRON STAKE
- EIP EXISTING IRON PIPE
- EM ELECTRIC METER
- EPK EXISTING PK NAIL
- ES ELECTRIC STUB
- FLA FLARED END SECTION
- FHY FIRE HYDRANT
- FOP FIBER OPTIC PEDESTAL
- GM GAS METER
- GUY GUY
- INV. INVERT
- IPS IRON PIPE SET
- IRS IRON ROD SET
- LP LIGHT POLE
- MNS MAGNETIC NAIL SET
- MSS MANHOLE SANITARY SEWER
- MSS MANHOLE STORM SEWER
- OHV OVERHEAD WIRES
- PKS PK NAIL SET
- PNS POINT NOT SET
- RRS RAIL ROAD SPIKE
- T TELEPHONE PEDESTAL
- TR TRANSFORMER
- CTV CABLE TV PEDESTAL
- UP UTILITY POLE
- WM WATER METER
- WV WATER VALVE
- YI YARD INLET
- FM FIELD MEASUREMENT

DAVINHALL DRIVE
50' PUBLIC R/W

SETBACK INFO

FRONT: 20'
REAR: 15'
SIDES: 5'
CORNER SIDE: 15'

THIS AS-BUILT IS FOR CODE COMPLIANCE. NOT FOR SALES OR CONVEYANCE

CURVE	RADIUS	ARC LENGTH	CHORD LENGTH	CHORD BEARING	DELTA ANGLE
C1	225.00'	70.29'	70.00'	S 32°17'28" E	17°53'53"

WAKE COUNTY, NORTH CAROLINA

I CERTIFY THAT THIS MAP WAS DRAWN UNDER MY SUPERVISION FROM AN ACTUAL SURVEY MADE UNDER MY SUPERVISION; THAT THE IMPROVEMENTS LIE WHOLLY UPON THE LOT AND THAT THERE WERE NO ENCROACHMENTS OBSERVED EXCEPT AS SHOWN, AND THAT THE SURVEY IS OF AN EXISTING PARCEL OR PARCELS OF LAND.

Charles R. Piratzky

10-5-2022

CHARLES R. PIRATZKY, P.L.S.
L-2813

DATE



REFERENCES:

BM 2022 PGS 19-23



SCALE: 1" = 40'

NOTES

- THIS SURVEY SUBJECT TO ANY FACTS THAT MAY BE DISCLOSED BY A FULL AND ACCURATE TITLE SEARCH.
- THIS MAP MAY NOT BE A CERTIFIED SURVEY AND HAS NOT BEEN REVIEWED BY A LOCAL GOVERNMENT AGENCY FOR COMPLIANCE WITH ANY APPLICABLE LAND DEVELOPMENT REGULATIONS AND HAS NOT BEEN REVIEWED FOR COMPLIANCE WITH RECORDING REQUIREMENTS FOR PLATS.

DATE: OCT. 3, 2022

Q:\FieldLoc\PCK101FDN.txt

RWK, PA

engineering ~ surveying
Corporate License: C-1771
101 W. Main St., Suite 202
Garner, NC 27529
Phone (919) 779-4854
Fax (919) 779-4056

C:\Providence_Creek\PCK101\PCK_101.dwg