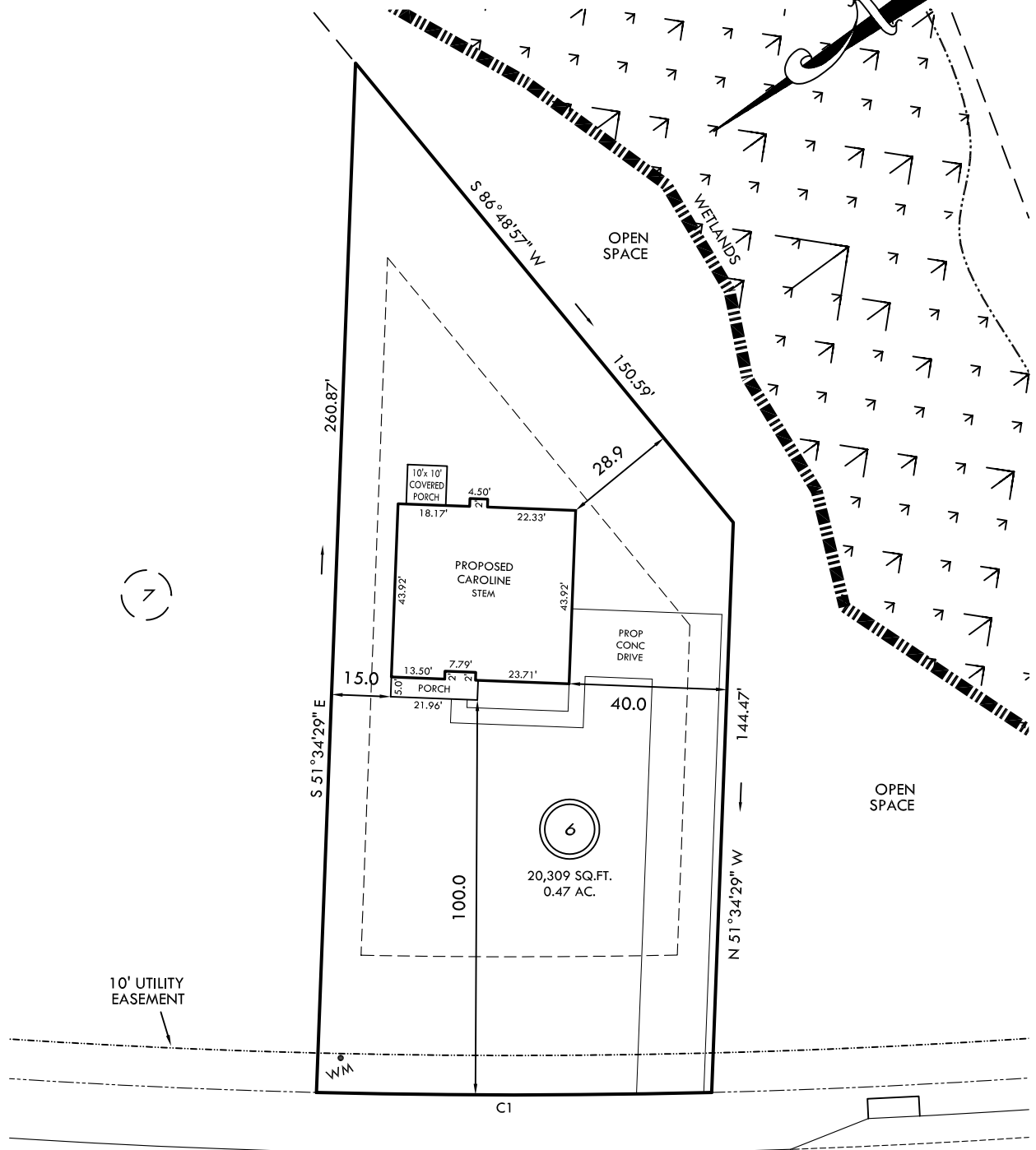


I, MICHAEL P. GRIFFIN, certify that under my direction and supervision this map was drawn from an actual field survey; that the error of closure of the survey as calculated by coordinates is 1: 10,000+; that the area shown hereon was calculated by coordinates.

Witness my hand and seal this day of MONTH 2022.

BM 2022, POS. 341-244
HARNETT CO. REGISTRY



SOLOMON DRIVE

50' R/W (PUBLIC & UTILITY ACCESS)

IMPERVIOUS AREAS

HOUSE	2,195 SQ. FT.
DRIVE & WALKS	2,604 SQ. FT.
PATIO	0 SQ. FT.
TOTAL	4,799 SQ. FT.
ALLOWED	11,082 SQ. FT.

SETBACKS

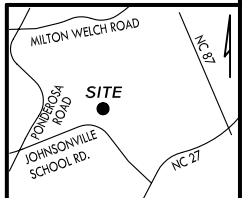
FRONT	35'
REAR	25'
SIDE	10'
CORNER SIDE	20'

REVISION: SIDELOADK 8/23/22
REVISION: MOVE BACK, LEFT 8/12/22

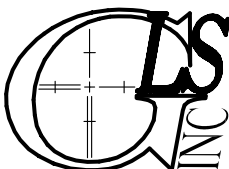
C1 R=1975.00' L=100.08' N36°14'54"E 100.07'

LEGEND

EIP	EXISTING IRON PIPE	FES	FLARED END SECTION
IPS	IRON PIPE SET	WM	WATER METER
R/W	RIGHT OF WAY	CO	CLEAN OUT
N/F	NOW OR FORMERLY	FH	FIRE HYDRANT
EIS	EXISTING IRON STAKE	CB	CATCH BASIN



P R E L I M I N A R Y
NOT FOR RECORDATION,
SALES OR CONVEYANCE



GRIFFIN LAND SURVEYING, INC.

P. O. BOX 148
FUQUAY-VARINA, NC 27526
(919) - 567-1963

PLOT PLAN
FOR
BEN STOUT
CONSTRUCTION
LIBERTY MEADOWS

LOT 6
SOLOMON DRIVE
PINEVIEW, N.C.

HARNETT COUNTY JOHNSONVILLE TOWNSHIP

DRAWN BY **KDF**

DATE **7/25/22**

CHECKED BY **MPG**

SCALE **1" = 40'**