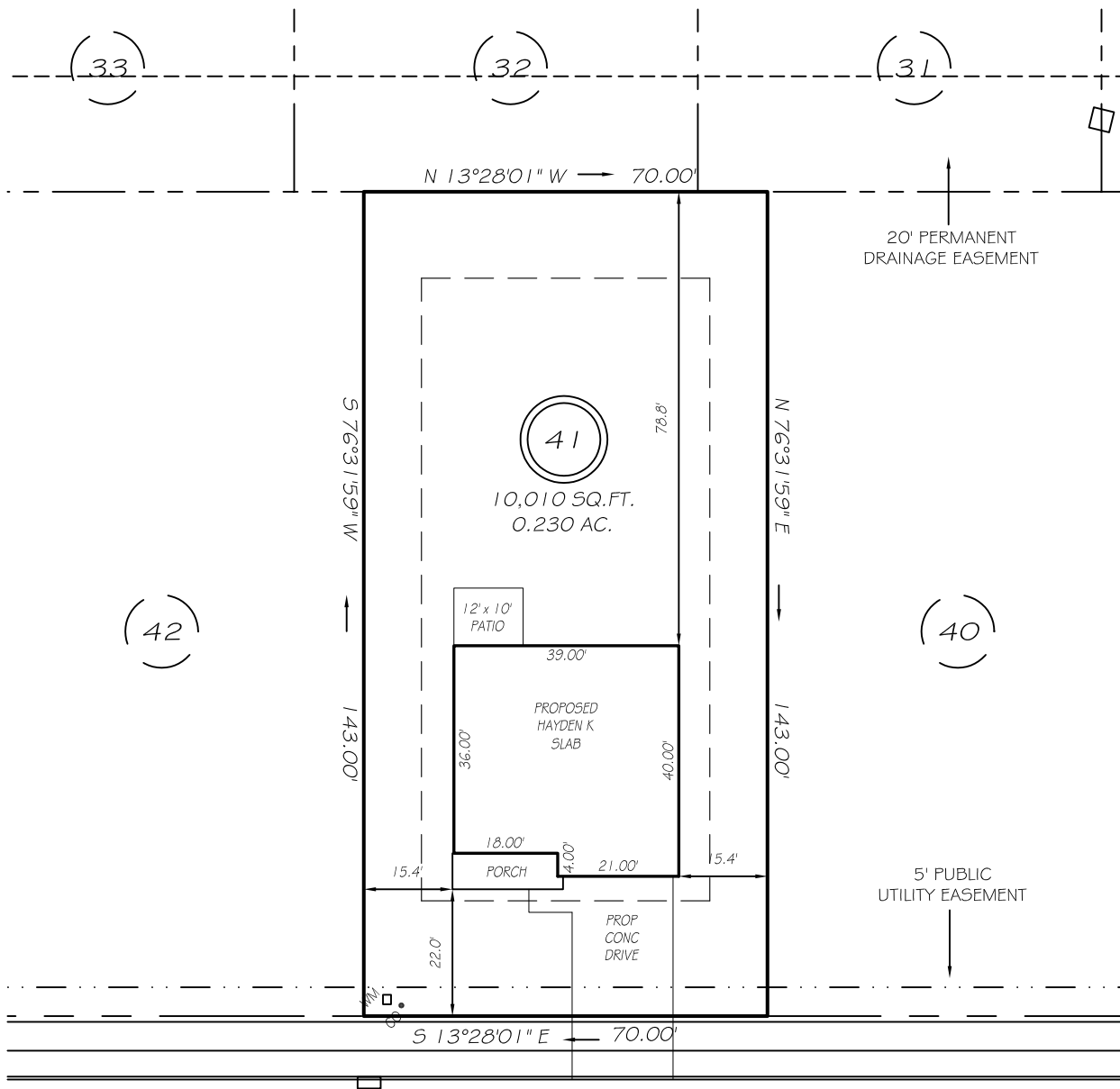


I, MICHAEL P. GRIFFIN, certify that under my direction and supervision this map was drawn from an actual field survey; that the error of closure of the survey as calculated by coordinates is 1: 10,000+; that the area shown hereon was calculated by coordinates.

Witness my hand and seal this day of MONTH 2022.

BM 2022 PGS 156-162
HARNETT CO. REGISTRY



WINTERBERRY WAY
50' PUBLIC RW & UTILITY

IMPERVIOUS AREAS

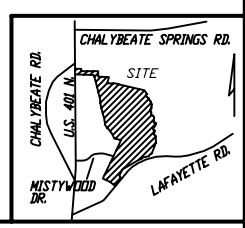
HOUSE	1604 SQ. FT.
DRIVE & WALKS	464 SQ. FT.
PATIO	120 SQ. FT.
TOTAL	2188 SQ. FT.
ALLOWED	3000 SQ. FT.

SETBACKS

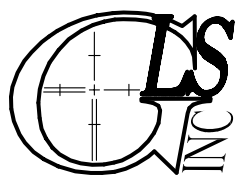
FRONT	20'
REAR	15'
SIDE	10'
CORNER SIDE	15'

LEGEND

EIP	EXISTING IRON PIPE	FES	FLARED END SECTION
IPS	IRON PIPE SET	WM	WATER METER
R/W	RIGHT OF WAY	CO	CLEAN OUT
N/F	NOW OR FORMERLY	FH	FIRE HYDRANT
EIS	EXISTING IRON STAKE	CB	CATCH BASIN



PRELIMINARY
NOT FOR RECORDATION,
SALES OR CONVEYANCE



GRIFFIN LAND SURVEYING, INC.
P. O. BOX 148
FUQUAY-VARINA, NC 27526
(919) - 567 - 1963

PLOT PLAN
FOR
D. R. HORTON
WOODGROVE
LOT 41
WINTERBERRY WAY
NORTH CAROLINA
HARNETT CO. HECTOR'S CREEK TWSHP

DRAWN BY NMF	DATE 5/13/22
CHECKED BY MPG	SCALE 1" = 30'