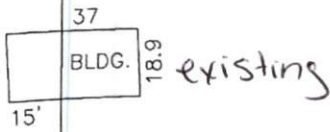
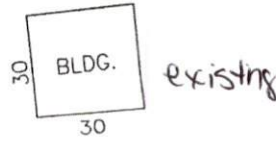


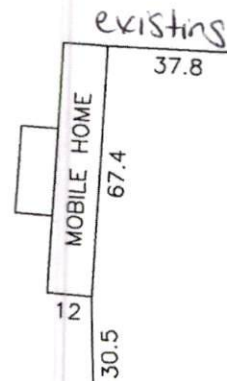
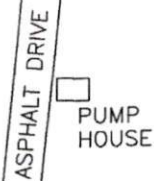
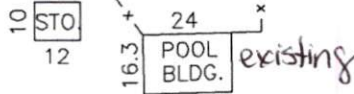
N 19°52'20" 280.60'

3.50 ACRES

EX. ANGLE IRON 10" AG



existing



1/2"SRB FWC

N 27°07'34" W 350.34'

1/2"SRB FWC

30.00'

CP

266.28' S 62°43'40" W

265.00' S 62°45'52" W

405.82' S 24°42'02" E

1/2"SRB FWC

CP

OLD US 421-SR 1291

60' PUBLIC R/W