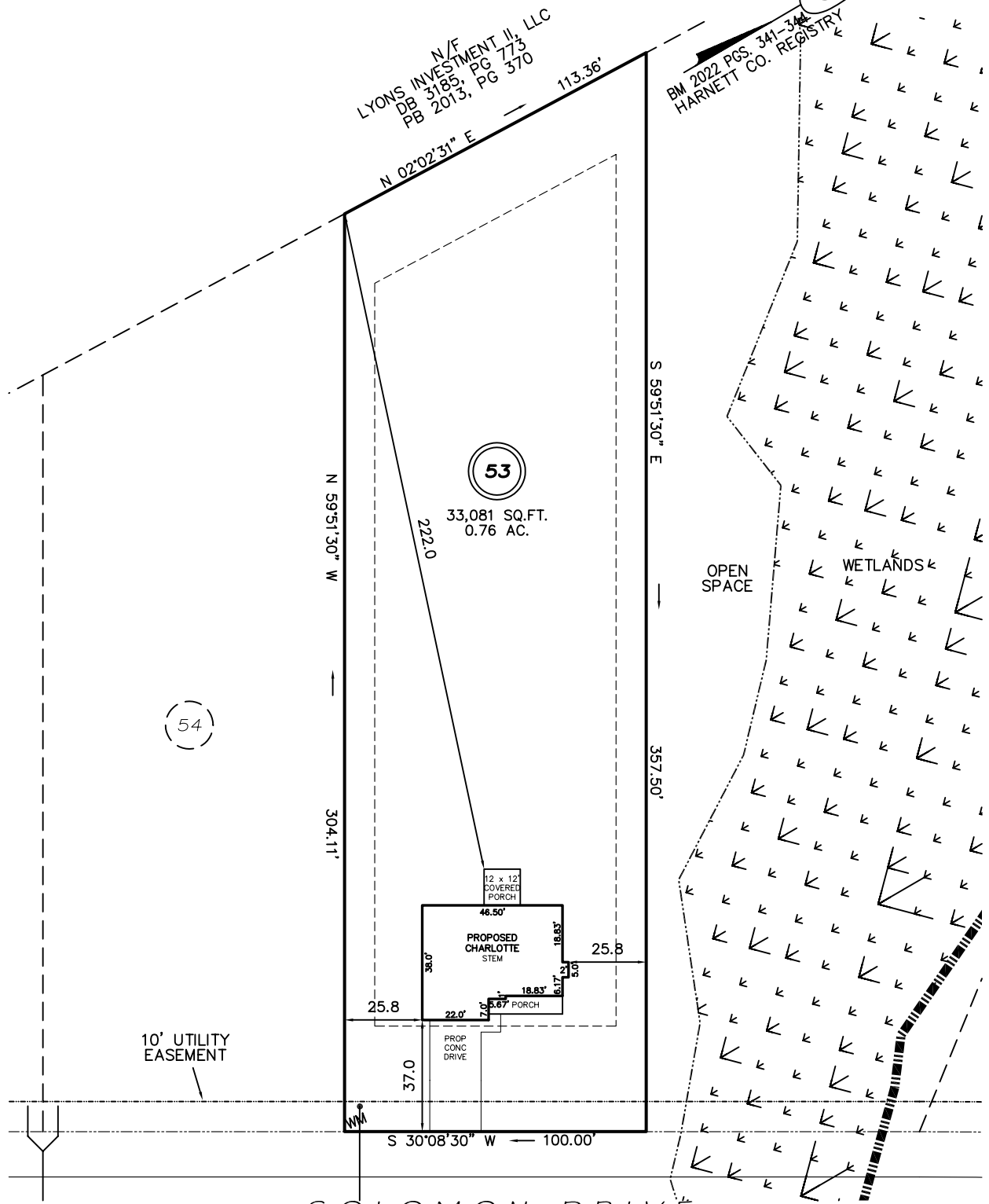


I, MICHAEL P. GRIFFIN, certify that under my direction and supervision this map was drawn from an actual field survey; that the error of closure of the survey as calculated by coordinates is 1: 10,000+; that the area shown hereon was calculated by coordinates.

Witness my hand and seal this day of MONTH 2022.



IMPERVIOUS AREAS

HOUSE	1,872 SQ. FT.
DRIVE & WALKS	663 SQ. FT.
PATIO	0 SQ. FT.
TOTAL	2,535 SQ. FT.
ALLOWED	11,082 SQ. FT.

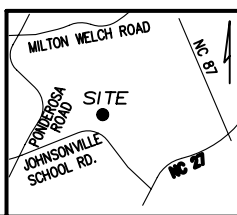
50' R/W (PUBLIC & UTILITY ASSESS)

SETBACKS

FRONT	35'
REAR	25'
SIDE	10'
CORNER SIDE	20'

LEGEND

- EIP EXISTING IRON PIPE
- IPS IRON PIPE SET
- R/W RIGHT OF WAY
- N/F NOW OR FORMERLY
- EIS EXISTING IRON STAKE
- FES FLARED END SECTION
- WM WATER METER
- CO CLEAN OUT
- FH FIRE HYDRANT
- CB CATCH BASIN



PRELIMINARY
NOT FOR RECORDATION,
SALES OR CONVEYANCE

GLS INC GRIFFIN LAND SURVEYING, INC.
P. O. BOX 148
FUQUAY-VARINA, NC 27526
(919) - 567-1963

PLOT PLAN
FOR
BEN STOUT
CONSTRUCTION
LIBERTY MEADOWS
LOT 53
SOLOMAN DRIVE
PINEVIEW, N.C.
HARNETT COUNTY JOHNSONVILLE TOWNSHIP

DRAWN BY KDF	DATE 7/25/22
CHECKED BY MPG	SCALE 1" = 50'