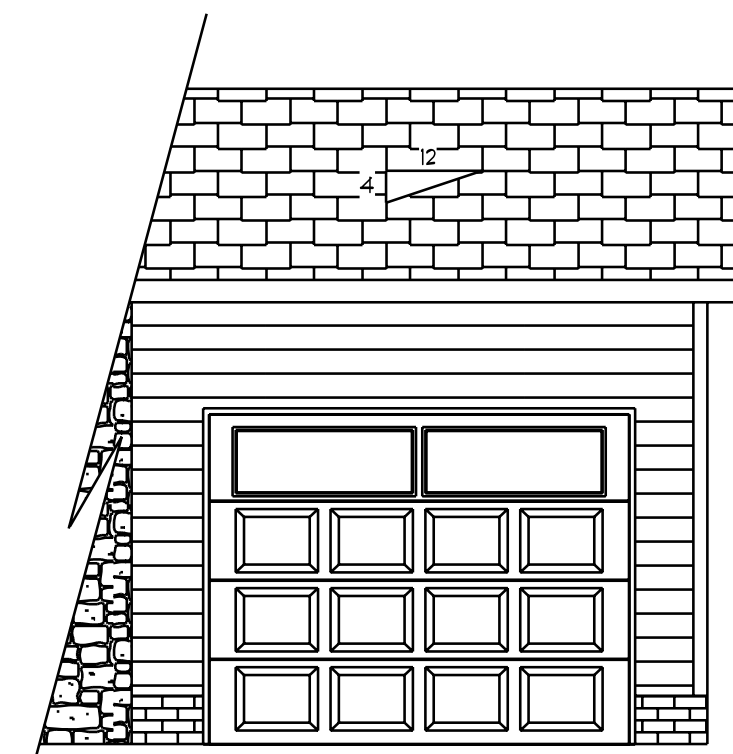
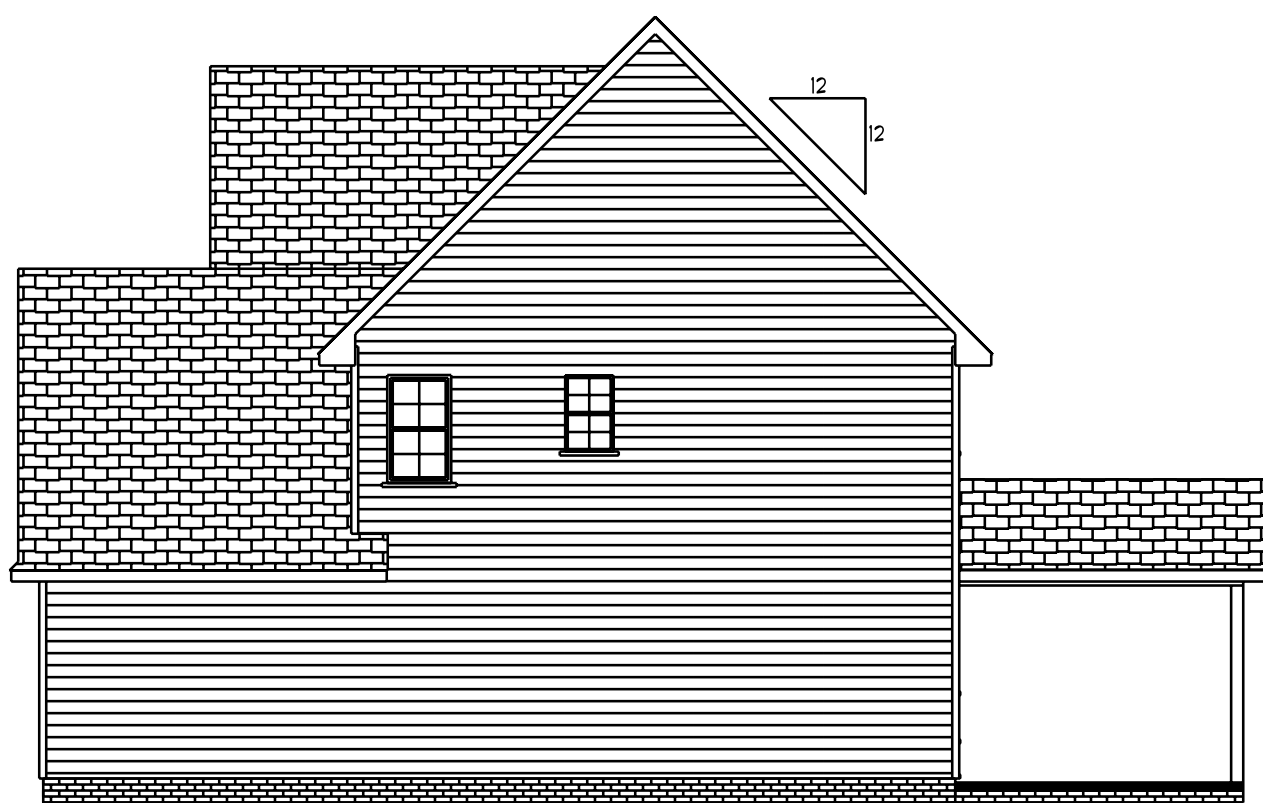




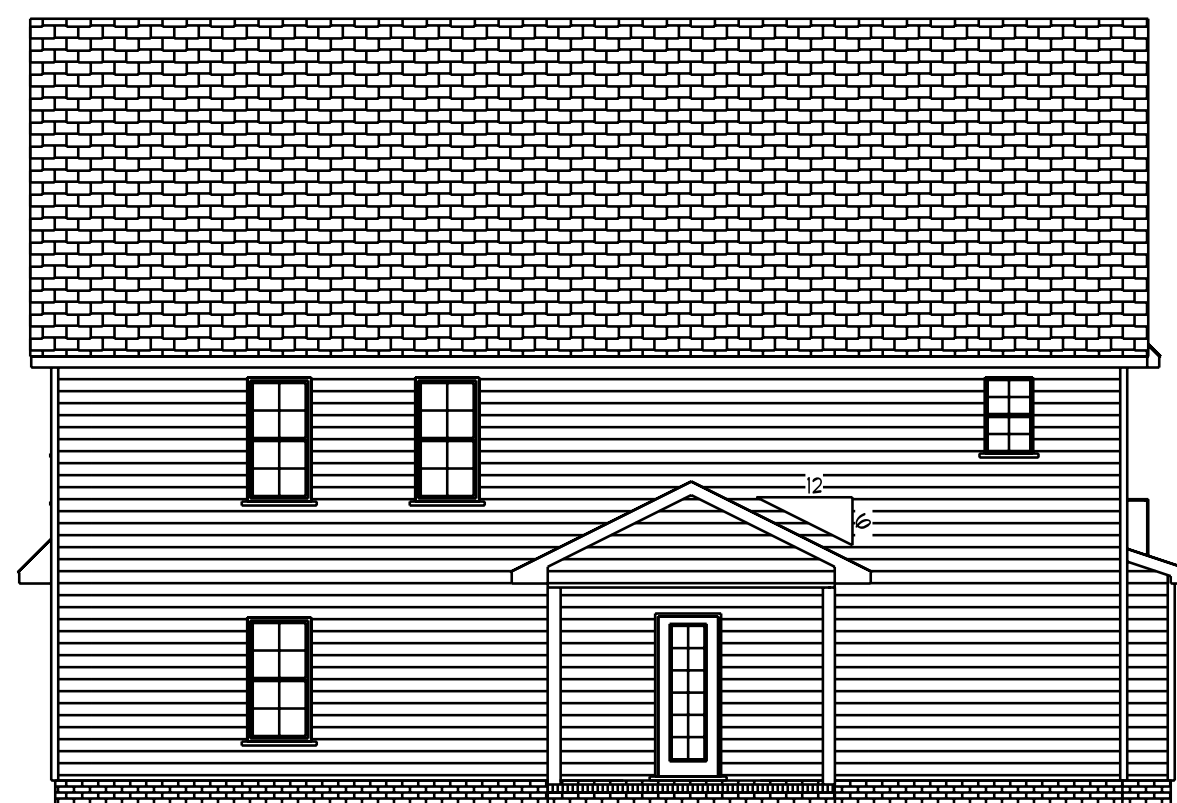
Front Elevation  
Scale: 1/4" = 1'0"



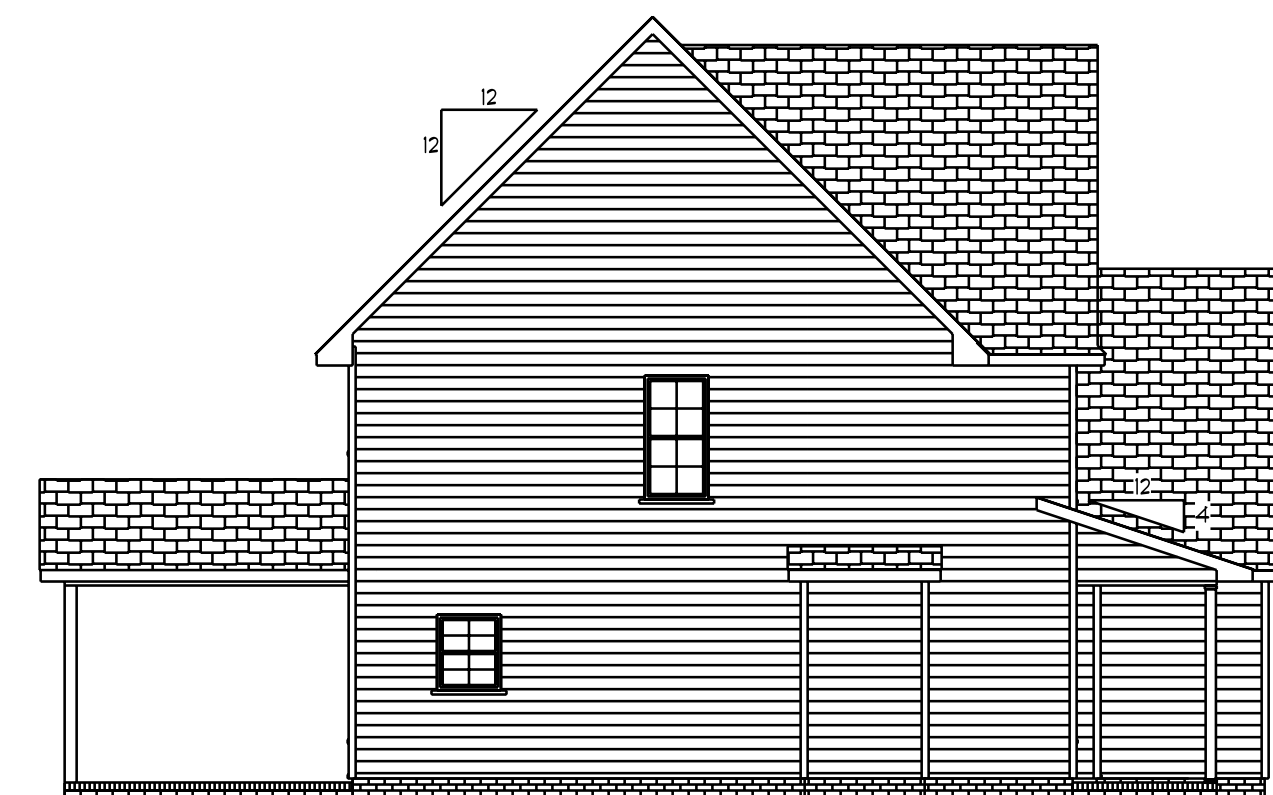
Optional  
3rd Garage



Right Elevation  
Scale: 1/8" = 1'0"



Rear Elevation  
Scale: 1/8" = 1'0"

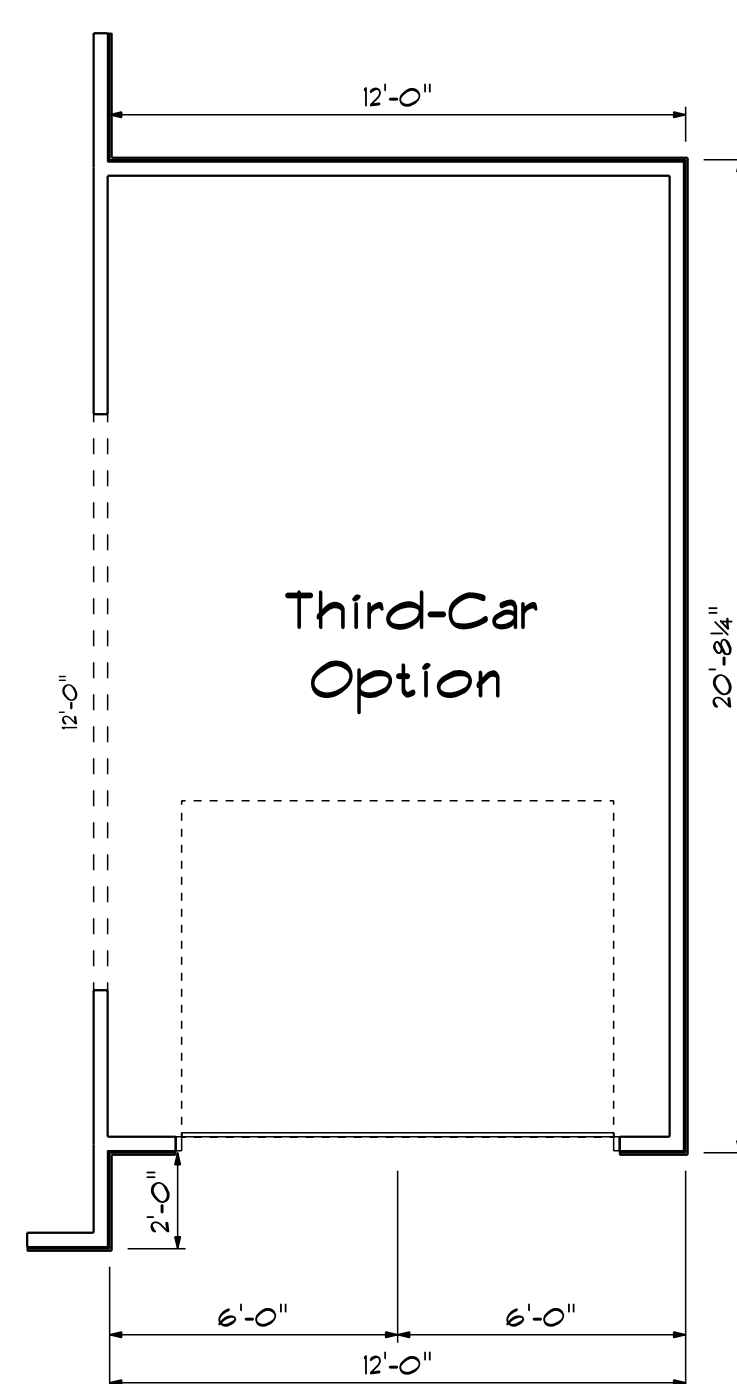
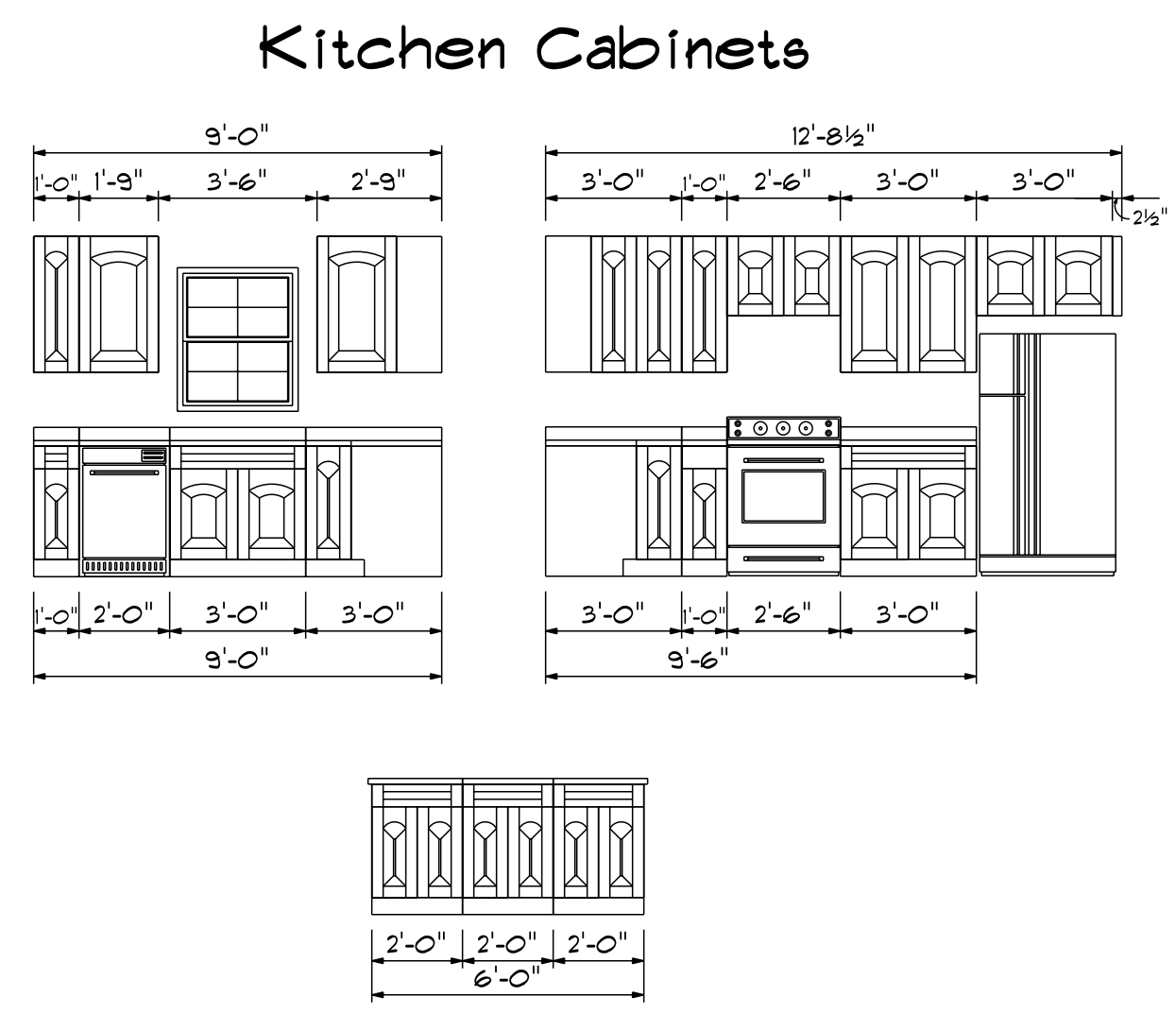
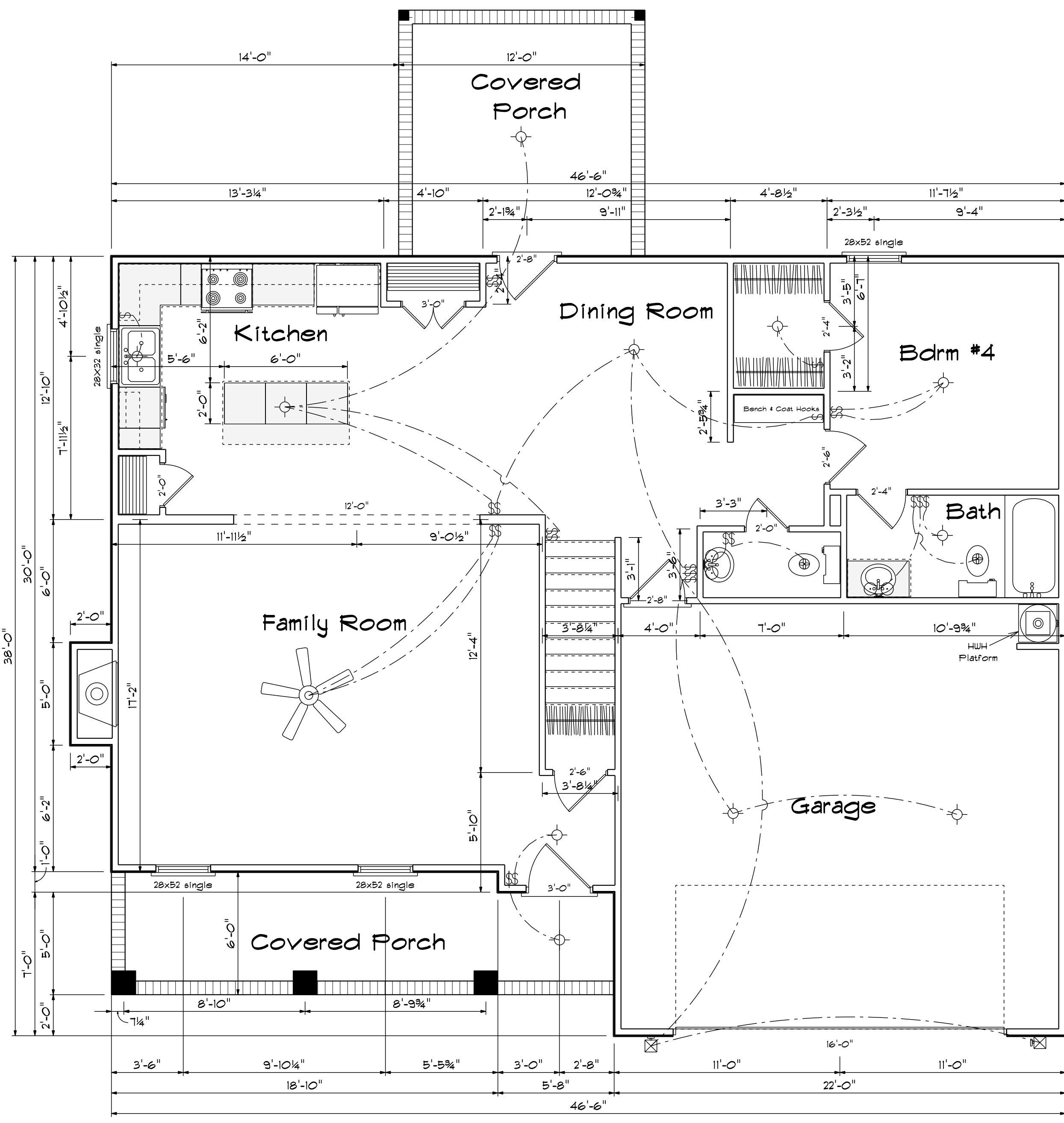


Left Elevation  
Scale: 1/8" = 1'0"

DATE: 1/1/2021  
REVISED  
DRAWING#

SCALE: 1/4"  
DRAWN BY  
APPROVED

Charlotte



| FIRST FLOOR OPENING SCHEDULE |               |       |       |
|------------------------------|---------------|-------|-------|
| PRODUCT CODE                 | SIZE          | HINGE | COUNT |
| 36X80 COLONIAL A 1           | 3'-0"         | R     | 1     |
| 60X80 FRENCH A 2             | 5'-0"         | RN    | 1     |
| 192X84 - 8 PANEL - 4 WINDOW  | 16'-0"        | U     | 1     |
| 2-4 Door Unit                | 2'-4"         | R     | 1     |
| 2-4 Door Unit                | 2'-4"         | L     | 1     |
| 2-6 Door Unit                | 2'-6"         | R     | 2     |
| 2-8 Door Unit                | 2'-8"         | L     | 1     |
| 3-0 Doublehung Door Unit     | 3'-0"         | LR    | 1     |
| 20 pocket                    | 2'-0"         | N     | 1     |
| 28X32 single                 | 2'-8" x 3'-2" | N     | 1     |
| 28x52 single                 | 2'-8" x 5'-2" | N     | 1     |
| 28x52 triple                 | 8'-0" x 5'-2" | NA    | 1     |

| Areas           |      |
|-----------------|------|
| First Floor     | 1123 |
| Second Floor    | 1404 |
| =====           |      |
| Total Heated    | 2527 |
| Garage          | 461  |
| Front Porch     | 128  |
| Covered Porch   | 144  |
| Optionag Garage | 257  |

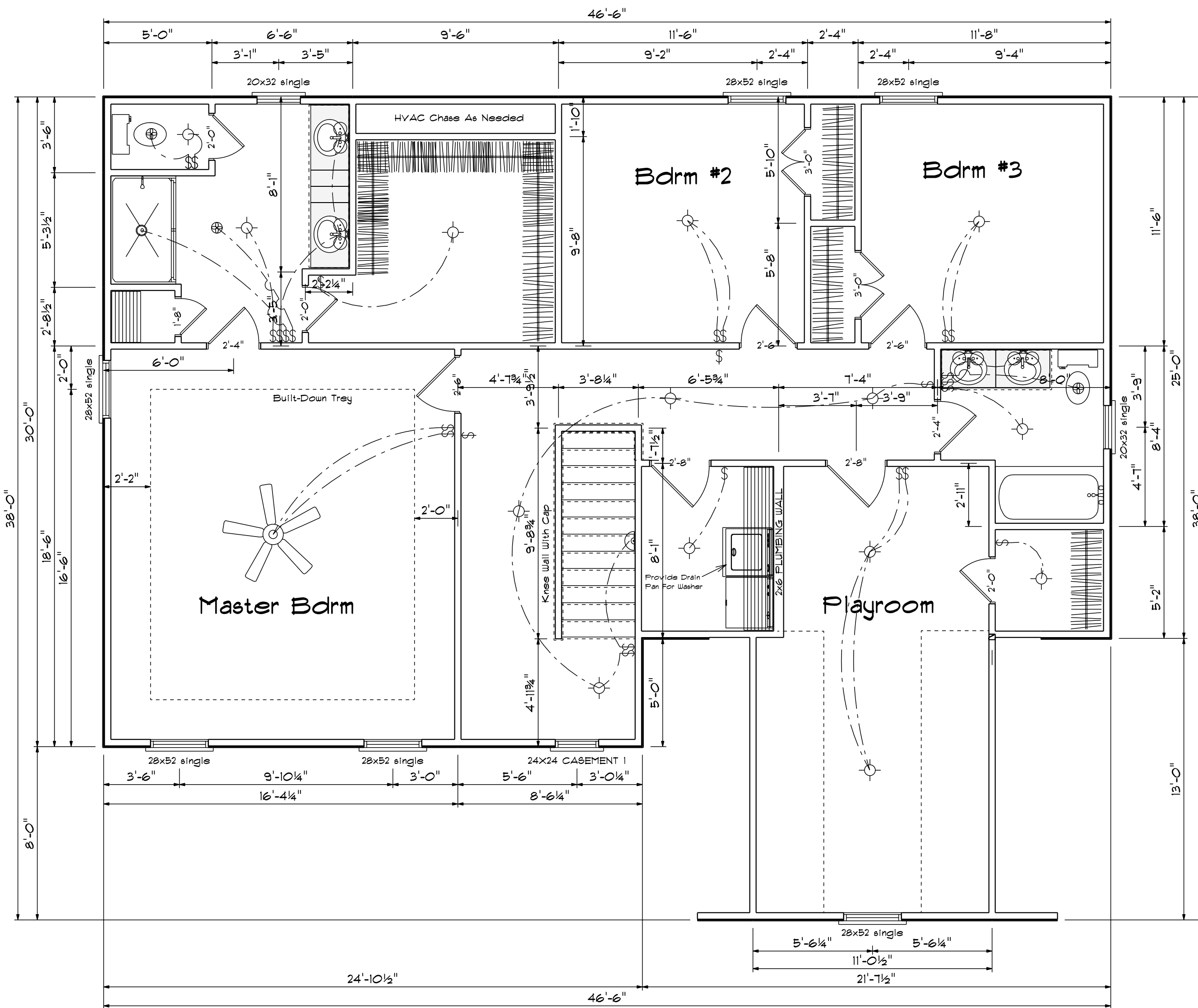
### First Floor Plan

Scale: 1/4" = 1'-0"

DATE: 1/1/2021  
 REVISIONS  
 DRAWING#

SCALE: 1/4"  
 DRAWN BY  
 APPROVED

Charlotte



## Second Floor Plan

Scale: 1/4" = 1'-0"

| SECOND FLOOR OPENING SCHEDULE |               |       |       |
|-------------------------------|---------------|-------|-------|
| PRODUCT CODE                  | SIZE          | HINGE | COUNT |
| 1-6 Door Unit                 | 1'-4"         | R     | 1     |
| 2-0 Door Unit                 | 2'-0"         | R     | 1     |
| 2-4 Door Unit                 | 2'-4"         | R     | 1     |
| 2-4 Door Unit                 | 2'-4"         | L     | 2     |
| 2-6 Door Unit                 | 2'-6"         | R     | 2     |
| 2-6 Door Unit                 | 2'-6"         | L     | 1     |
| 2-8 Door Unit                 | 2'-8"         | R     | 2     |
| 3-0 Doublehung Door Unit      | 3'-0"         | LR    | 2     |
| 20x32 single                  | 2'-0" x 3'-2" | N     | 2     |
| 28x52 single                  | 2'-8" x 5'-2" | N     | 5     |
| 28x52 triple                  | 8'-0" x 5'-2" | NA    | 1     |

DATE: 1/1/2021

REVISED

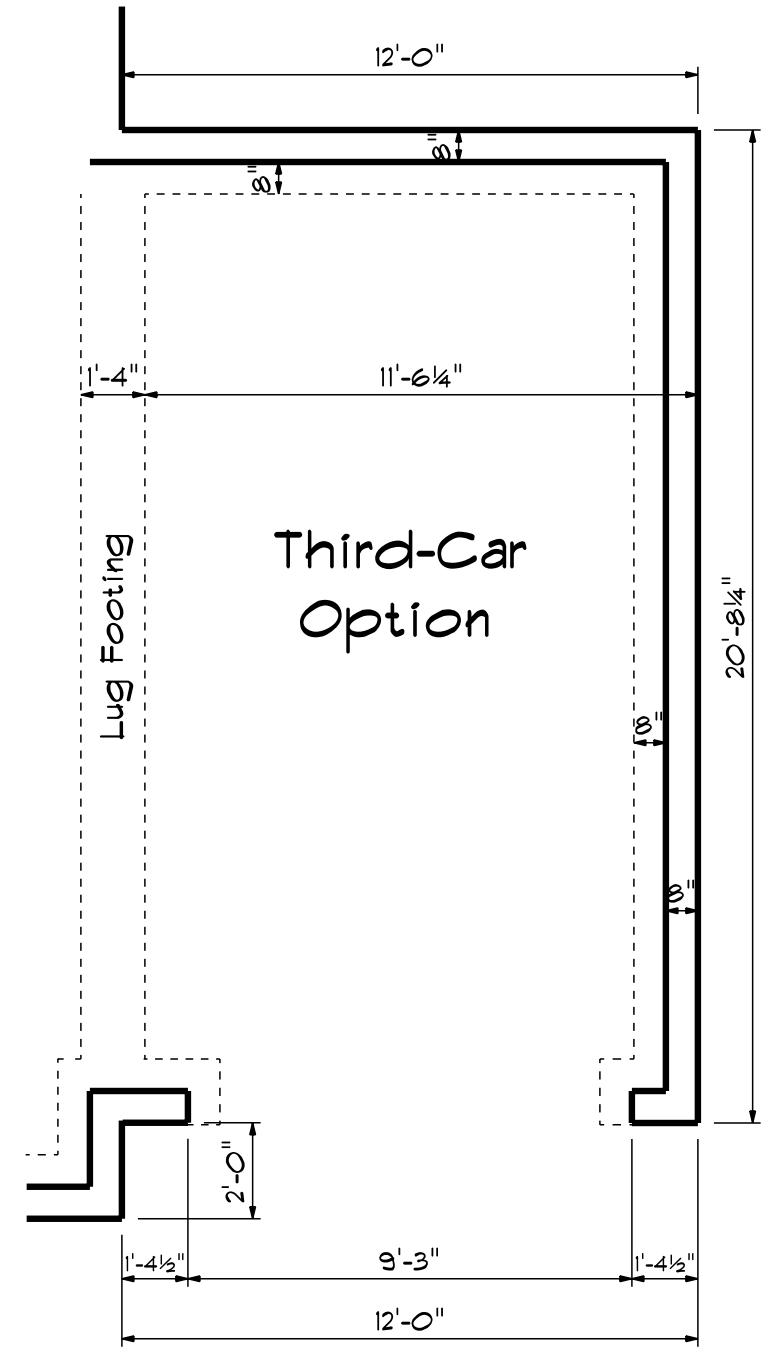
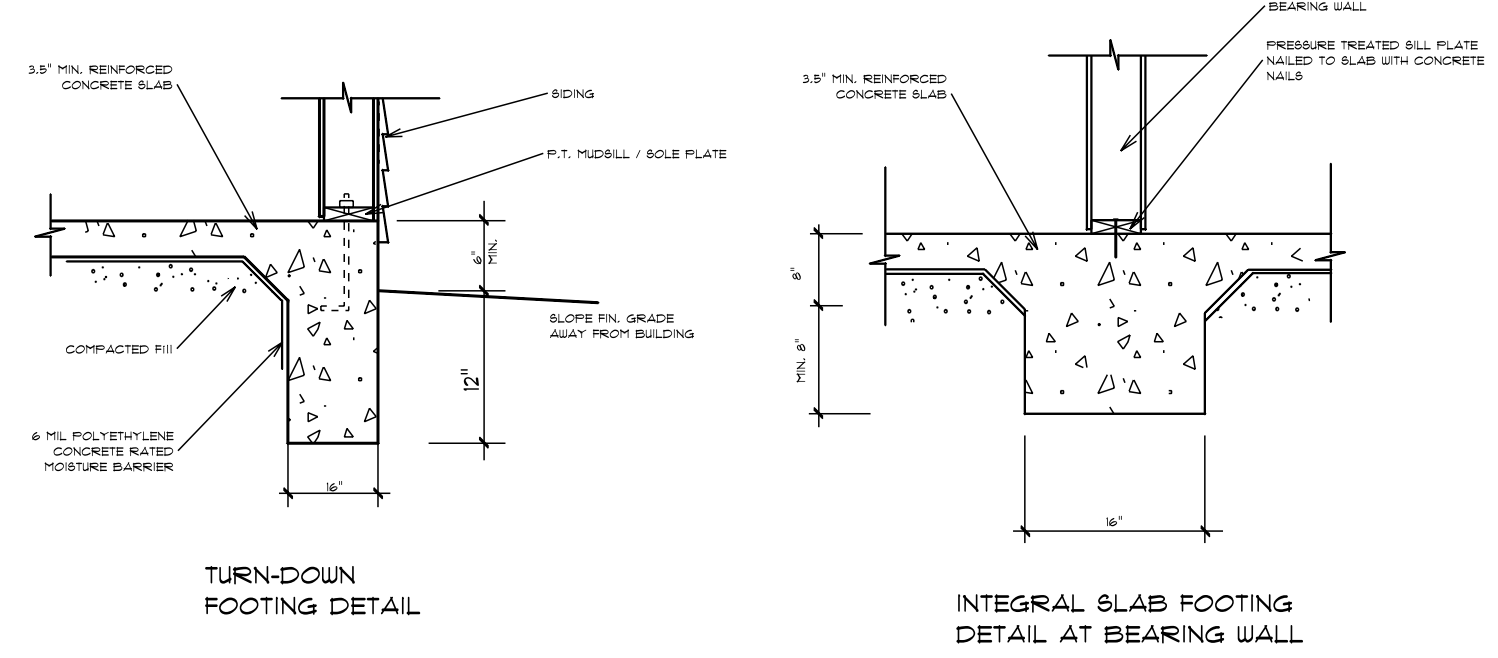
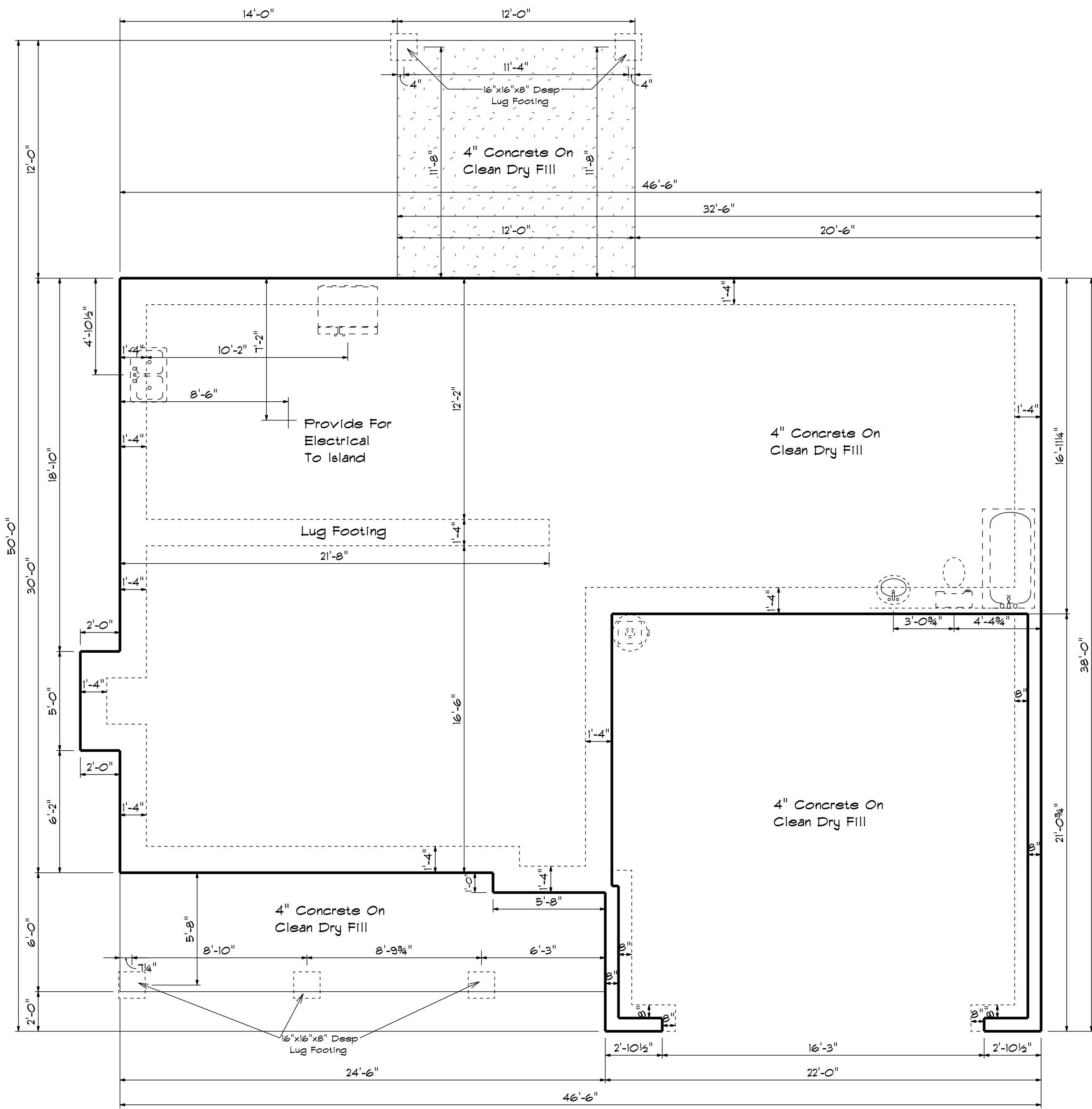
DRAWING#

SCALE: 1/4"

DRAWN BY

APPROVED

Charlotte



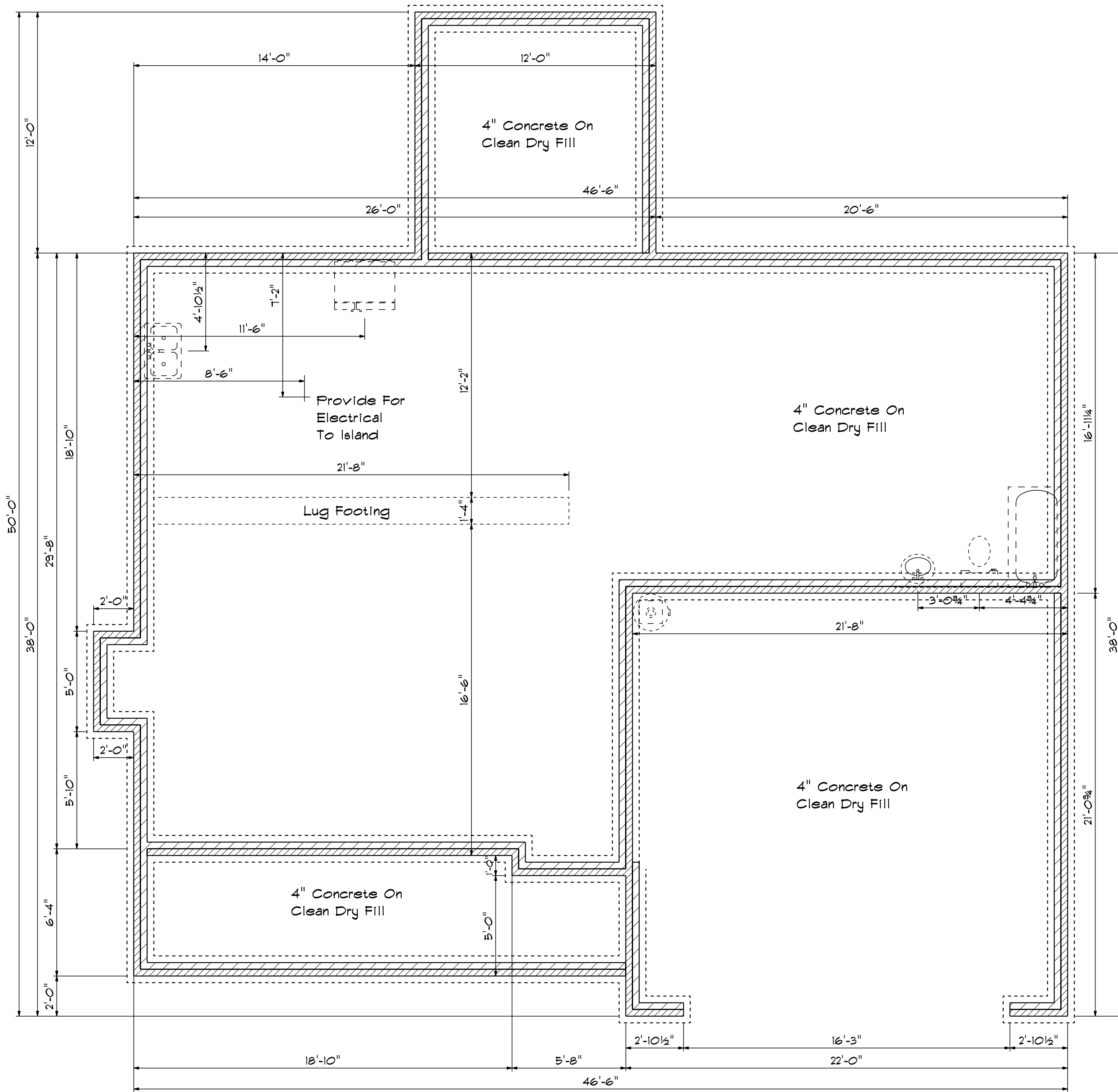
# Foundation Plan

Scale: 1/4" = 1'-0"

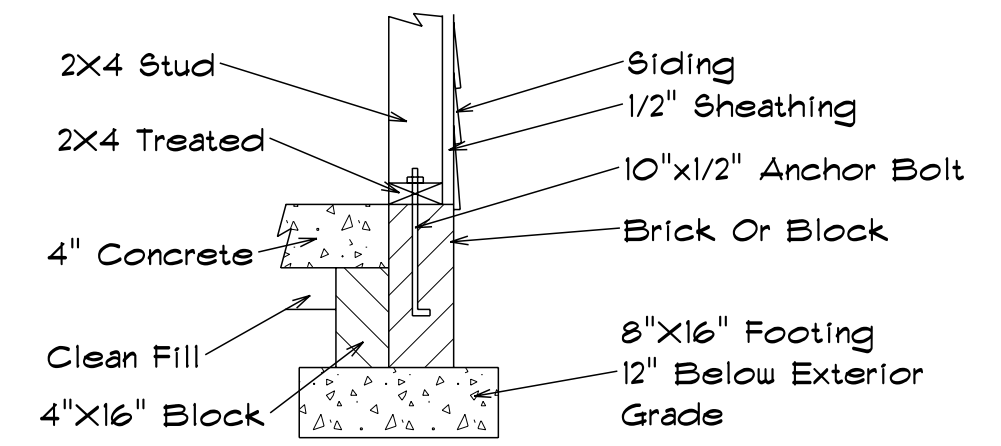
DATE: 1/11/2021  
REVISED  
DRAWING#

SCALE: 1/4"  
DRAWN BY  
APPROVED

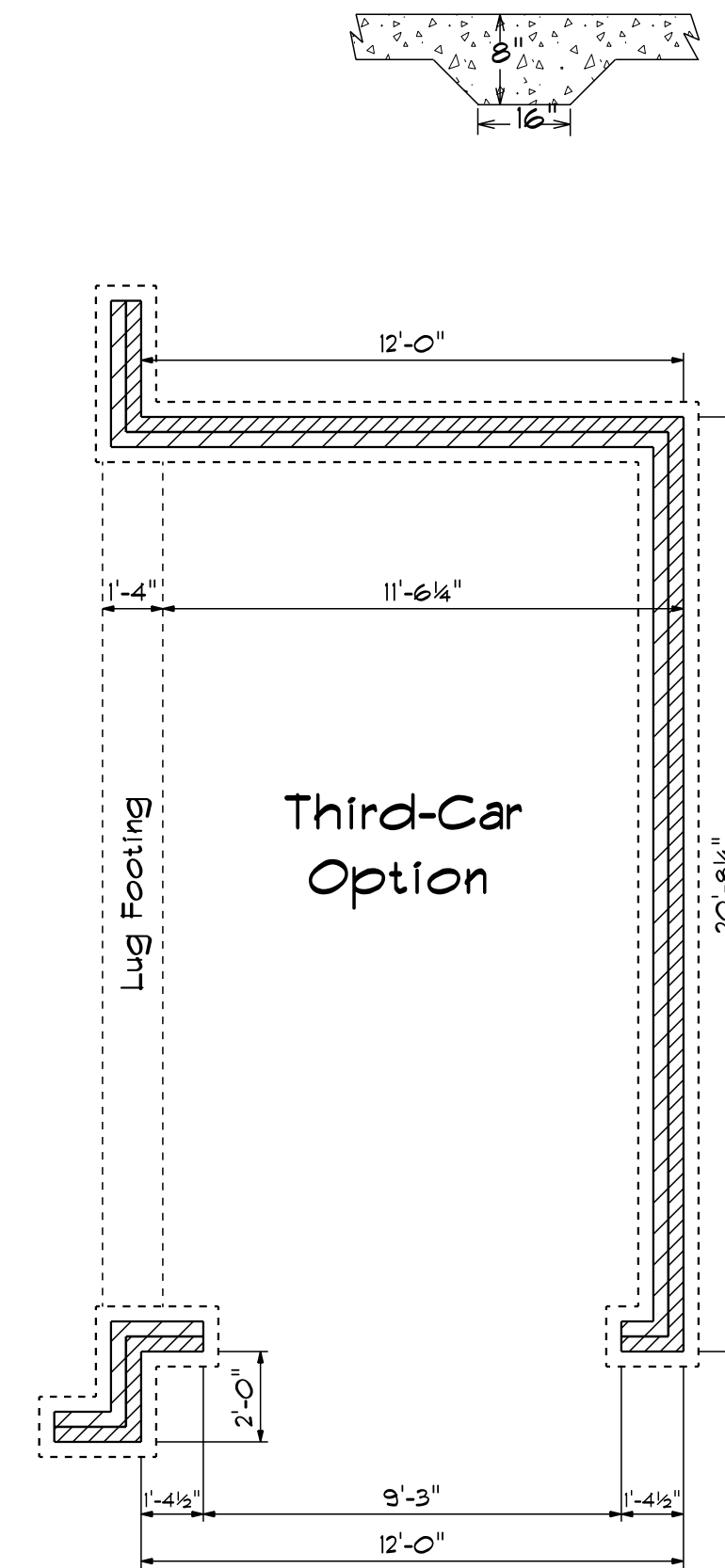
Charlotte



### Foundation Detail Siding



### Lug Footing Detail



DATE: 1/1/2021  
REVISED  
DRAWING#

SCALE: 1/4"  
DRAWN BY  
APPROVED

Charlotte