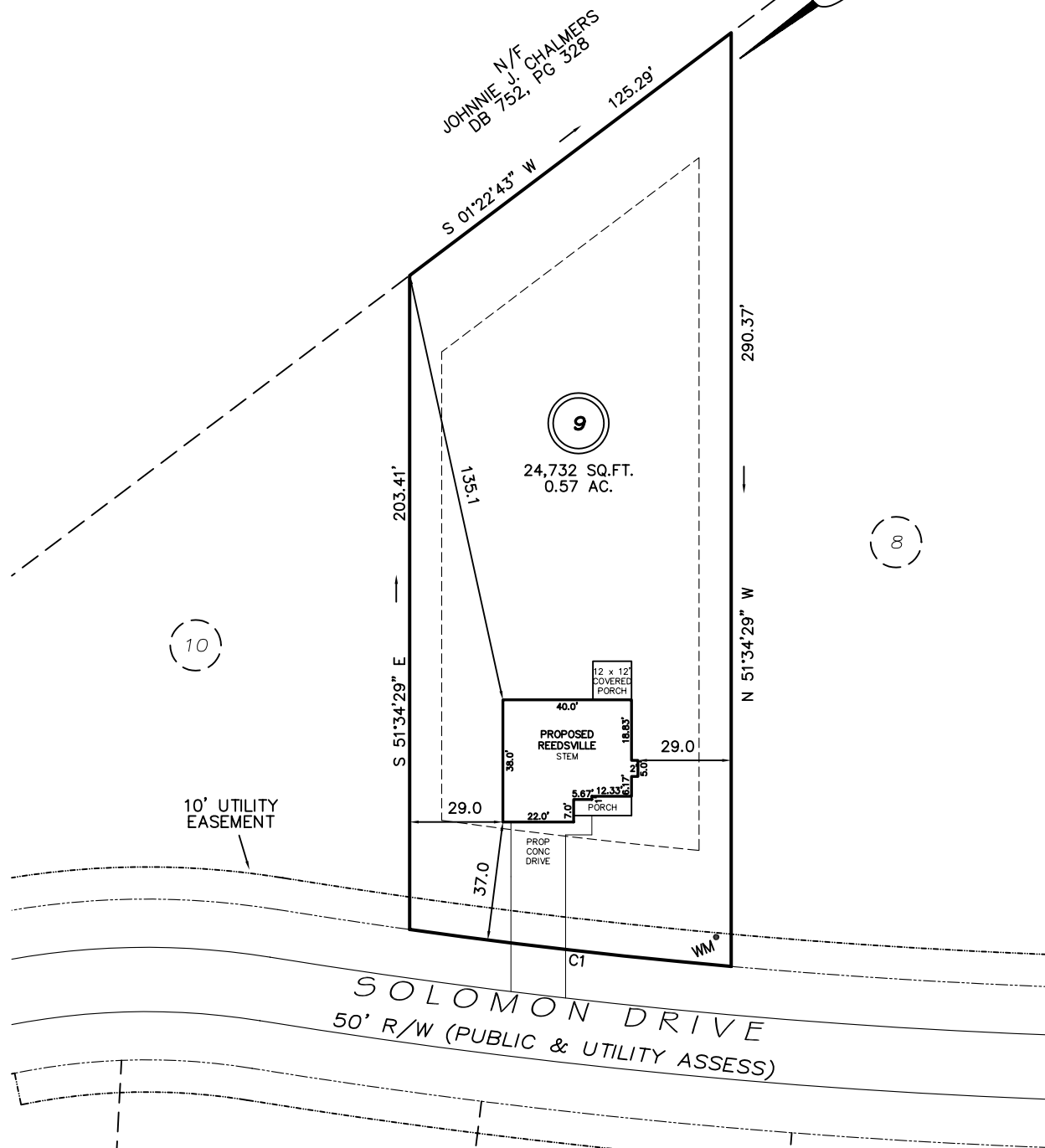


I, MICHAEL P. GRIFFIN, certify that under my direction and supervision this map was drawn from an actual field survey; that the error of closure of the survey as calculated by coordinates is 1: 10,000+; that the area shown hereon was calculated by coordinates.

Witness my hand and seal this day of MONTH 2022.

PLM 2022 PGS 341-344
HARNETT CO. REGISTRY



10' UTILITY EASEMENT

SOLOMON DRIVE
50' R/W (PUBLIC & UTILITY ASSESS)

IMPERVIOUS AREAS

HOUSE	1,638 SQ. FT.
DRIVE & WALKS	701 SQ. FT.
PATIO	0 SQ. FT.
TOTAL	2,339 SQ. FT.
ALLOWED	11,082 SQ. FT.

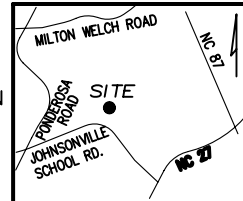
C1 R=1975.00' L=100.67' N44°58'09\"/>

SETBACKS

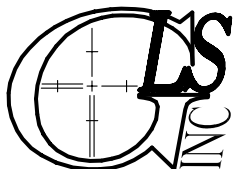
FRONT	35'
REAR	25'
SIDE	10'
CORNER SIDE	20'

LEGEND

EIP	EXISTING IRON PIPE	FES	FLARED END SECTION
IPS	IRON PIPE SET	WM	WATER METER
R/W	RIGHT OF WAY	CO	CLEAN OUT
N/F	NOW OR FORMERLY	FH	FIRE HYDRANT
EIS	EXISTING IRON STAKE	CB	CATCH BASIN



P R E L I M I N A R Y
NOT FOR RECORDATION,
SALES OR CONVEYANCE



GRIFFIN LAND SURVEYING, INC.

P. O. BOX 148
FUQUAY-VARINA, NC 27526
(919) - 567 - 1963

PLOT PLAN
FOR
BEN STOUT
CONSTRUCTION
LIBERTY MEADOWS

LOT 9
SOLOMAN DRIVE
PINEVIEW, N.C.

HARNETT COUNTY JOHNSONVILLE TOWNSHIP

DRAWN BY KDF

DATE 7/25/22

CHECKED BY MPG

SCALE 1" = 50'