

General Notes:

- Per ANSI/TPI 1-2002 all " Truss to Wall" connections are the responsibility of the Building Designer, not the Truss Manufacturer.
- Dimensions are Feet-Inches- Sixteenths.
- Trusses are to be 24" o.c. unless noted otherwise (U.N.O.)
- Trusses are not designed to support brick U.N.O.
- Do not cut or modify trusses without first contacting Builders FirstSource.
- Immediately contact Builders FirstSource if trusses are damaged.

Connection Notes:

- All hangers are to be Simpson or equivalent U.N.O.
- Use Manufacturer's specifications for all hanger connections U.N.O.
- Use 10d x 1 1/2" Nails in hanger connections to single ply roof girder trusses.

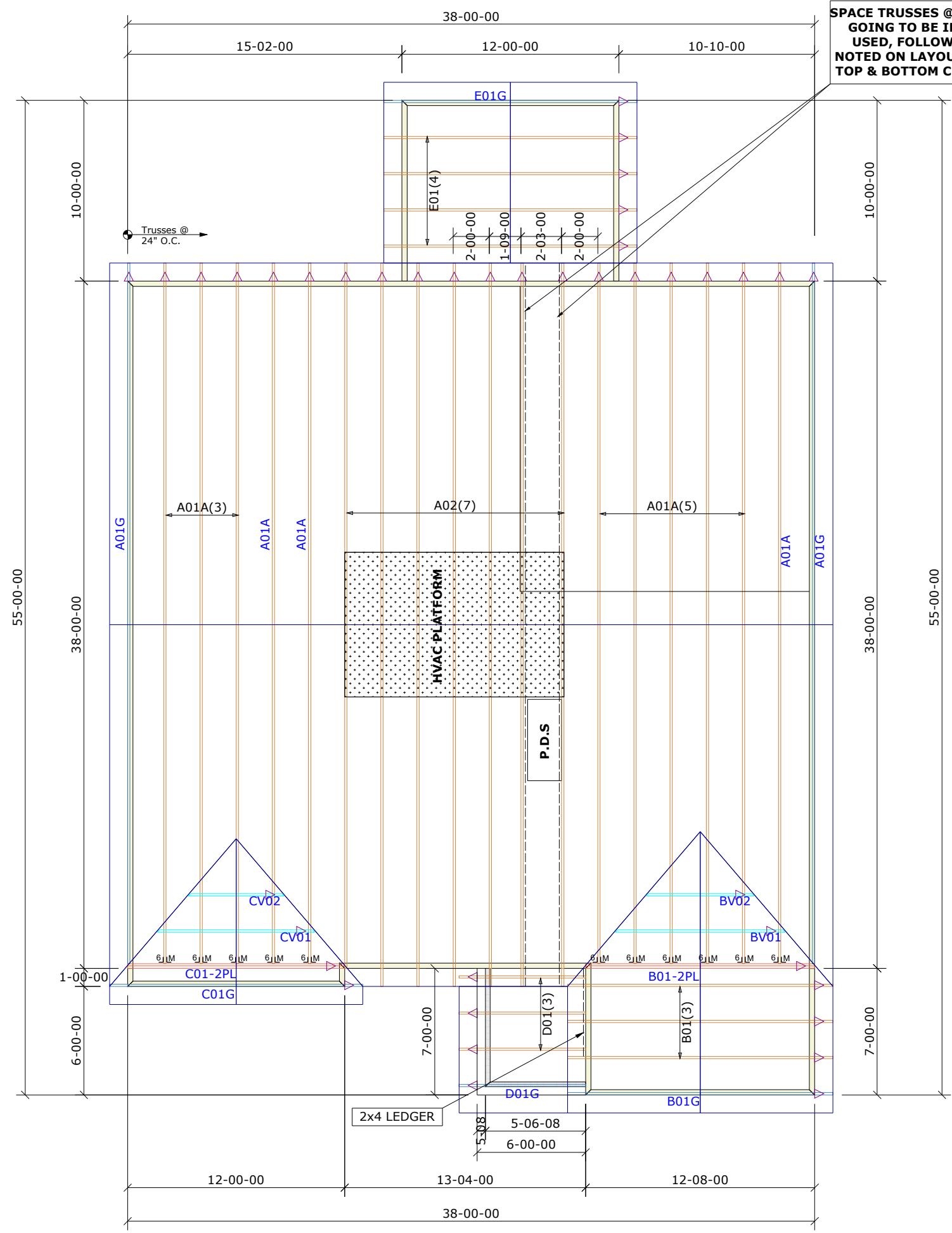
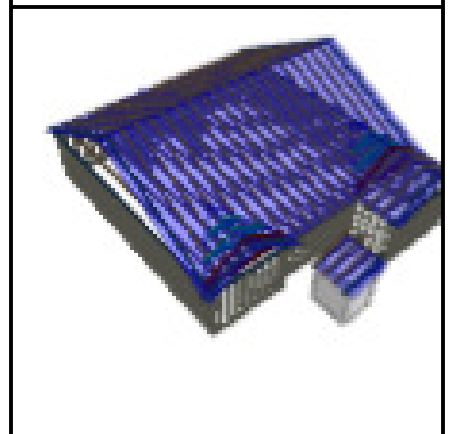
Floor notes:

- Shift truss as required to avoid plumbing traps.
- Installation Contractor and/or Field Supervisor are to verify all dimensions, trap locations, and options prior to installation

Dimension Notes:

- Drawing not to scale. Do not scale dimensions

◁ ▷ ▷ ▷ LEFT END OF TRUSS AS SHOWN ON TRUSS DETAIL DRAWINGS ARE INDICATED BY TRIANGLE ICONS.



SPACE TRUSSES @ 2' O.C. UNLESS A WIDE P.D.S IS GOING TO BE INSTALLED. IF A WIDE P.D.S IS USED, FOLLOW SPECIAL TRUSS SPACING AS NOTED ON LAYOUT, AND ATTACH 2X4 LEDGER TO TOP & BOTTOM CHORDS W/12d NAILS @ 16" O.C.

HANGER LIST		ALL TIE DOWNS H2.5A UNLESS NOTED	
11	HTU26	Mj	16
SPECIAL ITEMS LIST			
MISC MATERIAL			
MATTAMY HOMES			
SHENANDOAH	ELEV:	FARMHOUSE	
PROVIDENCE CREEK			
---	NC	LOT:	102
APPWRIGHT #			
3247439			
• OPTIONAL SUNROOM		CODE:	IRC 2015
• GARAGE LEFT		LOADING:	
		T.C.L.L.	20 PSF
DESIGNED BY:	ABS	T.C.D.L.	10 PSF
LAYOUT:	---	B.C.L.L.	0 PSF
L/O DATE:	8/4/2022	B.C.D.L.	10 PSF
REVISION HISTORY		WIND:	
REV1:	XX/XX/XX	M.P.H.	115 MPH
REV2:	XX/XX/XX	EXPOSURE CATEGORY	
REV3:	XX/XX/XX	B (WOODED AREAS/OTHERS)	
PICK TICKET:	---	JOB NO.:	---
SALES NO.:	---	ACCT NO.:	---

HATCH LEGEND	
	ATTIC ROOM
	VOLUME CEILING
	STICK FRAMING