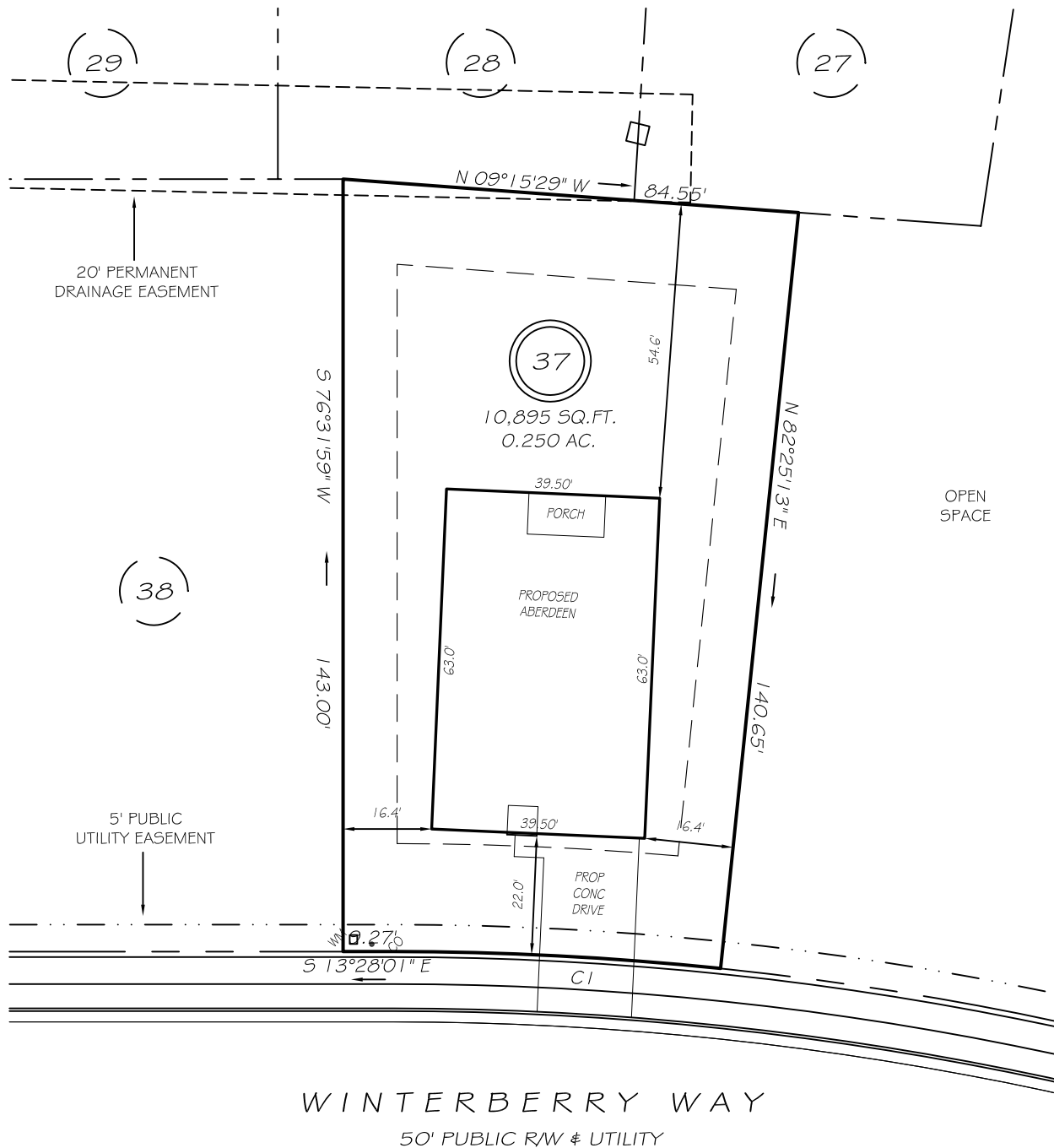
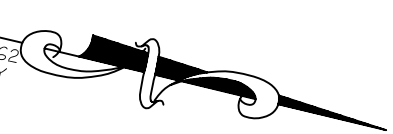


I, MICHAEL P. GRIFFIN, certify that under my direction and supervision this map was drawn from an actual field survey; that the error of closure of the survey as calculated by coordinates is 1: 10,000+; that the area shown hereon was calculated by coordinates.

Witness my hand and seal this day of MONTH 2022.

BM 2022 PG5 156-162
HARNETT CO. REGISTRY



IMPERVIOUS AREAS

HOUSE	2489 SQ. FT.
DRIVE & WALKS	423 SQ. FT.
PATIO	000 SQ. FT.
TOTAL	2912 SQ. FT.
ALLOWED	3000 SQ. FT.

SETBACKS

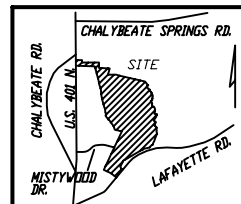
FRONT	20'
REAR	15'
SIDE	10'
CORNER SIDE	15'

CI R=591.00' L=60.73' S10°31'24"E 60.70'

PRELIMINARY
NOT FOR RECORDATION,
SALES OR CONVEYANCE

LEGEND

EIP	EXISTING IRON PIPE	FES	FLARED END SECTION
IPS	IRON PIPE SET	WM	WATER METER
R/W	RIGHT OF WAY	CO	CLEAN OUT
N/F	NOW OR FORMERLY	FH	FIRE HYDRANT
EIS	EXISTING IRON STAKE	CB	CATCH BASIN



GRIFFIN LAND SURVEYING, INC.

P. O. BOX 148
FUQUAY-VARINA, NC 27526
(919) - 567 - 1963

PLOT PLAN
FOR

D. R. HORTON

WOODGROVE
LOT 37

WINTERBERRY WAY
NORTH CAROLINA

HARNETT CO. HECTOR'S CREEK TWSHP

DRAWN BY **NMF**

DATE **5/13/22**

CHECKED BY **MPG**

SCALE **1" = 30'**