

COMMENTS: _____

LANDSCAPE POSITIONS	GROUP	TEXTURES	.1955 LTAR	CONSISTENCE MOIST	WET	
R-RIDGE	I	S-SAND	1.2 - 0.8	VFR-VERY FRIABLE	NS-NON-STICKY	
S-SHOULDER SLOPE		LS-LOAMY SAND				FR-FRIABLE
L-LINEAR SLOPE	II	SL-SANDY LOAM	0.8 - 0.6	FI-FIRM	S-STICKY	
FS-FOOT SLOPE		L-LOAM				VFI-VERY FIRM
N-NOSE SLOPE	III	SI-SILT	0.6 - 0.3	EFI-EXTREMELY FIRM	NP-NON-PLASTIC	
H-HEAD SLOPE		SIL-SILT LOAM				SP-SLIGHTLY STICKY
CC-CONCLAVE SLOPE		CL-CLAY LOAM				P-PLASTIC
CV-CONVEX SLOPE		SCL-SANDY CLAY LOAM				VP-VERY PLASTIC
T-TERRACE	IV	SIC-SILTY CLAY	0.4 - 0.1			
FP-FLOOD PLAN		C-CLAY				
		SC-SANDY CLAY				

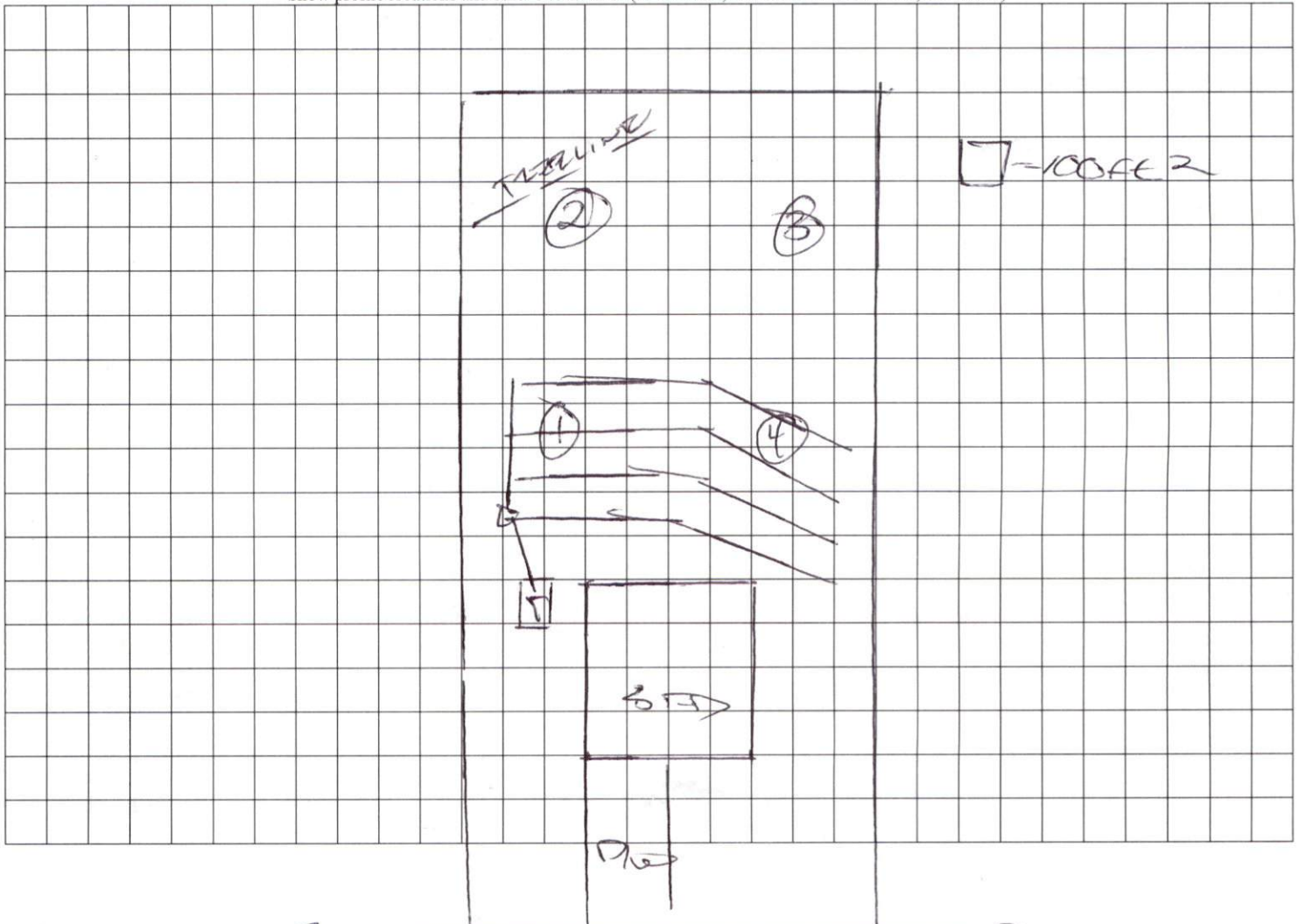
STRUCTURE

- SG-SINGLE GRAIN
- M- MASSIVE
- CR-CRUMB
- GR-GRANULAR
- SBK-SUBANGULAR BLOCKY
- ABK-ANGULAR BLOCKY
- PL-PLATY
- PR-PRISMATIC

MINERALOGY

- SLIGHTLY EXPANSIVE
- EXPANSIVE

Show profile locations and other site features (dimensions, references or benchmark, and North)



MARK ROBERTSON ST.