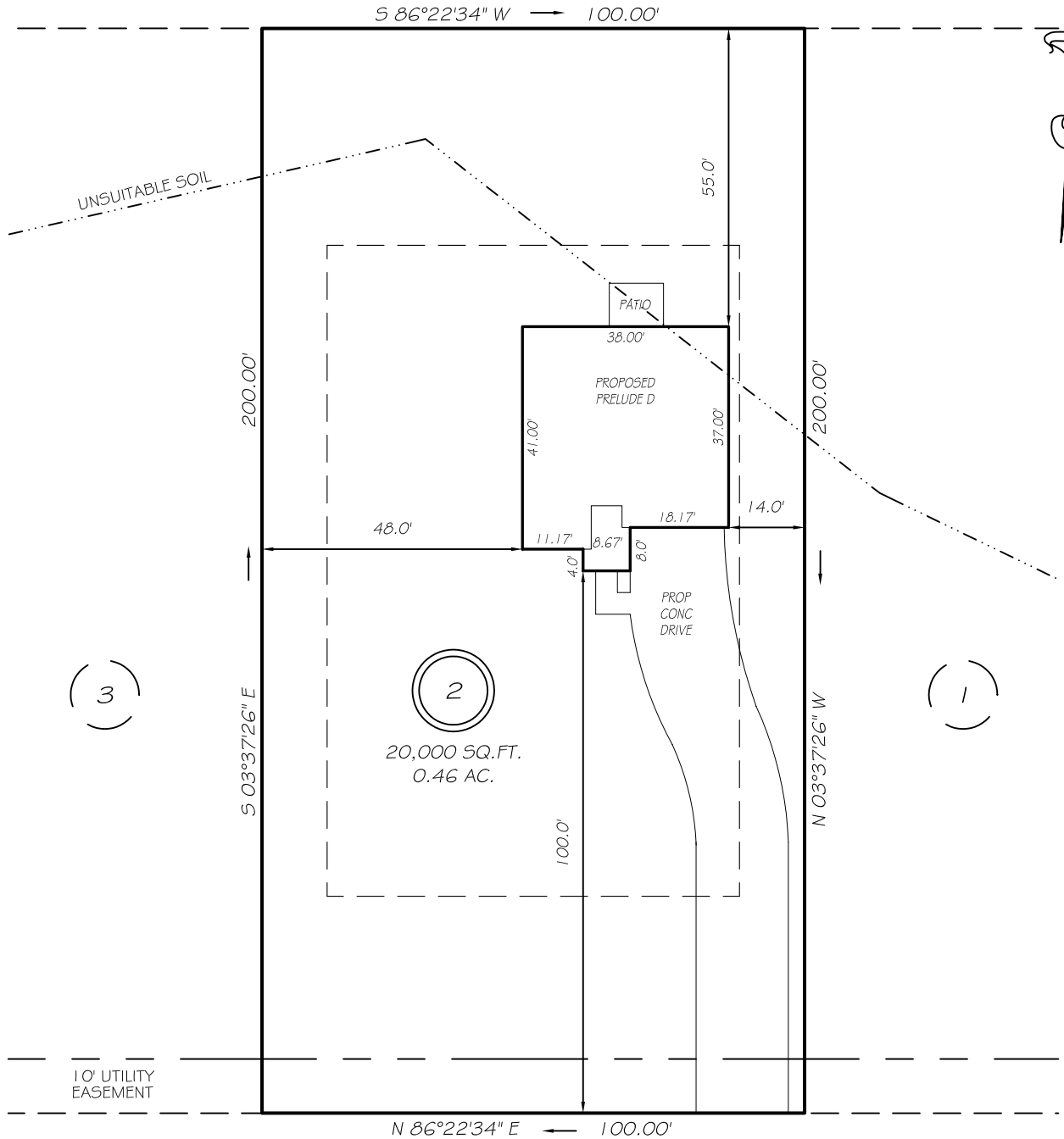


I, MICHAEL P. GRIFFIN, certify that under my direction and supervision this map was drawn from an actual field survey; that the error of closure of the survey as calculated by coordinates is 1: 10,000+; that the area shown hereon was calculated by coordinates.

Witness my hand and seal this day of MONTH 2022.

BK 2022 PAGE 226-227
HARNETT CO., REGISTRY

N/F
STOUT LAND DEVELOPMENT, LLC
DB 4060 PG 443



BETTY ANN STREET
50' RW (PUBLIC & UTILITY ACCESS)

SETBACKS

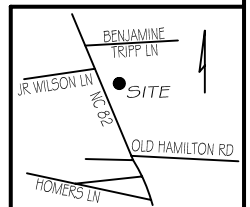
FRONT	40'
REAR	40'
SIDE	12'

REVISION: MOVE BACK 8/25/22

PRELIMINARY
NOT FOR RECORDATION,
SALES OR CONVEYANCE

LEGEND

EIP	EXISTING IRON PIPE	FES	FLARED END SECTION
IPS	IRON PIPE SET	WM	WATER METER
R/W	RIGHT OF WAY	CO	CLEAN OUT
N/F	NOW OR FORMERLY	FH	FIRE HYDRANT
EIS	EXISTING IRON STAKE	CB	CATCH BASIN



GRIFFIN LAND SURVEYING, INC.

P. O. BOX 148
FUQUAY-VARINA, NC 27526
(919) - 567 - 1963

PLOT PLAN
FOR

H & H HOMES

SCHABERT CROSSING SUBDIVISION

LOT 2

48 BETTY ANN STREET

ERWIN, N.C.

HARNETT COUNTY DUKE TOWNSHIP

DRAWN BY KDF

DATE 7/11/22

CHECKED BY MPG

SCALE 1" = 30'