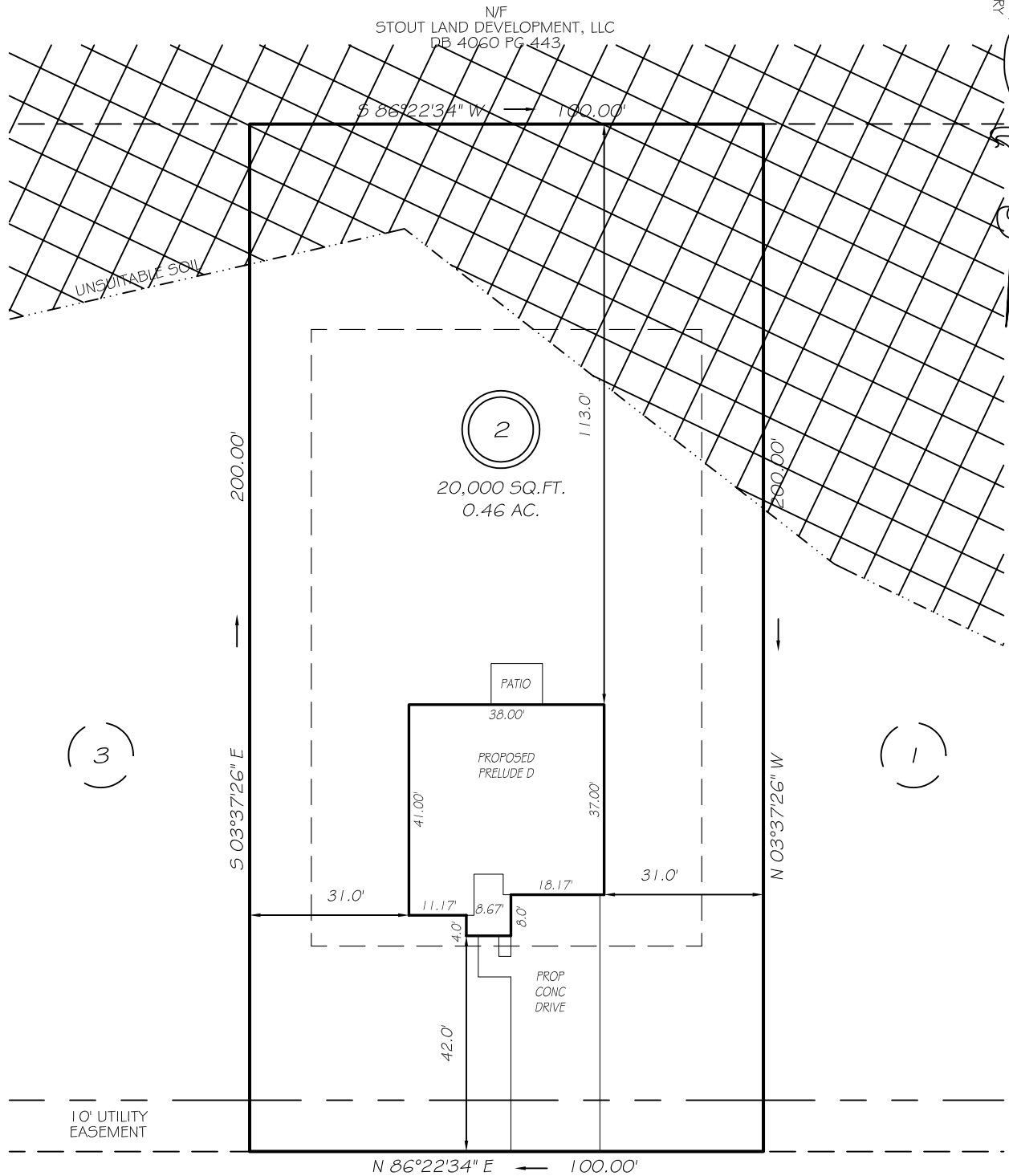


I, MICHAEL P. GRIFFIN, certify that under my direction and supervision this map was drawn from an actual field survey; that the error of closure of the survey as calculated by coordinates is 1: 10,000+; and that the area shown hereon was calculated by coordinates.

Witness my hand and seal this day of MONTH 2022.

BK 2022 PAGE 226-227
HARNETT CO. REGISTRY



BETTY ANN STREET
50' RW (PUBLIC & UTILITY ACCESS)

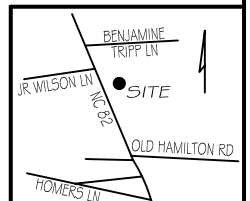
SETBACKS

FRONT	40'
REAR	40'
SIDE	12'

PRELIMINARY
NOT FOR RECORDATION,
SALES OR CONVEYANCE

LEGEND

EIP	EXISTING IRON PIPE	FES	FLARED END SECTION
IPS	IRON PIPE SET	WM	WATER METER
R/W	RIGHT OF WAY	CO	CLEAN OUT
N/F	NOW OR FORMERLY	FH	FIRE HYDRANT
EIS	EXISTING IRON STAKE	CB	CATCH BASIN



GRIFFIN LAND SURVEYING, INC.

P. O. BOX 148
FUQUAY-VARINA, NC 27526
(919) - 567 - 1963

PLOT PLAN
FOR

H & H HOMES

SCHABERT CROSSING SUBDIVISION

LOT 2

48 BETTY ANN STREET

ERWIN, N.C.

HARNETT COUNTY

DUKE TOWNSHIP

DRAWN BY KDF

DATE 7/11/22

CHECKED BY MPG

SCALE 1" = 30'