

THIS LAYOUT IS TO BE USED AS A TRUSS PLACEMENT GUIDE ONLY.  
PLEASE REFER TO BUILDING PLANS FOR BUILDING CONSTRUCTION AND DETAILS,  
SUCH AS PLUMBING OR DUCT DROPS.

CONSTRUCTION COPY-  
FOR FIELD USE

Job #  
**P-8923**

21 Chartres St  
21 Chartres St  
Fuquay Varina NC

- Notes:
- Exterior dimensions shown are assumed to be:
    - ☐ Out-to-out of stud
    - ☒ Out-to-out of sheathing
  - Adjust truss locations as needed for plumbing and mechanical clearance. Unless otherwise noted, trusses may be shifted as long as O.C. spacing shown is not exceeded.
  - Do not cut, drill, or otherwise damage any part of any truss without prior approval from Peak Truss. Do not install trusses that are damaged, are not properly fabricated, or do not have adequate bearing.
  - Do not approve drawings if any information herein is unclear. Once ordered trusses will be fabricated as approved.
  - Please contact Peak Truss Builders with any questions. We are available to help any way we can. We can be reached at 919-545-5555 or sales@peaktruss.com

Roof Truss Loading per 2018 NC Residential Code

Top Chord Live Load	20# PSF
Top Chord Dead Load	10# PSF
Bottom Chord Live Load	0# PSF
Bottom Chord Dead Load	10# PSF

Trusses are designed for additional storage load wherever a 42"x24" box will fit between the webs.

△ - This symbol denotes left end of truss as shown on truss drawings

● - Approximate location of toilet drop. Builder please confirm.

Truss connections by others:

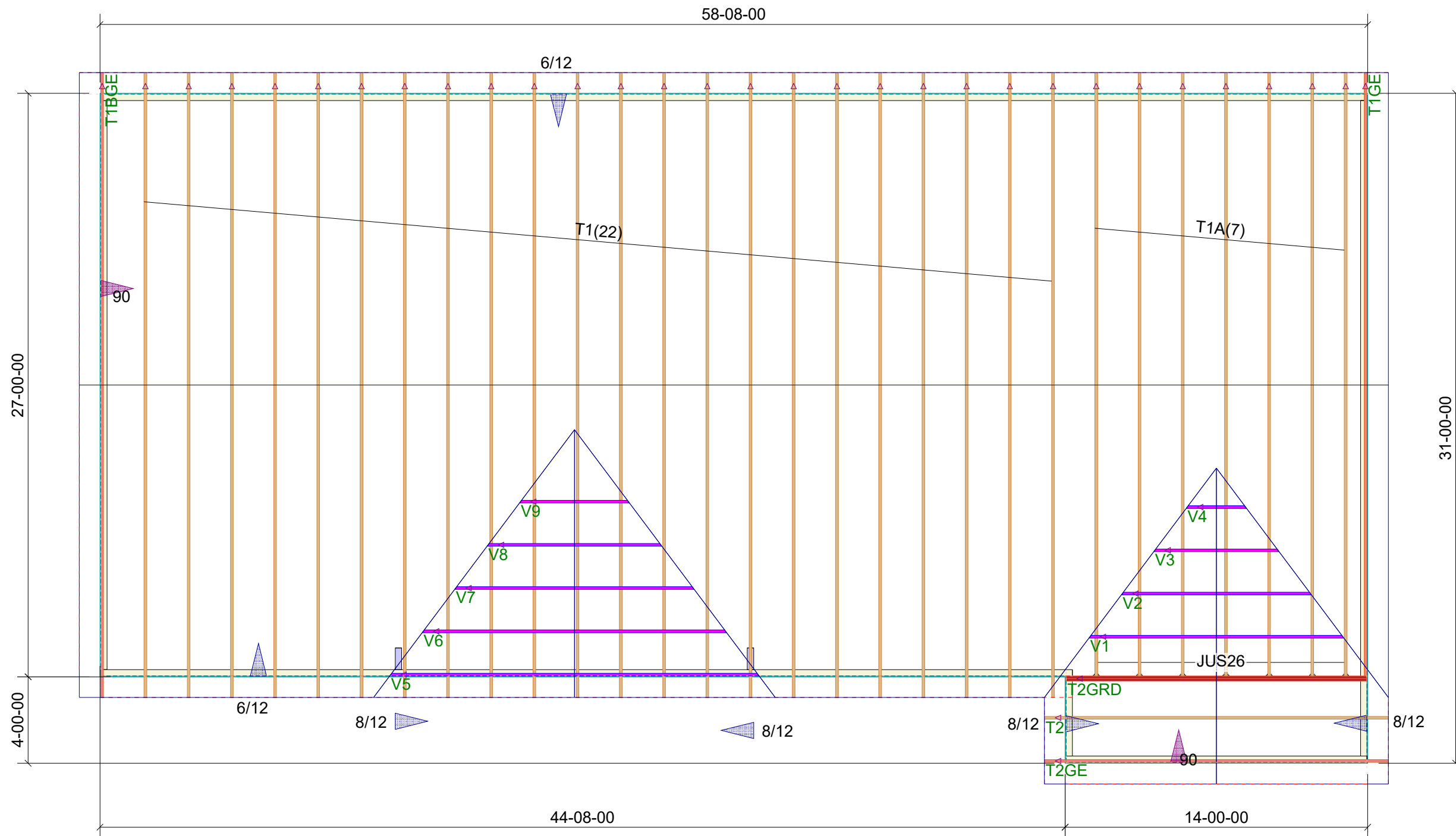
- Ⓝ - Nailed
- Ⓛ - Ledger

Date Quoted:  
4/29/2022

Designer:  
**Nate Donaldson**

Family Building Company  
1016 Mockingbird Dr  
Raleigh, NC  
27615

**Peak Truss Builders, LLC**  
PO Box 340, New Hill, NC 27562



21 Chartres St  
Roof Trusses  
2' OC, 1' OH

Truss Connector Total List		
Manuf	Product	Qty
USP	JUS26	7