



ROOF & FLOOR TRUSSES & BEAMS

Reilly Road Industrial Park
Fayetteville, N.C. 28309
Phone: (910) 864-8787
Fax: (910) 864-4444

Bearing reactions less than or equal to 3000# are deemed to comply with the prescriptive Code requirements. The contractor shall refer to the attached Tables (derived from the prescriptive Code requirements) to determine the minimum foundation size and number of wood studs required to support reactions greater than 3000# but not greater than 15000#. A registered design professional shall be retained to design the support system for any reaction that exceeds those specified in the attached Tables. A registered design professional shall be retained to design the support system for all reactions that exceed 15000#.

Signature
Neil Baggett

LOAD CHART FOR JACK STUDS

(BASED ON TABLES R502.5(1) & (b))
NUMBER OF JACK STUDS REQUIRED @ EA END OF HEADER/GIRDER

| END REACTION (UP TO) | REQ'D STUDS FOR (1)PLY HEADER | END REACTION (UP TO) | REQ'D STUDS FOR (1)PLY HEADER | END REACTION (UP TO) | REQ'D STUDS FOR (1)PLY HEADER |
|----------------------|-------------------------------|----------------------|-------------------------------|----------------------|-------------------------------|
| 1700 | 1 | 2550 | 1 | 3400 | 1 |
| 3400 | 2 | 5100 | 2 | 6800 | 2 |
| 5100 | 3 | 7650 | 3 | 10200 | 3 |
| 6800 | 4 | 10200 | 4 | 13600 | 4 |
| 8500 | 5 | 12750 | 5 | 17000 | 5 |
| 10200 | 6 | 15300 | 6 | | |
| 11900 | 7 | | | | |
| 13600 | 8 | | | | |
| 15300 | 9 | | | | |

Plumbing Drop Notes

1. Plumbing drop locations shown are NOT exact.
2. Contractor to verify ALL plumbing drop locations prior to setting Floor Trusses.
3. Adjust spacing as needed not to exceed 24"oc.

Dimension Notes

1. All exterior wall to wall dimensions are to face of stud unless noted otherwise
2. All interior wall dimensions are to face of stud unless noted otherwise
3. All exterior wall to truss dimensions are to face of stud unless noted otherwise

Roof Area = 2756.26 sq.ft.
Ridge Line = 31.62 ft.
Hip Line = 0 ft.
Horiz. OH = 221.25 ft.
Raked OH = 150.32 ft.
Decking = 95 sheets

All Walls Shown Are Considered Load Bearing

▲ = Indicates Left End of Truss
(Reference Engineered Truss Drawing)
Do Not Erect Trusses Backwards

1 Truss Placement Plan
Scale: 1/4"=1'

Hatch Legend

- Padded HVAC
- 2nd Floor Walls @ 8' 1 1/2" UNO
- Wall @ 13' 1 1/2"
- Flush Beam
- Drop Beam

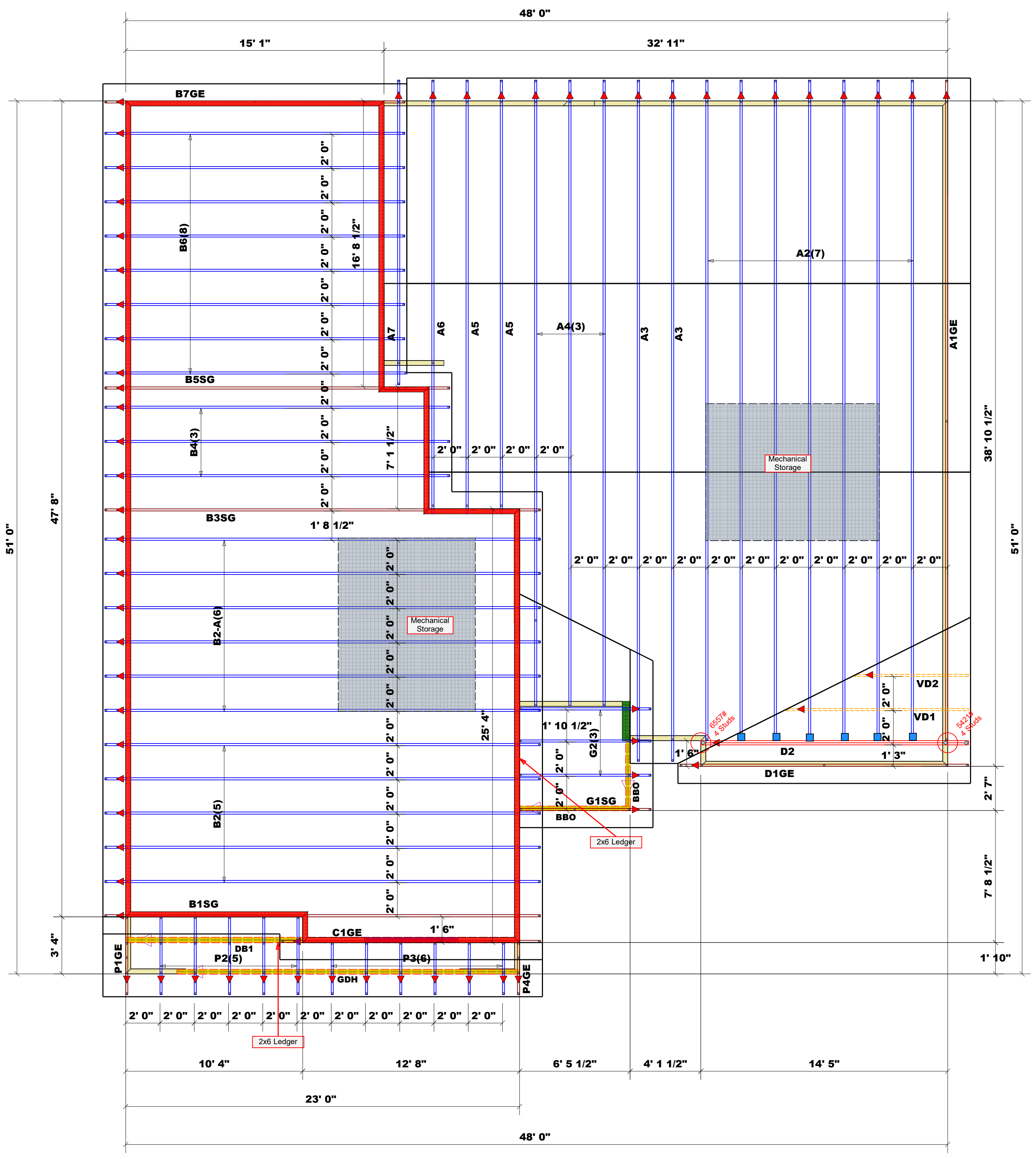
Products

| PlotID | Length | Product | Plies | Net Qty |
|--------|--------|-------------------------|-------|---------|
| FB1 | 9' 0" | 1-3/4"x 16" LVL Kerto-S | 2 | 2 |
| FB2 | 7' 0" | 1-3/4"x 16" LVL Kerto-S | 2 | 2 |
| DB1 | 23' 0" | 1-3/4"x 18" LVL Kerto-S | 2 | 2 |
| GDH | 20' 0" | 2x12 SP No.2 | 2 | 2 |

All Truss Reactions are Less than 3,000 lbs. Unless Noted Otherwise.

○ -- Denotes Reaction Greater than 3,000 lbs. Reaction / # of Studs

| Connector Information | | | | Nail Information | | |
|-----------------------|---------|-------|-----|------------------|------------|------------|
| Sym | Product | Manuf | Qty | Supported Member | Header | Truss |
| ● | HUS410 | USP | 8 | Varies | 16d/3-1/2" | 16d/3-1/2" |
| ■ | HUS26 | USP | 7 | Varies | 16d/3-1/2" | 16d/3-1/2" |



| BUILDER | JOB NAME | PLAN | SEAL DATE | QUOTE # | JOB # |
|------------------------|------------------------|---------|-----------|--------------|--------------|
| Precision Custom Homes | Lot 11 Liberty Meadows | Hazlitt | 7/20/2022 | N/A | J1021-6178 |
| Harnett | Lot 11 Liberty Meadows | Roof | 7/22/2022 | Neil Baggett | Neil Baggett |

THIS IS A TRUSS PLACEMENT DIAGRAM ONLY.
These trusses are designed as individual building components to be incorporated into the building design at the specification of the building designer. See individual design sheets for each truss design identified on the placement drawing. The building designer is responsible for temporary and permanent bracing of the roof and floor system and for the overall structure. The design of the truss support structure including headers, beams, walls, and columns is the responsibility of the building designer. For general guidance regarding bracing, consult BCSI-B1 and BCSI-B3 provided with the truss delivery package or online @ sbciindustry.com



ROOF & FLOOR TRUSSES & BEAMS

Reilly Road Industrial Park
Fayetteville, N.C. 28309
Phone: (910) 864-8787
Fax: (910) 864-4444

Bearing reactions less than or equal to 3000# are deemed to comply with the prescriptive Code requirements. The contractor shall refer to the attached Tables (derived from the prescriptive Code requirements) to determine the minimum foundation size and number of wood studs required to support reactions greater than 3000# but not greater than 15000#. A registered design professional shall be retained to design the support system for any reaction that exceeds those specified in the attached Tables. A registered design professional shall be retained to design the support system for all reactions that exceed 15000#.

Signature _____
Neil Baggett

LOAD CHART FOR JACK STUDS

(BASED ON TABLES R502.5(1) & (b))
NUMBER OF JACK STUDS REQUIRED @ EA END OF HEADER/GIRDER

| END REACTION (UP TO) | REQ'D STUDS FOR (1)PLY HEADER | END REACTION (UP TO) | REQ'D STUDS FOR (1)PLY HEADER | END REACTION (UP TO) | REQ'D STUDS FOR (1)PLY HEADER |
|----------------------|-------------------------------|----------------------|-------------------------------|----------------------|-------------------------------|
| 1700 | 1 | 2550 | 1 | 3400 | 1 |
| 3400 | 2 | 5100 | 2 | 6800 | 2 |
| 5100 | 3 | 7650 | 3 | 10200 | 3 |
| 6800 | 4 | 10200 | 4 | 13600 | 4 |
| 8500 | 5 | 12750 | 5 | 17000 | 5 |
| 10200 | 6 | 15300 | 6 | | |
| 11900 | 7 | | | | |
| 13600 | 8 | | | | |
| 15300 | 9 | | | | |

Plumbing Drop Notes

1. Plumbing drop locations shown are NOT exact.
2. Contractor to verify ALL plumbing drop locations prior to setting Floor Trusses.
3. Adjust spacing as needed not to exceed 24"oc.

Dimension Notes

1. All exterior wall to wall dimensions are to face of stud unless noted otherwise
2. All interior wall dimensions are to face of stud unless noted otherwise
3. All exterior wall to truss dimensions are to face of stud unless noted otherwise

Roof Area = 2756.26 sq.ft.
Ridge Line = 31.62 ft.
Hip Line = 0 ft.
Horiz. OH = 221.25 ft.
Raked OH = 150.32 ft.
Decking = 95 sheets

All Walls Shown Are Considered Load Bearing

▲ = Indicates Left End of Truss (Reference Engineered Truss Drawing)
Do Not Erect Trusses Backwards

1 Truss Placement Plan
Scale: 1/4"=1'

Hatch Legend

- Padded HVAC
- 2nd Floor Walls @ 8' 1 1/2" UNO
- Wall @ 13' 1 1/2"
- Flush Beam
- Drop Beam

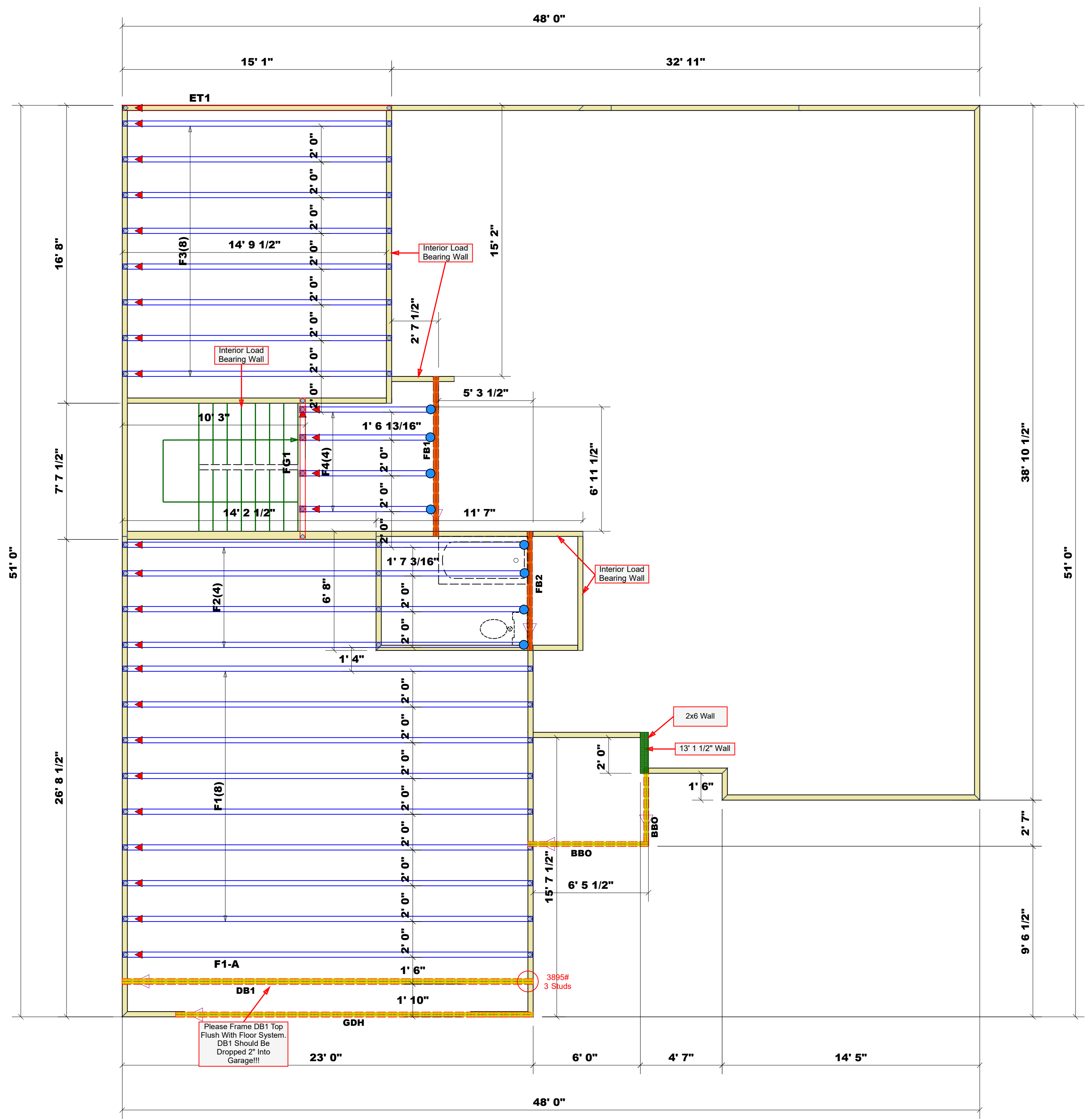
Products

| PlotID | Length | Product | Plies | Net Qty |
|--------|--------|-------------------------|-------|---------|
| FB1 | 9' 0" | 1-3/4"x 16" LVL Kerto-S | 2 | 2 |
| FB2 | 7' 0" | 1-3/4"x 16" LVL Kerto-S | 2 | 2 |
| DB1 | 23' 0" | 1-3/4"x 18" LVL Kerto-S | 2 | 2 |
| GDH | 20' 0" | 2x12 SP No.2 | 2 | 2 |

All Truss Reactions are Less than 3,000 lbs. Unless Noted Otherwise.
○ -- Denotes Reaction Greater than 3,000 lbs. Reaction / # of Studs

Connector Information

| Sym | Product | Manuf | Qty | Supported Member | Header | Truss |
|-----|---------|-------|-----|------------------|------------|------------|
| ● | HUS410 | USP | 8 | Varies | 16d/3-1/2" | 16d/3-1/2" |
| ■ | HUS26 | USP | 7 | Varies | 16d/3-1/2" | 16d/3-1/2" |



Please Frame DB1 Top Flush With Floor System. DB1 Should Be Dropped 2" Into Garage!!!

| BUILDER | JOB NAME | PLAN | SEAL DATE | QUOTE # | JOB # |
|---------|------------------------|------------------------|-----------|--------------|--------------|
| Harnett | Precision Custom Homes | Lot 11 Liberty Meadows | 7/20/2022 | N/A | J1021-6179 |
| Harnett | Lot 11 Liberty Meadows | Floor | 7/22/2022 | Neil Baggett | Neil Baggett |

THIS IS A TRUSS PLACEMENT DIAGRAM ONLY. These trusses are designed as individual building components to be incorporated into the building design at the specification of the building designer. See individual design sheets for each truss design identified on the placement drawing. The building designer is responsible for temporary and permanent bracing of the roof and floor system and for the overall structure. The design of the truss support structure including headers, beams, walls, and columns is the responsibility of the building designer. For general guidance regarding bracing, consult BCSI-B1 and BCSI-B3 provided with the truss delivery package or online @ sbciniindustry.com