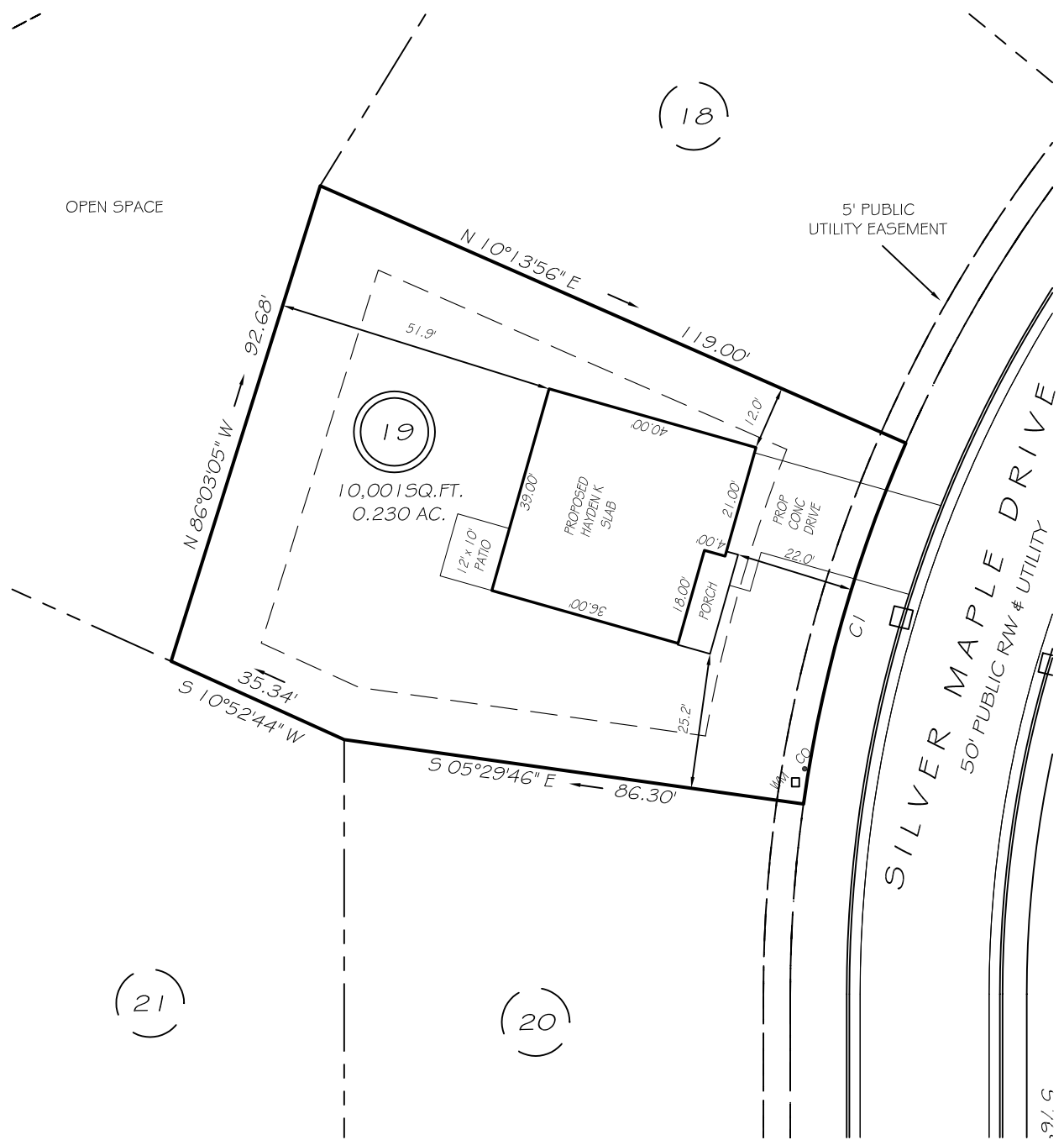
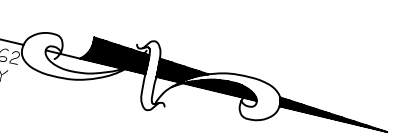


I, MICHAEL P. GRIFFIN, certify that under my direction and supervision this map was drawn from an actual field survey; that the error of closure of the survey as calculated by coordinates is 1: 10,000+; that the area shown hereon was calculated by coordinates.

Witness my hand and seal this day of MONTH 2022.

BM 2022 PG5 156-162
HARNETT CO. REGISTRY



IMPERVIOUS AREAS

HOUSE	1604 SQ. FT.
DRIVE & WALKS	464 SQ. FT.
PATIO	120 SQ. FT.
TOTAL	2188 SQ. FT.
ALLOWED	3000 SQ. FT.

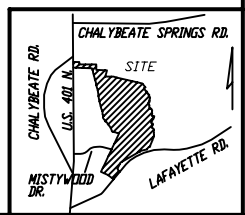
SETBACKS

FRONT	20'
REAR	15'
SIDE	10'
CORNER SIDE	15'

CI R=255.00' L=70.00' S87°37'55"E 69.78'

LEGEND

EIP	EXISTING IRON PIPE	FES	FLARED END SECTION
IPS	IRON PIPE SET	WM	WATER METER
RW	RIGHT OF WAY	CO	CLEAN OUT
N/F	NOW OR FORMERLY	FH	FIRE HYDRANT
EIS	EXISTING IRON STAKE	CB	CATCH BASIN



PRELIMINARY
NOT FOR RECORDATION,
SALES OR CONVEYANCE



GRIFFIN LAND SURVEYING, INC.
P. O. BOX 148
FUQUAY-VARINA, NC 27526
(919) - 567 - 1963

PLOT PLAN
FOR
D. R. HORTON
WOODGROVE
LOT 19
SILVER MAPLE DRIVE
NORTH CAROLINA
HARNETT CO. HECTOR'S CREEK TWSHP

DRAWN BY NMF

DATE 5/13/22

CHECKED BY MPG

SCALE 1" = 30'