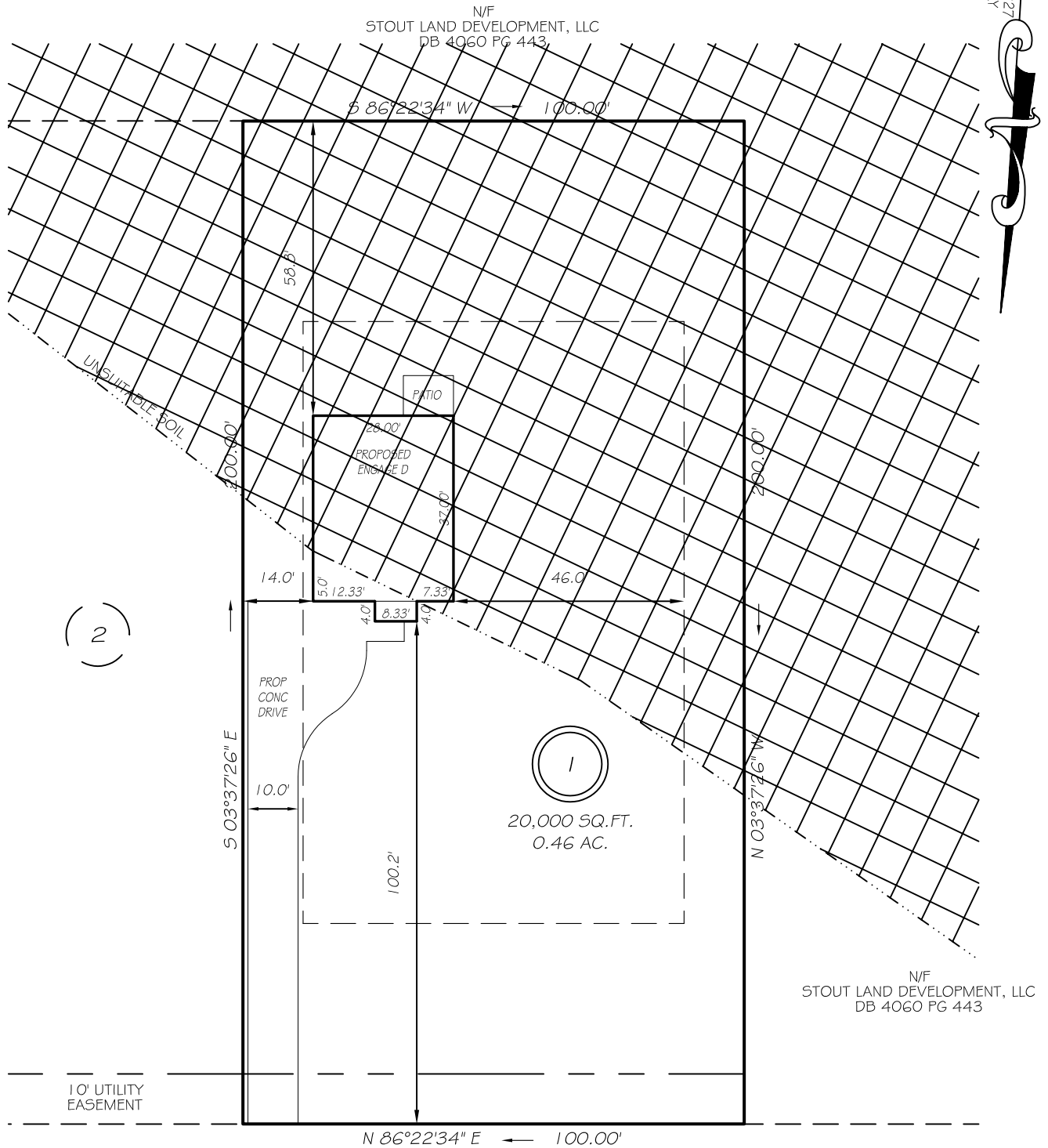


I, MICHAEL P. GRIFFIN, certify that under my direction and supervision this map was drawn from an actual field survey; that the error of closure of the survey as calculated by coordinates is 1: 10,000+; that the area shown hereon was calculated by coordinates.

Witness my hand and seal this day of MONTH 2022.

BK 2022 PAGE 226-227  
HARNETT CO. REGISTRY



BETTY ANN STREET  
50' RW (PUBLIC & UTILITY ACCESS)

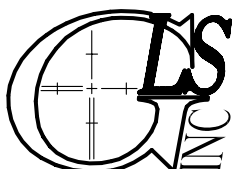
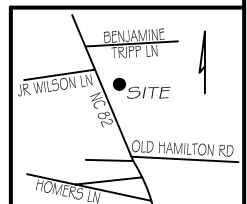
REVISION: MOVE FORWARD 7/12/22  
REVISION: REDRAW DW 7/11/22  
REVISION: MOVE BACK 7/11/22

SETBACKS  
FRONT 40'  
REAR 40'  
SIDE 12'

**P R E L I M I N A R Y**  
NOT FOR RECORDATION,  
SALES OR CONVEYANCE

**LEGEND**

EIP	EXISTING IRON PIPE	FES	FLARED END SECTION
IPS	IRON PIPE SET	WM	WATER METER
R/W	RIGHT OF WAY	CO	CLEAN OUT
N/F	NOW OR FORMERLY	FH	FIRE HYDRANT
EIS	EXISTING IRON STAKE	CB	CATCH BASIN



GRIFFIN LAND SURVEYING, INC.

P. O. BOX 148  
FUQUAY-VARINA, NC 27526  
(919) - 567 - 1963

PLOT PLAN  
FOR

**H & H HOMES**

SCHABERT CROSSING SUBDIVISION

LOT 1

22 BETTY ANN STREET

ERWIN, N.C.

HARNETT COUNTY DUKE TOWNSHIP

DRAWN BY KDF

DATE 7/11/22

CHECKED BY MPG

SCALE 1" = 30'