

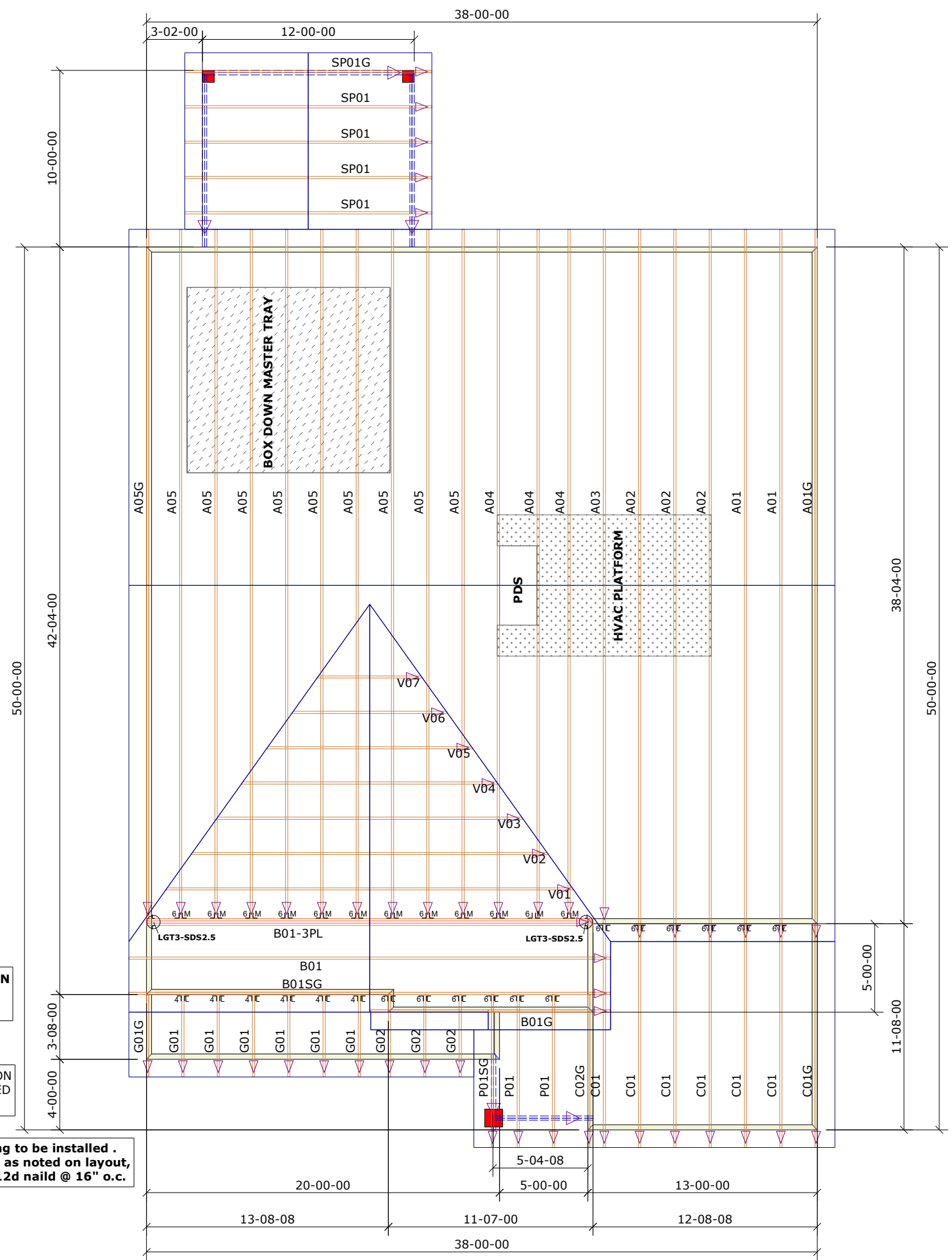
**General Notes:**  
 - Per ANSI/TPI 1-2002 all "Truss to Wall" connections are the responsibility of the Building Designer, not the Truss Manufacturer.  
 - Dimensions are Feet-Inches- Sixteenths.

- Trusses are to be 24" o.c. unless noted otherwise (U.N.O.)  
 - Trusses are not designed to support brick U.N.O.  
 - Do not cut or modify trusses without first contacting Builders FirstSource.  
 - Immediately contact Builders FirstSource if trusses are damaged.

**Connection Notes:**  
 - All hangers are to be Simpson or equivalent U.N.O.  
 - Use Manufacturer's specifications for all hanger connections U.N.O.  
 - Use 10d x 1 1/2" Nails in hanger connections to single ply roof girder trusses.

**Floor Notes:**  
 - Shift truss as required to avoid plumbing traps.  
 - Installation Contractor and/or Field Supervisor are to verify all dimensions, trap locations, and options prior to installation

**Dimension Notes:**  
 - Drawing not to scale. Do not scale dimensions



9'-1-2" 1ST FLOOR  
 14" FLOOR  
 8'-1-2" 2ND FLOOR

NOTE: LEFT END OF TRUSS AS SHOWN ON TRUSS DETAIL DRAWINGS ARE INDICATED BY TRIANGLE ICONS.

NOTE: LEFT END OF TRUSS AS SHOWN ON TRUSS DETAIL DRAWINGS ARE INDICATED BY TRIANGLE ICONS.

Space trusses 2' o.c. unless a wide P.D.S. is going to be installed. If wide P.D.S. is used, follow special truss spacing as noted on layout, & attach 2x4 ledgers to Top & Bottom chords w/12d nail @ 16" o.c.

Hanger List		All Tie Downs H2.5A Unless noted	
12	HTU26	MJ18	
2	LGT3-SDS2.5	JL	
6	LUS24	L14	
12	LUS26	L18	

**Special Items List**

**Misc Material**

MATTAMY HOMES			
Spirit 40's Sequoia	Elev:	FARMHOUSE	
PROVIDENCE CREEK			
WAKE	NC	Lot:	81
SCREEN PORCH/LH			
<b>Appwright #</b>			
-			
<b>Code:</b> IRC 2015			
<b>Loading:</b>			
T.C.L.L.		20	
T.C.D.L.		10	
B.C.L.L.		0	
B.C.D.L.		10	
<b>Designed By:</b>	TG	<b>Wind:</b>	M.P.H. 115 MPH
<b>Layout:</b>	PC81	Exposure Category	
<b>L/O Date:</b>	7/11/22	EXPOSURE B	
<b>Revision History</b>		<b>Wind:</b>	
Rev1:	xx/xx/xx	M.P.H. 115 MPH	
Rev2:	xx/xx/xx	Exposure Category	
Rev3:	xx/xx/xx	EXPOSURE B	
<b>Pick Ticket:</b>	-	<b>Job No.:</b>	PC81
<b>Sales No.:</b>	-	<b>Acct No.:</b>	-

Hatch Legend	
	Attic Room
	Volume Ceiling
	Stick Framing

