

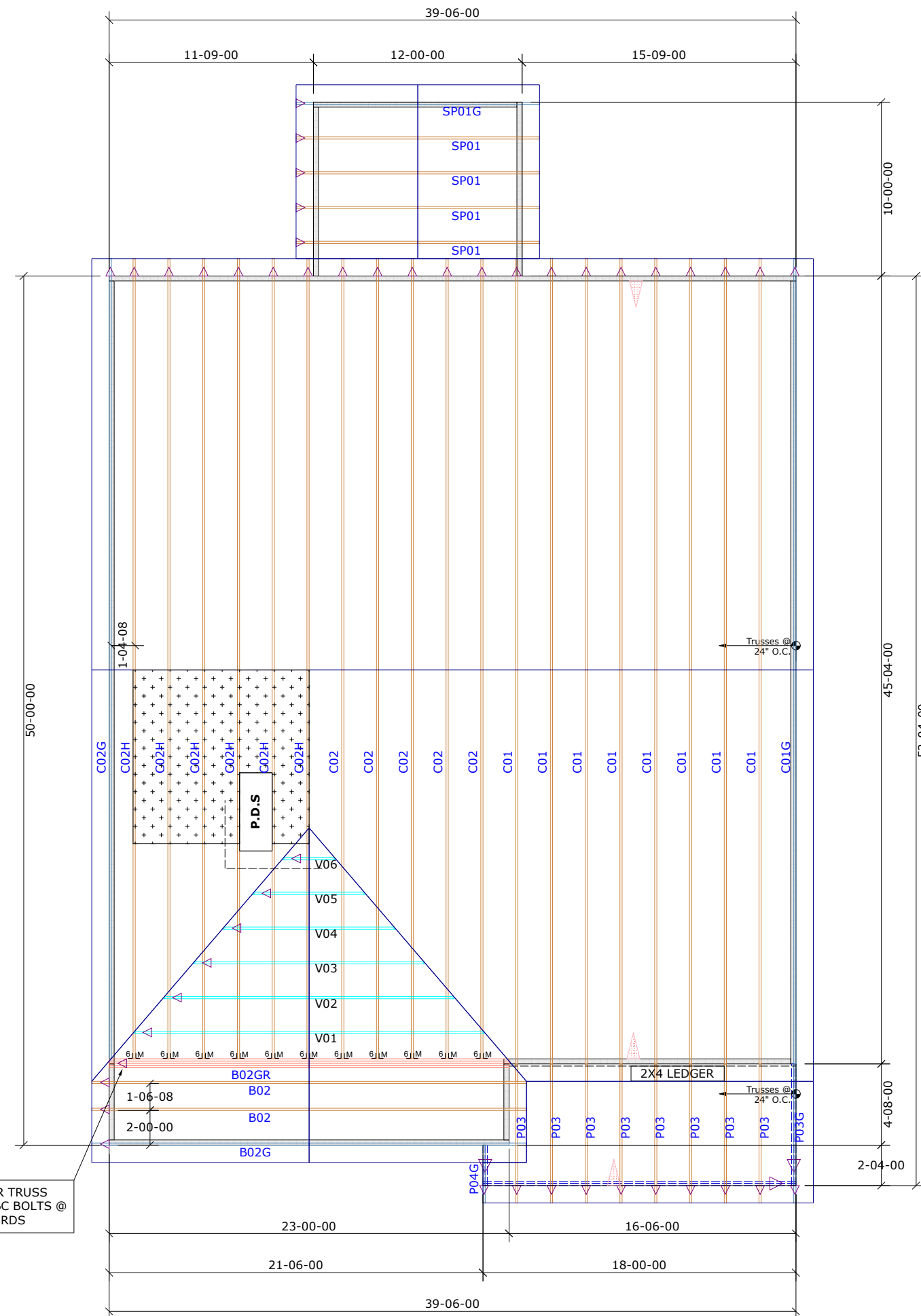
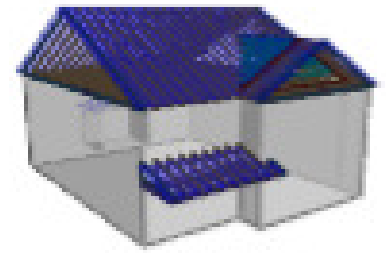
General Notes:
 - Per ANSI/TPI 1-2002 all " Truss to Wall" connections are the responsibility of the Building Designer, not the Truss Manufacturer.
 - Dimensions are Feet-Inches- Sixteenths.
 - Trusses are to be 24" o.c. unless noted otherwise (U.N.O.)
 - Trusses are not designed to support brick U.N.O.
 - Do not cut or modify trusses without first contacting Builders FirstSource.
 - Immediately contact Builders FirstSource if trusses are damaged.

Connection Notes:
 - All hangers are to be Simpson or equivalent U.N.O.
 - Use Manufacturer's specifications for all hanger connections U.N.O.
 - Use 10d x 1 1/2" Nails in hanger connections to single ply roof girder trusses.

Floor notes:
 - Shift truss as required to avoid plumbing traps.
 - Installation Contractor and/or Field Supervisor are to verify all dimensions, trap locations, and options prior to installation

Dimension Notes:
 - Drawing not to scale. Do not scale dimensions

△◁▷ LEFT END OF TRUSS AS SHOWN ON TRUSS DETAIL DRAWINGS ARE INDICATED BY TRIANGLE ICONS.



NOTE: BOLT 4-PLY GIRDER TRUSS TOGETHER WITH 1/2" DIA. GBC BOLTS @ 48" O.C. BOTTOM CHORDS

HANGER LIST		ALL TIE DOWNS H2.5A UNLESS NOTED	
11	HTU26	M	6
		SPECIAL ITEMS LIST	
		MISC MATERIAL	
MATTAMY HOMES			
VOYAGEUR		ELEV:	FARMHOUSE
PROVIDENCE CREEK			
---	NC	LOT:	80
		APPWRIGHT #	

<ul style="list-style-type: none"> [OPTION 1] [OPTION 2] [OPTION 3] 		CODE:	IRC 2015
		LOADING:	
		T.C.L.L.	20 PSF
DESIGNED BY:	AS	T.C.D.L.	10 PSF
LAYOUT:	FHSPTC	B.C.L.L.	0 PSF
L/O DATE:	7/1/2022	B.C.D.L.	10 PSF
REVISION HISTORY		WIND:	
REV1:	XX/XX/XX	M.P.H.	115 MPH
REV2:	XX/XX/XX	EXPOSURE CATEGORY	
REV3:	XX/XX/XX	B (WOODED AREAS/OTHERS)	
PICK TICKET:	---	JOB NO:	---
SALES NO:	---	ACCT NO:	---
HATCH LEGEND			
	ATTIC ROOM		
	VOLUME CEILING		
	STICK FRAMING		