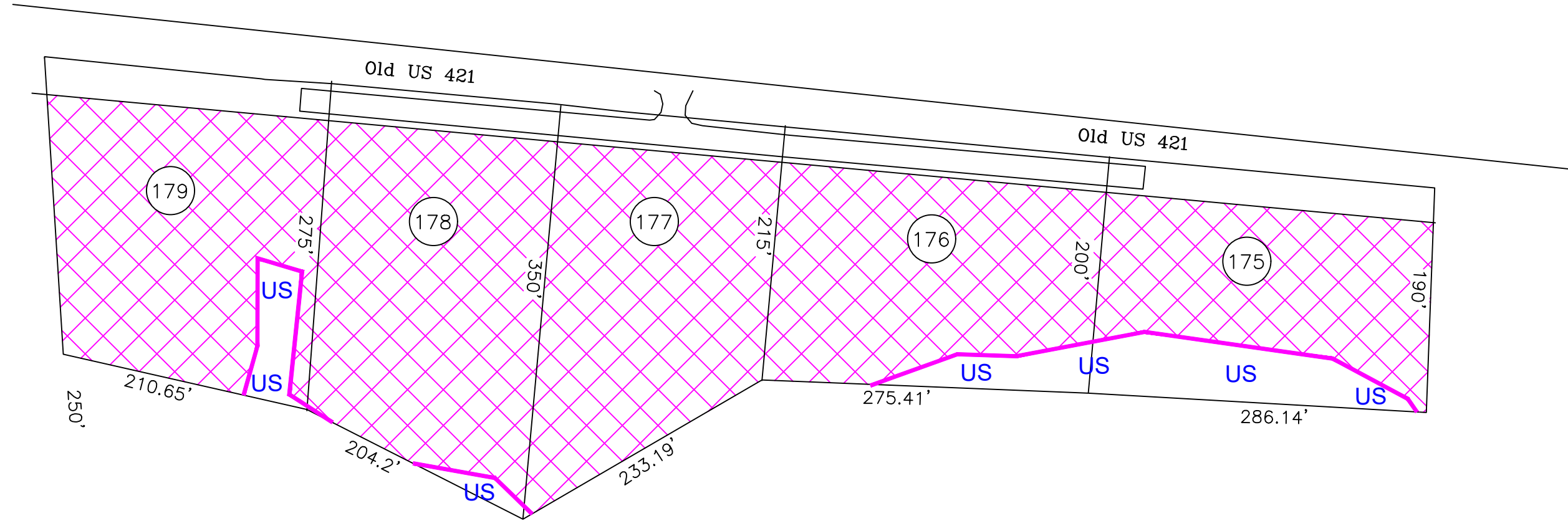
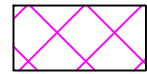


Preliminary Soil Evaluation
 Duncan's Creek
 Lots 175-179 - Old US 421
 Harnett County



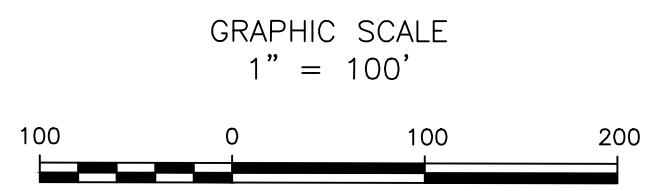
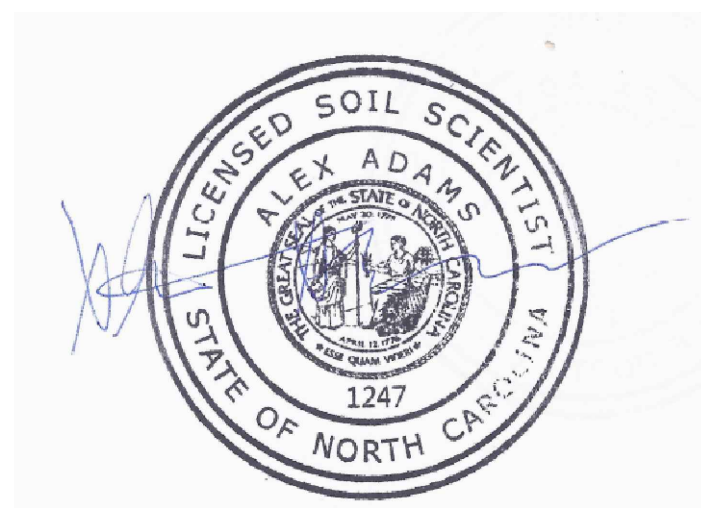
*Not a Survey
 (sketched from preliminary proposal)

Legend

 Areas contain soils with 30 inches or more of useable material and have potential for conventional, modified conventional, LPP or ultra-shallow conventional septic systems. There may be inclusion of soils 24-29 inches to a restrictive horizon that will have potential for LPP septic systems.

US Unsuitable Areas

*Preliminary Soils Evaluation
 *Soil boundary was sketched onto a preliminary map of the property supplied by the client's surveyor.
 *Not a Survey.
 *Septic system setbacks listed below for new lots.
 1) 10' from property lines.
 2) 100' from wells for primary systems.
 3) 50' from surface waters (streams, ponds, lakes).
 *Any mechanical disturbances such as grading, cutting and filling of the suitable soil areas can render areas unsuitable for future septic systems.
 *See accompanying report for additional information.
 *Due to Soil Variability, Adams soil consulting cannot guarantee that the areas shown as suitable will be permitted by the local Health Department.



Adams
 Soil Consulting
 919-414-6761
 Project #1111