

Job 72284865	Truss A1	Truss Type Truss	Qty 3	Ply 1	PROF BLD SUPPLY 1000 PLAN # 4 RF Job Reference (optional)
-----------------	-------------	---------------------	----------	----------	--

UFP Mid Atlantic LLC, 5631 S. NC 62, Burlington, NC, Micah Clayton

Run: 8.51 S Oct 22 2021 Print: 8.510 S Oct 22 2021 MiTek Industries, Inc. Wed Jul 13 17:08:44

Page: 1

ID:pN15YSds96dmsqp4S7Hy2ByibU7-KfbHgg8xcApqc4Wa2ZfAGmayk?NgeTaY_GGH_vvyQqX

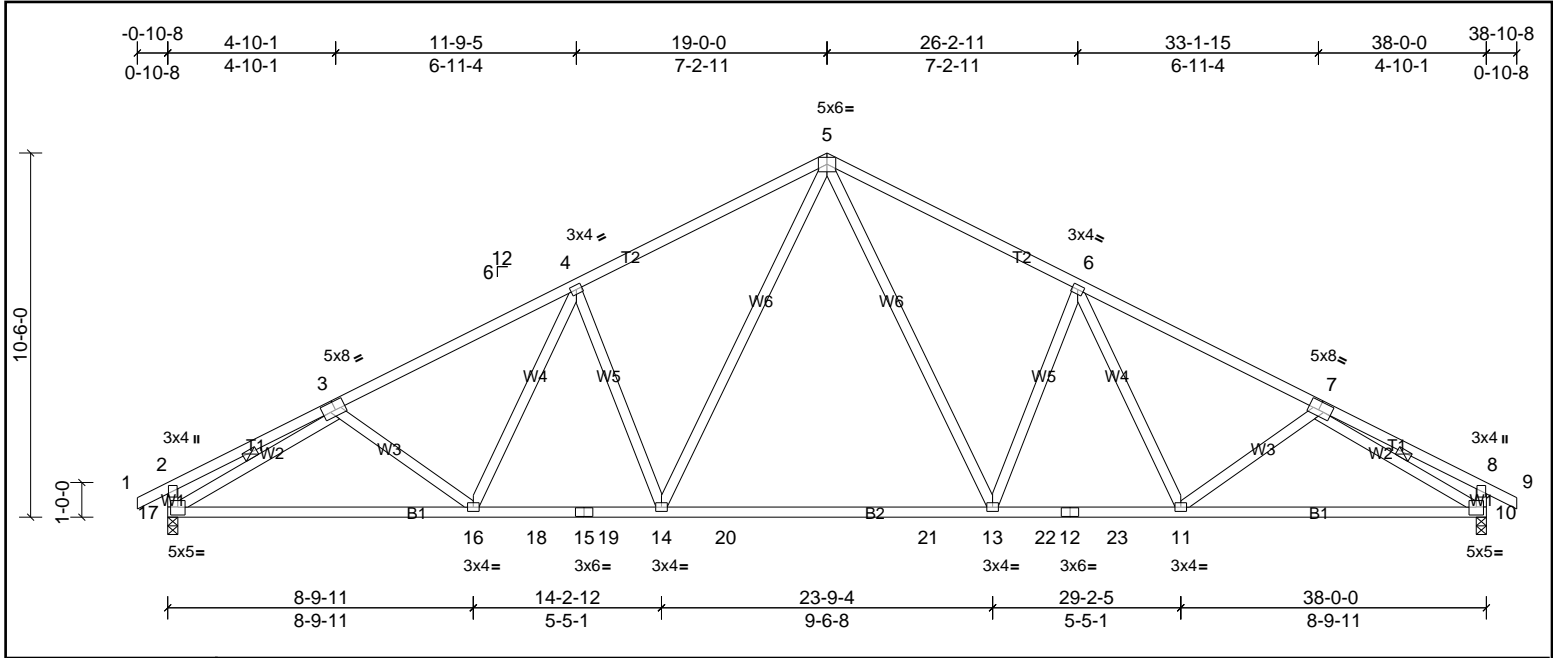


Plate Offsets (X, Y): [3:0-3-8,0-3-0], [7:0-3-8,0-3-0], [10:0-2-8,0-2-12], [17:0-2-8,0-2-12]

Loading	(psf)	Spacing	2-0-0	CSI	DEFL	in	(loc)	l/defl	L/d	PLATES	GRIP	
TCLL (roof)	20.0	Plate Grip DOL	1.15	TC	0.77	Vert(LL)	-0.32	13-14	>999	240	MT20	244/190
TCDL	10.0	Lumber DOL	1.15	BC	0.85	Vert(CT)	-0.61	13-14	>747	180		
BCLL	0.0*	Rep Stress Incr	YES	WB	0.56	Horz(CT)	0.11	10	n/a	n/a		
BCDL	10.0	Code	IRC2015/TPI2014	Matrix-MSH							Weight: 228 lb	FT = 20%

LUMBER	BRACING
TOP CHORD: 2x4 SP No.2	TOP CHORD: Structural wood sheathing directly applied, except end verticals.
BOT CHORD: 2x4 SP No.2 *Except* 15-12:2x4 SP No.1	BOT CHORD: Rigid ceiling directly applied or 8-3-10 oc bracing.
WEBS: 2x4 SP No.3	WEBS: 1 Row at midpt

REACTIONS (lb/size) 10=1570/0-3-8, (min. 0-1-14), 17=1570/0-3-8, (min. 0-1-14)
Max Horiz 17=155 (LC 9)
Max Uplift 10=-226 (LC 11), 17=-226 (LC 10)

FORCES (lb) - Max. Comp./Max. Ten. - All forces 250 (lb) or less except when shown.
TOP CHORD: 2-3=-355/102, 3-4=-2275/658, 4-5=-2058/717, 5-6=-2058/717, 6-7=-2275/658, 7-8=-355/102, 2-17=-329/166, 8-10=-329/166
BOT CHORD: 16-17=-471/1994, 16-18=-328/1915, 15-18=-328/1915, 15-19=-328/1915, 14-19=-328/1915, 14-20=-120/1425, 20-21=-120/1425, 13-21=-120/1425, 13-22=-328/1915, 12-22=-328/1915, 12-23=-328/1915, 11-23=-328/1915, 10-11=-471/1994
WEBS: 3-17=-2080/598, 4-14=-561/317, 5-14=-229/814, 5-13=-229/814, 6-13=-561/317, 7-10=-2080/598

- NOTES**
- Unbalanced roof live loads have been considered for this design.
 - Wind: ASCE 7-10; Vult=130mph (3-second gust) Vasd=103mph; TCDL=6.0psf; BCDL=6.0psf; h=35ft; Cat. II; Exp B; Enclosed; MWFRS (envelope) exterior zone and C-C Exterior (2) zone; cantilever left and right exposed; end vertical left and right exposed; C-C for members and forces & MWFRS for reactions shown; Lumber DOL=1.60 plate grip DOL=1.60
 - All plates are 3x4 MT20 unless otherwise indicated.
 - This truss has been designed for a 10.0 psf bottom chord live load nonconcurrent with any other live loads.
 - * This truss has been designed for a live load of 20.0psf on the bottom chord in all areas where a rectangle 3-06-00 tall by 2-00-00 wide will fit between the bottom chord and any other members, with BCDL = 10.0psf.
 - Provide mechanical connection (by others) of truss to bearing plate capable of withstanding 226 lb uplift at joint 17 and 226 lb uplift at joint 10.
 - This truss is designed in accordance with the 2015 International Residential Code sections R502.11.1 and R802.10.2 and referenced standard ANSI/TPI 1.



This design is based upon parameters shown, and is for an individual building component to be installed and loaded vertically. Applicability of design parameters and proper incorporation of component is responsibility of the Building Designer. Building Designer shall verify all design information on this sheet for conformance with conditions and requirements of the specific building and governing codes and ordinances. Building Designer accepts responsibility for the correctness or accuracy of the design information as it may relate to a specific building. Certification is valid only when truss is fabricated by a UFPI plant. Bracing shown is for lateral support of truss members only and does not replace erection and permanent bracing. Refer to Building Component Safety Information (BCSI) for general guidance regarding storage, erection and bracing available from SBCA and Truss Plate Institute.



Job 72284865	Truss A1G	Truss Type Truss	Qty 1	Ply 1	PROF BLD SUPPLY 1000 PLAN # 4 RF Job Reference (optional)
-----------------	--------------	---------------------	----------	----------	--

UFP Mid Atlantic LLC, 5631 S. NC 62, Burlington, NC, Micah Clayton

Run: 8.51 S Oct 22 2021 Print: 8.510 S Oct 22 2021 MiTek Industries, Inc. Wed Jul 13 17:08:45

Page: 1

ID: t_vL7mcccdUN2cWfkiEUzmyibU9-KfbHqg8xcApqc4Wa2ZfAGma5g?ZOeZEY_GGH_vvyQqX

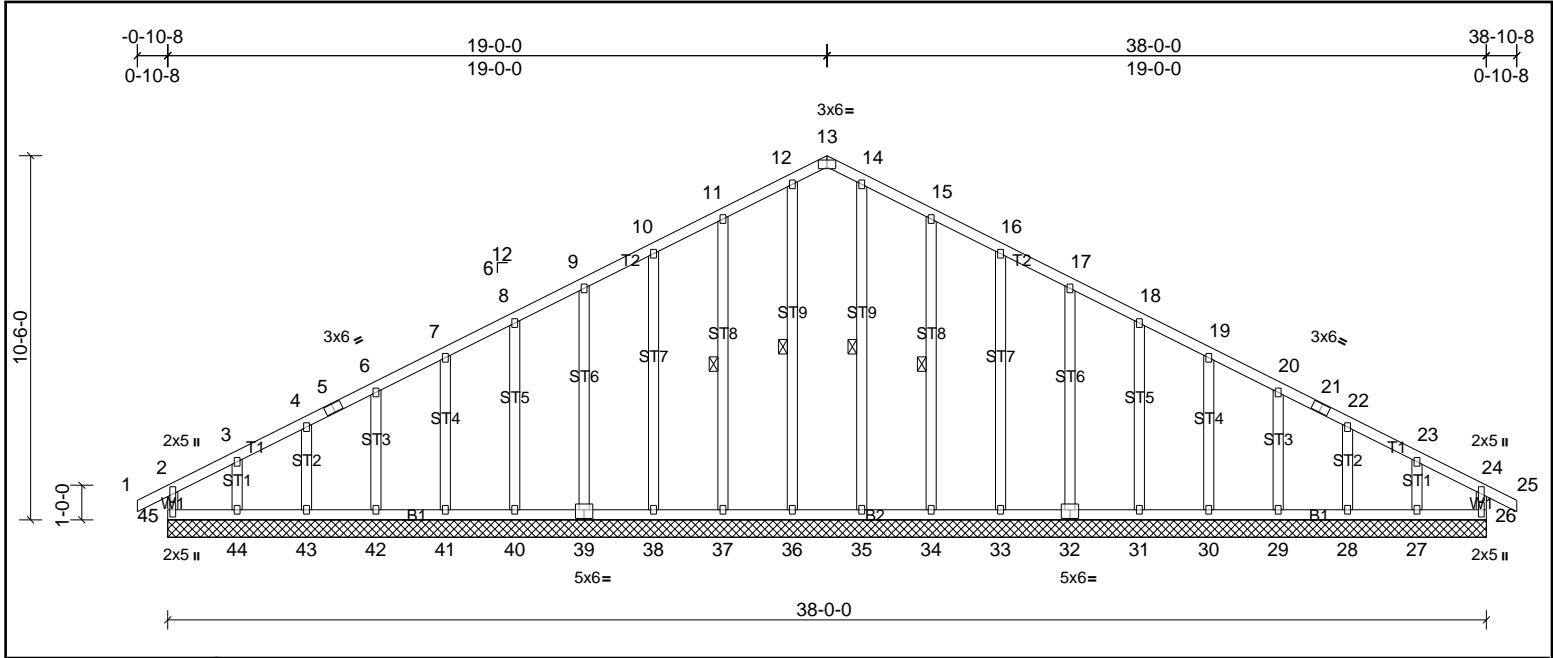


Plate Offsets (X, Y): [13:0-3-0,Edge], [32:0-3-0,0-3-0], [39:0-3-0,0-3-0]

Loading	(psf)	Spacing	2-0-0	CSI	DEFL	in	(loc)	l/defl	L/d	PLATES	GRIP	
TCLL (roof)	20.0	Plate Grip DOL	1.15	TC	0.20	Vert(LL)	n/a	-	n/a	999	MT20	244/190
TCDL	10.0	Lumber DOL	1.15	BC	0.10	Vert(CT)	n/a	-	n/a	999		
BCLL	0.0*	Rep Stress Incr	YES	WB	0.14	Horz(CT)	0.01	26	n/a	n/a		
BCDL	10.0	Code	IRC2015/TPI2014	Matrix-MR							Weight: 271 lb	FT = 20%

LUMBER		BRACING	
TOP CHORD	2x4 SP No.2	TOP CHORD	Structural wood sheathing directly applied or 6-0-0 oc purlins, except end verticals.
BOT CHORD	2x4 SP No.2	BOT CHORD	Rigid ceiling directly applied or 10-0-0 oc bracing.
WEBS	2x4 SP No.3	WEBS	1 Row at midpt
OTHERS	2x4 SP No.3		12-36, 14-35, 11-37, 15-34

REACTIONS All bearings 38-0-0.
 (lb) - Max Horiz 45=-155 (LC 8)
 Max Uplift All uplift 100 (lb) or less at joint(s) 26, 28, 29, 30, 31, 32, 33, 34, 37, 38, 39, 40, 41, 42, 43, 45 except 27=-138 (LC 11), 44=-155 (LC 10)
 Max Grav All reactions 250 (lb) or less at joint(s) 26, 27, 28, 29, 30, 31, 32, 33, 34, 35, 36, 37, 38, 39, 40, 41, 42, 43, 44, 45

FORCES (lb) - Max. Comp./Max. Ten. - All forces 250 (lb) or less except when shown.
 TOP CHORD 10-11=-111/281, 11-12=-135/348, 12-13=-119/302, 13-14=-119/302, 14-15=-135/348, 15-16=-111/281

- NOTES**
- Unbalanced roof live loads have been considered for this design.
 - Wind: ASCE 7-10; Vult=130mph (3-second gust) Vasd=103mph; TCDL=6.0psf; BCDL=6.0psf; h=35ft; Cat. II; Exp B; Enclosed; MWFRS (envelope) exterior zone and C-C Exterior (2) zone; cantilever left and right exposed; end vertical left and right exposed; C-C for members and forces & MWFRS for reactions shown; Lumber DOL=1.60 plate grip DOL=1.60
 - Truss designed for wind loads in the plane of the truss only.
 - All plates are 2x3 MT20 unless otherwise indicated.
 - Gable requires continuous bottom chord bearing.
 - Truss to be fully sheathed from one face or securely braced against lateral movement (i.e. diagonal web).
 - Gable studs spaced at 2-0-0 oc.
 - This truss has been designed for a 10.0 psf bottom chord live load nonconcurrent with any other live loads.
 - * This truss has been designed for a live load of 20.0psf on the bottom chord in all areas where a rectangle 3-06-00 tall by 2-00-00 wide will fit between the bottom chord and any other members.
 - Provide mechanical connection (by others) of truss to bearing plate capable of withstanding 100 lb uplift at joint(s) 45, 26, 37, 38, 39, 40, 41, 42, 43, 34, 33, 32, 31, 30, 29, 28 except (jt=lb) 44=154, 27=138.
 - This truss is designed in accordance with the 2015 International Residential Code sections R502.11.1 and R802.10.2 and referenced standard ANSI/TPI 1.



This design is based upon parameters shown, and is for an individual building component to be installed and loaded vertically. Applicability of design parameters and proper incorporation of component is responsibility of the Building Designer. Building Designer shall verify all design information on this sheet for conformance with conditions and requirements of the specific building and governing codes and ordinances. Building Designer accepts responsibility for the correctness or accuracy of the design information as it may relate to a specific building. Certification is valid only when truss is fabricated by a UFPI plant. Bracing shown is for lateral support of truss members only and does not replace erection and permanent bracing. Refer to Building Component Safety Information (BCSI) for general guidance regarding storage, erection and bracing available from SBCA and Truss Plate Institute.



Job 72284865	Truss A2	Truss Type Truss	Qty 7	Ply 1	PROF BLD SUPPLY 1000 PLAN # 4 RF Job Reference (optional)
-----------------	-------------	---------------------	----------	----------	--

UFP Mid Atlantic LLC, 5631 S. NC 62, Burlington, NC, Micah Clayton

Run: 8.51 S Oct 22 2021 Print: 8.510 S Oct 22 2021 MiTek Industries, Inc. Wed Jul 13 17:08:45

Page: 1

ID:pN15YSds96dmsqp4S7Hy2ByibU7-or9fuA9ZNTxhDE5ncGAPp_77OPiuNwpiDw?qXMyyQqW

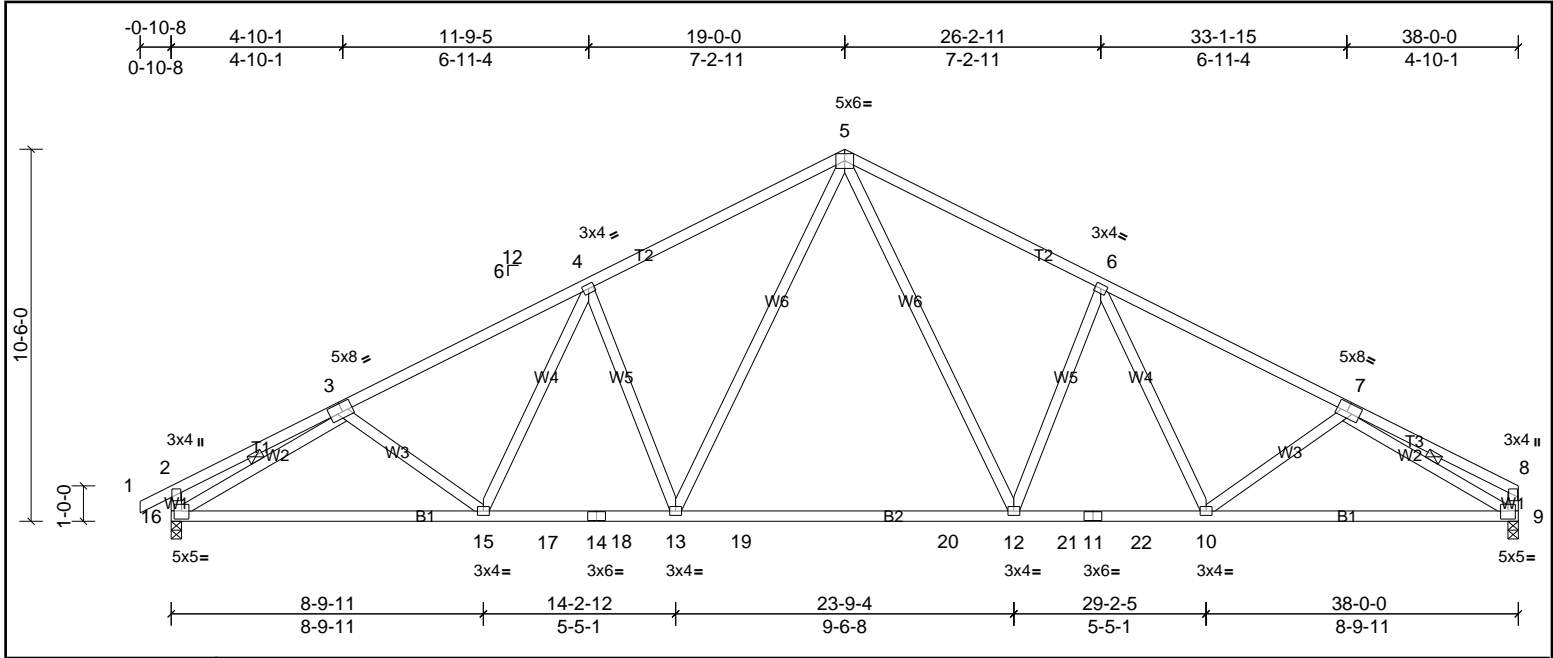


Plate Offsets (X, Y): [3:0-3-8,0-3-0], [7:0-3-8,0-3-0], [9:0-2-8,0-2-12], [16:0-2-8,0-2-12]

Loading	(psf)	Spacing	2-0-0	CSI	DEFL	in	(loc)	l/defl	L/d	PLATES	GRIP	
TCLL (roof)	20.0	Plate Grip DOL	1.15	TC	0.78	Vert(LL)	-0.32	12-13	>999	240	MT20	244/190
TCDL	10.0	Lumber DOL	1.15	BC	0.85	Vert(CT)	-0.61	12-13	>746	180		
BCLL	0.0*	Rep Stress Incr	YES	WB	0.56	Horz(CT)	0.11	9	n/a	n/a		
BCDL	10.0	Code	IRC2015/TPI2014	Matrix-MSH							Weight: 227 lb	FT = 20%

LUMBER	BRACING
TOP CHORD 2x4 SP No.2	TOP CHORD Structural wood sheathing directly applied, except end verticals.
BOT CHORD 2x4 SP No.2 *Except* 14-11:2x4 SP No.1	BOT CHORD Rigid ceiling directly applied or 7-11-7 oc bracing.
WEBS 2x4 SP No.3	WEBS 1 Row at midpt 3-16, 7-9

REACTIONS (lb/size) 9=1508/0-3-8, (min. 0-1-12), 16=1570/0-3-8, (min. 0-1-14)
 Max Horiz 16=159 (LC 7)
 Max Uplift 9=203 (LC 11), 16=226 (LC 10)

FORCES (lb) - Max. Comp./Max. Ten. - All forces 250 (lb) or less except when shown.
 TOP CHORD 2-3=-355/102, 3-4=-2276/659, 4-5=-2059/718, 5-6=-2060/718, 6-7=-2282/661, 7-8=-318/75, 2-16=-329/166
 BOT CHORD 15-16=-508/1995, 15-17=-365/1916, 14-17=-365/1916, 14-18=-365/1916, 13-18=-365/1916, 13-19=-157/1426, 19-20=-157/1426, 12-20=-157/1426, 12-21=-365/1917, 11-21=-365/1917, 11-22=-365/1917, 10-22=-365/1917, 9-10=-513/2007
 WEBS 3-16=-2081/598, 4-13=-561/317, 5-13=-229/814, 5-12=-229/816, 6-12=-563/318, 7-9=-2132/630

- NOTES**
- Unbalanced roof live loads have been considered for this design.
 - Wind: ASCE 7-10; Vult=130mph (3-second gust) Vasd=103mph; TCDL=6.0psf; BCDL=6.0psf; h=35ft; Cat. II; Exp B; Enclosed; MWFRS (envelope) exterior zone and C-C Exterior (2) zone; cantilever left and right exposed; end vertical left and right exposed; C-C for members and forces & MWFRS for reactions shown; Lumber DOL=1.60 plate grip DOL=1.60
 - All plates are 3x4 MT20 unless otherwise indicated.
 - This truss has been designed for a 10.0 psf bottom chord live load nonconcurrent with any other live loads.
 - * This truss has been designed for a live load of 20.0psf on the bottom chord in all areas where a rectangle 3-06-00 tall by 2-00-00 wide will fit between the bottom chord and any other members, with BCDL = 10.0psf.
 - Provide mechanical connection (by others) of truss to bearing plate capable of withstanding 226 lb uplift at joint 16 and 203 lb uplift at joint 9.
 - This truss is designed in accordance with the 2015 International Residential Code sections R502.11.1 and R802.10.2 and referenced standard ANSI/TPI 1.



This design is based upon parameters shown, and is for an individual building component to be installed and loaded vertically. Applicability of design parameters and proper incorporation of component is responsibility of the Building Designer. Building Designer shall verify all design information on this sheet for conformance with conditions and requirements of the specific building and governing codes and ordinances. Building Designer accepts responsibility for the correctness or accuracy of the design information as it may relate to a specific building. Certification is valid only when truss is fabricated by a UFPI plant. Bracing shown is for lateral support of truss members only and does not replace erection and permanent bracing. Refer to Building Component Safety Information (BCSI) for general guidance regarding storage, erection and bracing available from SBCA and Truss Plate Institute.



Job 72284865	Truss A3	Truss Type Truss	Qty 2	Ply 1	PROF BLD SUPPLY 1000 PLAN # 4 RF Job Reference (optional)
-----------------	-------------	---------------------	----------	----------	--

UFP Mid Atlantic LLC, 5631 S. NC 62, Burlington, NC, Micah Clayton

Run: 8.51 S Oct 22 2021 Print: 8.510 S Oct 22 2021 MiTek Industries, Inc. Wed Jul 13 17:08:45

Page: 1

ID:ae_hfNWDHLU2HSdMQkrAlyibUG-or9fuA9ZNTxhDE5ncGAPp_76RPIKNwkiDw?qXMyyQqW

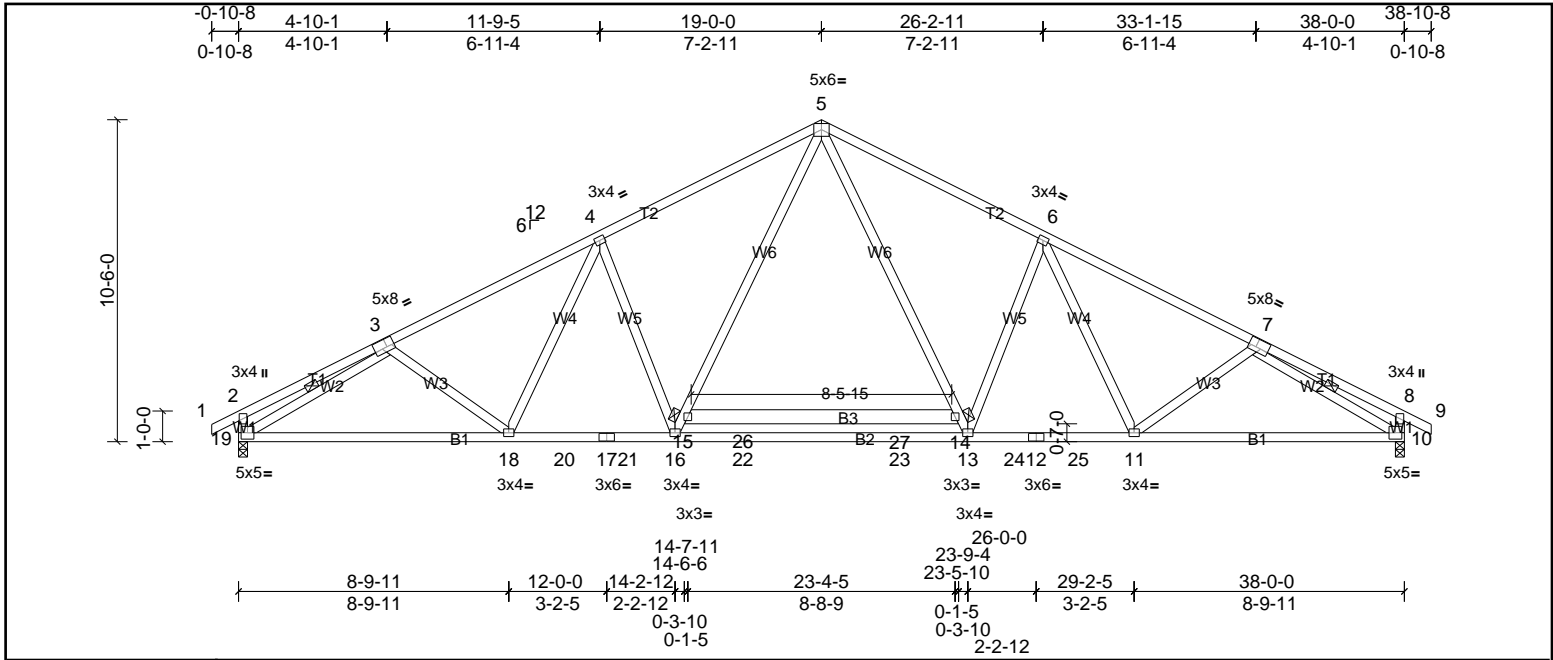


Plate Offsets (X, Y): [3:0-3-0,0-3-4], [7:0-3-0,0-3-4]

Loading	(psf)	Spacing	2-0-0	CSI	DEFL	in	(loc)	l/defl	L/d	PLATES	GRIP	
TCLL (roof)	20.0	Plate Grip DOL	1.15	TC	0.84	Vert(LL)	-0.31	13-16	>999	240	MT20	244/190
TCDL	10.0	Lumber DOL	1.15	BC	0.89	Vert(CT)	-0.63	13-16	>724	180		
BCLL	0.0*	Rep Stress Incr	YES	WB	0.57	Horz(CT)	0.12	10	n/a	n/a		
BCDL	10.0	Code	IRC2015/TPI2014	Matrix-MSH							Weight: 249 lb	FT = 20%

LUMBER		BRACING	
TOP CHORD	2x4 SP No.2	TOP CHORD	Structural wood sheathing directly applied, except end verticals.
BOT CHORD	2x4 SP No.2 *Except* 17-12:2x4 SP No.1, 15-14:2x6 SP No.2	BOT CHORD	Rigid ceiling directly applied or 9-1-5 oc bracing. Except:
WEBS	2x4 SP No.3	WEBS	6-0-0 oc bracing: 14-15
REACTIONS	(lb/size) 10=1660/0-3-8, (min. 0-2-0), 19=1660/0-3-8, (min. 0-2-0)		1 Row at midpt
	Max Horiz 19=155 (LC 9)		3-19, 7-10
	Max Uplift 10=-172 (LC 11), 19=-172 (LC 10)		
	Max Grav 10=1677 (LC 2), 19=1677 (LC 2)		
FORCES	(lb) - Max. Comp./Max. Ten. - All forces 250 (lb) or less except when shown.		
TOP CHORD	2-3=-366/96, 3-4=-2570/555, 4-5=-2371/608, 5-6=-2371/608, 6-7=-2570/555, 7-8=-366/96, 2-19=-335/162, 8-10=-335/162		
BOT CHORD	18-19=-390/2207, 18-20=-232/2190, 17-20=-232/2190, 17-21=-232/2190, 16-21=-232/2190, 16-22=-39/1750, 22-23=-39/1750, 13-23=-39/1750, 13-24=-232/2190, 12-24=-232/2190, 12-25=-232/2190, 11-25=-232/2190, 10-11=-390/2196		
WEBS	3-19=-2311/507, 7-10=-2311/507, 4-16=-552/323, 15-16=-227/772, 5-15=-175/970, 5-14=-175/970, 13-14=-227/772, 6-13=-552/323		

- NOTES**
- Unbalanced roof live loads have been considered for this design.
 - Wind: ASCE 7-10; Vult=130mph (3-second gust) Vasd=103mph; TCCL=6.0psf; BCDL=6.0psf; h=35ft; Cat. II; Exp B; Enclosed; MWFRS (envelope) exterior zone and C-C Exterior (2) zone; cantilever left and right exposed; end vertical left and right exposed; C-C for members and forces & MWFRS for reactions shown; Lumber DOL=1.60 plate grip DOL=1.60
 - All plates are 3x4 MT20 unless otherwise indicated.
 - This truss has been designed for a 10.0 psf bottom chord live load nonconcurrent with any other live loads.
 - * This truss has been designed for a live load of 20.0psf on the bottom chord in all areas where a rectangle 3-06-00 tall by 2-00-00 wide will fit between the bottom chord and any other members, with BCDL = 10.0psf.
 - Provide mechanical connection (by others) of truss to bearing plate capable of withstanding 172 lb uplift at joint 19 and 172 lb uplift at joint 10.
 - This truss is designed in accordance with the 2015 International Residential Code sections R502.11.1 and R802.10.2 and referenced standard ANSI/TPI 1.



This design is based upon parameters shown, and is for an individual building component to be installed and loaded vertically. Applicability of design parameters and proper incorporation of component is responsibility of the Building Designer. Building Designer shall verify all design information on this sheet for conformance with conditions and requirements of the specific building and governing codes and ordinances. Building Designer accepts responsibility for the correctness or accuracy of the design information as it may relate to a specific building. Certification is valid only when truss is fabricated by a UFPI plant. Bracing shown is for lateral support of truss members only and does not replace erection and permanent bracing. Refer to Building Component Safety Information (BCSI) for general guidance regarding storage, erection and bracing available from SBCA and Truss Plate Institute.



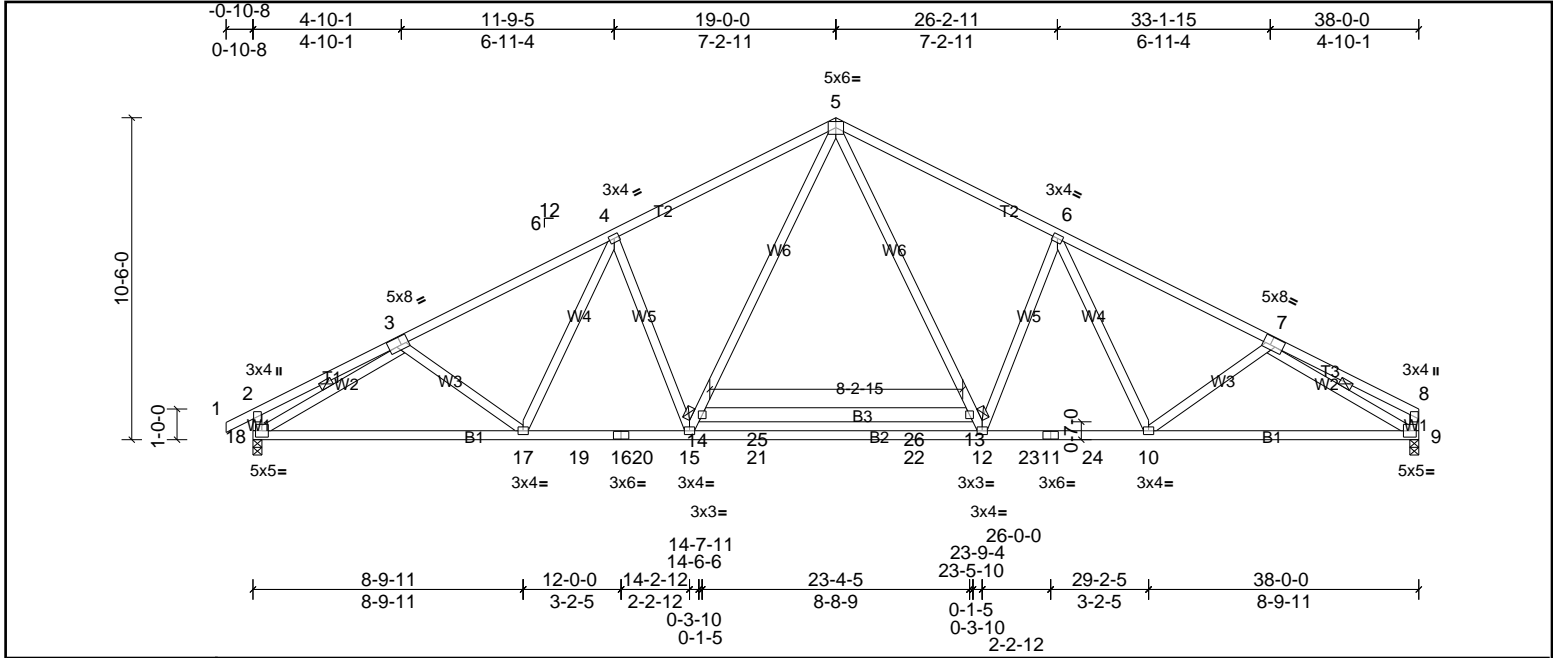
Job 72284865	Truss A4	Truss Type Truss	Qty 7	Ply 1	PROF BLD SUPPLY 1000 PLAN # 4 RF Job Reference (optional)
-----------------	-------------	---------------------	----------	----------	--

UFP Mid Atlantic LLC, 5631 S. NC 62, Burlington, NC, Micah Clayton

Run: 8.51 S Oct 22 2021 Print: 8.510 S Oct 22 2021 MiTek Industries, Inc. Wed Jul 13 17:08:46

Page: 1

ID:SPDCVkJZkZ?Tl3w7fahnL8yibUC-G1j15WAB8n3YrOfzA_heMBGh?o2X6LorRalO3oyyQqV



Loading	(psf)	Spacing	2-0-0	CSI	DEFLL	in	(loc)	l/defl	L/d	PLATES	GRIP	
TCLL (roof)	20.0	Plate Grip DOL	1.15	TC	0.85	Vert(LL)	-0.32	12-15	>999	240	MT20	244/190
TCDL	10.0	Lumber DOL	1.15	BC	0.89	Vert(CT)	-0.63	12-15	>723	180		
BCLL	0.0*	Rep Stress Incr	YES	WB	0.58	Horz(CT)	0.12	9	n/a	n/a		
BCDL	10.0	Code	IRC2015/TPI2014	Matrix-MSH							Weight: 248 lb	FT = 20%

LUMBER		BRACING	
TOP CHORD	2x4 SP No.2	TOP CHORD	Structural wood sheathing directly applied, except end verticals.
BOT CHORD	2x4 SP No.2 *Except* 16-11:2x4 SP No.1, 14-13:2x6 SP No.2	BOT CHORD	Rigid ceiling directly applied or 8-7-14 oc bracing. Except:
WEBS	2x4 SP No.3	WEBS	6-0-0 oc bracing: 13-14
REACTIONS	(lb/size) 9=1598/0-3-8, (min. 0-1-15), 18=1661/0-3-8, (min. 0-2-0)		1 Row at midpt
	Max Horiz 18=159 (LC 9)		3-18, 7-9
	Max Uplift 9=149 (LC 11), 18=172 (LC 10)		
	Max Grav 9=1625 (LC 2), 18=1678 (LC 2)		
FORCES	(lb) - Max. Comp./Max. Ten. - All forces 250 (lb) or less except when shown.		
TOP CHORD	2-3=-366/96, 3-4=-2571/556, 4-5=-2372/608, 5-6=-2373/609, 6-7=-2576/558, 7-8=-322/70, 2-18=-335/162		
BOT CHORD	17-18=-427/2201, 17-19=-269/2191, 16-19=-269/2191, 16-20=-269/2191, 15-20=-269/2191, 15-21=-75/1751, 21-22=-75/1751, 12-22=-75/1751, 12-23=-270/2192, 11-23=-270/2192, 11-24=-270/2192, 10-24=-270/2192, 9-10=-432/2207		
WEBS	3-18=-2312/508, 7-9=-2367/538, 4-15=-552/323, 14-15=-227/772, 5-14=-175/970, 5-13=-176/971, 12-13=-228/774, 6-12=-553/324		

- NOTES**
- Unbalanced roof live loads have been considered for this design.
 - Wind: ASCE 7-10; Vult=130mph (3-second gust) Vasd=103mph; TCCL=6.0psf; BCDL=6.0psf; h=35ft; Cat. II; Exp B; Enclosed; MWFRS (envelope) exterior zone and C-C Exterior (2) zone; cantilever left and right exposed; end vertical left and right exposed; C-C for members and forces & MWFRS for reactions shown; Lumber DOL=1.60 plate grip DOL=1.60
 - All plates are 3x4 MT20 unless otherwise indicated.
 - This truss has been designed for a 10.0 psf bottom chord live load nonconcurrent with any other live loads.
 - * This truss has been designed for a live load of 20.0psf on the bottom chord in all areas where a rectangle 3-06-00 tall by 2-00-00 wide will fit between the bottom chord and any other members, with BCDL = 10.0psf.
 - Provide mechanical connection (by others) of truss to bearing plate capable of withstanding 172 lb uplift at joint 18 and 149 lb uplift at joint 9.
 - This truss is designed in accordance with the 2015 International Residential Code sections R502.11.1 and R802.10.2 and referenced standard ANSI/TPI 1.



This design is based upon parameters shown, and is for an individual building component to be installed and loaded vertically. Applicability of design parameters and proper incorporation of component is responsibility of the Building Designer. Building Designer shall verify all design information on this sheet for conformance with conditions and requirements of the specific building and governing codes and ordinances. Building Designer accepts responsibility for the correctness or accuracy of the design information as it may relate to a specific building. Certification is valid only when truss is fabricated by a UFPI plant. Bracing shown is for lateral support of truss members only and does not replace erection and permanent bracing. Refer to Building Component Safety Information (BCSI) for general guidance regarding storage, erection and bracing available from SBCA and Truss Plate Institute.



Job 72284865	Truss A5G	Truss Type Truss	Qty 1	Ply 1	PROF BLD SUPPLY 1000 PLAN # 4 RF Job Reference (optional)
-----------------	--------------	---------------------	----------	----------	--

UFP Mid Atlantic LLC, 5631 S. NC 62, Burlington, NC, Micah Clayton

Run: 8.51 S Oct 22 2021 Print: 8.510 S Oct 22 2021 MiTek Industries, Inc. Wed Jul 13 17:08:46

Page: 1

ID:HZbTmoeUwPldT_OH0roBaFyibU6-G1j15WAB8n3YrOfzA_heMBgR7oEn6SkrRaIO3oyyQqV

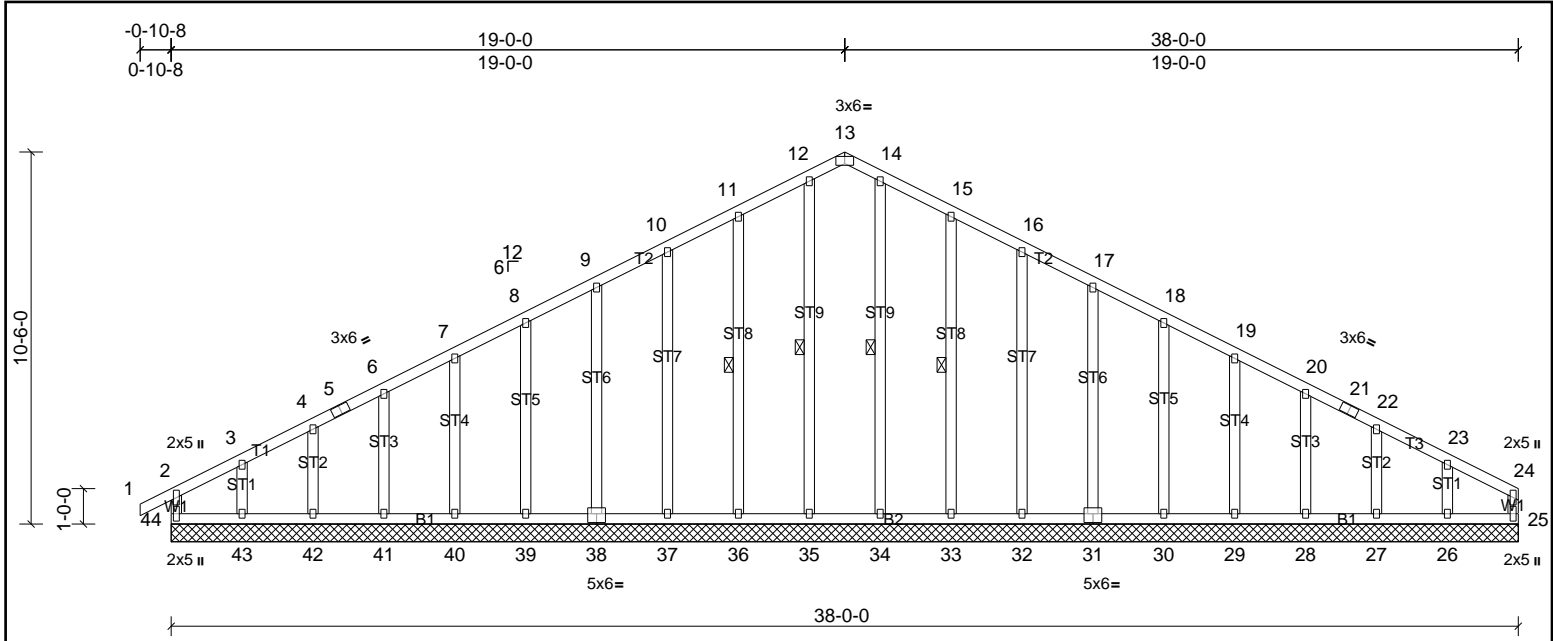


Plate Offsets (X, Y): [13:0-3-0,Edge], [31:0-3-0,0-3-0], [38:0-3-0,0-3-0]

Loading	(psf)	Spacing	2-0-0	CSI	DEFL	in	(loc)	l/defl	L/d	PLATES	GRIP	
TCLL (roof)	20.0	Plate Grip DOL	1.15	TC	0.20	Vert(LL)	n/a	-	n/a	999	MT20	244/190
TCDL	10.0	Lumber DOL	1.15	BC	0.11	Vert(CT)	n/a	-	n/a	999		
BCLL	0.0*	Rep Stress Incr	YES	WB	0.14	Horz(CT)	0.01	25	n/a	n/a		
BCDL	10.0	Code	IRC2015/TPI2014	Matrix-MR							Weight: 269 lb	FT = 20%

LUMBER	BRACING
TOP CHORD 2x4 SP No.2	TOP CHORD Structural wood sheathing directly applied or 6-0-0 oc purlins, except end verticals.
BOT CHORD 2x4 SP No.2	BOT CHORD Rigid ceiling directly applied or 10-0-0 oc bracing.
WEBS 2x4 SP No.3	WEBS 1 Row at midpt
OTHERS 2x4 SP No.3	

REACTIONS All bearings 38-0-0.
 (lb) - Max Horiz 44=159 (LC 7)
 Max Uplift All uplift 100 (lb) or less at joint(s) 25, 27, 28, 29, 30, 31, 32, 33, 36, 37, 38, 39, 40, 41, 42, 44 except 26=139 (LC 11), 43=156 (LC 10)
 Max Grav All reactions 250 (lb) or less at joint(s) 25, 26, 27, 28, 29, 30, 31, 32, 33, 34, 35, 36, 37, 38, 39, 40, 41, 42, 43, 44

FORCES (lb) - Max. Comp./Max. Ten. - All forces 250 (lb) or less except when shown.
 TOP CHORD 10-11=-116/279, 11-12=-140/346, 12-13=-123/300, 13-14=-123/300, 14-15=-140/346, 15-16=-116/279

- NOTES**
- Unbalanced roof live loads have been considered for this design.
 - Wind: ASCE 7-10; Vult=130mph (3-second gust) Vasd=103mph; TCCL=6.0psf; BCDL=6.0psf; h=35ft; Cat. II; Exp B; Enclosed; MWFRS (envelope) exterior zone and C-C Exterior (2) zone; cantilever left and right exposed; end vertical left and right exposed; C-C for members and forces & MWFRS for reactions shown; Lumber DOL=1.60 plate grip DOL=1.60
 - Truss designed for wind loads in the plane of the truss only.
 - All plates are 2x3 MT20 unless otherwise indicated.
 - Gable requires continuous bottom chord bearing.
 - Truss to be fully sheathed from one face or securely braced against lateral movement (i.e. diagonal web).
 - Gable studs spaced at 2-0-0 oc.
 - This truss has been designed for a 10.0 psf bottom chord live load nonconcurrent with any other live loads.
 - * This truss has been designed for a live load of 20.0psf on the bottom chord in all areas where a rectangle 3-06-00 tall by 2-00-00 wide will fit between the bottom chord and any other members.
 - Provide mechanical connection (by others) of truss to bearing plate capable of withstanding 100 lb uplift at joint(s) 44, 25, 36, 37, 38, 39, 40, 41, 42, 33, 32, 31, 30, 29, 28, 27 except (jt=lb) 43=156, 26=138.
 - This truss is designed in accordance with the 2015 International Residential Code sections R502.11.1 and R802.10.2 and referenced standard ANSI/TPI 1.



This design is based upon parameters shown, and is for an individual building component to be installed and loaded vertically. Applicability of design parameters and proper incorporation of component is responsibility of the Building Designer. Building Designer shall verify all design information on this sheet for conformance with conditions and requirements of the specific building and governing codes and ordinances. Building Designer accepts responsibility for the correctness or accuracy of the design information as it may relate to a specific building. Certification is valid only when truss is fabricated by a UFPI plant. Bracing shown is for lateral support of truss members only and does not replace erection and permanent bracing. Refer to Building Component Safety Information (BCSI) for general guidance regarding storage, erection and bracing available from SBCA and Truss Plate Institute.



Job 72284865	Truss B1G	Truss Type Truss	Qty 1	Ply 1	PROF BLD SUPPLY 1000 PLAN # 4 RF Job Reference (optional)
-----------------	--------------	---------------------	----------	----------	--

UFP Mid Atlantic LLC, 5631 S. NC 62, Burlington, NC, Micah Clayton

Run: 8.51 S Oct 22 2021 Print: 8.510 S Oct 22 2021 MiTek Industries, Inc. Wed Jul 13 17:08:46

Page: 1

ID:2qY4tjXr2ecuubCY_S74jVyibUF-G1j15WAB8n3YrOfzA_heMBgS6oE26TnrRalO3oyyQqV

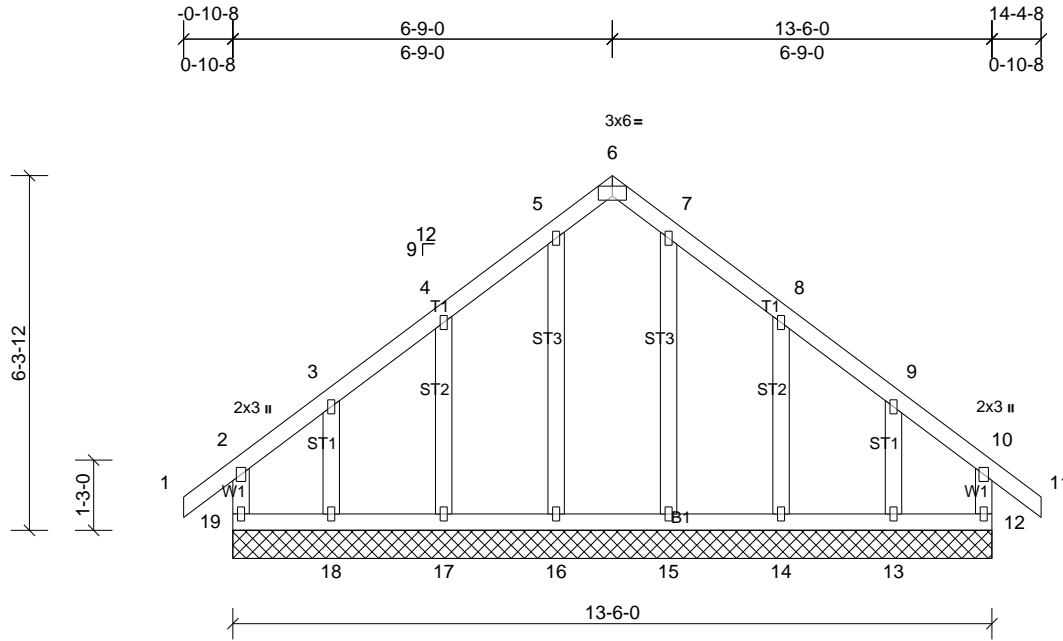


Plate Offsets (X, Y): [6:0-3-0,Edge]

Loading	(psf)	Spacing	2-0-0	CSI	DEFL	in	(loc)	l/defl	L/d	PLATES	GRIP	
TCLL (roof)	20.0	Plate Grip DOL	1.15	TC	0.14	Vert(LL)	n/a	-	n/a	999	MT20	244/190
TCDL	10.0	Lumber DOL	1.15	BC	0.09	Vert(CT)	n/a	-	n/a	999		
BCLL	0.0*	Rep Stress Incr	YES	WB	0.07	Horz(CT)	0.00	12	n/a	n/a		
BCDL	10.0	Code	IRC2015/TPI2014	Matrix-MR							Weight: 83 lb	FT = 20%

LUMBER
TOP CHORD 2x4 SP No.2
BOT CHORD 2x4 SP No.2
WEBS 2x4 SP No.3
OTHERS 2x4 SP No.3

BRACING
TOP CHORD Structural wood sheathing directly applied or 6-0-0 oc purlins, except end verticals.
BOT CHORD Rigid ceiling directly applied or 10-0-0 oc bracing.

REACTIONS All bearings 13-6-0.
(lb) - Max Horiz 19=-187 (LC 8)
Max Uplift All uplift 100 (lb) or less at joint(s) 12, 14, 17, 19 except 13=-134 (LC 11), 18=-137 (LC 10)
Max Grav All reactions 250 (lb) or less at joint(s) 12, 13, 14, 15, 16, 17, 18, 19

FORCES (lb) - Max. Comp./Max. Ten. - All forces 250 (lb) or less except when shown.

- NOTES**
- Unbalanced roof live loads have been considered for this design.
 - Wind: ASCE 7-10; Vult=130mph (3-second gust) Vasd=103mph; TCCL=6.0psf; BCDL=6.0psf; h=35ft; Cat. II; Exp B; Enclosed; MWFRS (envelope) exterior zone and C-C Exterior (2) zone; cantilever left and right exposed; end vertical left and right exposed; C-C for members and forces & MWFRS for reactions shown; Lumber DOL=1.60 plate grip DOL=1.60
 - Truss designed for wind loads in the plane of the truss only.
 - All plates are 1.5x3 MT20 unless otherwise indicated.
 - Gable requires continuous bottom chord bearing.
 - Truss to be fully sheathed from one face or securely braced against lateral movement (i.e. diagonal web).
 - Gable studs spaced at 2-0-0 oc.
 - This truss has been designed for a 10.0 psf bottom chord live load nonconcurrent with any other live loads.
 - * This truss has been designed for a live load of 20.0psf on the bottom chord in all areas where a rectangle 3-06-00 tall by 2-00-00 wide will fit between the bottom chord and any other members.
 - Provide mechanical connection (by others) of truss to bearing plate capable of withstanding 100 lb uplift at joint(s) 19, 12, 17, 14 except (jt=lb) 18=136, 13=133.
 - This truss is designed in accordance with the 2015 International Residential Code sections R502.11.1 and R802.10.2 and referenced standard ANSI/TPI 1.



This design is based upon parameters shown, and is for an individual building component to be installed and loaded vertically. Applicability of design parameters and proper incorporation of component is responsibility of the Building Designer. Building Designer shall verify all design information on this sheet for conformance with conditions and requirements of the specific building and governing codes and ordinances. Building Designer accepts responsibility for the correctness or accuracy of the design information as it may relate to a specific building. Certification is valid only when truss is fabricated by a UFPI plant. Bracing shown is for lateral support of truss members only and does not replace erection and permanent bracing. Refer to Building Component Safety Information (BCSI) for general guidance regarding storage, erection and bracing available from SBCA and Truss Plate Institute.



Job 72284865	Truss C1	Truss Type Truss	Qty 2	Ply 1	PROF BLD SUPPLY 1000 PLAN # 4 RF Job Reference (optional)
-----------------	-------------	---------------------	----------	----------	--

UFP Mid Atlantic LLC, 5631 S. NC 62, Burlington, NC, Micah Clayton

Run: 8.51 S Oct 22 2021 Print: 8.510 S Oct 22 2021 MiTek Industries, Inc. Wed Jul 13 17:08:46

Page: 1

ID:W16S43YTPyIIWmkY9fGjyibUE-G1j15WAB8n3YrOfzA_heMBglVoAl6TArRaIO3oyyQqV

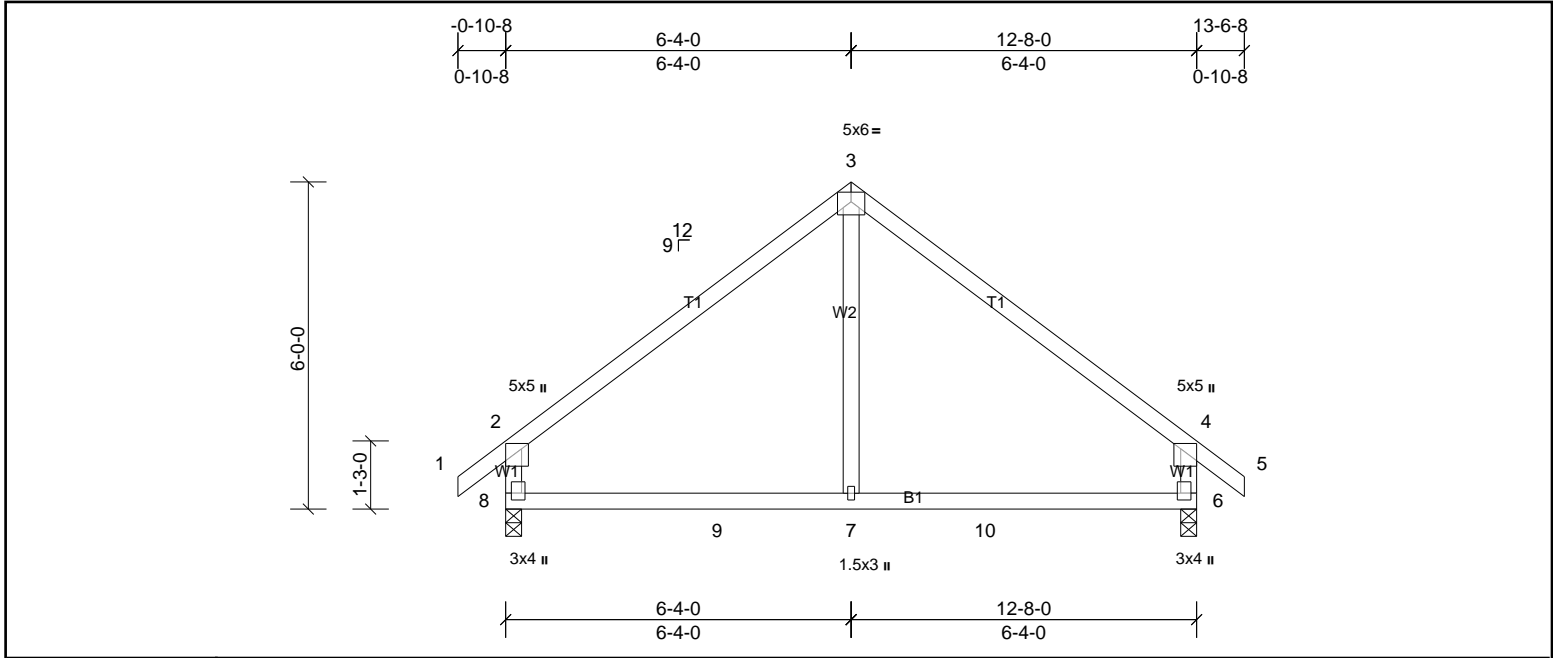


Plate Offsets (X, Y): [6:0-1-8,0-0-12], [8:0-1-8,0-1-4]

Loading	(psf)	Spacing	2-0-0	CSI	DEFL	in	(loc)	l/defl	L/d	PLATES	GRIP	
TCLL (roof)	20.0	Plate Grip DOL	1.15	TC	0.82	Vert(LL)	-0.04	7-8	>999	240	MT20	244/190
TCDL	10.0	Lumber DOL	1.15	BC	0.33	Vert(CT)	-0.08	7-8	>999	180		
BCLL	0.0*	Rep Stress Incr	YES	WB	0.11	Horz(CT)	0.01	6	n/a	n/a		
BCDL	10.0	Code	IRC2015/TPI2014	Matrix-MR							Weight: 57 lb	FT = 20%

LUMBER		BRACING	
TOP CHORD	2x4 SP No.2	TOP CHORD	Structural wood sheathing directly applied or 6-0-0 oc purlins, except end verticals.
BOT CHORD	2x4 SP No.2	BOT CHORD	Rigid ceiling directly applied or 10-0-0 oc bracing.
WEBS	2x4 SP No.3		

REACTIONS	(lb/size)	6=556/0-3-8, (min. 0-1-8), 8=556/0-3-8, (min. 0-1-8)
Max Horiz	8=-179 (LC 8)	
Max Uplift	6=-77 (LC 11), 8=-77 (LC 10)	
Max Grav	6=577 (LC 18), 8=577 (LC 17)	

FORCES	(lb) - Max. Comp./Max. Ten. - All forces 250 (lb) or less except when shown.
TOP CHORD	2-3=-547/140, 3-4=-547/140, 2-8=-503/200, 4-6=-503/200
BOT CHORD	8-9=-4/385, 7-9=-4/385, 7-10=-4/385, 6-10=-4/385
WEBS	3-7=0/279

- NOTES**
- Unbalanced roof live loads have been considered for this design.
 - Wind: ASCE 7-10; Vult=130mph (3-second gust) Vasd=103mph; TCCL=6.0psf; BCDL=6.0psf; h=35ft; Cat. II; Exp B; Enclosed; MWFRS (envelope) exterior zone and C-C Exterior (2) zone; cantilever left and right exposed; end vertical left and right exposed; C-C for members and forces & MWFRS for reactions shown; Lumber DOL=1.60 plate grip DOL=1.60
 - This truss has been designed for a 10.0 psf bottom chord live load nonconcurrent with any other live loads.
 - * This truss has been designed for a live load of 20.0psf on the bottom chord in all areas where a rectangle 3-06-00 tall by 2-00-00 wide will fit between the bottom chord and any other members, with BCDL = 10.0psf.
 - Provide mechanical connection (by others) of truss to bearing plate capable of withstanding 77 lb uplift at joint 8 and 77 lb uplift at joint 6.
 - This truss is designed in accordance with the 2015 International Residential Code sections R502.11.1 and R802.10.2 and referenced standard ANSI/TPI 1.



This design is based upon parameters shown, and is for an individual building component to be installed and loaded vertically. Applicability of design parameters and proper incorporation of component is responsibility of the Building Designer. Building Designer shall verify all design information on this sheet for conformance with conditions and requirements of the specific building and governing codes and ordinances. Building Designer accepts responsibility for the correctness or accuracy of the design information as it may relate to a specific building. Certification is valid only when truss is fabricated by a UFPI plant. Bracing shown is for lateral support of truss members only and does not replace erection and permanent bracing. Refer to Building Component Safety Information (BCSI) for general guidance regarding storage, erection and bracing available from SBCA and Truss Plate Institute.



Job 72284865	Truss C1G	Truss Type Truss	Qty 1	Ply 1	PROF BLD SUPPLY 1000 PLAN # 4 RF Job Reference (optional)
-----------------	--------------	---------------------	----------	----------	--

UFP Mid Atlantic LLC, 5631 S. NC 62, Burlington, NC, Micah Clayton

Run: 8.51 S Oct 22 2021 Print: 8.510 S Oct 22 2021 MiTek Industries, Inc. Wed Jul 13 17:08:47

Page: 1

ID:2qY4tjXr2ecuubCY_S74jVybUF-kEHPJsBpv5BOTYE9khCtuPCdrCaSrxC?gDUxbEyyQqU

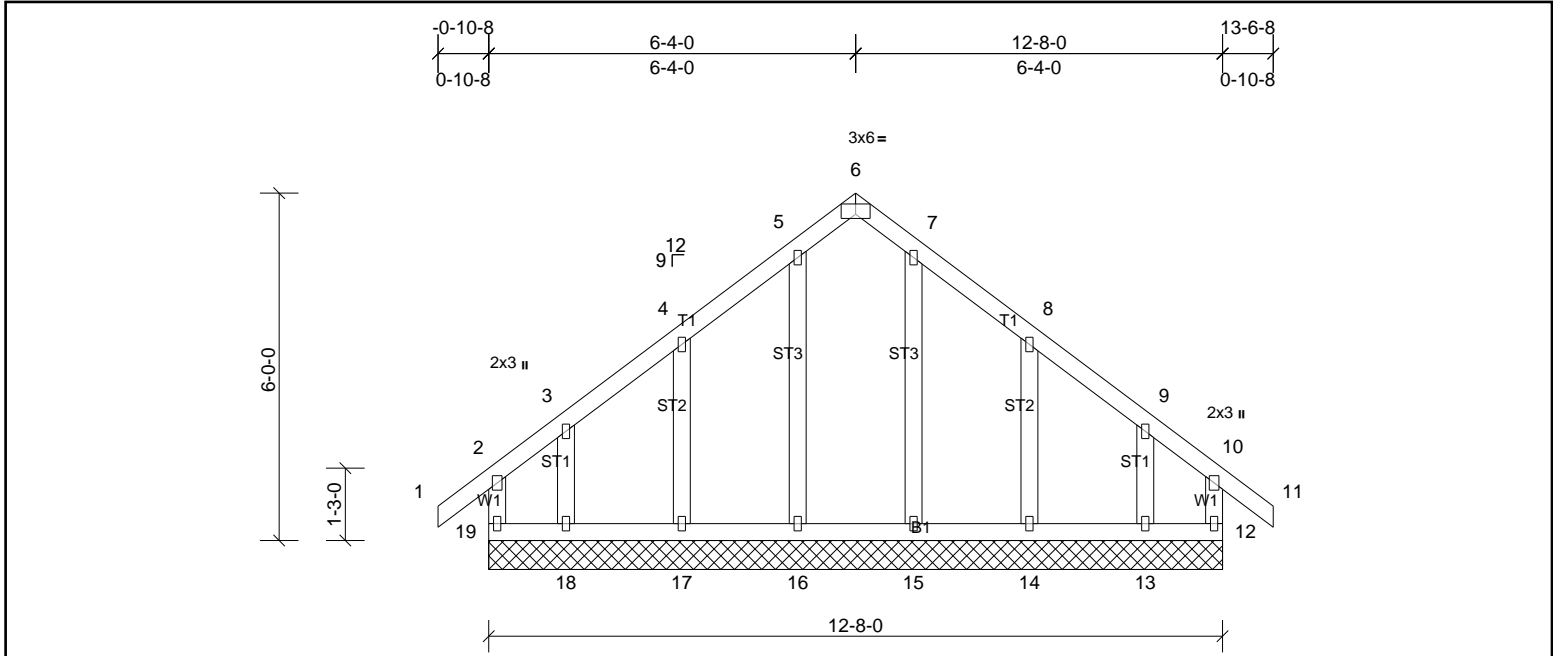


Plate Offsets (X, Y): [6:0-3-0,Edge]

Loading	(psf)	Spacing	2-0-0	CSI	DEFLL	in	(loc)	l/defl	L/d	PLATES	GRIP	
TCLL (roof)	20.0	Plate Grip DOL	1.15	TC	0.14	Vert(LL)	n/a	-	n/a	999	MT20	244/190
TCDL	10.0	Lumber DOL	1.15	BC	0.08	Vert(CT)	n/a	-	n/a	999		
BCLL	0.0*	Rep Stress Incr	YES	WB	0.06	Horz(CT)	0.00	12	n/a	n/a		
BCDL	10.0	Code	IRC2015/TPI2014	Matrix-MR							Weight: 77 lb	FT = 20%

LUMBER		BRACING	
TOP CHORD	2x4 SP No.2	TOP CHORD	Structural wood sheathing directly applied or 6-0-0 oc purlins, except end verticals.
BOT CHORD	2x4 SP No.2	BOT CHORD	Rigid ceiling directly applied or 6-0-0 oc bracing.
WEBS	2x4 SP No.3		
OTHERS	2x4 SP No.3		

REACTIONS
 All bearings 12-8-0.
 (lb) - Max Horiz 19=-179 (LC 8)
 Max Uplift All uplift 100 (lb) or less at joint(s) 12, 14, 17, 19 except 13=-138 (LC 11), 18=-141 (LC 10)
 Max Grav All reactions 250 (lb) or less at joint(s) 12, 13, 14, 15, 16, 17, 18, 19

FORCES
 (lb) - Max. Comp./Max. Ten. - All forces 250 (lb) or less except when shown.

- NOTES**
- 1) Unbalanced roof live loads have been considered for this design.
 - 2) Wind: ASCE 7-10; Vult=130mph (3-second gust) Vasd=103mph; TCCL=6.0psf; BCDL=6.0psf; h=35ft; Cat. II; Exp B; Enclosed; MWFRS (envelope) exterior zone and C-C Exterior (2) zone; cantilever left and right exposed; end vertical left and right exposed; C-C for members and forces & MWFRS for reactions shown; Lumber DOL=1.60 plate grip DOL=1.60
 - 3) Truss designed for wind loads in the plane of the truss only.
 - 4) All plates are 1.5x3 MT20 unless otherwise indicated.
 - 5) Gable requires continuous bottom chord bearing.
 - 6) Truss to be fully sheathed from one face or securely braced against lateral movement (i.e. diagonal web).
 - 7) Gable studs spaced at 2-0-0 oc.
 - 8) This truss has been designed for a 10.0 psf bottom chord live load nonconcurrent with any other live loads.
 - 9) * This truss has been designed for a live load of 20.0psf on the bottom chord in all areas where a rectangle 3-06-00 tall by 2-00-00 wide will fit between the bottom chord and any other members.
 - 10) Provide mechanical connection (by others) of truss to bearing plate capable of withstanding 100 lb uplift at joint(s) 19, 12, 17, 14 except (jt=lb) 18=141, 13=137.
 - 11) This truss is designed in accordance with the 2015 International Residential Code sections R502.11.1 and R802.10.2 and referenced standard ANSI/TPI 1.



This design is based upon parameters shown, and is for an individual building component to be installed and loaded vertically. Applicability of design parameters and proper incorporation of component is responsibility of the Building Designer. Building Designer shall verify all design information on this sheet for conformance with conditions and requirements of the specific building and governing codes and ordinances. Building Designer accepts responsibility for the correctness or accuracy of the design information as it may relate to a specific building. Certification is valid only when truss is fabricated by a UFPI plant. Bracing shown is for lateral support of truss members only and does not replace erection and permanent bracing. Refer to Building Component Safety Information (BCSI) for general guidance regarding storage, erection and bracing available from SBCA and Truss Plate Institute.



Job 72284865	Truss C2L	Truss Type Truss	Qty 1	Ply 2	PROF BLD SUPPLY 1000 PLAN # 4 RF Job Reference (optional)
-----------------	--------------	---------------------	----------	----------	--

UFP Mid Atlantic LLC, 5631 S. NC 62, Burlington, NC, Micah Clayton

Run: 8.51 S Oct 22 2021 Print: 8.510 S Oct 22 2021 MiTek Industries, Inc. Wed Jul 13 17:08:47

Page: 1

ID:DyIEBTgkS1?LjIXf7GqffqyibU4-kEHPJsBpv5BOTYE9khCtuPCVVCPurkR?gDUxbEyyQqU

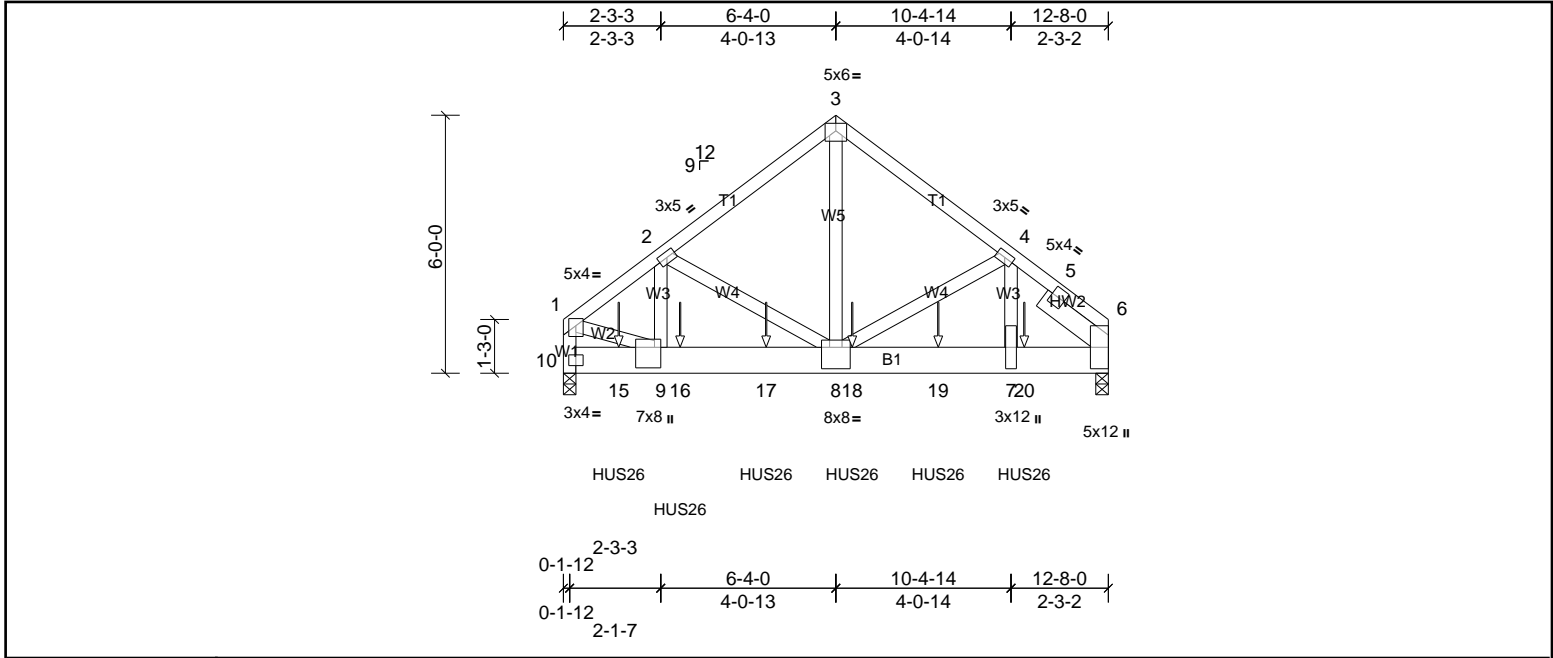


Plate Offsets (X, Y): [1:0-2-0,0-2-0], [8:0-4-0,0-6-0], [9:0-5-12,0-1-12]

Loading	(psf)	Spacing	2-0-0	CSI	DEFL	in	(loc)	l/defl	L/d	PLATES	GRIP	
TCLL (roof)	20.0	Plate Grip DOL	1.15	TC	0.67	Vert(LL)	-0.04	7-8	>999	240	MT20	244/190
TCDL	10.0	Lumber DOL	1.15	BC	0.82	Vert(CT)	-0.09	7-8	>999	180		
BCLL	0.0*	Rep Stress Incr	NO	WB	0.88	Horz(CT)	0.02	6	n/a	n/a		
BCDL	10.0	Code	IRC2015/TPI2014	Matrix-MSH							Weight: 196 lb	FT = 20%

LUMBER		BRACING	
TOP CHORD	2x4 SP No.2	TOP CHORD	Structural wood sheathing directly applied or 4-4-1 oc purlins, except end verticals.
BOT CHORD	2x8 SP No.2	BOT CHORD	Rigid ceiling directly applied or 10-0-0 oc bracing.
WEBS	2x4 SP No.3 *Except* 10-1:2x4 SP SS, 8-3:2x4 SP No.2		
SLIDER	Right 2x6 SP No.2 -- 1-11-0		
REACTIONS	(lb/size)	6=4783/0-3-8, (min. 0-2-13), 10=5686/0-3-8, (min. 0-1-8)	
	Max Horiz	10=-146 (LC 6)	
	Max Uplift	6=-492 (LC 9), 10=-583 (LC 8)	
	Max Grav	6=4795 (LC 2), 10=5713 (LC 2)	
FORCES	(lb) - Max. Comp./Max. Ten. - All forces 250 (lb) or less except when shown.		
TOP CHORD	1-2=-5427/565, 2-3=-4330/511, 3-4=-4309/507, 4-5=-5252/550, 5-6=-2099/260, 1-10=-4933/509		
BOT CHORD	10-15=-154/473, 9-15=-154/473, 9-16=-503/4328, 16-17=-503/4328, 8-17=-503/4328, 8-18=-387/3920, 18-19=-387/3920, 7-19=-387/3920, 7-20=-387/3920, 6-20=-387/3920		
WEBS	1-9=-428/4235, 2-9=-114/1132, 2-8=-1044/209, 3-8=-497/4861, 4-8=-610/168, 4-7=-113/1196		

- NOTES**
- 2-ply truss to be connected together with 10d (0.131"x3") nails as follows:
Top chords connected as follows: 2x4 - 1 row at 0-9-0 oc.
Bottom chords connected as follows: 2x8 - 3 rows staggered at 0-8-0 oc.
Web connected as follows: 2x4 - 1 row at 0-9-0 oc.
 - All loads are considered equally applied to all plies, except if noted as front (F) or back (B) face in the LOAD CASE(S) section. Ply to ply connections have been provided to distribute only loads noted as (F) or (B), unless otherwise indicated.
 - Unbalanced roof live loads have been considered for this design.
 - Wind: ASCE 7-10; Vult=130mph (3-second gust) Vasd=103mph; TCDL=6.0psf; BCDL=6.0psf; h=35ft; Cat. II; Exp B; Enclosed; MWFRS (envelope) exterior zone; cantilever left and right exposed; end vertical left and right exposed; Lumber DOL=1.60 plate grip DOL=1.60
 - This truss has been designed for a 10.0 psf bottom chord live load nonconcurrent with any other live loads.
 - * This truss has been designed for a live load of 20.0psf on the bottom chord in all areas where a rectangle 3-06-00 tall by 2-00-00 wide will fit between the bottom chord and any other members.
 - Bearing at joint(s) 10 considers parallel to grain value using ANSI/TPI 1 angle to grain formula. Building designer should verify capacity of bearing surface.
 - Provide mechanical connection (by others) of truss to bearing plate capable of withstanding 492 lb uplift at joint 6 and 583 lb uplift at joint 10.
 - This truss is designed in accordance with the 2015 International Residential Code sections R502.11.1 and R802.10.2 and referenced standard ANSI/TPI 1.
 - Use MiTek HUS26 (With 14-16d nails into Girder & 6-16d nails into Truss) or equivalent spaced at 2-0-0 oc max. starting at 1-3-7 from the left end to 10-8-9 to connect truss(es) to front face of bottom chord.
 - Fill all nail holes where hanger is in contact with lumber.

LOAD CASE(S) Standard

1) Dead + Roof Live (balanced): Lumber Increase=1.15, Plate Increase=1.15
Uniform Loads (lb/ft)
Vert: 1-3=-60, 3-6=-60, 10-11=-20
Concentrated Loads (lb)
Vert: 15=-1578 (F), 16=-1578 (F), 17=-1578 (F), 18=-1578 (F), 19=-1578 (F), 20=-1578 (F)



This design is based upon parameters shown, and is for an individual building component to be installed and loaded vertically. Applicability of design parameters and proper incorporation of component is responsibility of the Building Designer. Building Designer shall verify all design information on this sheet for conformance with conditions and requirements of the specific building and governing codes and ordinances. Building Designer accepts responsibility for the correctness or accuracy of the design information as it may relate to a specific building. Certification is valid only when truss is fabricated by a UFPI plant. Bracing shown is for lateral support of truss members only and does not replace erection and permanent bracing. Refer to Building Component Safety Information (BCSI) for general guidance regarding storage, erection and bracing available from SBCA and Truss Plate Institute.



Job 72284865	Truss D1	Truss Type Truss	Qty 4	Ply 1	PROF BLD SUPPLY 1000 PLAN # 4 RF Job Reference (optional)
-----------------	-------------	---------------------	----------	----------	--

UFP Mid Atlantic LLC, 5631 S. NC 62, Burlington, NC, Micah Clayton

Run: 8.51 S Oct 22 2021 Print: 8.510 S Oct 22 2021 MiTek Industries, Inc. Wed Jul 13 17:08:47

Page: 1

ID:DyiEBTgkS1?Ljlx7GqffqyibU4-kEHPJsBpv5BOTYE9khCtuPCXRCPWrol?gDUxbEyyQqU

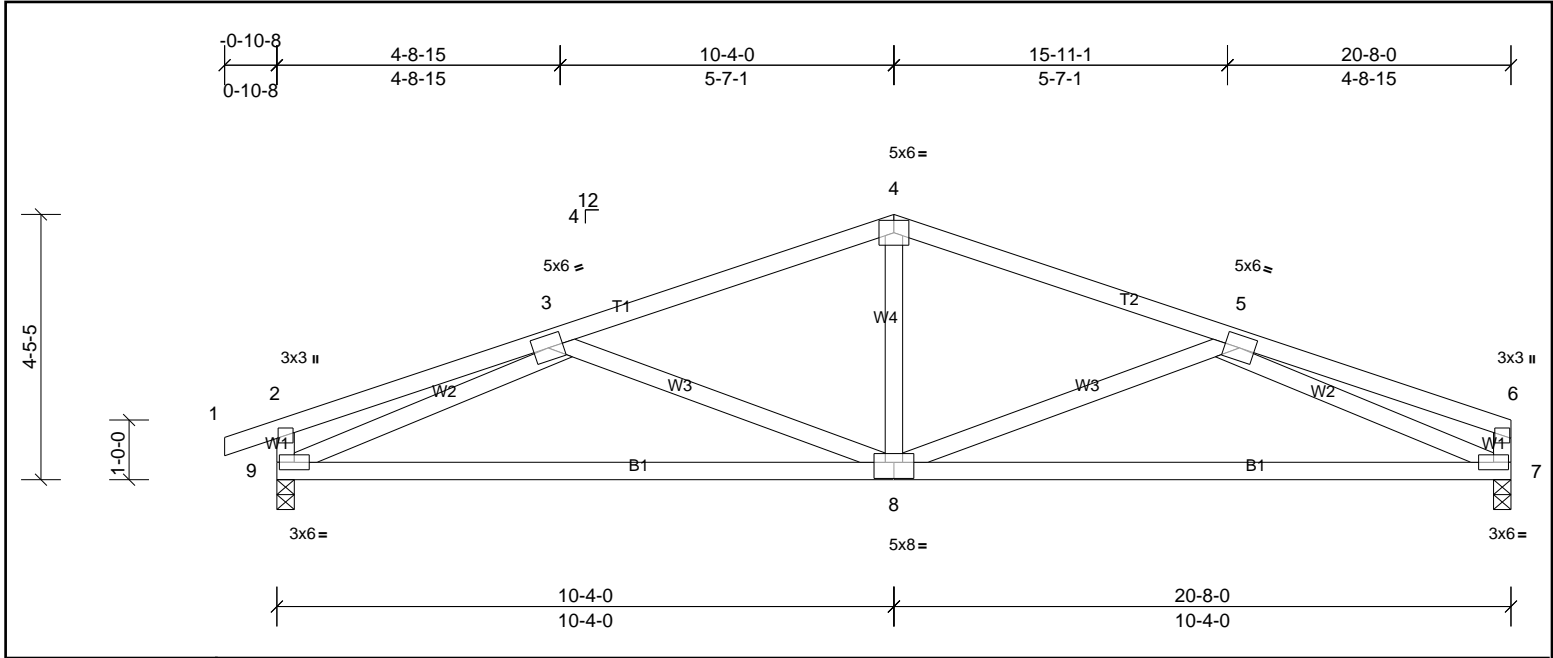


Plate Offsets (X, Y): [3:0-0-0,0-0-0], [8:0-4-0,0-3-4]

Loading	(psf)	Spacing	2-0-0	CSI	DEFL	in	(loc)	l/defl	L/d	PLATES	GRIP	
TCLL (roof)	20.0	Plate Grip DOL	1.15	TC	0.55	Vert(LL)	-0.19	8-9	>999	240	MT20	244/190
TCDL	10.0	Lumber DOL	1.15	BC	0.78	Vert(CT)	-0.39	8-9	>621	180		
BCLL	0.0*	Rep Stress Incr	YES	WB	0.63	Horz(CT)	0.04	7	n/a	n/a		
BCDL	10.0	Code	IRC2015/TPI2014	Matrix-MSH							Weight: 104 lb	FT = 20%

LUMBER		BRACING	
TOP CHORD	2x4 SP No.2	TOP CHORD	Structural wood sheathing directly applied or 4-8-13 oc purlins, except end verticals.
BOT CHORD	2x4 SP No.1	BOT CHORD	Rigid ceiling directly applied or 10-0-0 oc bracing.
WEBS	2x4 SP No.3		

REACTIONS	(lb/size)	7=813/0-3-8, (min. 0-1-8), 9=878/0-3-8, (min. 0-1-8)
Max Horiz	9=46 (LC 14)	
Max Uplift	7=130 (LC 7), 9=173 (LC 6)	

FORCES	(lb) - Max. Comp./Max. Ten. - All forces 250 (lb) or less except when shown.
TOP CHORD	2-3=-299/49, 3-4=-1183/314, 4-5=-1184/315, 5-6=-283/34, 2-9=-266/140
BOT CHORD	8-9=-347/1267, 7-8=-354/1279
WEBS	4-8=-20/463, 5-8=-288/224, 3-8=-276/221, 3-9=-1168/410, 5-7=-1203/430

- NOTES**
- Unbalanced roof live loads have been considered for this design.
 - Wind: ASCE 7-10; Vult=130mph (3-second gust) Vasd=103mph; TCDL=6.0psf; BCDL=6.0psf; h=35ft; Cat. II; Exp B; Enclosed; MWFRS (envelope) exterior zone and C-C Exterior (2) zone; cantilever left and right exposed; end vertical left and right exposed; C-C for members and forces & MWFRS for reactions shown; Lumber DOL=1.60 plate grip DOL=1.60
 - This truss has been designed for a 10.0 psf bottom chord live load nonconcurrent with any other live loads.
 - * This truss has been designed for a live load of 20.0psf on the bottom chord in all areas where a rectangle 3-06-00 tall by 2-00-00 wide will fit between the bottom chord and any other members.
 - Provide mechanical connection (by others) of truss to bearing plate capable of withstanding 173 lb uplift at joint 9 and 130 lb uplift at joint 7.
 - This truss is designed in accordance with the 2015 International Residential Code sections R502.11.1 and R802.10.2 and referenced standard ANSI/TPI 1.



This design is based upon parameters shown, and is for an individual building component to be installed and loaded vertically. Applicability of design parameters and proper incorporation of component is responsibility of the Building Designer. Building Designer shall verify all design information on this sheet for conformance with conditions and requirements of the specific building and governing codes and ordinances. Building Designer accepts responsibility for the correctness or accuracy of the design information as it may relate to a specific building. Certification is valid only when truss is fabricated by a UFPI plant. Bracing shown is for lateral support of truss members only and does not replace erection and permanent bracing. Refer to Building Component Safety Information (BCSI) for general guidance regarding storage, erection and bracing available from SBCA and Truss Plate Institute.



Job 72284865	Truss D1G	Truss Type Truss	Qty 1	Ply 1	PROF BLD SUPPLY 1000 PLAN # 4 RF Job Reference (optional)
-----------------	--------------	---------------------	----------	----------	--

UFP Mid Atlantic LLC, 5631 S. NC 62, Burlington, NC, Micah Clayton

Run: 8.51 S Oct 22 2021 Print: 8.510 S Oct 22 2021 MiTek Industries, Inc. Wed Jul 13 17:08:47

Page: 1

ID:h8GcOpgNDK7CKR6shzLuC1yibU3-kEHPJsbPv5BOTYE9khCtuPceocB4rxW?gDUxbEyyQqU

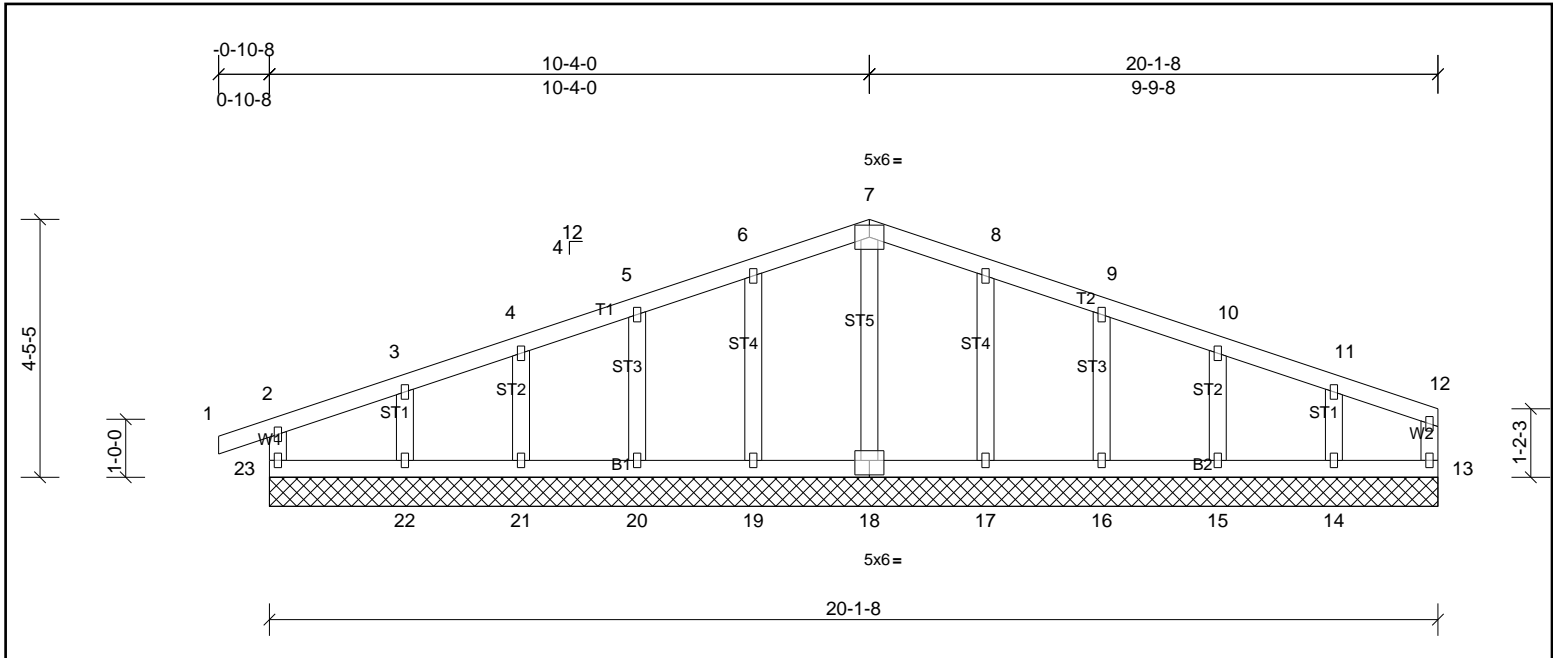


Plate Offsets (X, Y): [18:0-3-0,0-3-0]

Loading	(psf)	Spacing	2-0-0	CSI	DEFL	in	(loc)	l/defl	L/d	PLATES	GRIP	
TCLL (roof)	20.0	Plate Grip DOL	1.15	TC	0.08	Vert(LL)	n/a	-	n/a	999	MT20	244/190
TCDL	10.0	Lumber DOL	1.15	BC	0.04	Vert(CT)	n/a	-	n/a	999		
BCLL	0.0*	Rep Stress Incr	YES	WB	0.04	Horz(CT)	0.00	13	n/a	n/a		
BCDL	10.0	Code	IRC2015/TPI2014	Matrix-MR							Weight: 97 lb	FT = 20%

LUMBER		BRACING	
TOP CHORD	2x4 SP No.2	TOP CHORD	Structural wood sheathing directly applied or 6-0-0 oc purlins, except end verticals.
BOT CHORD	2x4 SP No.2	BOT CHORD	Rigid ceiling directly applied or 10-0-0 oc bracing.
WEBS	2x4 SP No.3		
OTHERS	2x4 SP No.3		

REACTIONS All bearings 20-1-8.
 (lb) - Max Horiz 23=46 (LC 10)
 Max Uplift All uplift 100 (lb) or less at joint(s) 13, 14, 15, 16, 17, 19, 20, 21, 22, 23
 Max Grav All reactions 250 (lb) or less at joint(s) 13, 14, 15, 16, 17, 18, 19, 20, 21, 22, 23

FORCES (lb) - Max. Comp./Max. Ten. - All forces 250 (lb) or less except when shown.

- NOTES**
- Unbalanced roof live loads have been considered for this design.
 - Wind: ASCE 7-10; Vult=130mph (3-second gust) Vasd=103mph; TCCL=6.0psf; BCDL=6.0psf; h=35ft; Cat. II; Exp B; Enclosed; MWFRS (envelope) exterior zone and C-C Exterior (2) zone; cantilever left and right exposed; end vertical left and right exposed; C-C for members and forces & MWFRS for reactions shown; Lumber DOL=1.60 plate grip DOL=1.60
 - Truss designed for wind loads in the plane of the truss only.
 - All plates are 1.5x3 MT20 unless otherwise indicated.
 - Gable requires continuous bottom chord bearing.
 - Truss to be fully sheathed from one face or securely braced against lateral movement (i.e. diagonal web).
 - Gable studs spaced at 2-0-0 oc.
 - This truss has been designed for a 10.0 psf bottom chord live load nonconcurrent with any other live loads.
 - * This truss has been designed for a live load of 20.0psf on the bottom chord in all areas where a rectangle 3-06-00 tall by 2-00-00 wide will fit between the bottom chord and any other members.
 - Provide mechanical connection (by others) of truss to bearing plate capable of withstanding 100 lb uplift at joint(s) 23, 13, 19, 20, 21, 22, 17, 16, 15, 14.
 - This truss is designed in accordance with the 2015 International Residential Code sections R502.11.1 and R802.10.2 and referenced standard ANSI/TPI 1.



This design is based upon parameters shown, and is for an individual building component to be installed and loaded vertically. Applicability of design parameters and proper incorporation of component is responsibility of the Building Designer. Building Designer shall verify all design information on this sheet for conformance with conditions and requirements of the specific building and governing codes and ordinances. Building Designer accepts responsibility for the correctness or accuracy of the design information as it may relate to a specific building. Certification is valid only when truss is fabricated by a UFPI plant. Bracing shown is for lateral support of truss members only and does not replace erection and permanent bracing. Refer to Building Component Safety Information (BCSI) for general guidance regarding storage, erection and bracing available from SBCA and Truss Plate Institute.



Job 72284865	Truss E1	Truss Type Truss	Qty 9	Ply 1	PROF BLD SUPPLY 1000 PLAN # 4 RF Job Reference (optional)
-----------------	-------------	---------------------	----------	----------	--

UFP Mid Atlantic LLC, 5631 S. NC 62, Burlington, NC, Micah Clayton

Run: 8.51 S Oct 22 2021 Print: 8.510 S Oct 22 2021 MiTek Industries, Inc. Wed Jul 13 17:08:48

Page: 1

ID:h8GcOpgNDK7CKR6shzLuC1yibU3-CQrnWCBRgOJF4ipMHPj6RchlkcAaJC8vtEU8hyyQqT

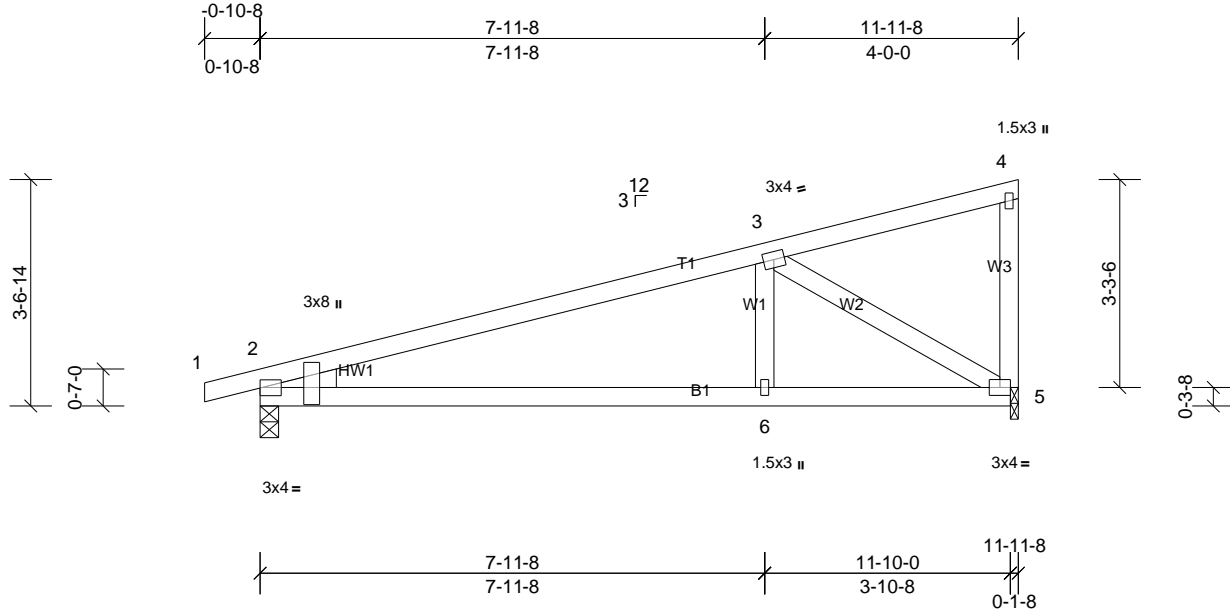


Plate Offsets (X, Y): [2:Edge,0-1-7], [2:0-3-2,0-8-4]

Loading	(psf)	Spacing		CSI		DEFL	in	(loc)	l/defl	L/d	PLATES	GRIP
TCLL (roof)	20.0	Plate Grip DOL	2-0-0	TC	0.58	Vert(LL)	0.20	6-9	>712	240	MT20	244/190
TCDL	10.0	Lumber DOL	1.15	BC	0.56	Vert(CT)	-0.18	6-9	>787	180		
BCLL	0.0*	Rep Stress Incr	YES	WB	0.33	Horz(CT)	0.02	2	n/a	n/a		
BCDL	10.0	Code	IRC2015/TPI2014	Matrix-MSH							Weight: 53 lb	FT = 20%

LUMBER

TOP CHORD 2x4 SP No.2
 BOT CHORD 2x4 SP No.2
 WEBS 2x4 SP No.3
 WEDGE Left: 2x4 SP No.2

BRACING

TOP CHORD Structural wood sheathing directly applied or 5-6-2 oc purlins, except end verticals.
 BOT CHORD Rigid ceiling directly applied or 6-2-0 oc bracing.

REACTIONS

(lb/size) 2=527/0-3-8, (min. 0-1-8), 5=471/0-1-8, (min. 0-1-8)
 Max Horiz 2=131 (LC 6)
 Max Uplift 2=230 (LC 6), 5=227 (LC 6)

FORCES

(lb) - Max. Comp./Max. Ten. - All forces 250 (lb) or less except when shown.
 TOP CHORD 2-3=-762/667
 BOT CHORD 2-6=-737/709, 5-6=-737/709
 WEBS 3-6=-312/285, 3-5=-827/861

NOTES

- 1) Wind: ASCE 7-10; Vult=130mph (3-second gust) Vasd=103mph; TCDL=6.0psf; BCDL=6.0psf; h=35ft; Cat. II; Exp B; Enclosed; MWFRS (envelope) exterior zone and C-C Exterior (2) zone; cantilever left and right exposed; end vertical left exposed; porch left and right exposed; C-C for members and forces & MWFRS for reactions shown; Lumber DOL=1.60 plate grip DOL=1.60
- 2) This truss has been designed for a 10.0 psf bottom chord live load nonconcurrent with any other live loads.
- 3) * This truss has been designed for a live load of 20.0psf on the bottom chord in all areas where a rectangle 3-06-00 tall by 2-00-00 wide will fit between the bottom chord and any other members.
- 4) Bearing at joint(s) 5 considers parallel to grain value using ANSI/TPI 1 angle to grain formula. Building designer should verify capacity of bearing surface.
- 5) Provide mechanical connection (by others) of truss to bearing plate at joint(s) 5.
- 6) Provide mechanical connection (by others) of truss to bearing plate capable of withstanding 230 lb uplift at joint 2 and 227 lb uplift at joint 5.
- 7) This truss is designed in accordance with the 2015 International Residential Code sections R502.11.1 and R802.10.2 and referenced standard ANSI/TPI 1.



This design is based upon parameters shown, and is for an individual building component to be installed and loaded vertically. Applicability of design parameters and proper incorporation of component is responsibility of the Building Designer. Building Designer shall verify all design information on this sheet for conformance with conditions and requirements of the specific building and governing codes and ordinances. Building Designer accepts responsibility for the correctness or accuracy of the design information as it may relate to a specific building. Certification is valid only when truss is fabricated by a UFPI plant. Bracing shown is for lateral support of truss members only and does not replace erection and permanent bracing. Refer to Building Component Safety Information (BCSI) for general guidance regarding storage, erection and bracing available from SBCA and Truss Plate Institute.



Job 72284865	Truss E1G	Truss Type Truss	Qty 1	Ply 1	PROF BLD SUPPLY 1000 PLAN # 4 RF Job Reference (optional)
-----------------	--------------	---------------------	----------	----------	--

UFP Mid Atlantic LLC, 5631 S. NC 62, Burlington, NC, Micah Clayton

Run: 8.51 S Oct 22 2021 Print: 8.510 S Oct 22 2021 MiTek Industries, Inc. Wed Jul 13 17:08:48

Page: 1

ID:h8GcOpgNDK7CKR6shzLuC1yibU3-CQrnWCBRgOJF4ipMHPj6Rch5cmraMA8vtEU8hyyQqT

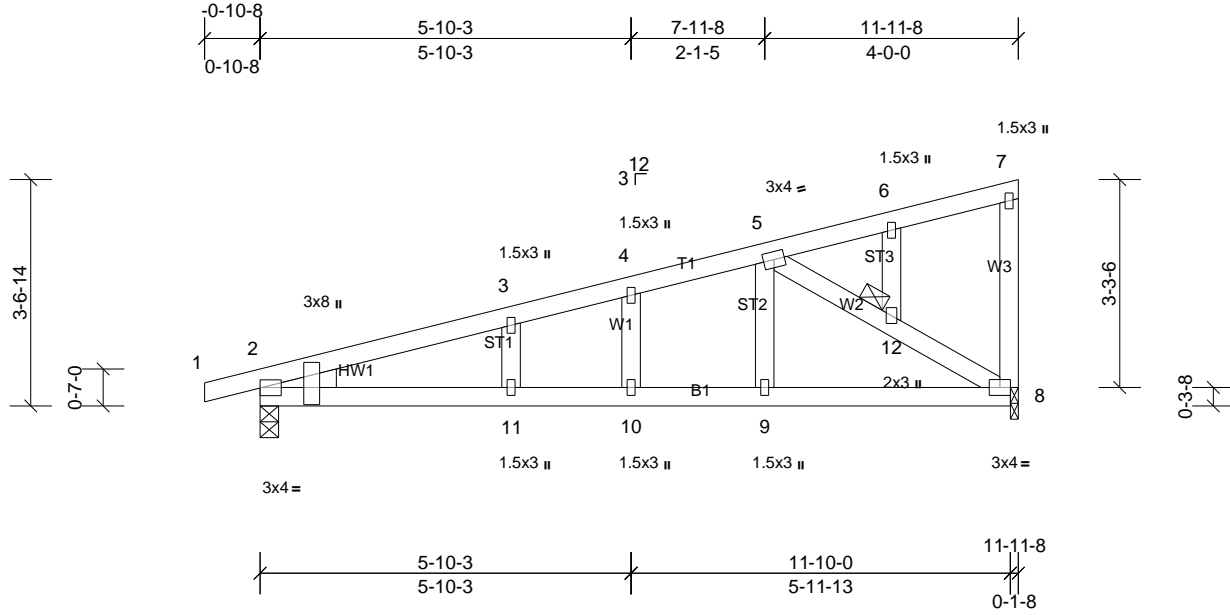


Plate Offsets (X, Y): [2:Edge,0-1-7], [2:0-3-2,0-8-4]

Loading	(psf)	Spacing	2-0-0	CSI	DEFLL	in	(loc)	l/defl	L/d	PLATES	GRIP	
TCLL (roof)	20.0	Plate Grip DOL	1.15	TC	0.62	Vert(LL)	0.12	11	>999	240	MT20	244/190
TCDL	18.0	Lumber DOL	1.15	BC	0.71	Vert(CT)	-0.25	11	>569	180		
BCLL	0.0*	Rep Stress Incr	YES	WB	0.14	Horz(CT)	0.03	2	n/a	n/a		
BCDL	10.0	Code	IRC2015/TPI2014	Matrix-MSH							Weight: 59 lb	FT = 20%

LUMBER		BRACING	
TOP CHORD	2x4 SP No.2	TOP CHORD	Structural wood sheathing directly applied or 5-1-8 oc purlins, except end verticals.
BOT CHORD	2x4 SP No.2	BOT CHORD	Rigid ceiling directly applied or 10-0-0 oc bracing.
WEBS	2x4 SP No.3	JOINTS	1 Brace at Jt(s): 12
OTHERS	2x4 SP No.3		
WEDGE	Left: 2x4 SP No.2		
REACTIONS	(lb/size)	2=636/0-3-8, (min. 0-1-8), 8=565/0-1-8, (min. 0-1-8)	
	Max Horiz	2=131 (LC 6)	
	Max Uplift	2=117 (LC 6), 8=114 (LC 10)	
FORCES	(lb) - Max. Comp./Max. Ten. - All forces 250 (lb) or less except when shown.		
TOP CHORD		2-3=-910/161, 3-4=-879/183, 4-5=-855/198	
BOT CHORD		2-11=-265/850, 10-11=-265/850, 9-10=-265/850, 8-9=-265/850	
WEBS		5-12=-993/308, 8-12=-991/312, 5-9=-13/290	

- NOTES**
- 1) Wind: ASCE 7-10; Vult=130mph (3-second gust) Vasd=103mph; TCDL=6.0psf; BCDL=6.0psf; h=35ft; Cat. II; Exp B; Enclosed; MWFRS (envelope) exterior zone and C-C Exterior (2) zone; cantilever left and right exposed; end vertical left exposed; C-C for members and forces & MWFRS for reactions shown; Lumber DOL=1.60 plate grip DOL=1.60
 - 2) Truss designed for wind loads in the plane of the truss only.
 - 3) Gable studs spaced at 2-0-0 oc.
 - 4) This truss has been designed for a 10.0 psf bottom chord live load nonconcurrent with any other live loads.
 - 5) * This truss has been designed for a live load of 20.0psf on the bottom chord in all areas where a rectangle 3-06-00 tall by 2-00-00 wide will fit between the bottom chord and any other members.
 - 6) Bearing at joint(s) 8 considers parallel to grain value using ANSI/TPI 1 angle to grain formula. Building designer should verify capacity of bearing surface.
 - 7) Provide mechanical connection (by others) of truss to bearing plate at joint(s) 8.
 - 8) Provide mechanical connection (by others) of truss to bearing plate capable of withstanding 117 lb uplift at joint 2 and 114 lb uplift at joint 8.
 - 9) This truss is designed in accordance with the 2015 International Residential Code sections R502.11.1 and R802.10.2 and referenced standard ANSI/TPI 1.



This design is based upon parameters shown, and is for an individual building component to be installed and loaded vertically. Applicability of design parameters and proper incorporation of component is responsibility of the Building Designer. Building Designer shall verify all design information on this sheet for conformance with conditions and requirements of the specific building and governing codes and ordinances. Building Designer accepts responsibility for the correctness or accuracy of the design information as it may relate to a specific building. Certification is valid only when truss is fabricated by a UFPI plant. Bracing shown is for lateral support of truss members only and does not replace erection and permanent bracing. Refer to Building Component Safety Information (BCSI) for general guidance regarding storage, erection and bracing available from SBCA and Truss Plate Institute.



Job 72284865	Truss E2	Truss Type Truss	Qty 1	Ply 1	PROF BLD SUPPLY 1000 PLAN # 4 RF Job Reference (optional)
-----------------	-------------	---------------------	----------	----------	--

UFP Mid Atlantic LLC, 5631 S. NC 62, Burlington, NC, Micah Clayton

Run: 8.51 S Oct 22 2021 Print: 8.510 S Oct 22 2021 MiTek Industries, Inc. Wed Jul 13 17:08:48

Page: 1

ID:nB0na8n4V?bkYmyfONBLszID_U-CQrnWCBRgQJF4ipMHPj6RclnWcufaOM8vtEU8hyyQqT

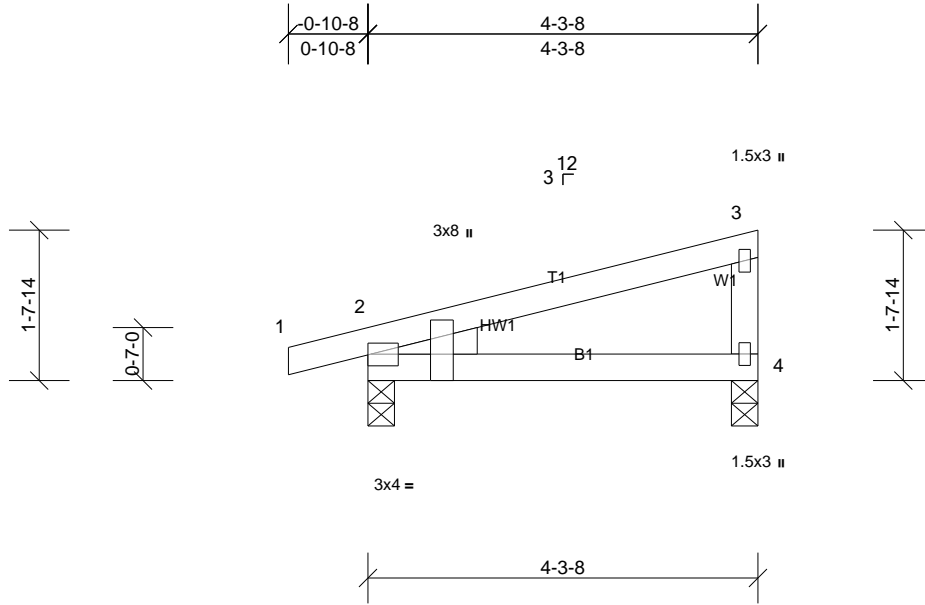


Plate Offsets (X, Y): [2:Edge,0-1-7], [2:0-3-6,Edge]

Loading	(psf)	Spacing	2-0-0	CSI	DEFL	in	(loc)	l/defl	L/d	PLATES	GRIP	
TCLL (roof)	20.0	Plate Grip DOL	1.15	TC	0.21	Vert(LL)	0.03	4-7	>999	240	MT20	244/190
TCDL	10.0	Lumber DOL	1.15	BC	0.21	Vert(CT)	-0.03	4-7	>999	180		
BCLL	0.0*	Rep Stress Incr	YES	WB	0.00	Horz(CT)	-0.01	2	n/a	n/a		
BCDL	10.0	Code	IRC2015/TPI2014	Matrix-MP							Weight: 18 lb	FT = 20%

LUMBER

TOP CHORD 2x4 SP No.2
 BOT CHORD 2x4 SP No.2
 WEBS 2x4 SP No.3
 WEDGE Left: 2x4 SP No.2

BRACING

TOP CHORD Structural wood sheathing directly applied or 4-3-8 oc purlins, except end verticals.
 BOT CHORD Rigid ceiling directly applied or 10-0-0 oc bracing.

REACTIONS

(lb/size) 2=224/0-3-8, (min. 0-1-8), 4=160/0-3-8, (min. 0-1-8)
 Max Horiz 2=54 (LC 6)
 Max Uplift 2=106 (LC 6), 4=79 (LC 6)

FORCES

(lb) - Max. Comp./Max. Ten. - All forces 250 (lb) or less except when shown.

NOTES

- Wind: ASCE 7-10; Vult=130mph (3-second gust) Vasd=103mph; TC DL=6.0psf; BC DL=6.0psf; h=35ft; Cat. II; Exp B; Enclosed; MWFRS (envelope) exterior zone and C-C Exterior (2) zone; cantilever left and right exposed; end vertical left exposed; porch left and right exposed; C-C for members and forces & MWFRS for reactions shown; Lumber DOL=1.60 plate grip DOL=1.60
- This truss has been designed for a 10.0 psf bottom chord live load nonconcurrent with any other live loads.
- * This truss has been designed for a live load of 20.0psf on the bottom chord in all areas where a rectangle 3-06-00 tall by 2-00-00 wide will fit between the bottom chord and any other members.
- Provide mechanical connection (by others) of truss to bearing plate capable of withstanding 79 lb uplift at joint 4 and 106 lb uplift at joint 2.
- This truss is designed in accordance with the 2015 International Residential Code sections R502.11.1 and R802.10.2 and referenced standard ANSI/TPI 1.



This design is based upon parameters shown, and is for an individual building component to be installed and loaded vertically. Applicability of design parameters and proper incorporation of component is responsibility of the Building Designer. Building Designer shall verify all design information on this sheet for conformance with conditions and requirements of the specific building and governing codes and ordinances. Building Designer accepts responsibility for the correctness or accuracy of the design information as it may relate to a specific building. Certification is valid only when truss is fabricated by a UFPI plant. Bracing shown is for lateral support of truss members only and does not replace erection and permanent bracing. Refer to Building Component Safety Information (BCSI) for general guidance regarding storage, erection and bracing available from SBCA and Truss Plate Institute.



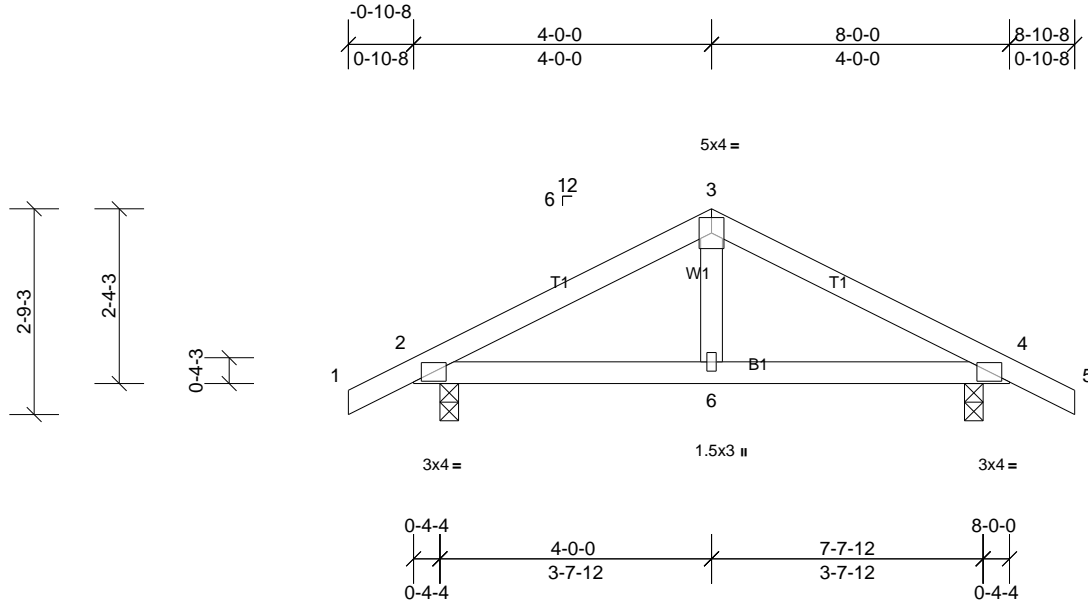
Job 72284865	Truss G1	Truss Type Truss	Qty 1	Ply 1	PROF BLD SUPPLY 1000 PLAN # 4 RF Job Reference (optional)
-----------------	-------------	---------------------	----------	----------	--

UFP Mid Atlantic LLC, 5631 S. NC 62, Burlington, NC, Micah Clayton

Run: 8.51 S Oct 22 2021 Print: 8.510 S Oct 22 2021 MiTek Industries, Inc. Wed Jul 13 17:08:48

Page: 1

ID:Zc6EnraKveTg4J_7hEp3Oz?7ZF-CQmWCBrgQJF4ipMHPj6RclnfcvkaOa8vtEU8hyyQqT



Loading	(psf)	Spacing	2-0-0	CSI	DEFL	in	(loc)	l/defl	L/d	PLATES	GRIP
TCLL (roof)	20.0	Plate Grip DOL	1.15	TC	0.20	Vert(LL)	0.01	6-10	>999	MT20	244/190
TCDL	10.0	Lumber DOL	1.15	BC	0.14	Vert(CT)	-0.01	6	>999		
BCLL	0.0*	Rep Stress Incr	YES	WB	0.05	Horz(CT)	0.00	4	n/a		
BCDL	10.0	Code	IRC2015/TPI2014	Matrix-MSH						Weight: 31 lb	FT = 20%

LUMBER	BRACING
TOP CHORD 2x4 SP No.2	TOP CHORD Structural wood sheathing directly applied or 6-0-0 oc purlins.
BOT CHORD 2x4 SP No.2	BOT CHORD Rigid ceiling directly applied or 10-0-0 oc bracing.
WEBS 2x4 SP No.3	

REACTIONS	(lb/size)	2=373/0-3-0, (min. 0-1-8), 4=373/0-3-0, (min. 0-1-8)
Max Horiz	2=43 (LC 10)	
Max Uplift	2=70 (LC 7), 4=70 (LC 6)	

FORCES	(lb) - Max. Comp./Max. Ten. - All forces 250 (lb) or less except when shown.
TOP CHORD	2-3=-313/311, 3-4=-313/311

- NOTES**
- Unbalanced roof live loads have been considered for this design.
 - Wind: ASCE 7-10; Vult=130mph (3-second gust) Vasd=103mph; TCCL=6.0psf; BCDL=6.0psf; h=35ft; Cat. II; Exp B; Enclosed; MWFRS (envelope) exterior zone and C-C Exterior (2) zone; cantilever left and right exposed; end vertical left and right exposed; porch left and right exposed; C-C for members and forces & MWFRS for reactions shown; Lumber DOL=1.60 plate grip DOL=1.60
 - This truss has been designed for a 10.0 psf bottom chord live load nonconcurrent with any other live loads.
 - * This truss has been designed for a live load of 20.0psf on the bottom chord in all areas where a rectangle 3-06-00 tall by 2-00-00 wide will fit between the bottom chord and any other members.
 - Provide mechanical connection (by others) of truss to bearing plate capable of withstanding 70 lb uplift at joint 2 and 70 lb uplift at joint 4.
 - This truss is designed in accordance with the 2015 International Residential Code sections R502.11.1 and R802.10.2 and referenced standard ANSI/TPI 1.



This design is based upon parameters shown, and is for an individual building component to be installed and loaded vertically. Applicability of design parameters and proper incorporation of component is responsibility of the Building Designer. Building Designer shall verify all design information on this sheet for conformance with conditions and requirements of the specific building and governing codes and ordinances. Building Designer accepts responsibility for the correctness or accuracy of the design information as it may relate to a specific building. Certification is valid only when truss is fabricated by a UFPI plant. Bracing shown is for lateral support of truss members only and does not replace erection and permanent bracing. Refer to Building Component Safety Information (BCSI) for general guidance regarding storage, erection and bracing available from SBCA and Truss Plate Institute.



Job 72284865	Truss G1G	Truss Type Truss	Qty 1	Ply 1	PROF BLD SUPPLY 1000 PLAN # 4 RF Job Reference (optional)
-----------------	--------------	---------------------	----------	----------	--

UFP Mid Atlantic LLC, 5631 S. NC 62, Burlington, NC, Micah Clayton

Run: 8.51 S Oct 22 2021 Print: 8.510 S Oct 22 2021 MiTek Industries, Inc. Wed Jul 13 17:08:48

Page: 1

ID: P8s4KhBmVpHMeY1ZKHfckWz?7Yo-CQmWCBRgOJF4ipMHPj6RclozcvRaOv8vtEU8hyyQqT

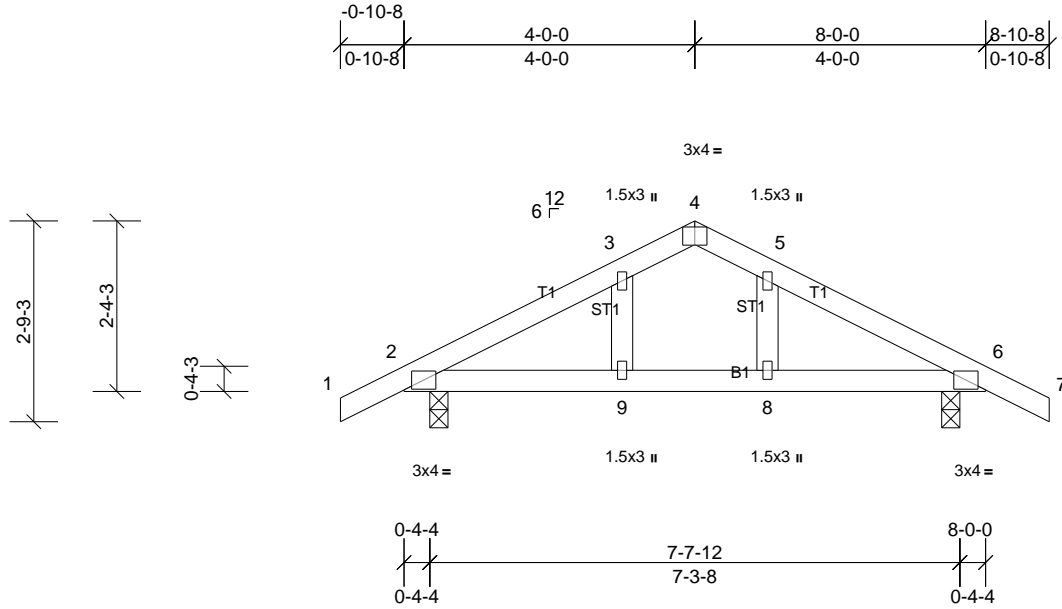


Plate Offsets (X, Y): [4:0-2-0,Edge], [5:0-0-0,Edge]

Loading	(psf)	Spacing	2-0-0	CSI	DEFL	in	(loc)	l/defl	L/d	PLATES	GRIP	
TCLL (roof)	20.0	Plate Grip DOL	1.15	TC	0.18	Vert(LL)	-0.01	8-9	>999	240	MT20	244/190
TCDL	10.0	Lumber DOL	1.15	BC	0.16	Vert(CT)	-0.01	8-9	>999	180		
BCLL	0.0*	Rep Stress Incr	YES	WB	0.03	Horz(CT)	0.00	6	n/a	n/a		
BCDL	10.0	Code	IRC2015/TPI2014	Matrix-MSH							Weight: 32 lb	FT = 20%

LUMBER
 TOP CHORD 2x4 SP No.2
 BOT CHORD 2x4 SP No.2
 OTHERS 2x4 SP No.3

BRACING
 TOP CHORD Structural wood sheathing directly applied or 6-0-0 oc purlins.
 BOT CHORD Rigid ceiling directly applied or 10-0-0 oc bracing.

REACTIONS (lb/size) 2=373/0-3-0, (min. 0-1-8), 6=373/0-3-0, (min. 0-1-8)
 Max Horiz 2=43 (LC 12)
 Max Uplift 2=67 (LC 12), 6=67 (LC 11)

FORCES (lb) - Max. Comp./Max. Ten. - All forces 250 (lb) or less except when shown.
 TOP CHORD 2-3=-313/97, 5-6=-313/97

- NOTES**
- 1) Unbalanced roof live loads have been considered for this design.
 - 2) Wind: ASCE 7-10; Vult=130mph (3-second gust) Vasd=103mph; TCDL=6.0psf; BCDL=6.0psf; h=35ft; Cat. II; Exp B; Enclosed; MWFRS (envelope) exterior zone and C-C Exterior (2) zone; cantilever left and right exposed; end vertical left and right exposed; C-C for members and forces & MWFRS for reactions shown; Lumber DOL=1.60 plate grip DOL=1.60
 - 3) Truss designed for wind loads in the plane of the truss only.
 - 4) Gable studs spaced at 2-0-0 oc.
 - 5) This truss has been designed for a 10.0 psf bottom chord live load nonconcurrent with any other live loads.
 - 6) * This truss has been designed for a live load of 20.0psf on the bottom chord in all areas where a rectangle 3-06-00 tall by 2-00-00 wide will fit between the bottom chord and any other members.
 - 7) Provide mechanical connection (by others) of truss to bearing plate capable of withstanding 67 lb uplift at joint 2 and 67 lb uplift at joint 6.
 - 8) This truss is designed in accordance with the 2015 International Residential Code sections R502.11.1 and R802.10.2 and referenced standard ANSI/TPI 1.



This design is based upon parameters shown, and is for an individual building component to be installed and loaded vertically. Applicability of design parameters and proper incorporation of component is responsibility of the Building Designer. Building Designer shall verify all design information on this sheet for conformance with conditions and requirements of the specific building and governing codes and ordinances. Building Designer accepts responsibility for the correctness or accuracy of the design information as it may relate to a specific building. Certification is valid only when truss is fabricated by a UFPI plant. Bracing shown is for lateral support of truss members only and does not replace erection and permanent bracing. Refer to Building Component Safety Information (BCSI) for general guidance regarding storage, erection and bracing available from SBCA and Truss Plate Institute.



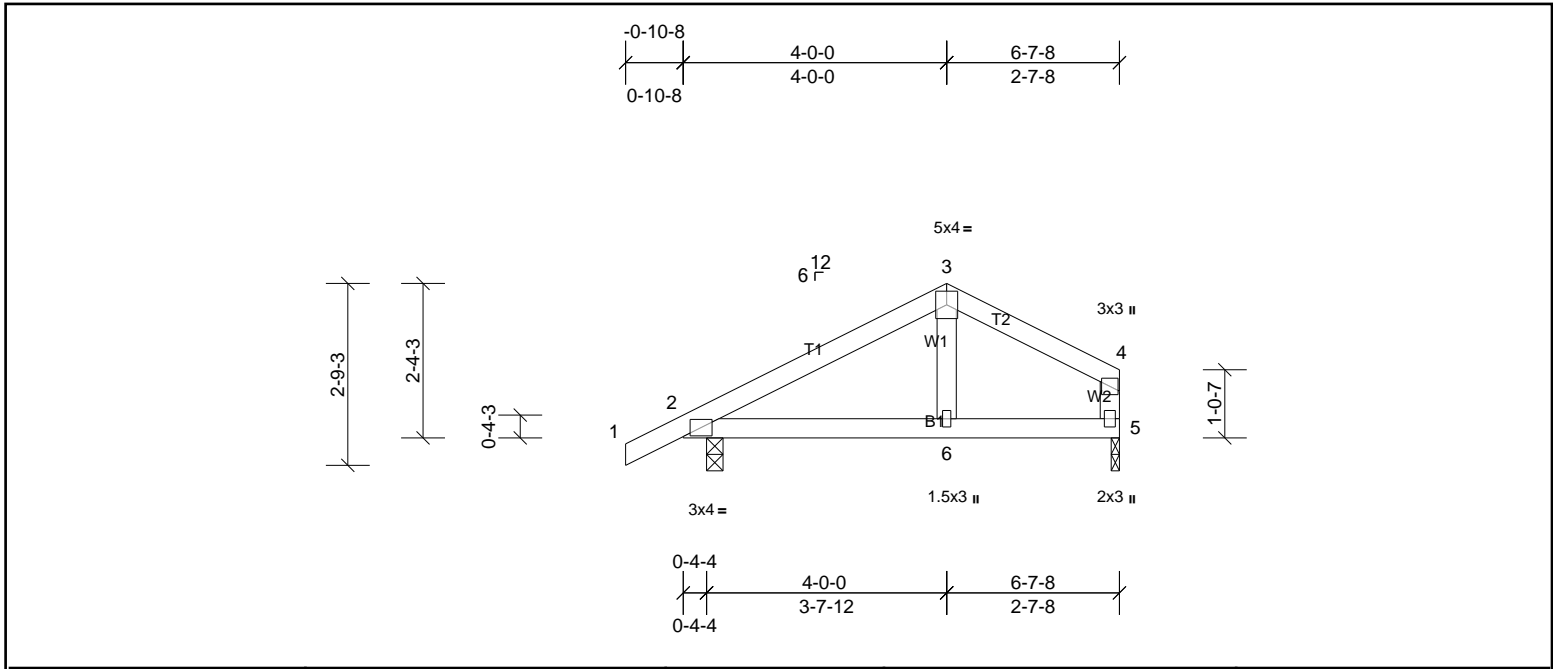
Job 72284865	Truss G2	Truss Type Truss	Qty 3	Ply 1	PROF BLD SUPPLY 1000 PLAN # 4 RF Job Reference (optional)
-----------------	-------------	---------------------	----------	----------	--

UFP Mid Atlantic LLC, 5631 S. NC 62, Burlington, NC, Micah Clayton

Run: 8.51 S Oct 22 2021 Print: 8.510 S Oct 22 2021 MiTek Industries, Inc. Wed Jul 13 17:08:48

Page: 1

ID:E5pdHBtX3KTG_luWAln_YXz?7Xv-CQrnWCBRgOJF4ipMHPj6Rcln7cv3aOp8vtEU8hyyQqT



Loading	(psf)	Spacing	2-0-0	CSI	DEFL	in	(loc)	l/defl	L/d	PLATES	GRIP	
TCLL (roof)	20.0	Plate Grip DOL	1.15	TC	0.23	Vert(LL)	0.02	6-10	>999	240	MT20	244/190
TCDL	10.0	Lumber DOL	1.15	BC	0.18	Vert(CT)	-0.02	6-10	>999	180		
BCLL	0.0*	Rep Stress Incr	YES	WB	0.04	Horz(CT)	0.00	5	n/a	n/a		
BCDL	10.0	Code	IRC2015/TPI2014	Matrix-MSH							Weight: 26 lb	FT = 20%

LUMBER		BRACING	
TOP CHORD	2x4 SP No.2	TOP CHORD	Structural wood sheathing directly applied or 6-0-0 oc purlins, except end verticals.
BOT CHORD	2x4 SP No.2	BOT CHORD	Rigid ceiling directly applied or 10-0-0 oc bracing.
WEBS	2x4 SP No.3		

REACTIONS	(lb/size)	2=340/0-3-0, (min. 0-1-8), 5=230/0-1-8, (min. 0-1-8)
Max Horiz	2=56 (LC 9)	
Max Uplift	2=65 (LC 10), 5=40 (LC 6)	

FORCES (lb) - Max. Comp./Max. Ten. - All forces 250 (lb) or less except when shown.

- NOTES**
- Unbalanced roof live loads have been considered for this design.
 - Wind: ASCE 7-10; Vult=130mph (3-second gust) Vasd=103mph; TCDL=6.0psf; BCDL=6.0psf; h=35ft; Cat. II; Exp B; Enclosed; MWFRS (envelope) exterior zone and C-C Exterior (2) zone; cantilever left and right exposed; end vertical left and right exposed; porch left and right exposed; C-C for members and forces & MWFRS for reactions shown; Lumber DOL=1.60 plate grip DOL=1.60
 - This truss has been designed for a 10.0 psf bottom chord live load nonconcurrent with any other live loads.
 - * This truss has been designed for a live load of 20.0psf on the bottom chord in all areas where a rectangle 3-06-00 tall by 2-00-00 wide will fit between the bottom chord and any other members.
 - Provide mechanical connection (by others) of truss to bearing plate at joint(s) 5.
 - Provide mechanical connection (by others) of truss to bearing plate capable of withstanding 65 lb uplift at joint 2 and 40 lb uplift at joint 5.
 - This truss is designed in accordance with the 2015 International Residential Code sections R502.11.1 and R802.10.2 and referenced standard ANSI/TPI 1.



This design is based upon parameters shown, and is for an individual building component to be installed and loaded vertically. Applicability of design parameters and proper incorporation of component is responsibility of the Building Designer. Building Designer shall verify all design information on this sheet for conformance with conditions and requirements of the specific building and governing codes and ordinances. Building Designer accepts responsibility for the correctness or accuracy of the design information as it may relate to a specific building. Certification is valid only when truss is fabricated by a UFPI plant. Bracing shown is for lateral support of truss members only and does not replace erection and permanent bracing. Refer to Building Component Safety Information (BCSI) for general guidance regarding storage, erection and bracing available from SBCA and Truss Plate Institute.



Job 72284865	Truss V1	Truss Type Truss	Qty 2	Ply 1	PROF BLD SUPPLY 1000 PLAN # 4 RF Job Reference (optional)
-----------------	-------------	---------------------	----------	----------	--

UFP Mid Atlantic LLC, 5631 S. NC 62, Burlington, NC, Micah Clayton

Run: 8.51 S Oct 22 2021 Print: 8.510 S Oct 22 2021 MiTek Industries, Inc. Wed Jul 13 17:08:49

Page: 1

ID:rmScTvJck4olbBm8RTu6Bwz?7Um-gcPAjYc4QiR6isOYr6ELzql?o0HMJrcH8Xz2g7yyQqS

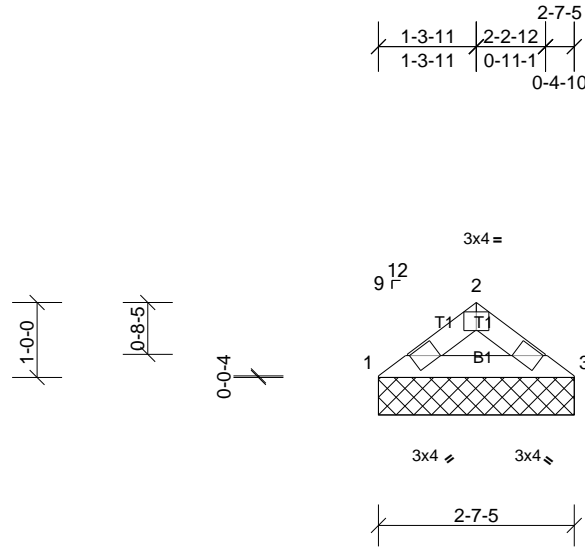


Plate Offsets (X, Y): [2:0-2-0,Edge]

Loading	(psf)	Spacing	2-0-0	CSI		DEFL	in	(loc)	l/defl	L/d	PLATES	GRIP
TCLL (roof)	20.0	Plate Grip DOL	1.15	TC	0.05	Vert(LL)	n/a	-	n/a	999	MT20	244/190
TCDL	10.0	Lumber DOL	1.15	BC	0.05	Vert(TL)	n/a	-	n/a	999		
BCLL	0.0*	Rep Stress Incr	YES	WB	0.00	Horiz(TL)	0.00	3	n/a	n/a		
BCDL	10.0	Code	IRC2015/TPI2014	Matrix-MP							Weight: 7 lb	FT = 20%

LUMBER

TOP CHORD 2x4 SP No.2
BOT CHORD 2x4 SP No.2

BRACING

TOP CHORD Structural wood sheathing directly applied or 2-7-5 oc purlins.
BOT CHORD Rigid ceiling directly applied or 10-0-0 oc bracing.

REACTIONS

(lb/size) 1=104/2-7-5, (min. 0-1-8), 3=104/2-7-5, (min. 0-1-8)
Max Horiz 1=21 (LC 7)
Max Uplift 1=13 (LC 10), 3=13 (LC 11)

FORCES

(lb) - Max. Comp./Max. Ten. - All forces 250 (lb) or less except when shown.

NOTES

- Unbalanced roof live loads have been considered for this design.
- Wind: ASCE 7-10; Vult=130mph (3-second gust) Vasd=103mph; TCDL=6.0psf; BCDL=6.0psf; h=35ft; Cat. II; Exp B; Enclosed; MWFRS (envelope) exterior zone and C-C Exterior (2) zone; cantilever left and right exposed; end vertical left and right exposed; C-C for members and forces & MWFRS for reactions shown; Lumber DOL=1.60 plate grip DOL=1.60
- Gable requires continuous bottom chord bearing.
- This truss has been designed for a 10.0 psf bottom chord live load nonconcurrent with any other live loads.
- * This truss has been designed for a live load of 20.0psf on the bottom chord in all areas where a rectangle 3-06-00 tall by 2-00-00 wide will fit between the bottom chord and any other members.
- Provide mechanical connection (by others) of truss to bearing plate capable of withstanding 13 lb uplift at joint 1 and 13 lb uplift at joint 3.
- This truss is designed in accordance with the 2015 International Residential Code sections R502.11.1 and R802.10.2 and referenced standard ANSI/TPI 1.



This design is based upon parameters shown, and is for an individual building component to be installed and loaded vertically. Applicability of design parameters and proper incorporation of component is responsibility of the Building Designer. Building Designer shall verify all design information on this sheet for conformance with conditions and requirements of the specific building and governing codes and ordinances. Building Designer accepts responsibility for the correctness or accuracy of the design information as it may relate to a specific building. Certification is valid only when truss is fabricated by a UFPI plant. Bracing shown is for lateral support of truss members only and does not replace erection and permanent bracing. Refer to Building Component Safety Information (BCSI) for general guidance regarding storage, erection and bracing available from SBCA and Truss Plate Institute.



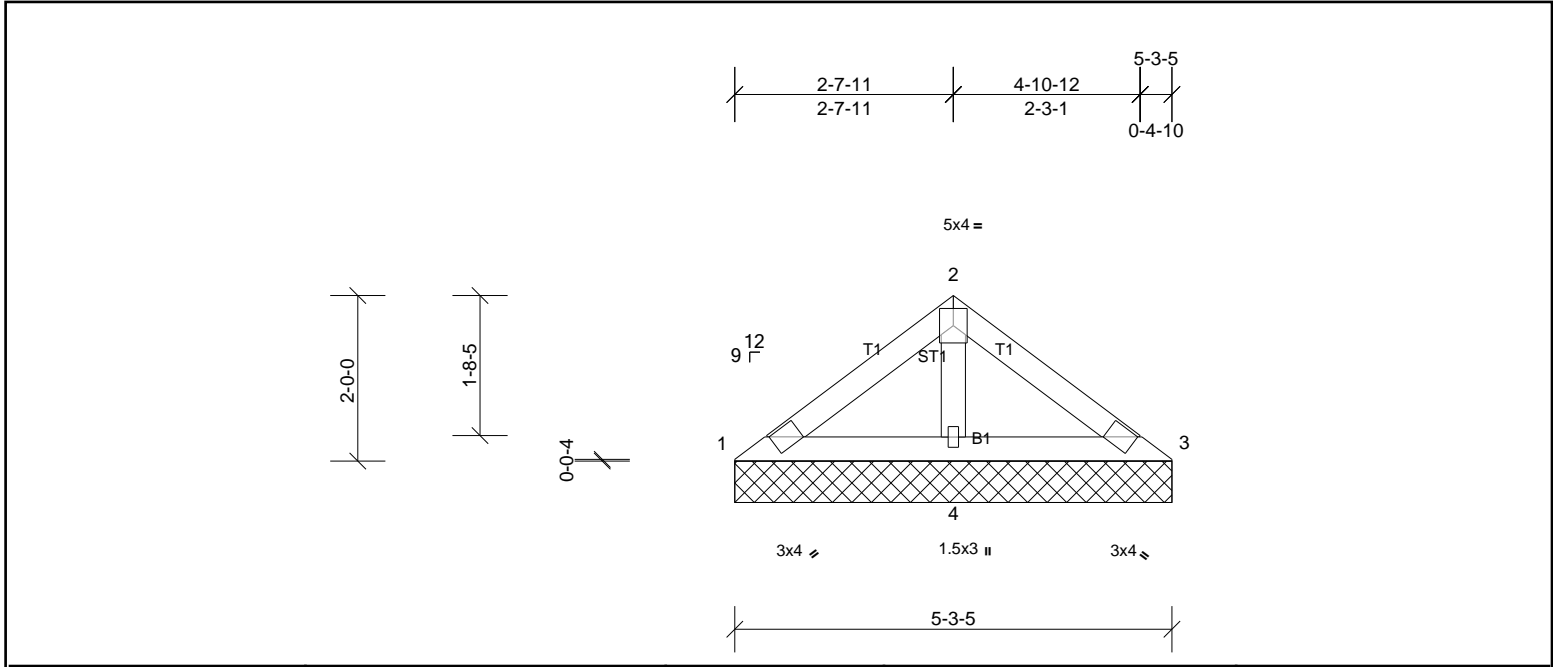
Job 72284865	Truss V2	Truss Type Truss	Qty 2	Ply 1	PROF BLD SUPPLY 1000 PLAN # 4 RF Job Reference (optional)
-----------------	-------------	---------------------	----------	----------	--

UFP Mid Atlantic LLC, 5631 S. NC 62, Burlington, NC, Micah Clayton

Run: 8.51 S Oct 22 2021 Print: 8.510 S Oct 22 2021 MiTek Industries, Inc. Wed Jul 13 17:08:49

Page: 1

ID:rmScTvJck4olbBm8RTu6Bwz?7Um-gcPAjYC4QiR6isOYr6ELzq!Z0GyJrzH8Xz2g7yyQqS



Loading	(psf)	Spacing	2-0-0	CSI	DEFL	in	(loc)	l/defl	L/d	PLATES	GRIP	
TCLL (roof)	20.0	Plate Grip DOL	1.15	TC	0.06	Vert(LL)	n/a	-	n/a	999	MT20	244/190
TCDL	10.0	Lumber DOL	1.15	BC	0.08	Vert(TL)	n/a	-	n/a	999		
BCLL	0.0*	Rep Stress Incr	YES	WB	0.04	Horiz(TL)	0.00	3	n/a	n/a		
BCDL	10.0	Code	IRC2015/TPI2014	Matrix-MSH							Weight: 18 lb	FT = 20%

LUMBER	BRACING
TOP CHORD 2x4 SP No.2	TOP CHORD Structural wood sheathing directly applied or 5-3-5 oc purlins.
BOT CHORD 2x4 SP No.2	BOT CHORD Rigid ceiling directly applied or 6-0-0 oc bracing.
OTHERS 2x4 SP No.3	

REACTIONS	(lb/size)	1=55/5-3-5, (min. 0-1-8), 3=55/5-3-5, (min. 0-1-8), 4=312/5-3-5, (min. 0-1-8)
Max Horiz	1=47 (LC 9)	
Max Uplift	1=5 (LC 10), 3=-13 (LC 11), 4=-43 (LC 10)	
Max Grav	1=67 (LC 21), 3=67 (LC 22), 4=312 (LC 1)	

FORCES (lb) - Max. Comp./Max. Ten. - All forces 250 (lb) or less except when shown.

- NOTES**
- Unbalanced roof live loads have been considered for this design.
 - Wind: ASCE 7-10; Vult=130mph (3-second gust) Vasd=103mph; TCCL=6.0psf; BCDL=6.0psf; h=35ft; Cat. II; Exp B; Enclosed; MWFRS (envelope) exterior zone and C-C Exterior (2) zone; cantilever left and right exposed; end vertical left and right exposed; C-C for members and forces & MWFRS for reactions shown; Lumber DOL=1.60 plate grip DOL=1.60
 - Gable requires continuous bottom chord bearing.
 - This truss has been designed for a 10.0 psf bottom chord live load nonconcurrent with any other live loads.
 - * This truss has been designed for a live load of 20.0psf on the bottom chord in all areas where a rectangle 3-06-00 tall by 2-00-00 wide will fit between the bottom chord and any other members.
 - Provide mechanical connection (by others) of truss to bearing plate capable of withstanding 5 lb uplift at joint 1, 13 lb uplift at joint 3 and 43 lb uplift at joint 4.
 - This truss is designed in accordance with the 2015 International Residential Code sections R502.11.1 and R802.10.2 and referenced standard ANSI/TPI 1.



This design is based upon parameters shown, and is for an individual building component to be installed and loaded vertically. Applicability of design parameters and proper incorporation of component is responsibility of the Building Designer. Building Designer shall verify all design information on this sheet for conformance with conditions and requirements of the specific building and governing codes and ordinances. Building Designer accepts responsibility for the correctness or accuracy of the design information as it may relate to a specific building. Certification is valid only when truss is fabricated by a UFPI plant. Bracing shown is for lateral support of truss members only and does not replace erection and permanent bracing. Refer to Building Component Safety Information (BCSI) for general guidance regarding storage, erection and bracing available from SBCA and Truss Plate Institute.



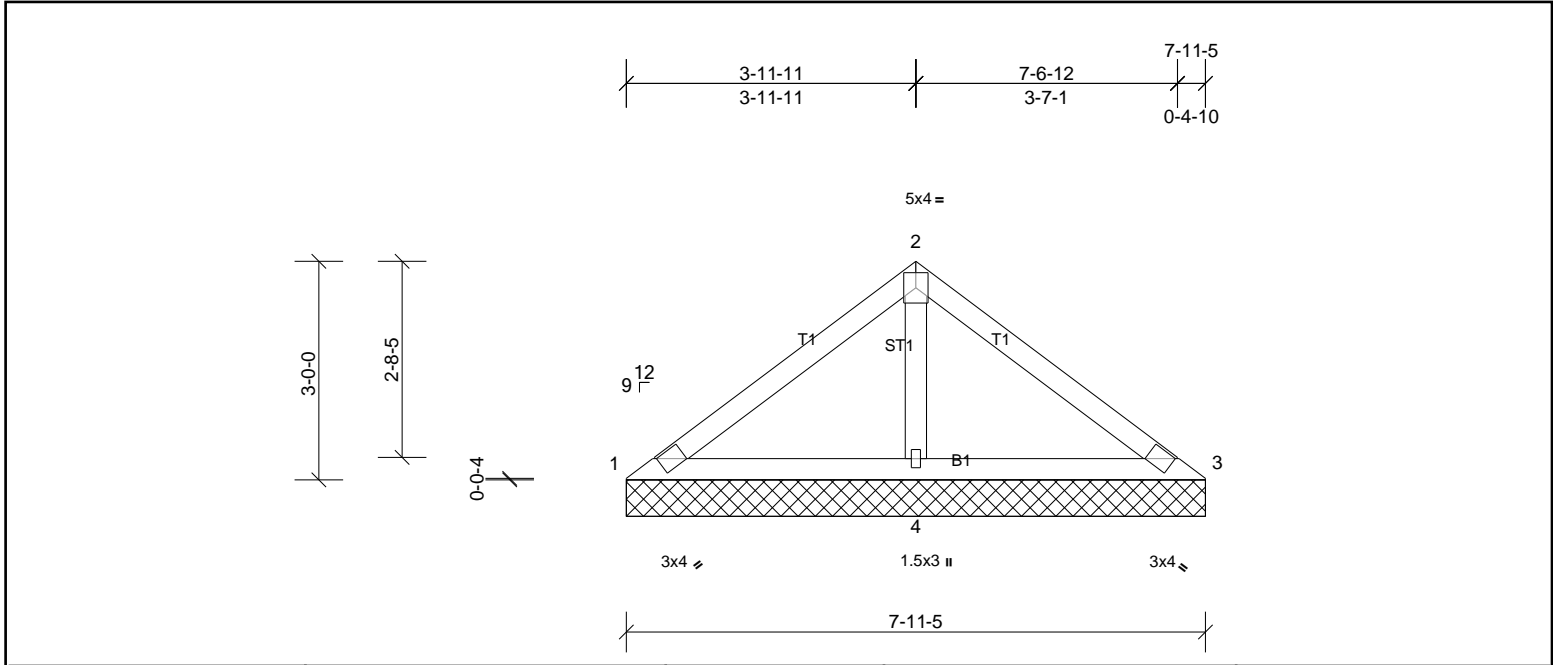
Job 72284865	Truss V3	Truss Type Truss	Qty 2	Ply 1	PROF BLD SUPPLY 1000 PLAN # 4 RF Job Reference (optional)
-----------------	-------------	---------------------	----------	----------	--

UFP Mid Atlantic LLC, 5631 S. NC 62, Burlington, NC, Micah Clayton

Run: 8.51 S Oct 22 2021 Print: 8.510 S Oct 22 2021 MiTek Industries, Inc. Wed Jul 13 17:08:49

Page: 1

ID:Kz0_hFKEVOWcDLKK?APLk7z?7UI-gcPajYc4QiR6isOYr6ELzqlzv0FVJqBH8Xz2g7yyQqS



Loading	(psf)	Spacing	2-0-0	CSI	DEFL	in	(loc)	l/defl	L/d	PLATES	GRIP	
TCLL (roof)	20.0	Plate Grip DOL	1.15	TC	0.17	Vert(LL)	n/a	-	n/a	999	MT20	244/190
TCDL	10.0	Lumber DOL	1.15	BC	0.17	Vert(TL)	n/a	-	n/a	999		
BCLL	0.0*	Rep Stress Incr	YES	WB	0.09	Horiz(TL)	0.00	3	n/a	n/a		
BCDL	10.0	Code	IRC2015/TPI2014	Matrix-MSH							Weight: 29 lb	FT = 20%

LUMBER		BRACING	
TOP CHORD	2x4 SP No.2	TOP CHORD	Structural wood sheathing directly applied or 7-11-5 oc purlins.
BOT CHORD	2x4 SP No.2	BOT CHORD	Rigid ceiling directly applied or 6-0-0 oc bracing.
OTHERS	2x4 SP No.3		

REACTIONS	(lb/size)	1=48/7-11-5, (min. 0-1-8), 3=48/7-11-5, (min. 0-1-8), 4=539/7-11-5, (min. 0-1-8)
Max Horiz	1=73 (LC 6)	
Max Uplift	1=4 (LC 22), 3=11 (LC 6), 4=87 (LC 10)	
Max Grav	1=75 (LC 21), 3=75 (LC 22), 4=539 (LC 1)	

FORCES	(lb) - Max. Comp./Max. Ten. - All forces 250 (lb) or less except when shown.
WEBS	2-4=-396/155

- NOTES**
- 1) Unbalanced roof live loads have been considered for this design.
 - 2) Wind: ASCE 7-10; Vult=130mph (3-second gust) Vasd=103mph; TCCL=6.0psf; BCCL=6.0psf; h=35ft; Cat. II; Exp B; Enclosed; MWFRS (envelope) exterior zone and C-C Exterior (2) zone; cantilever left and right exposed; end vertical left and right exposed; C-C for members and forces & MWFRS for reactions shown; Lumber DOL=1.60 plate grip DOL=1.60
 - 3) Gable requires continuous bottom chord bearing.
 - 4) This truss has been designed for a 10.0 psf bottom chord live load nonconcurrent with any other live loads.
 - 5) * This truss has been designed for a live load of 20.0psf on the bottom chord in all areas where a rectangle 3-06-00 tall by 2-00-00 wide will fit between the bottom chord and any other members.
 - 6) Provide mechanical connection (by others) of truss to bearing plate capable of withstanding 4 lb uplift at joint 1, 11 lb uplift at joint 3 and 87 lb uplift at joint 4.
 - 7) This truss is designed in accordance with the 2015 International Residential Code sections R502.11.1 and R802.10.2 and referenced standard ANSI/TPI 1.



This design is based upon parameters shown, and is for an individual building component to be installed and loaded vertically. Applicability of design parameters and proper incorporation of component is responsibility of the Building Designer. Building Designer shall verify all design information on this sheet for conformance with conditions and requirements of the specific building and governing codes and ordinances. Building Designer accepts responsibility for the correctness or accuracy of the design information as it may relate to a specific building. Certification is valid only when truss is fabricated by a UFPI plant. Bracing shown is for lateral support of truss members only and does not replace erection and permanent bracing. Refer to Building Component Safety Information (BCSI) for general guidance regarding storage, erection and bracing available from SBCA and Truss Plate Institute.



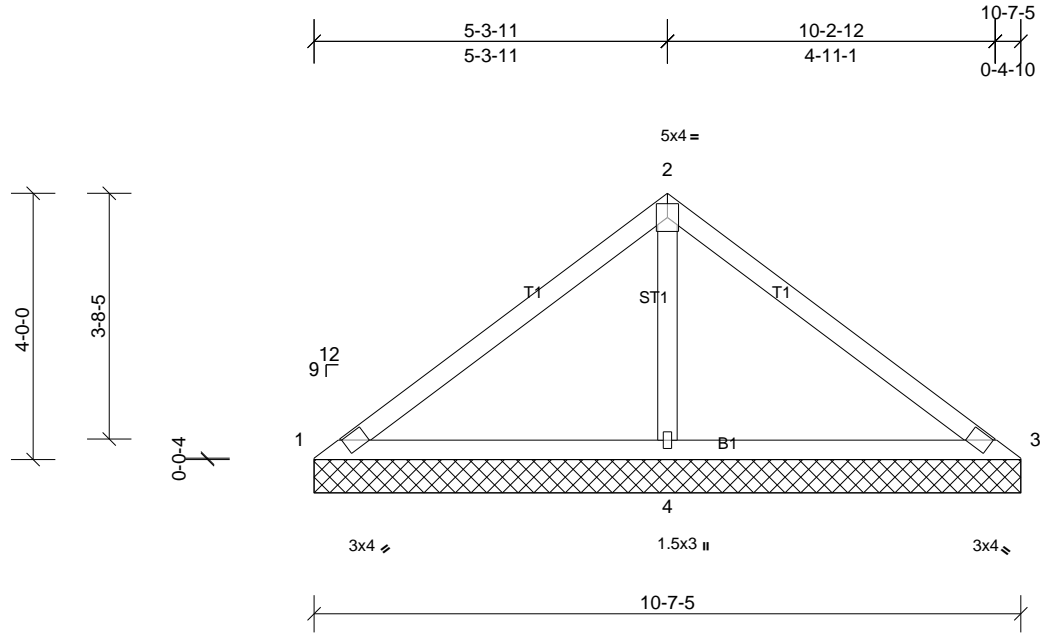
Job 72284865	Truss V4	Truss Type Truss	Qty 2	Ply 1	PROF BLD SUPPLY 1000 PLAN # 4 RF Job Reference (optional)
-----------------	-------------	---------------------	----------	----------	--

UFP Mid Atlantic LLC, 5631 S. NC 62, Burlington, NC, Micah Clayton

Run: 8.51 S Oct 22 2021 Print: 8.510 S Oct 22 2021 MiTek Industries, Inc. Wed Jul 13 17:08:49

Page: 1

ID:Kz0_hFKEVowcDLKK?APLk7z?7UI-gcPAjYC4QiR6isOYr6ELzqlwJ0DVJobH8Xz2g7yyQqS



Loading	(psf)	Spacing	2-0-0	CSI	DEFL	in	(loc)	l/defl	L/d	PLATES	GRIP	
TCLL (roof)	20.0	Plate Grip DOL	1.15	TC	0.33	Vert(LL)	n/a	-	n/a	999	MT20	244/190
TCDL	10.0	Lumber DOL	1.15	BC	0.30	Vert(TL)	n/a	-	n/a	999		
BCLL	0.0*	Rep Stress Incr	YES	WB	0.19	Horiz(TL)	0.00	3	n/a	n/a		
BCDL	10.0	Code	IRC2015/TPI2014	Matrix-MSH							Weight: 39 lb	FT = 20%

LUMBER		BRACING	
TOP CHORD	2x4 SP No.2	TOP CHORD	Structural wood sheathing directly applied or 10-0-0 oc purlins.
BOT CHORD	2x4 SP No.2	BOT CHORD	Rigid ceiling directly applied or 6-0-0 oc bracing.
OTHERS	2x4 SP No.3		

REACTIONS	(lb/size)	1=17/10-7-5, (min. 0-1-8), 3=17/10-7-5, (min. 0-1-8), 4=814/10-7-5, (min. 0-1-8)
Max Horiz	1=99 (LC 8)	
Max Uplift	1=41 (LC 22), 3=41 (LC 21), 4=148 (LC 10)	
Max Grav	1=66 (LC 21), 3=66 (LC 22), 4=814 (LC 1)	

FORCES	(lb) - Max. Comp./Max. Ten. - All forces 250 (lb) or less except when shown.
TOP CHORD	1-2=-119/373, 2-3=-119/373
BOT CHORD	1-4=-307/170, 3-4=-307/170
WEBS	2-4=-632/251

- NOTES**
- Unbalanced roof live loads have been considered for this design.
 - Wind: ASCE 7-10; Vult=130mph (3-second gust) Vasd=103mph; TCCL=6.0psf; BCDL=6.0psf; h=35ft; Cat. II; Exp B; Enclosed; MWFRS (envelope) exterior zone and C-C Exterior (2) zone; cantilever left and right exposed; end vertical left and right exposed; C-C for members and forces & MWFRS for reactions shown; Lumber DOL=1.60 plate grip DOL=1.60
 - Gable requires continuous bottom chord bearing.
 - This truss has been designed for a 10.0 psf bottom chord live load nonconcurrent with any other live loads.
 - * This truss has been designed for a live load of 20.0psf on the bottom chord in all areas where a rectangle 3-06-00 tall by 2-00-00 wide will fit between the bottom chord and any other members.
 - Provide mechanical connection (by others) of truss to bearing plate capable of withstanding 41 lb uplift at joint 1, 41 lb uplift at joint 3 and 148 lb uplift at joint 4.
 - This truss is designed in accordance with the 2015 International Residential Code sections R502.11.1 and R802.10.2 and referenced standard ANSI/TPI 1.



This design is based upon parameters shown, and is for an individual building component to be installed and loaded vertically. Applicability of design parameters and proper incorporation of component is responsibility of the Building Designer. Building Designer shall verify all design information on this sheet for conformance with conditions and requirements of the specific building and governing codes and ordinances. Building Designer accepts responsibility for the correctness or accuracy of the design information as it may relate to a specific building. Certification is valid only when truss is fabricated by a UFPI plant. Bracing shown is for lateral support of truss members only and does not replace erection and permanent bracing. Refer to Building Component Safety Information (BCSI) for general guidance regarding storage, erection and bracing available from SBCA and Truss Plate Institute.



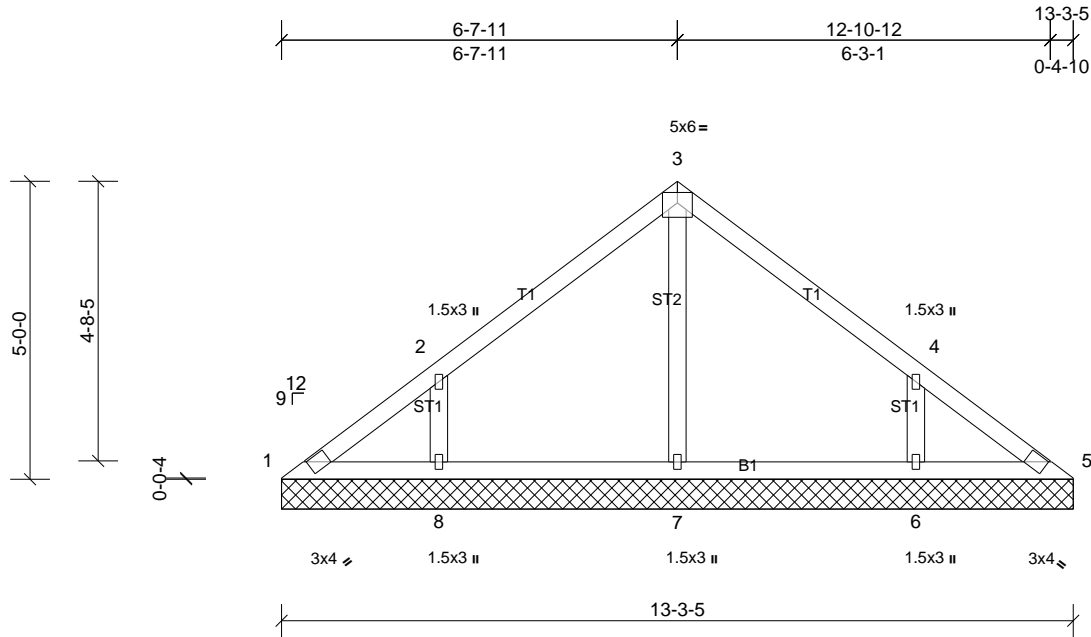
Job 72284865	Truss V5	Truss Type Truss	Qty 1	Ply 1	PROF BLD SUPPLY 1000 PLAN # 4 RF Job Reference (optional)
-----------------	-------------	---------------------	----------	----------	--

UFP Mid Atlantic LLC, 5631 S. NC 62, Burlington, NC, Micah Clayton

Run: 8.51 S Oct 22 2021 Print: 8.510 S Oct 22 2021 MiTek Industries, Inc. Wed Jul 13 17:08:49

Page: 1

ID:0GSCNoDX97KfACIfclm?kz??WB-gcPAjYc4QiR6isOYr6ELzqlyQ0GLJqIH8Xz2g7yyQqS



Loading	(psf)	Spacing	2-0-0	CSI	DEFL	in	(loc)	l/defl	L/d	PLATES	GRIP	
TCLL (roof)	20.0	Plate Grip DOL	1.15	TC	0.20	Vert(LL)	n/a	-	n/a	999	MT20	244/190
TCDL	10.0	Lumber DOL	1.15	BC	0.12	Vert(TL)	n/a	-	n/a	999		
BCLL	0.0*	Rep Stress Incr	YES	WB	0.08	Horiz(TL)	0.00	5	n/a	n/a		
BCDL	10.0	Code	IRC2015/TPI2014	Matrix-MSH							Weight: 54 lb	FT = 20%

LUMBER	BRACING
TOP CHORD 2x4 SP No.2	TOP CHORD Structural wood sheathing directly applied or 6-0-0 oc purlins.
BOT CHORD 2x4 SP No.2	BOT CHORD Rigid ceiling directly applied or 10-0-0 oc bracing.
OTHERS 2x4 SP No.3	

REACTIONS
All bearings 13-3-5.
(lb) - Max Horiz 1=-125 (LC 6)
Max Uplift All uplift 100 (lb) or less at joint(s) 1 except 6=-150 (LC 11), 8=-152 (LC 10)
Max Grav All reactions 250 (lb) or less at joint(s) 1, 5 except 6=341 (LC 18), 7=274 (LC 1), 8=344 (LC 17)

FORCES
(lb) - Max. Comp./Max. Ten. - All forces 250 (lb) or less except when shown.
WEBS 2-8=-272/196, 4-6=-272/195

- NOTES**
- Unbalanced roof live loads have been considered for this design.
 - Wind: ASCE 7-10; Vult=130mph (3-second gust) Vasd=103mph; TC DL=6.0psf; BCDL=6.0psf; h=35ft; Cat. II; Exp B; Enclosed; MWFRS (envelope) exterior zone and C-C Exterior (2) zone; cantilever left and right exposed; end vertical left and right exposed; C-C for members and forces & MWFRS for reactions shown; Lumber DOL=1.60 plate grip DOL=1.60
 - Gable requires continuous bottom chord bearing.
 - This truss has been designed for a 10.0 psf bottom chord live load nonconcurrent with any other live loads.
 - * This truss has been designed for a live load of 20.0psf on the bottom chord in all areas where a rectangle 3-06-00 tall by 2-00-00 wide will fit between the bottom chord and any other members.
 - Provide mechanical connection (by others) of truss to bearing plate capable of withstanding 100 lb uplift at joint(s) 1 except (jt=lb) 8=152, 6=149.
 - This truss is designed in accordance with the 2015 International Residential Code sections R502.11.1 and R802.10.2 and referenced standard ANSI/TPI 1.



This design is based upon parameters shown, and is for an individual building component to be installed and loaded vertically. Applicability of design parameters and proper incorporation of component is responsibility of the Building Designer. Building Designer shall verify all design information on this sheet for conformance with conditions and requirements of the specific building and governing codes and ordinances. Building Designer accepts responsibility for the correctness or accuracy of the design information as it may relate to a specific building. Certification is valid only when truss is fabricated by a UFPI plant. Bracing shown is for lateral support of truss members only and does not replace erection and permanent bracing. Refer to Building Component Safety Information (BCSI) for general guidance regarding storage, erection and bracing available from SBCA and Truss Plate Institute.



Job 72284865	Truss V6	Truss Type Truss	Qty 1	Ply 1	PROF BLD SUPPLY 1000 PLAN # 4 RF Job Reference (optional)
-----------------	-------------	---------------------	----------	----------	--

UFP Mid Atlantic LLC, 5631 S. NC 62, Burlington, NC, Micah Clayton

Run: 8.51 S Oct 22 2021 Print: 8.510 S Oct 22 2021 MiTek Industries, Inc. Wed Jul 13 17:08:49

Page: 1

ID:9b5A6_D0NABg31fOVrlqaczkwFW-gcPAjY4QiR6isOYr6ELZqlte06bJrcH8Xz2g7yyQqS

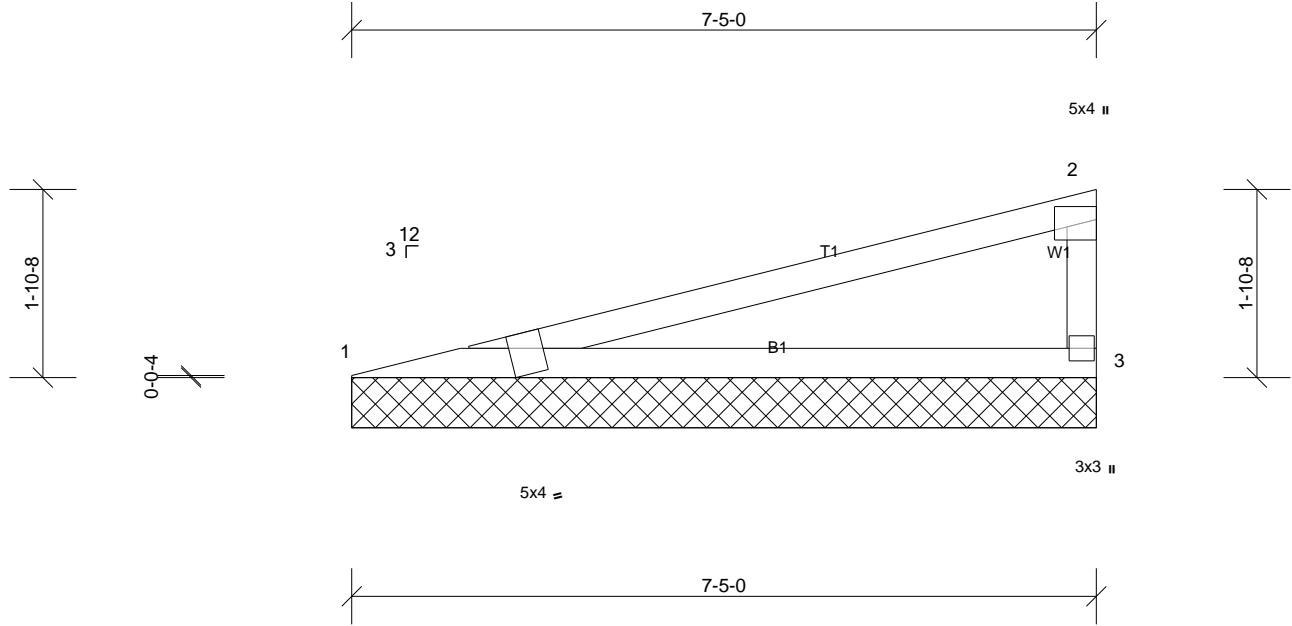


Plate Offsets (X, Y): [1:0-4-9,Edge]

Loading	(psf)	Spacing	2-0-0	CSI	DEFL	in	(loc)	l/defl	L/d	PLATES	GRIP
TCLL (roof)	20.0	Plate Grip DOL	1.15	TC	0.57	Vert(LL)	n/a	-	n/a	999	244/190
TCDL	10.0	Lumber DOL	1.15	BC	0.74	Vert(TL)	n/a	-	n/a	999	
BCLL	0.0*	Rep Stress Incr	YES	WB	0.00	Horiz(TL)	0.02	3	n/a	n/a	
BCDL	10.0	Code	IRC2015/TPI2014	Matrix-MSH						Weight: 23 lb	FT = 20%

LUMBER
TOP CHORD 2x4 SP No.2
BOT CHORD 2x4 SP No.2
WEBS 2x4 SP No.3

BRACING
TOP CHORD Structural wood sheathing directly applied or 6-0-0 oc purlins, except end verticals.
BOT CHORD Rigid ceiling directly applied or 10-0-0 oc bracing.

REACTIONS (lb/size) 1=291/7-5-0, (min. 0-1-8), 3=291/7-5-0, (min. 0-1-8)
Max Horiz 1=69 (LC 7)
Max Uplift 1=56 (LC 6), 3=64 (LC 10)

FORCES (lb) - Max. Comp./Max. Ten. - All forces 250 (lb) or less except when shown.
TOP CHORD 1-2=-874/340
BOT CHORD 1-3=-351/840

- NOTES**
- 1) Wind: ASCE 7-10; Vult=130mph (3-second gust) Vasd=103mph; TCDL=6.0psf; BCDL=6.0psf; h=35ft; Cat. II; Exp B; Enclosed; MWFRS (envelope) exterior zone and C-C Exterior (2) zone; cantilever left and right exposed; end vertical left and right exposed; C-C for members and forces & MWFRS for reactions shown; Lumber DOL=1.60 plate grip DOL=1.60
 - 2) Gable requires continuous bottom chord bearing.
 - 3) This truss has been designed for a 10.0 psf bottom chord live load nonconcurrent with any other live loads.
 - 4) * This truss has been designed for a live load of 20.0psf on the bottom chord in all areas where a rectangle 3-06-00 tall by 2-00-00 wide will fit between the bottom chord and any other members.
 - 5) Provide mechanical connection (by others) of truss to bearing plate capable of withstanding 64 lb uplift at joint 3 and 56 lb uplift at joint 1.
 - 6) This truss is designed in accordance with the 2015 International Residential Code sections R502.11.1 and R802.10.2 and referenced standard ANSI/TPI 1.



This design is based upon parameters shown, and is for an individual building component to be installed and loaded vertically. Applicability of design parameters and proper incorporation of component is responsibility of the Building Designer. Building Designer shall verify all design information on this sheet for conformance with conditions and requirements of the specific building and governing codes and ordinances. Building Designer accepts responsibility for the correctness or accuracy of the design information as it may relate to a specific building. Certification is valid only when truss is fabricated by a UFPI plant. Bracing shown is for lateral support of truss members only and does not replace erection and permanent bracing. Refer to Building Component Safety Information (BCSI) for general guidance regarding storage, erection and bracing available from SBCA and Truss Plate Institute.



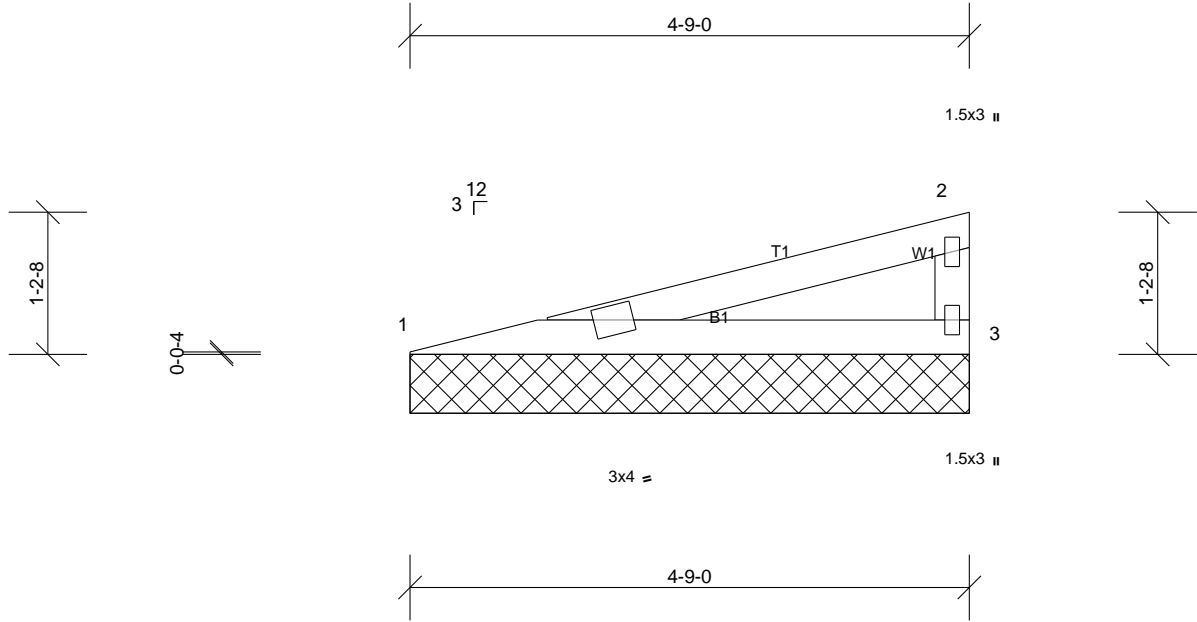
Job 72284865	Truss V7	Truss Type Truss	Qty 1	Ply 1	PROF BLD SUPPLY 1000 PLAN # 4 RF Job Reference (optional)
-----------------	-------------	---------------------	----------	----------	--

UFP Mid Atlantic LLC, 5631 S. NC 62, Burlington, NC, Micah Clayton

Run: 8.51 S Oct 22 2021 Print: 8.510 S Oct 22 2021 MiTek Industries, Inc. Wed Jul 13 17:08:49

Page: 1

ID:9b5A6_DONABg31fOVrlqaczwkFW-gcPAjYC4QiR6isOYr6ELzqlyx0DeJrcH8Xz2g7yyQqS



Loading	(psf)	Spacing	2-0-0	CSI	DEFL	in	(loc)	l/defl	L/d	PLATES	GRIP	
TCLL (roof)	20.0	Plate Grip DOL	1.15	TC	0.23	Vert(LL)	n/a	-	n/a	999	MT20	244/190
TCDL	10.0	Lumber DOL	1.15	BC	0.29	Vert(TL)	n/a	-	n/a	999		
BCLL	0.0*	Rep Stress Incr	YES	WB	0.00	Horiz(TL)	0.00	3	n/a	n/a		
BCDL	10.0	Code	IRC2015/TPI2014	Matrix-MP							Weight: 13 lb	FT = 20%

LUMBER		BRACING	
TOP CHORD	2x4 SP No.2	TOP CHORD	Structural wood sheathing directly applied or 4-9-0 oc purlins, except end verticals.
BOT CHORD	2x4 SP No.2	BOT CHORD	Rigid ceiling directly applied or 10-0-0 oc bracing.
WEBS	2x4 SP No.3		

REACTIONS	(lb/size)	1=184/4-9-0, (min. 0-1-8), 3=184/4-9-0, (min. 0-1-8)
Max Horiz	1=41 (LC 7)	
Max Uplift	1=36 (LC 6), 3=40 (LC 10)	

FORCES	(lb) - Max. Comp./Max. Ten. - All forces 250 (lb) or less except when shown.
TOP CHORD	1-2=-456/199
BOT CHORD	1-3=-206/436

- NOTES**
- Wind: ASCE 7-10; Vult=130mph (3-second gust) Vasd=103mph; TCDL=6.0psf; BCDL=6.0psf; h=35ft; Cat. II; Exp B; Enclosed; MWFRS (envelope) exterior zone and C-C Exterior (2) zone; cantilever left and right exposed; end vertical left and right exposed; C-C for members and forces & MWFRS for reactions shown; Lumber DOL=1.60 plate grip DOL=1.60
 - Gable requires continuous bottom chord bearing.
 - This truss has been designed for a 10.0 psf bottom chord live load nonconcurrent with any other live loads.
 - * This truss has been designed for a live load of 20.0psf on the bottom chord in all areas where a rectangle 3-06-00 tall by 2-00-00 wide will fit between the bottom chord and any other members.
 - Provide mechanical connection (by others) of truss to bearing plate capable of withstanding 40 lb uplift at joint 3 and 36 lb uplift at joint 1.
 - This truss is designed in accordance with the 2015 International Residential Code sections R502.11.1 and R802.10.2 and referenced standard ANSI/TPI 1.



This design is based upon parameters shown, and is for an individual building component to be installed and loaded vertically. Applicability of design parameters and proper incorporation of component is responsibility of the Building Designer. Building Designer shall verify all design information on this sheet for conformance with conditions and requirements of the specific building and governing codes and ordinances. Building Designer accepts responsibility for the correctness or accuracy of the design information as it may relate to a specific building. Certification is valid only when truss is fabricated by a UFPI plant. Bracing shown is for lateral support of truss members only and does not replace erection and permanent bracing. Refer to Building Component Safety Information (BCSI) for general guidance regarding storage, erection and bracing available from SBCA and Truss Plate Institute.

