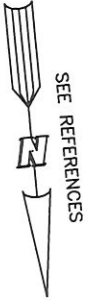
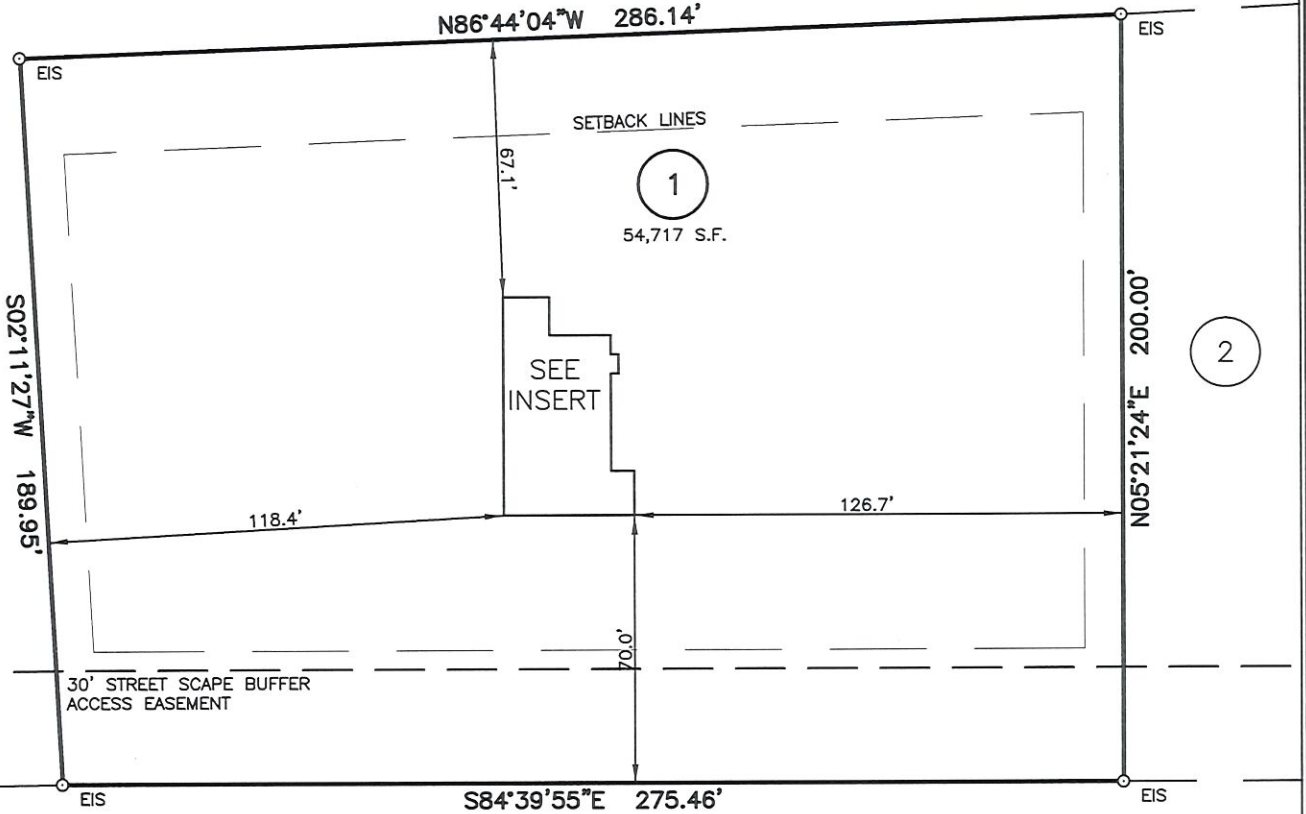


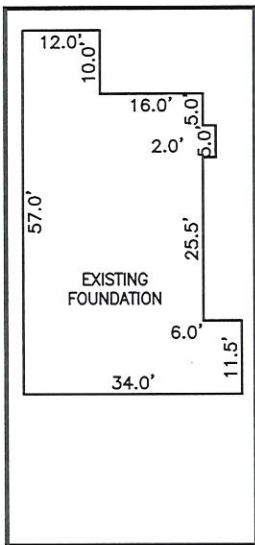
AS-BUILT IMPROVEMENTS FOR  
**NEW HOME, INC., LLC**  
 4455 OLD U.S. 421  
 LOT 1, DUNCAN'S CREEK  
 UPPER LITTLE RIVER TOWNSHIP, HARNETT COUNTY, NORTH CAROLINA



RESIDUAL AREA



OLD U.S. 421 (SR 1281)  
 80' PUBLIC R/W



INSERT: 1"=30'

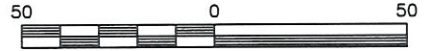
THIS AS-BUILT IS  
 FOR CODE COMPLIANCE.  
 NOT FOR SALES OR  
 CONVEYANCE

**LEGEND**

<ul style="list-style-type: none"> <li>□ AIR CONDITIONER</li> <li>BC BACK OF CURB</li> <li>BFP BACK FLOW PREVENTER</li> <li>○ CLEANOUT</li> <li>□ CURB INLET</li> <li>DHS DRILL HOLE SET</li> <li>ECM EXISTING CONCRETE MONUMENT</li> <li>EDH EXISTING DRILL HOLE</li> <li>EIS EXISTING IRON STAKE</li> <li>EIP EXISTING IRON PIPE</li> <li>EM ELECTRIC METER</li> <li>EPK EXISTING PK NAIL</li> <li>ES ELECTRIC STUB</li> <li>FLA FLARED END SECTION</li> <li>⊕ FIRE HYDRANT</li> <li>⊕ FIBER OPTIC PEDESTAL</li> <li>GM GAS METER</li> <li>→ GUY</li> </ul>	<ul style="list-style-type: none"> <li>INV. INVERT</li> <li>IPS IRON PIPE SET</li> <li>IRS IRON ROD SET</li> <li>○ LIGHT POLE</li> <li>MNS MAGNETIC NAIL SET</li> <li>⊕ MANHOLE SANITARY SEWER</li> <li>⊕ MANHOLE STORM SEWER</li> <li>OHW OVERHEAD WIRES</li> <li>PKS PK NAIL SET</li> <li>PNS POINT NOT SET</li> <li>RRS RAIL ROAD SPIKE</li> <li>⊕ TELEPHONE PEDESTAL</li> <li>⊕ TRANSFORMER</li> <li>⊕ CABLE TV PEDESTAL</li> <li>⊕ UTILITY POLE</li> <li>⊕ WATER METER</li> <li>⊕ WATER VALVE</li> <li>⊕ YARD INLET</li> <li>( ) FIELD MEASUREMENT</li> </ul>
---	--

**REFERENCES:**

B.M. 2022, PG. 182-184



SCALE: 1" = 50'

**NOTES**

1. THIS SURVEY SUBJECT TO ANY FACTS THAT MAY BE DISCLOSED BY A FULL AND ACCURATE TITLE SEARCH.
2. THIS MAP MAY NOT BE A CERTIFIED SURVEY AND HAS NOT BEEN REVIEWED BY A LOCAL GOVERNMENT AGENCY FOR COMPLIANCE WITH ANY APPLICABLE LAND DEVELOPMENT REGULATIONS AND HAS NOT BEEN REVIEWED FOR COMPLIANCE WITH RECORDING REQUIREMENTS FOR PLATS.

**SETBACK INFO**

FRONT:	35'
REAR:	25'
SIDES:	10'
CORNER SIDE:	20'
AGGREGATE SIDE:	20'

WAKE COUNTY, NORTH CAROLINA

I CERTIFY THAT THIS MAP WAS DRAWN UNDER MY SUPERVISION FROM AN ACTUAL SURVEY MADE UNDER MY SUPERVISION; THAT THE SURVEY IS MADE WHOLLY UPON THE LOCAL GOVERNMENT RECORDS EXCEPT THERE WERE NO ENROLLING RECORDS OR RECORDS AS SHOWN, AND THAT THE SURVEY IS BASED ON EXISTING PARCEL OR PARCELS OF LAND.

**SEAL**  
 L-2813  
 CHARLES R. PIRATZKY  
 SURVEYOR  
 DATE: 9-2022

DATE: SEPT. 6, 2022  
 Q:\FieldLoc\DUNCUN CREEK1-2FND 9-6-22.txt

**RWK, PA**  
 engineering ~ surveying  
 Corporate License: C-1771  
 101 W. Main St., Suite 202  
 Garner, NC 27529  
 Phone (919) 779-4854  
 Fax (919) 779-4056