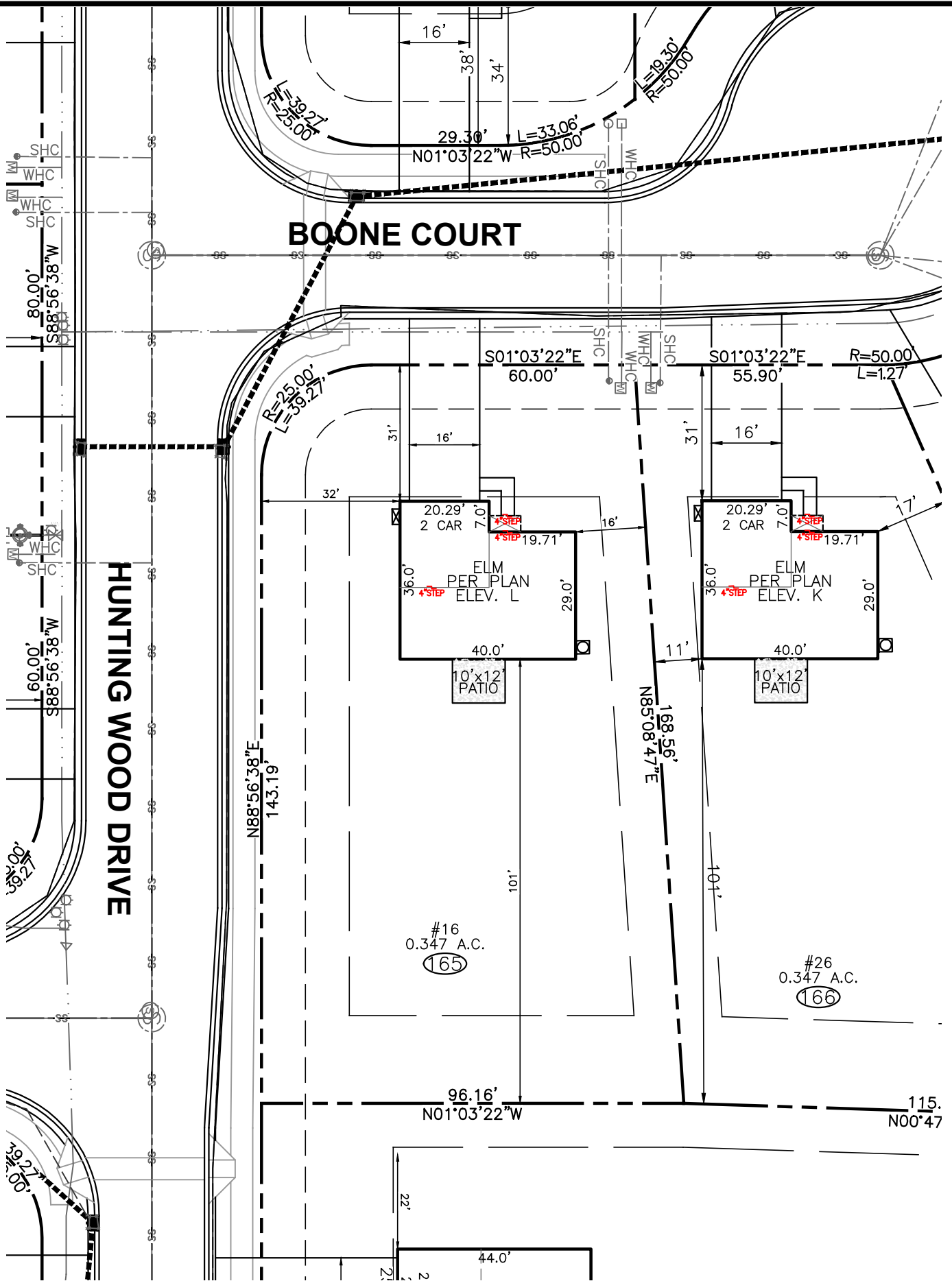


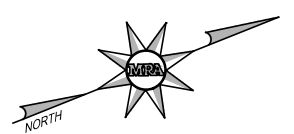
# BOONE COURT

# HUNTING WOOD DRIVE



### LEGEND

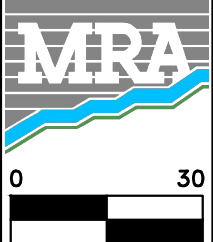
- ELEC. METER
- A/C UNIT



BUILDING SETBACK CHART	
FRONT	30' MIN.
SIDE	10' MIN. (20' CORNER)
REAR	20' MIN.
IMPERVIOUS	1,986 (13%)

RYAN HOMES—RLH AREA CALCULATIONS	
DRIVEWAY	664 SF
LEADWALK	41 SF
PUBLIC WALK	983 SF
SOD	14,225 SF
WHC	42 LF
SHC	41 LF
PATIO	120 SF
HSE FACING	N. WEST

**BUILDER**  
 RYAN HOMES  
 5734 TRINITY ROAD, SUITE 200  
 RALEIGH, NC 27607  
 PHONE: 919-233-0793



**MORRIS & RITCHIE ASSOCIATES OF NC, PC**  
 ENGINEERS, ARCHITECTS, PLANNERS, SURVEYORS AND LANDSCAPE ARCHITECTS  
 5605 CHAPEL HILL ROAD, SUITE 112  
 RALEIGH, NC 27607 PHONE:  
 984-200-2103  
 FIRM LICENSES C-4182 & G-492  
 www.mragta.com

SITE PLAN  
 FOR  
**QUAIL GLEN**  
 PHASE 6  
**LOT 165 #16 BOONE COURT**  
 BLACK RIVER TOWNSHIP  
 HARNETT COUNTY NORTH CAROLINA

SCALE: 1"=30'      DATE: JUNE 17, 2022      DRAWN BY: JOE C.      DESIGN BY: JOE C.      REVIEW BY: DARYN A.      JOB NO.: 20314