

IMPERVIOUS SURFACE AREA	
DESCRIPTION	AREA
HOUSE w/ PORCH	2,813 S.F.
HVAC	9 S.F.
DRIVEWAY & WALKS	920 S.F.
TOTAL (PROPOSED)=	3,742 S.F.
*TOTAL (ALLOWED)=	3,850 S.F.

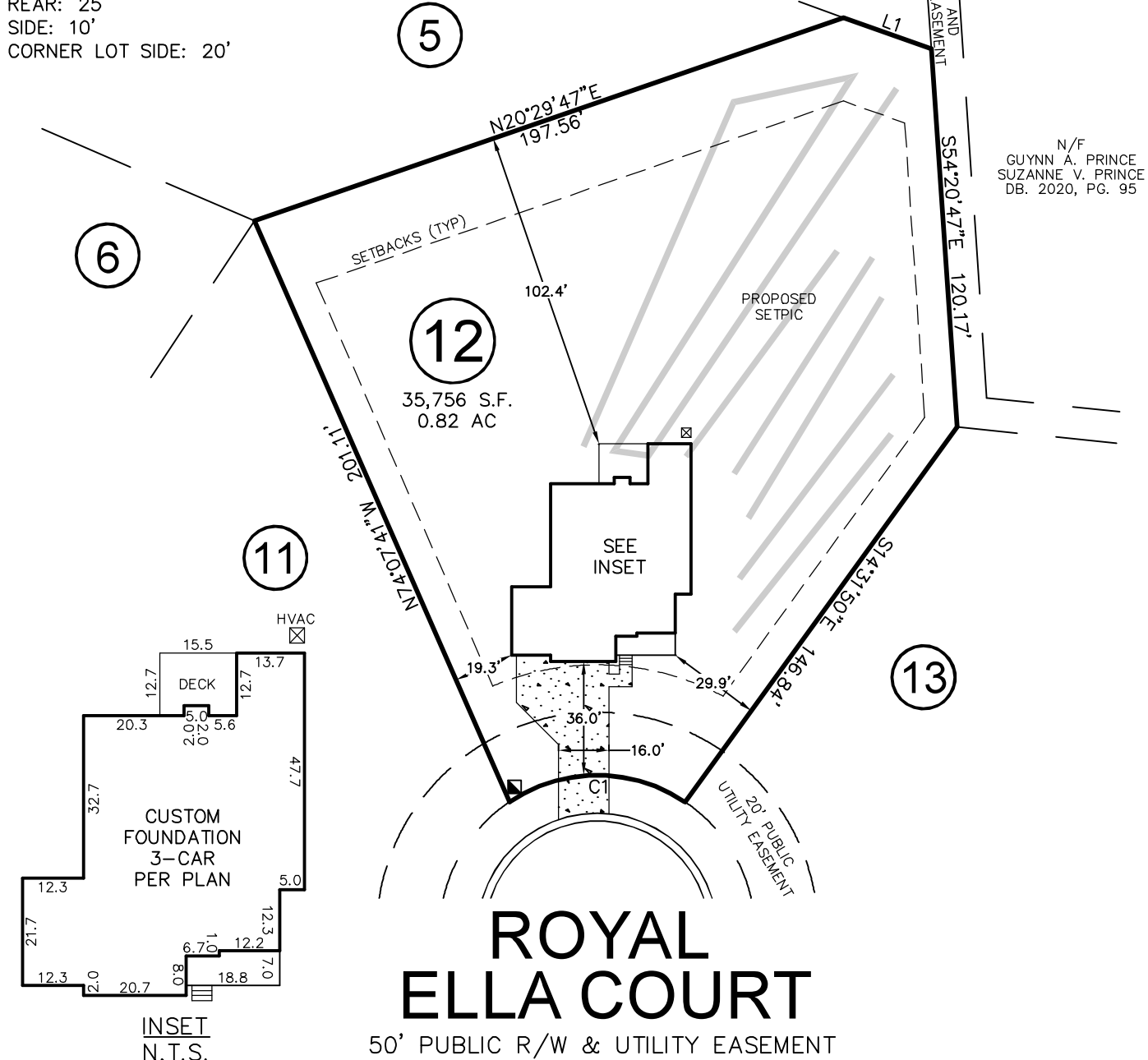
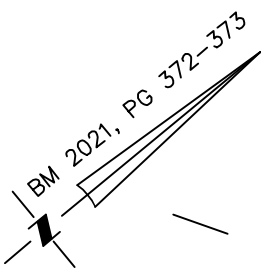
*PB 2021, PG 373



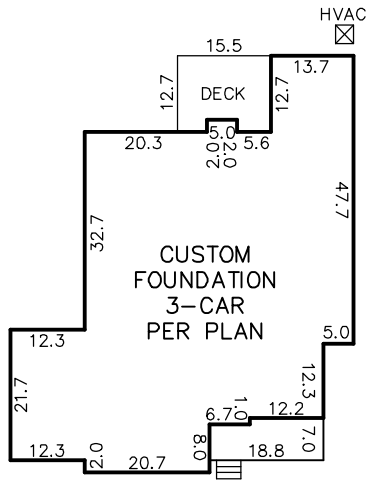
VICINITY MAP
Not To Scale

SETBACKS: (PB 2021, PG 372)

FRONT: 35' FROM R/W
REAR: 25'
SIDE: 10'
CORNER LOT SIDE: 20'



N/F
GUINN A. PRINCE
SUZANNE V. PRINCE
DB. 2020, PG. 95

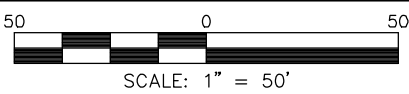


LINE	BEARING	DISTANCE		
L1	N59°06'30"E	29.44'		
CURVE	RADIUS	ARC LENGTH	CH LENGTH	CH BEARING
C1	50.00'	59.13'	55.74'	S39°32'40"W

THIS DRAWING DOES NOT REFLECT AS-BUILT INFORMATION

PRELIMINARY PLAT
NOT FOR RECORDATION, CONVEYANCES, OR SALES.

THIS PROPERTY MAY BE SUBJECT TO ANY AND ALL APPLICABLE DEED RESTRICTIONS, EASEMENTS, RIGHT-OF-WAY, UTILITIES AND RESTRICTIVE COVENANTS WHICH MAY BE OF RECORD OR IMPLIED



HOUSE LOCATION PLOT PLAN

FOR
#82 ROYAL ELLA COURT
LOT 12, PRINCE PLACE, PHASE 1
Hectors Creek Township, Harnett County, North Carolina

RESIDENTIAL LAND SERVICES, PLLC.

1917 Evans Road
Cary, North Carolina 27513
Phone (919) 378-9316
Firm License # P-0873

PROPERTY OF: TRIPLE A HOMES
PLAT BOOK 2021 PAGE 372-373 DEED REFERENCE _____

DRAWN BY: JSH DATE: JUNE 9, 2022