

Engineering
Tech
 ASSOCIATES, P.A.
 STRUCTURAL ENGINEERS
 License No. C-3870
 318 W Millbrook Rd. Unit 201
 Raleigh, North Carolina 27609
 Phone (919) 844-1661

TRIPLE V HOMES	
SCOPE	RAFTER SPICING
LOC	12 PRINCE PLACE
REV #	REF PROJ #
DATE	

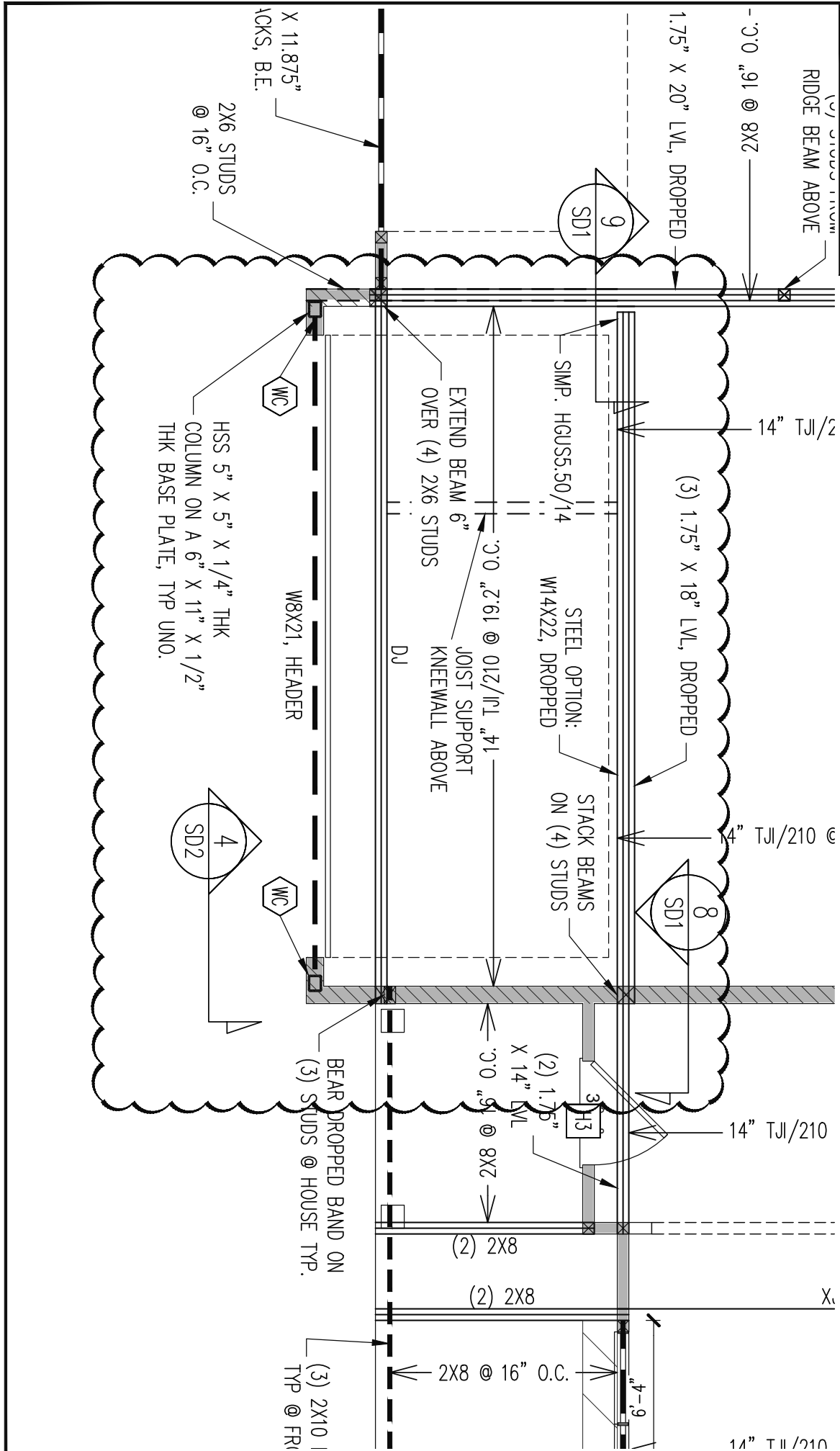
ENG: RJS/CR
 DATE: 12/1/2022

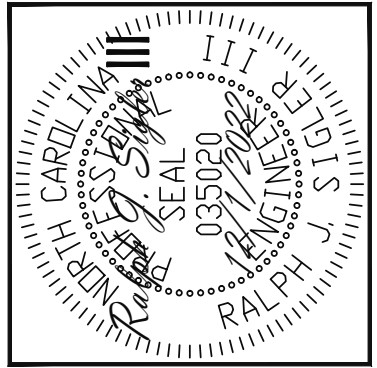
PARENT
 22-28-019

PROJECT NO.
 22-76-244

SHEET NO.
 SL1

1 of 5





Engineering
Tech
 ASSOCIATES, P.A.
 STRUCTURAL ENGINEERS
 License No. C-3870
 318 W Millbrook Rd. Unit 201
 Raleigh, North Carolina 27609
 Phone (919) 844-1661

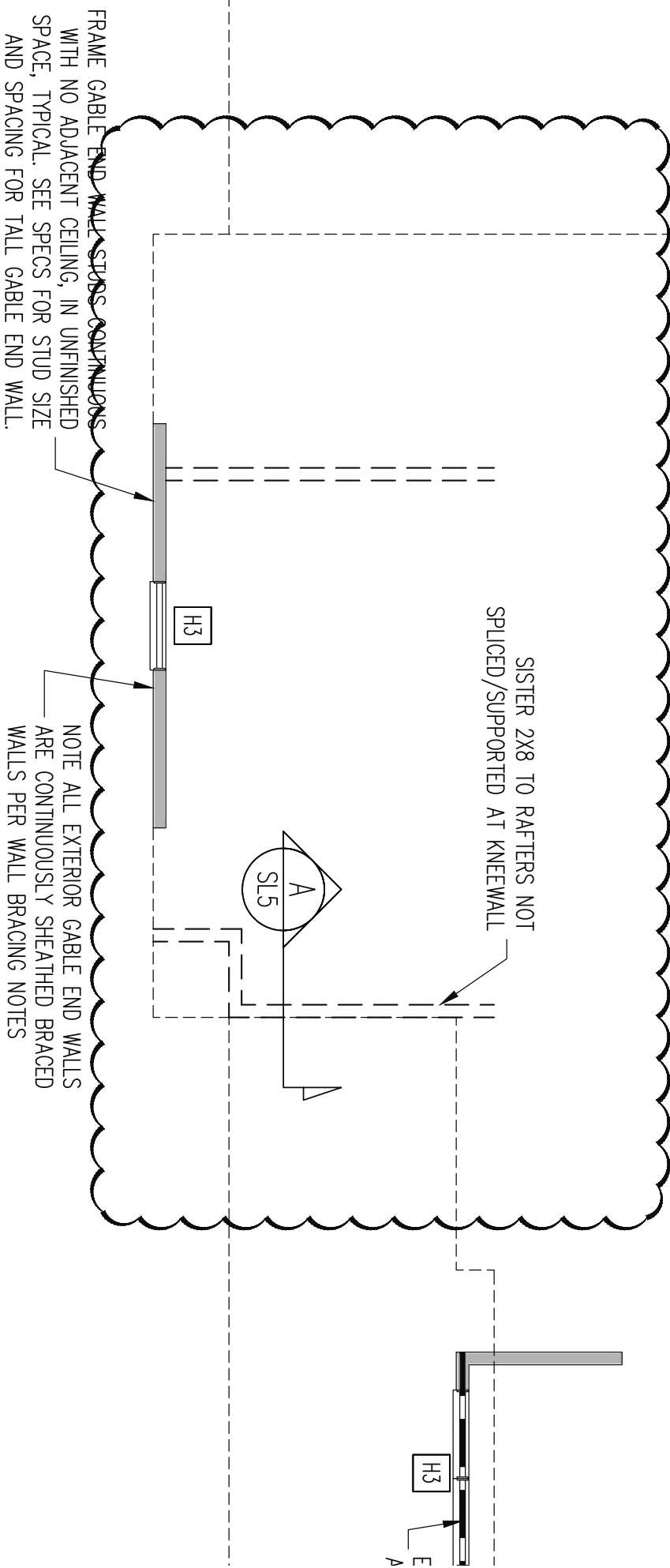
TRIPLE A HOMES	
SCOPE	RAFTER SPICING
LOC	12 PRINCE PLACE
REV #	REF PROJ #
DATE	

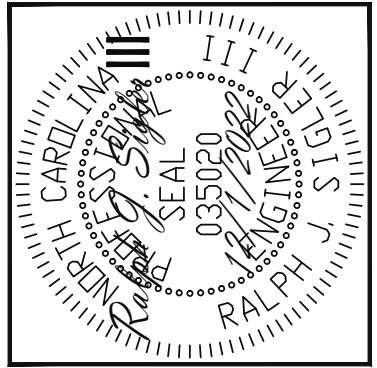
ENG: RJS/CR
 DATE: 12/1/2022

PARENT
 22-28-019

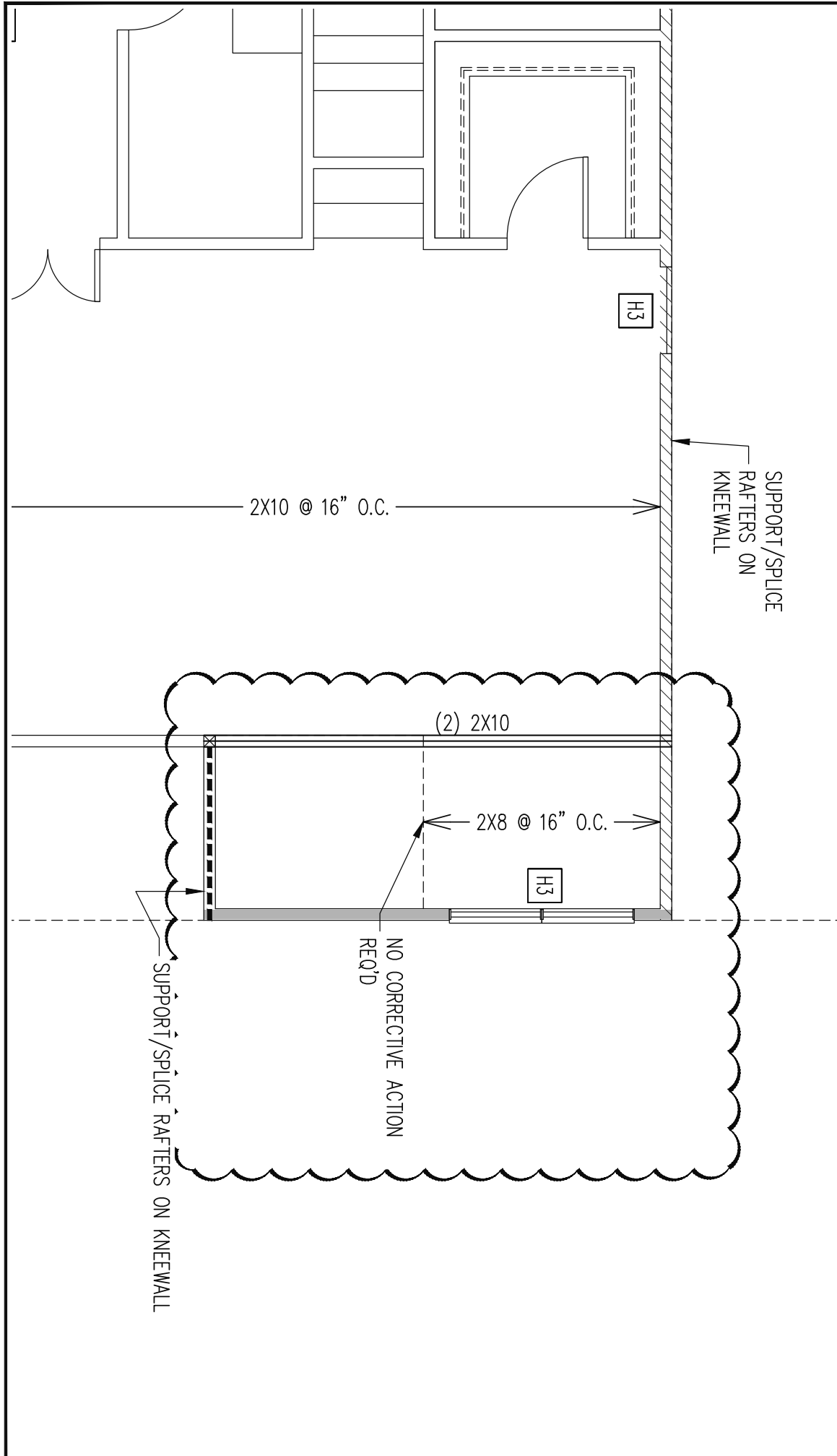
PROJECT NO.
 22-76-244

SHEET NO.
 SL2
 2 of 5





Engineering
Lech
 ASSOCIATES, P.A.
 STRUCTURAL ENGINEERS
 License No. C-3870
 318 W Millbrook Rd. Unit 201
 Raleigh, North Carolina 27609
 Phone (919) 844-1661



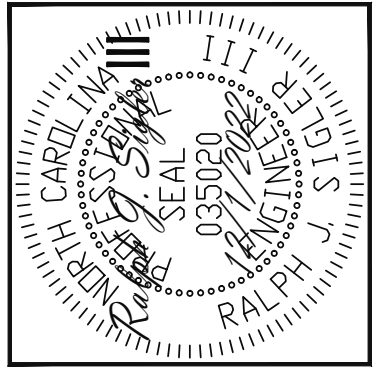
TRIPLE A HOMES		REV #	REF PROJ #	DATE
SCOPE	RAFTER SPICING			
LOC	12 PRINCE PLACE			

ENG: RJS/CR
 DATE: 12/1/2022

PARENT
 22-28-019

PROJECT NO.
 22-76-244

SHEET NO.
 SL3



Engineering Lech
 ASSOCIATES, P.A.
 STRUCTURAL ENGINEERS
 License No. C-3870
 318 W Millbrook Rd. Unit 201
 Raleigh, North Carolina 27609
 Phone (919) 844-1661

TRIPLE A HOMES	
SCOPE	RAFTER SPICING
LOC	12 PRINCE PLACE
REV #	REF PROJ #
DATE	

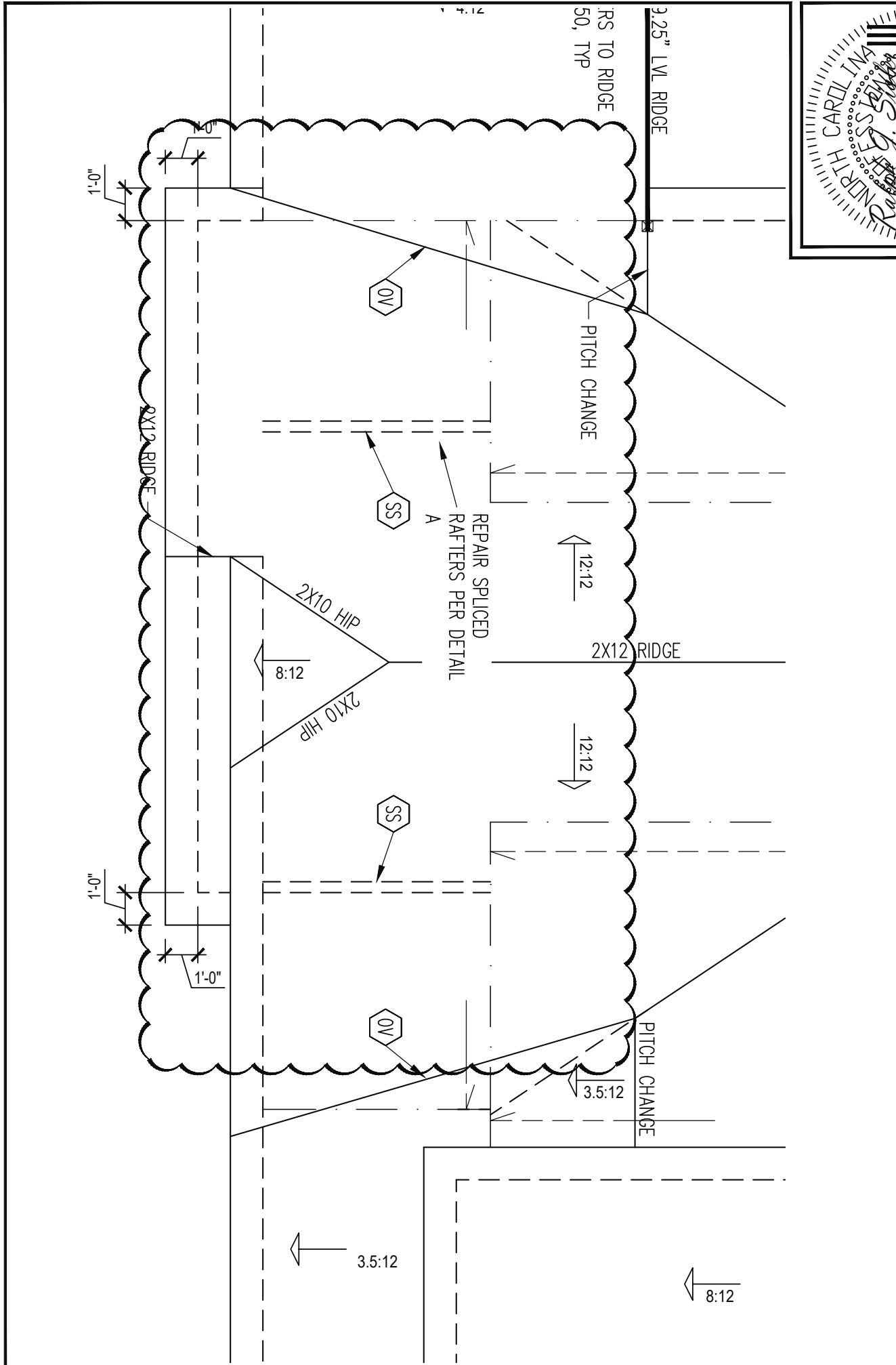
ENG: RJS/CR
 DATE: 12/1/2022

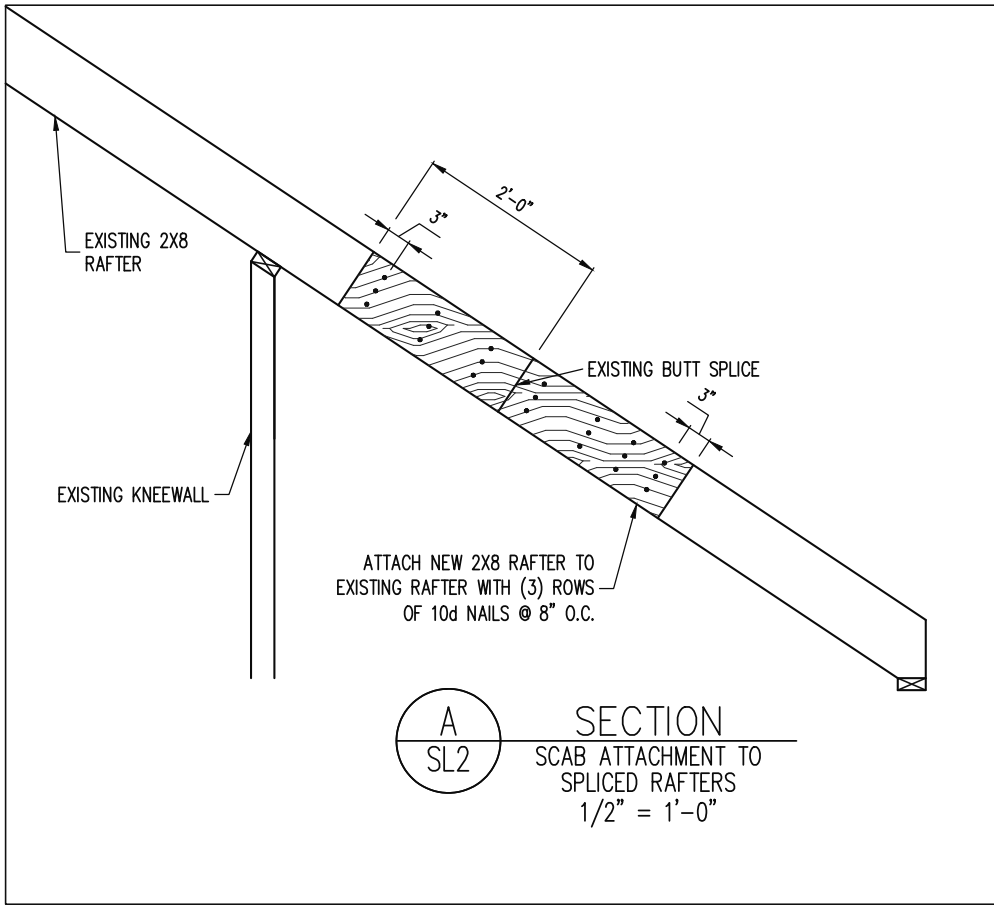
PARENT
 22-28-019

PROJECT NO.
 22-76-244

SHEET NO.
 SL4

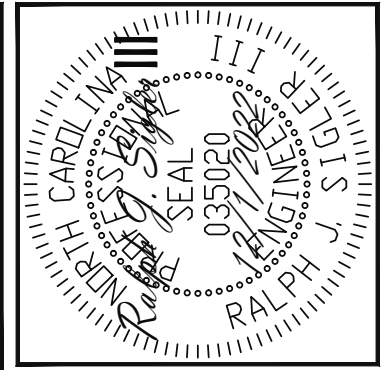
4 of 5





A
SL2

SECTION
SCAB ATTACHMENT TO
SPLICED RAFTERS
1/2" = 1'-0"



Engineering
Lech
ASSOCIATES, P.A.

STRUCTURAL ENGINEERS
License No. C-3870
318 W Millbrook Rd. Unit 201
Raleigh, North Carolina 27609
Phone (919) 844-1661

TRIPLE A HOMES		REV #	REF PROJ #	DATE
SCOPE	RAFTER SPICING			
LOC	12 PRINCE PLACE			

ENG: RJS/CR
DATE: 12/1/2022

PARENT
22-28-019

PROJECT NO.
22-76-244

SHEET NO.
S5
5 of 5