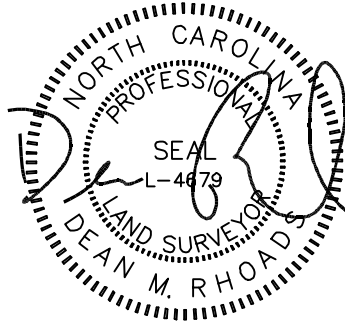
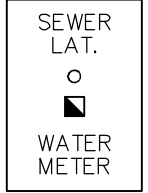
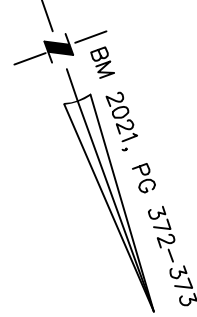


VICINITY MAP
Not To Scale



IMPERVIOUS SURFACE AREA	
DESCRIPTION	AREA
HOUSE w/ PORCH	2,797 S.F.
SC PORCH/HVAC.	206 S.F.
DRIVEWAY & WALKS	1,016 S.F.
TOTAL (PROPOSED)=	4,019 S.F.
*TOTAL (ALLOWED)=	4,020 S.F.

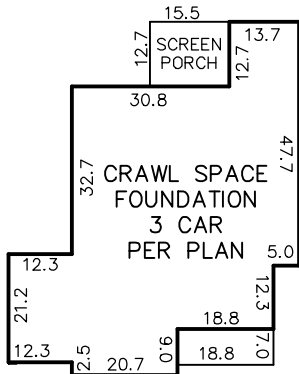
*PENDING PLAT



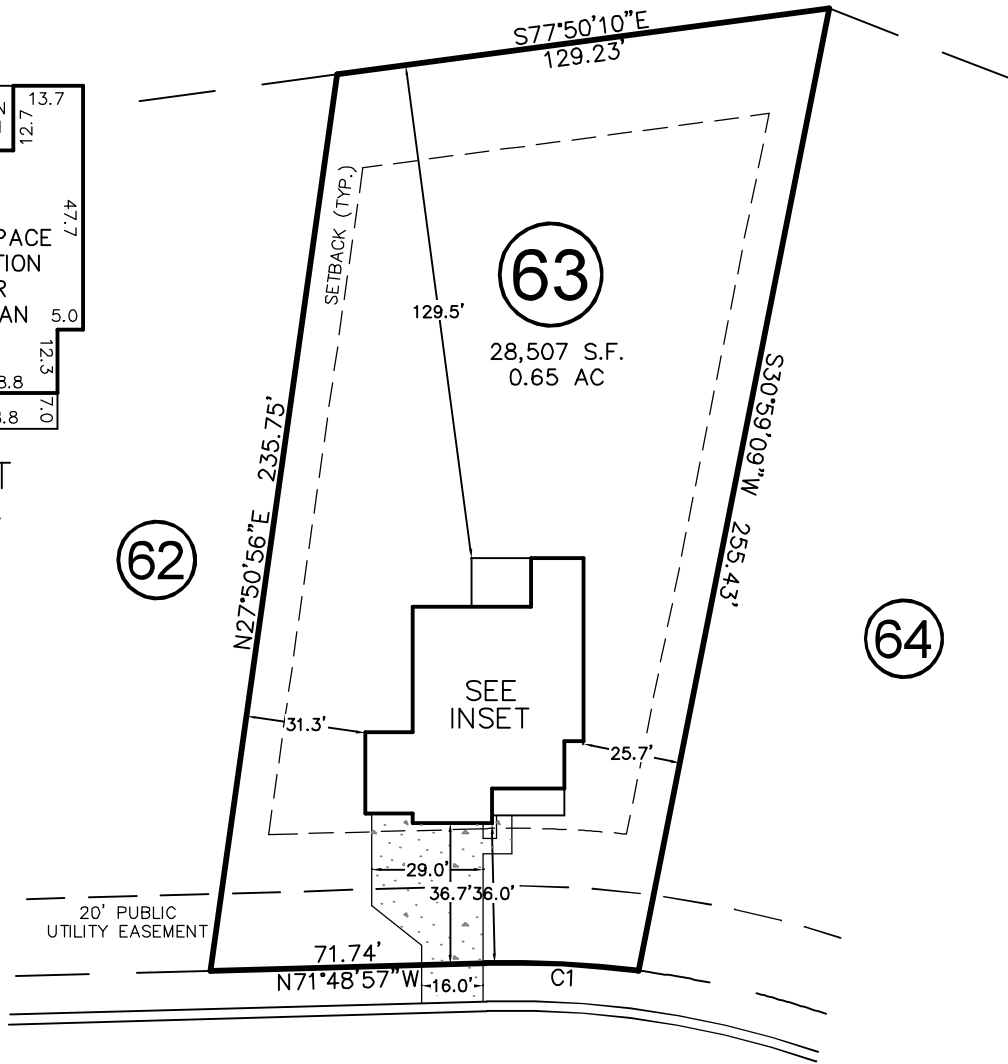
SETBACKS: (PB 2021 PG 372)

FRONT: 35' FROM R/W
REAR: 25'
SIDE: 10'
CORNER LOT SIDE: 20'

OPEN SPACE



INSET
N.T.S.



PRINCE PLACE DRIVE

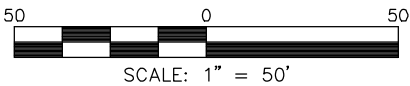
50' PUBLIC R/W & UTILITY EASEMENT

CURVE	RADIUS	ARC LENGTH	CH LENGTH	CH BEARING
C1	255.00'	39.92'	39.88'	S67°19'28"E

THIS PROPERTY MAY BE SUBJECT TO ANY AND ALL APPLICABLE DEED RESTRICTIONS, EASEMENTS, RIGHT-OF-WAY, UTILITIES AND RESTRICTIVE COVENANTS WHICH MAY BE OF RECORD OR IMPLIED

THIS DRAWING DOES NOT REFLECT AS-BUILT INFORMATION

PRELIMINARY PLAT
NOT FOR RECORDATION, CONVEYANCES, OR SALES.



RESIDENTIAL LAND SERVICES, PLLC.

1917 Evans Road
Cary, North Carolina 27513
Phone (919) 378-9316
Firm License # P-0873

HOUSE LOCATION PLOT PLAN

FOR
PRINCE PLACE DRIVE
LOT 63, PRINCE PLACE, PHASE 1

Hectors Creek Township, Harnett County, North Carolina

PROPERTY OF: TRIPLE A HOMES, INC

PLAT BOOK 2021 PAGE 372-373 DEED REFERENCE

DRAWN BY: JLA

DATE: MAY 12, 2022