

CURVE TABLE				
CURVE	LENGTH	RADIUS	BEARING	CHORD
C1 (REC)	100.00'	255.00'	N33°59'59"W	99.36'

LEGEND			
△	DENOTES CONTROL CORNER		
□	CONCRETE MONUMENT		
○	DENOTES BREAK IN LINE		
EIP	EXISTING IRON PIPE		
EIR	EXISTING IRON REBAR		
SIR	SET IRON REBAR		
EMN	EXISTING MAG NAIL		
SMN	SET MAG NAIL		
AG	ABOVE GROUND	REC	RECORDED
BG	BELOW GROUND	MEAS	MEASURED
NOTE 1/2" IRON REBAR SET FLUSH W/ THE GROUND AT ALL PROPERTY CORNERS			

DAVIS CHAPEL  
A.M.E. ZION CHURCH  
PIN# 0565-82-0067.000  
D.B. 3172, PG. 842  
P.B. 2012, PG. 511

VICINITY MAP  
(NO SCALE)

16  
ABJ INVESTMENTS LLC  
PIN# 0565-72-8261.000  
P.B. 2022, PG. 222  
D.B. 3551, PG. 111

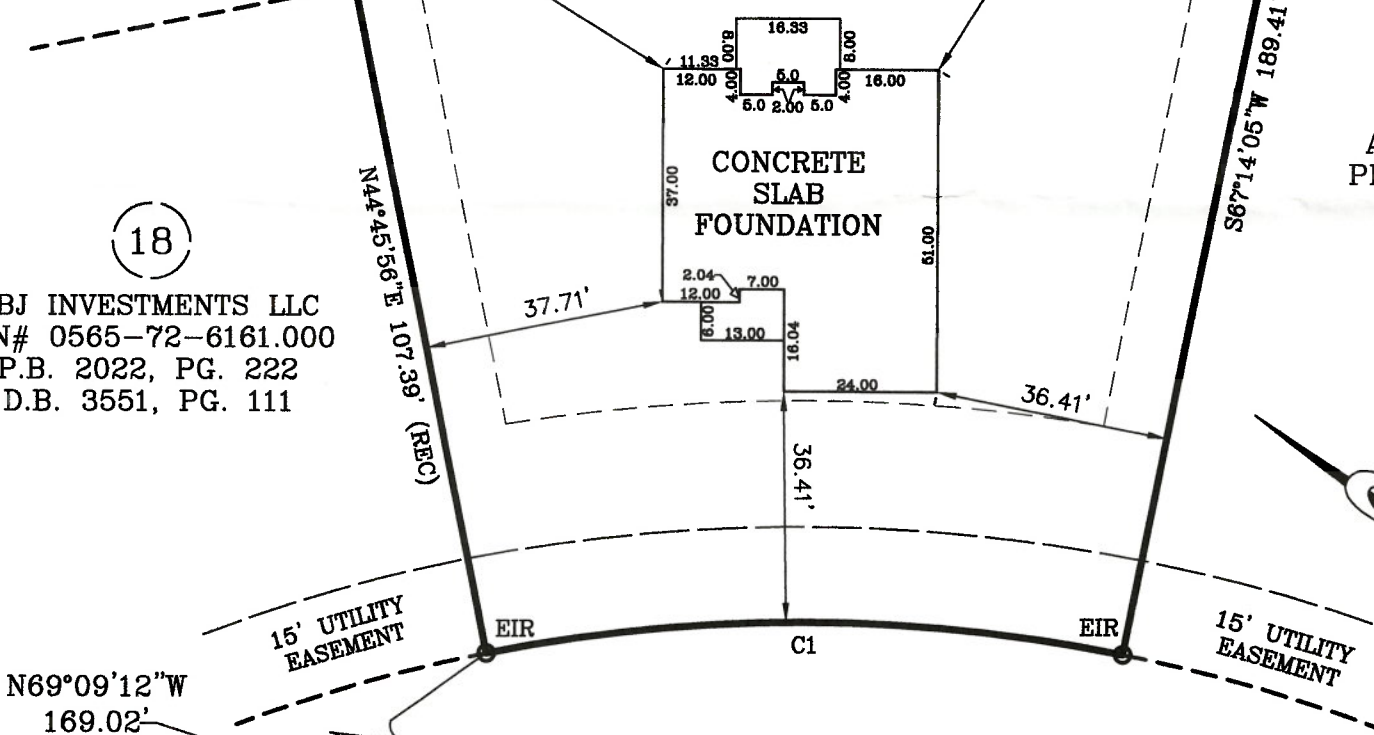
DAVIS CHAPEL  
A.M.E. ZION CHURCH  
PIN# 0565-82-0067.000  
D.B. 3172, PG. 842  
P.B. 2012, PG. 511

17  
ABJ INVESTMENTS LLC  
PIN# 0565-72-7158.000  
P.B. 2022, PG. 222  
D.B. 3551, PG. 111

19  
0.57 ACRES  
24,910 SQ. FT.

20  
ABJ INVESTMENTS LLC  
PIN# 0565-71-8941.000  
P.B. 2022, PG. 222  
D.B. 4160, PG. 2281

18  
ABJ INVESTMENTS LLC  
PIN# 0565-72-6161.000  
P.B. 2022, PG. 222  
D.B. 3551, PG. 111

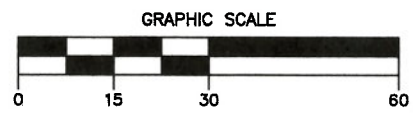


RAINY BECK WAY  
50 FT. PUBLIC R/W

FOUNDATION SURVEY

SURVEY FOR: JSJ BUILDERS  
ADDRESS: RAINY BECK WAY  
CITY OF: ERWIN, NC  
COUNTY OF: HARNETT

TOWNSHIP OF: STEWARTS CREEK  
DATE: SEPT 16TH, 2022  
SCALE: 1" = 30'  
REFERENCE: LOT 19  
WILLIAMS FARM  
PHASE TWO  
P.B. 2022, PG. 222



Larry King & Associates, R.L.S., P.A.  
P.O. Box 53787  
1333 Morganton Road, Suite 201  
Fayetteville, NC 28305  
Phone: (910)483-4300  
Fax: (910)483-4052  
[www.LKandA.com](http://www.LKandA.com)  
NC Firm License C-0887

"I certify that this map was drawn under my supervision from an actual survey made under my supervision (deed description recorded in P.B. 14, PG. 25 or other reference source as shown); that the boundaries not surveyed are indicated as drawn from information in Book and page as referenced above that the ratio of precision or positional accuracy is > 1:10,000; and that this map meets the requirements of The Standards of Practice for Land Surveying in North Carolina (21 NCAC 56. 1600)."

9.17.22  
W. Larry King PLS 1339  
W. Larry King, Professional Land Surveyor L-1339

K:\sds\proj\JSJ BUILDERS\WILLIAMS FARM\LOT 19 - FOUNDATION.dwg, 9/16/2022 6:47:43 PM, lka\_user\_10, 1:30