

THIS LAYOUT IS TO BE USED AS A TRUSS PLACEMENT GUIDE ONLY.  
PLEASE REFER TO BUILDING PLANS FOR BUILDING CONSTRUCTION AND DETAILS,  
SUCH AS PLUMBING OR DUCT DROPS.

PROPOSED DESIGN-  
NOT FOR  
CONSTRUCTION

Job #  
Q-2101675

Ellington Crawl V5  
Raleigh NC

- Notes:
- Exterior dimensions shown are assumed to be:
    - ☐ Out-to-out of stud
    - ☒ Out-to-out of sheathing
  - Adjust truss locations as needed for plumbing and mechanical clearance. Unless otherwise noted, trusses may be shifted as long as O.C. spacing shown is not exceeded.
  - Do not cut, drill, or otherwise damage any part of any truss without prior approval from Peak Truss.
  - Do not approve drawings if any information herein is unclear. Once ordered trusses will be fabricated as approved.
  - Please contact Peak Truss Builders with any questions. We are available to help any way we can. We can be reached at 919-545-5555 or sales@peaktruss.com

Roof Truss Loading per 2018 NC Residential Code

Top Chord Live Load 20# PSF  
Top Chord Dead Load 10# PSF  
Bottom Chord Live Load 0# PSF  
Bottom Chord Dead Load 10# PSF

Trusses are designed for additional storage load wherever a 42"x24" box will fit between the webs.

- △ - This symbol denotes left end of truss as shown on truss drawings
- - Approximate location of toilet drop. Builder please confirm.

Truss connections by others:

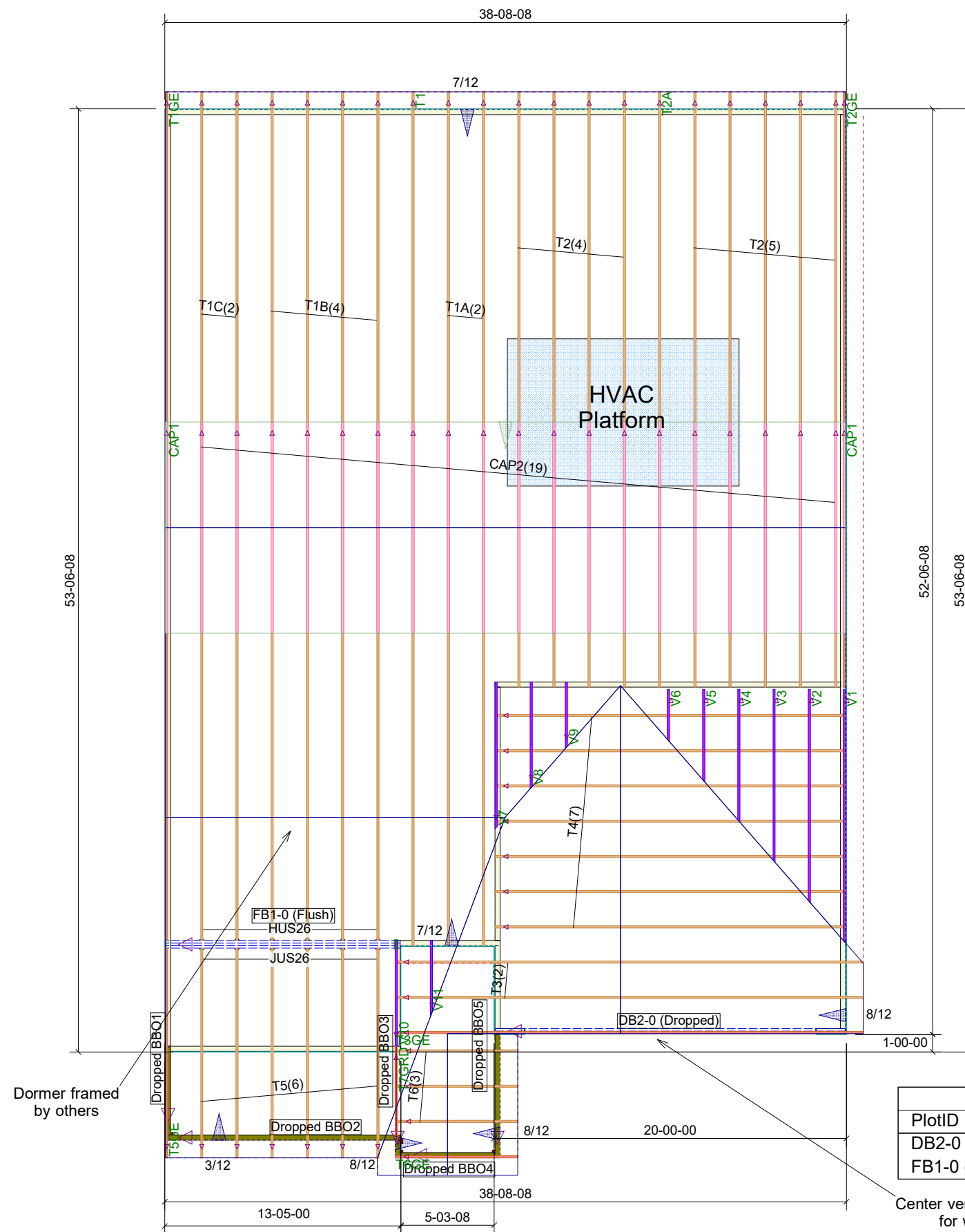
- N - Nailed
- L - Ledger

Date Quoted:

Designer:  
Aron Meeks

Lamco Custom Builders LLC

Peak Truss  
Builders, LLC  
PO Box 340, New Hill, NC 27562

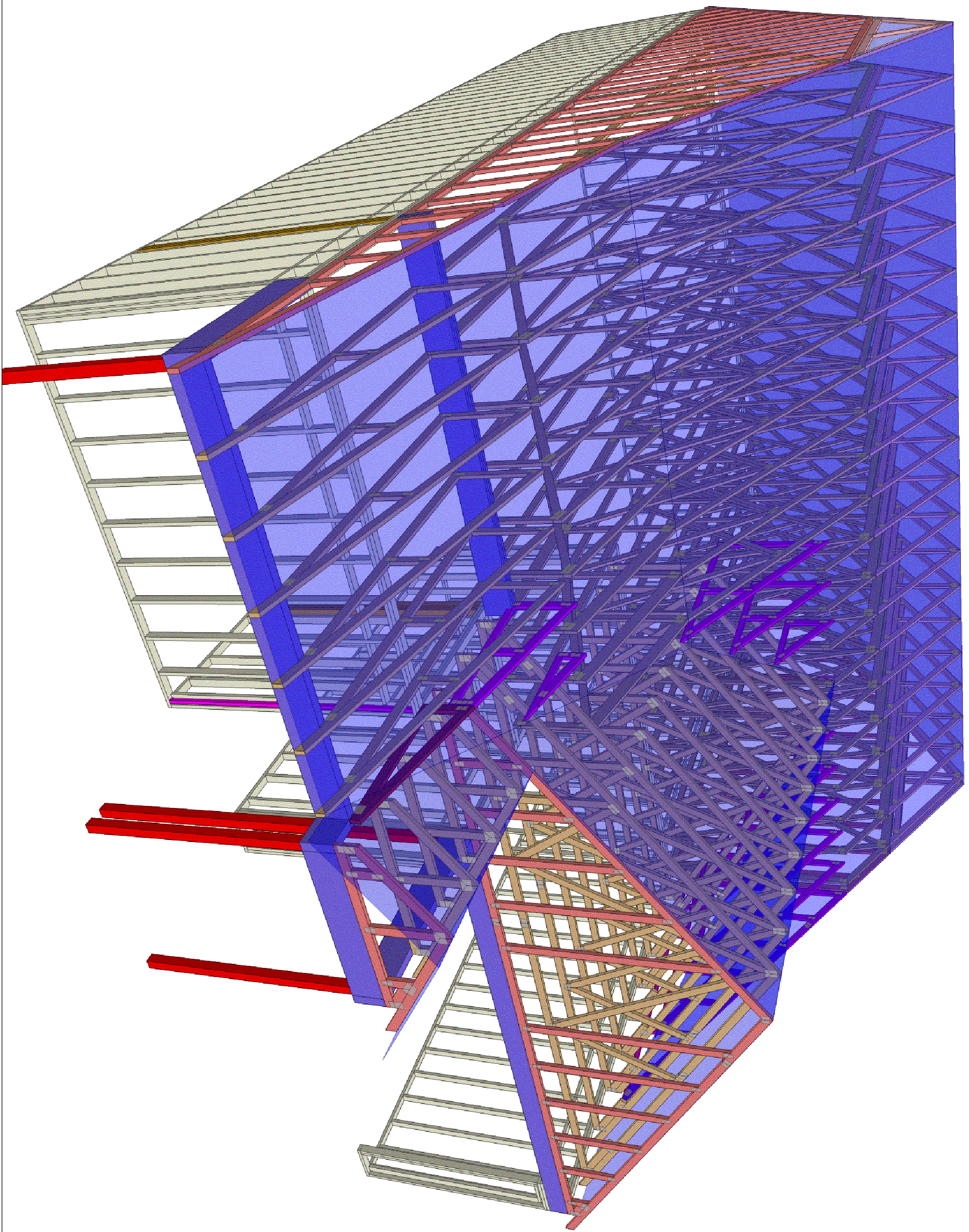


The Ellington V5  
1' OH, 2' OC

Truss Connector Total List		
Manuf	Product	Qty
USP	HUS26	6
USP	JUS26	6

Products					
PlotID	Length	Product	Plies	Net Qty	Fab Type
DB2-0 (Dropped)	20-00-00	1-3/4X9-1/4 LP-LVL 2900Fb-2.0E	2	2	MFD
FB1-0 (Flush)	14-00-00	1-3/4X11-7/8 LP-LVL 2900Fb-2.0E	3	3	MFD

Center vertical removed for window.



**Peak Truss  
Builders, LLC**

PO Box 340, New Hill, NC 27562

Lamco Custom Builders LLC

Date Quoted:

Designer:  
**Aron Meeks**

Ellington Crawl V5

Raleigh NC

Job #

**Q-2101675**