

THIS LAYOUT IS TO BE USED AS A TRUSS PLACEMENT GUIDE ONLY.  
PLEASE REFER TO BUILDING PLANS FOR BUILDING CONSTRUCTION AND DETAILS,  
SUCH AS PLUMBING OR DUCT DROPS.

CONSTRUCTION COPY-  
FOR FIELD USE

Job #  
P-7882

Yarbrough Front Load Crawl V4  
416 Kotata Ave  
Bunnlevel NC

Date Quoted:  
7/9/2021

Designer:  
Nate Donaldson

Lamco Custom Builders LLC

Peak Truss  
Builders, LLC  
PO Box 340, New Hill, NC 27562

Yarbrough Crawl V4  
Front Load  
1' OH, 2' OC

Truss Connector Total List		
Manuf	Product	Qty
USP	HUS26	6

Products					
PlotID	Length	Product	Plies	Net Qty	Fab Type
DB1-0 (Dropped)	22-00-00	1-3/4X14 LP-LVL 2900Fb-2.0E	2	2	MFD

- Notes:
- Exterior dimensions shown are assumed to be:
    - Out-to-out of stud
    - Out-to-out of sheathing
  - Adjust truss locations as needed for plumbing and mechanical clearance. Unless otherwise noted, trusses may be shifted as long as O.C. spacing shown is not exceeded.
  - Do not cut, drill, or otherwise damage any part of any truss without prior approval from Peak Truss. Do not install trusses that are damaged, are not properly fabricated, or do not have adequate bearing.
  - Do not approve drawings if any information herein is unclear. Once ordered trusses will be fabricated as approved.
  - Please contact Peak Truss Builders with any questions. We are available to help any way we can. We can be reached at 919-545-5555 or sales@peaktruss.com

Roof Truss Loading per 2018 NC Residential Code

Top Chord Live Load 20# PSF  
Top Chord Dead Load 10# PSF  
Bottom Chord Live Load 0# PSF  
Bottom Chord Dead Load 10# PSF

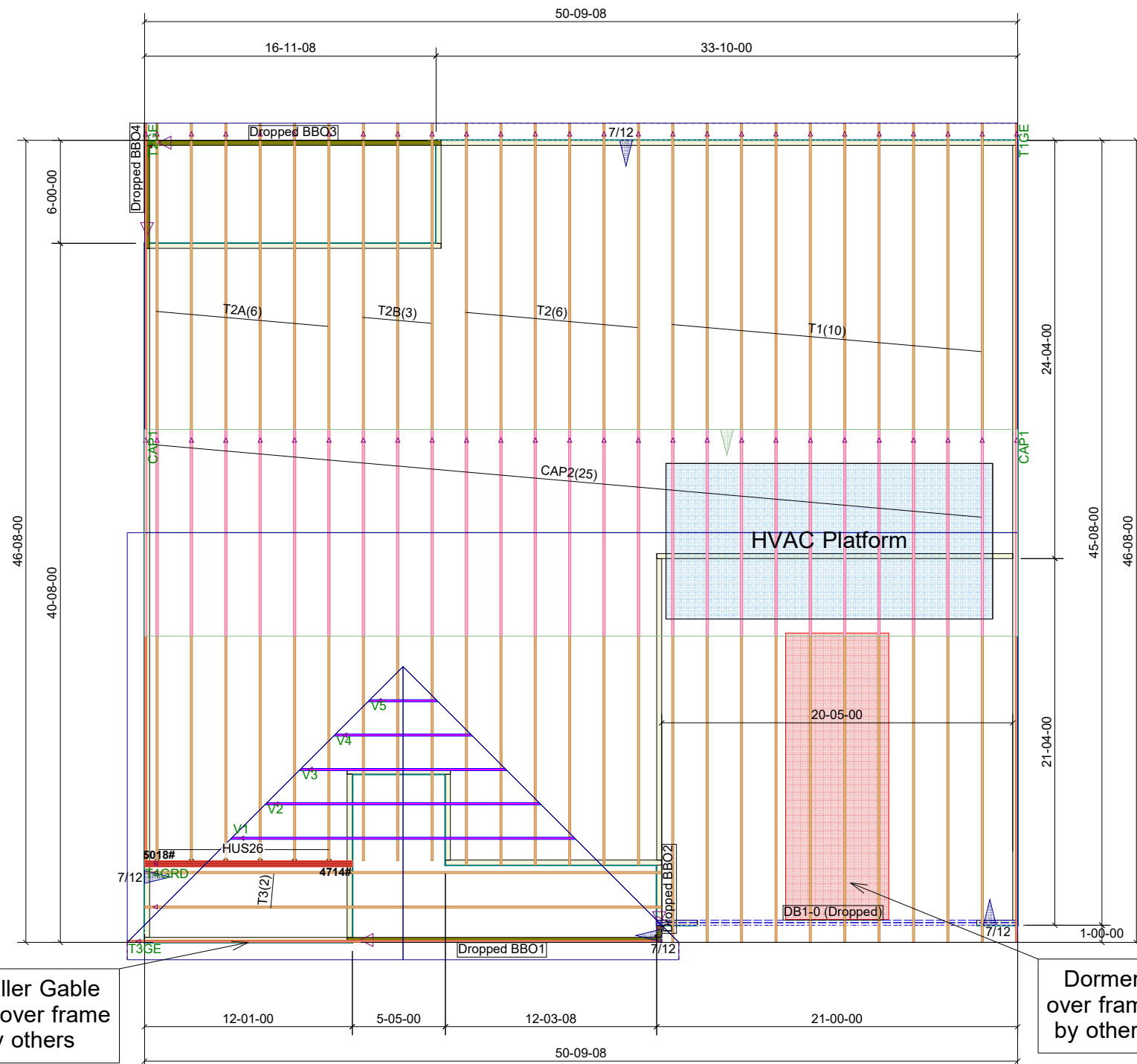
Trusses are designed for additional storage load wherever a 42"x24" box will fit between the webs.

△ - This symbol denotes left end of truss as shown on truss drawings

● - Approximate location of toilet drop. Builder please confirm.

Truss connections by others:

⊕ - Nailed  
⊞ - Ledger



Smaller Gable  
Area over frame  
by others

Dormer  
over frame  
by others