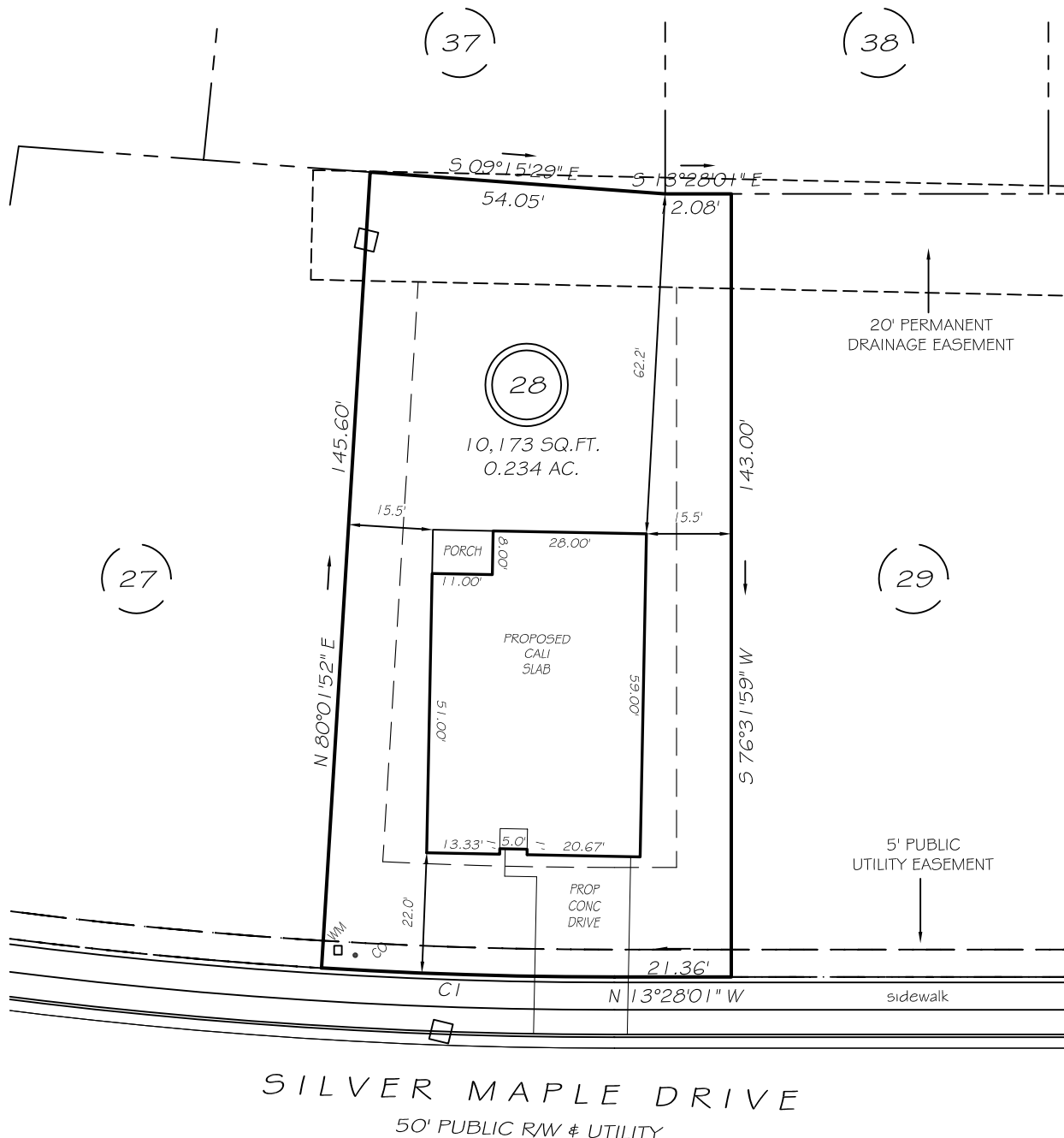


I, MICHAEL P. GRIFFIN, certify that under my direction and supervision this map was drawn from an actual field survey; that the error of closure of the survey as calculated by coordinates is 1: 10,000+; that the area shown hereon was calculated by coordinates.

Witness my hand and seal this day of MONTH 2022.

BM 2022 PGS 156-162
HARNETT CO. REGISTRY



SILVER MAPLE DRIVE
50' PUBLIC RW & UTILITY

IMPERVIOUS AREAS

HOUSE	2296 SQ. FT.
DRIVE & WALKS	404 SQ. FT.
PATIO	0 SQ. FT.
TOTAL	2700 SQ. FT.
ALLOWED	3000 SQ. FT.

SETBACKS

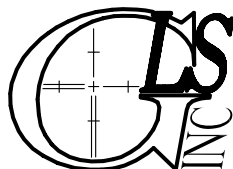
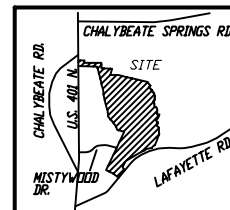
FRONT	20'
REAR	15'
SIDE	10'
CORNER SIDE	15'

CI R=877.00' L=53.54' S11°43'04"E 53.53'

LEGEND

PRELIMINARY
NOT FOR RECORDATION,
SALES OR CONVEYANCE

EIP	EXISTING IRON PIPE	FES	FLARED END SECTION
IPS	IRON PIPE SET	WM	WATER METER
RAW	RIGHT OF WAY	CO	CLEAN OUT
N/F	NOW OR FORMERLY	FH	FIRE HYDRANT
EIS	EXISTING IRON STAKE	CB	CATCH BASIN



GRIFFIN LAND SURVEYING, INC.

P. O. BOX 148
FUQUAY-VARINA, NC 27526
(919) - 567 - 1963

PLOT PLAN
FOR

D. R. HORTON

WOODGROVE
LOT 28

SILVER MAPLE DRIVE
NORTH CAROLINA

HARNETT CO. HECTOR'S CREEK TWSHP

DRAWN BY NMF

DATE 4/14/22

CHECKED BY MPG

SCALE 1" = 30'