

MICHAEL P. GRIFFIN, certify that under my direction and supervision this map was drawn from an actual field survey, that the error of closure of the survey as calculated by coordinates is 1: 10,000+; that the area shown hereon was calculated by coordinates.

Witness my hand and seal this day of MONTH 2022.



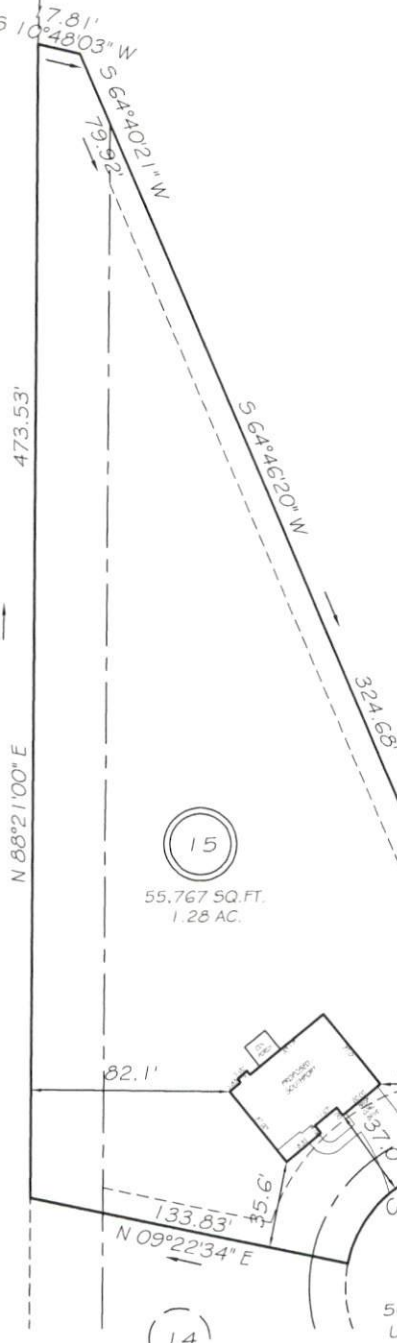
IMPERVIOUS AREAS

HOUSE	1923 SQ. FT.
DRIVE & WALKS	736 SQ. FT.
PATIO	000 SQ. FT.
TOTAL	2659 SQ. FT.
ALLOWED	5252 SQ. FT.

SETBACKS

FRONT	35'
REAR	25'
SIDE	10'
CORNER SIDE	20'

HORSESHOE BEND ROAD
60' PUBLIC R/W



N/F
DAVIS CHAPEL
A.M.E. ZION CHURCH
DB 3172 PG 842
PB 2012 PG 511



15 UTILITY EASEMENT

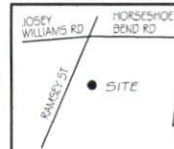


ROCKING CANAL PLACE
50' PUBLIC R/W & UTILITY ACCESS

CI R=50.00' L=68.52' N41°22'00"W 63.28'

LEGEND

EIP	EXISTING IRON PIPE	FES	FLARED END SECTION
IP5	IRON PIPE SET	WM	WATER METER
R/W	RIGHT OF WAY	CO	CLEAN OUT
N/F	NOW OR FORMERLY	FH	FIRE HYDRANT
EIS	EXISTING IRON STAKE	CB	CATCH BASIN



PRELIMINARY
NOT FOR RECORDATION,
SALES OR CONVEYANCE



GRIFFIN LAND SURVEYING, INC.

P.O. BOX 148
FUQUAY-VARINA, NC 27526
(919) - 567-1963

PLOT PLAN
FOR
H & H HOMES

WILLIAMS FARM
LOT 15

ROCKING CANAL PLACE
NORTH CAROLINA
HARNETT CO. STEWART'S CREEK TOWNSHIP

DRAWN BY NMF

DATE 5/24/22

CHECKED BY MPG

SCALE 1" = 60'