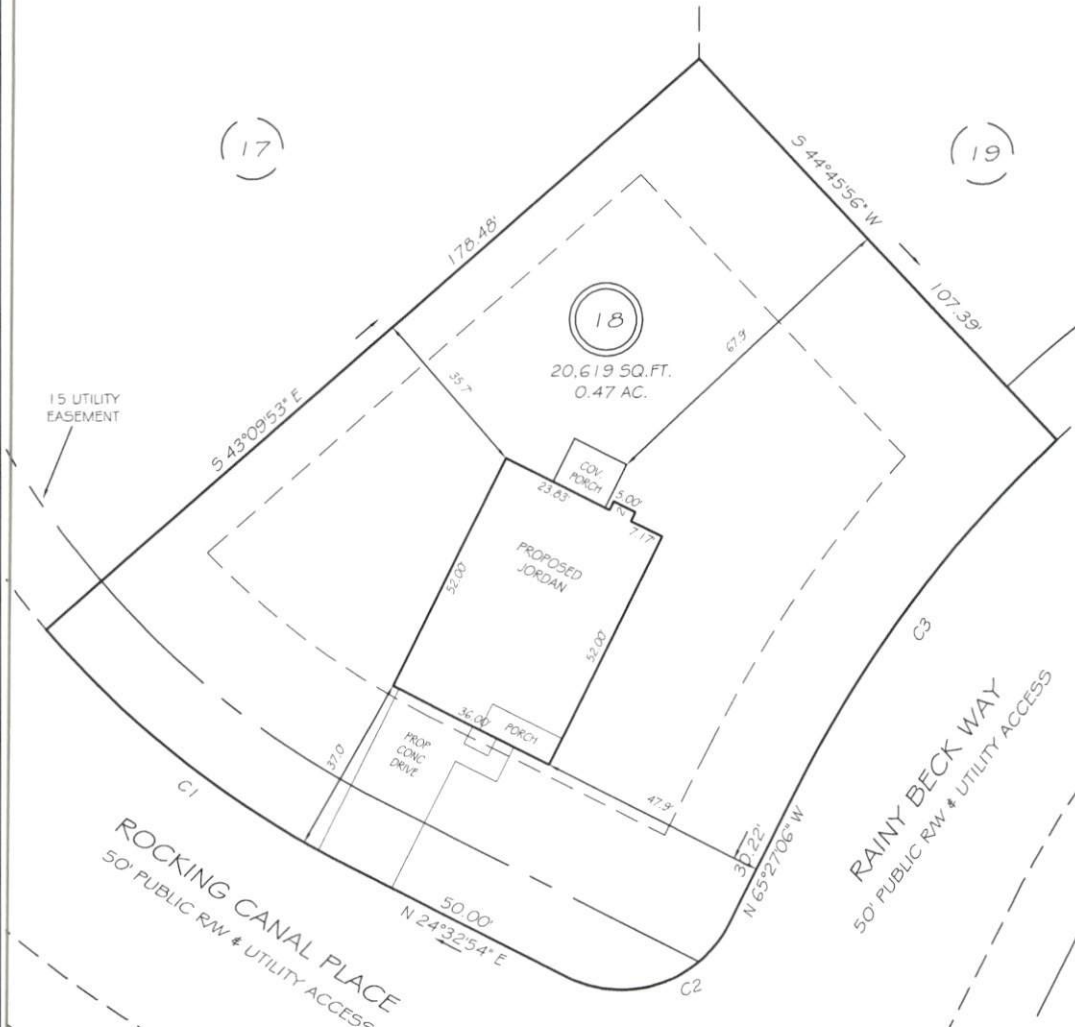


I, MICHAEL P. GRIFFIN, certify that under my direction and supervision this map was drawn from an actual field survey; that the error of closure of the survey as calculated by coordinates is 1: 10,000+; that the area shown hereon was calculated by coordinates.
 Witness my hand and seal this day of MONTH 2022.

BK 2022 PG 222-228
 HARNETT CO. REGISTRY



IMPERVIOUS AREAS

HOUSE	2002 SQ. FT.
DRIVE & WALKS	683 SQ. FT.
PATIO	000 SQ. FT.
TOTAL	2685 SQ. FT.
ALLOWED	5252 SQ. FT.

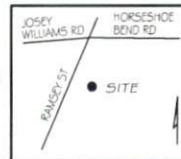
SETBACKS

FRONT	35'
REAR	25'
SIDE	10'
CORNER SIDE	20'

C1 R=205.00' L=79.74' S35°41'31"W 79.24'
 C2 R=25.00' L=39.28' S20°27'06"E 35.36'
 C3 R=255.00' L=89.98' N55°20'35"W 89.51'

LEGEND

EIP	EXISTING IRON PIPE	FES	FLARED END SECTION
IP5	IRON PIPE SET	WM	WATER METER
R/W	RIGHT OF WAY	CO	CLEAN OUT
N/F	NOW OR FORMERLY	FH	FIRE HYDRANT
EIS	EXISTING IRON STAKE	CB	CATCH BASIN



PRELIMINARY
 NOT FOR RECORDATION,
 SALES OR CONVEYANCE

GLS GRIFFIN LAND SURVEYING, INC.
 P.O. BOX 148
 FUQUAY-VARINA, NC 27526
 (919) - 567 - 1963

PLOT PLAN
 FOR
H & H HOMES
 WILLIAMS FARM
 LOT 18
 ROCKING CANAL PLACE
 NORTH CAROLINA
 HARNETT CO. STEWART'S CREEK TOWNSHIP

DRAWN BY NMF	DATE 5/18/22
CHECKED BY MPG	SCALE 1" = 30'